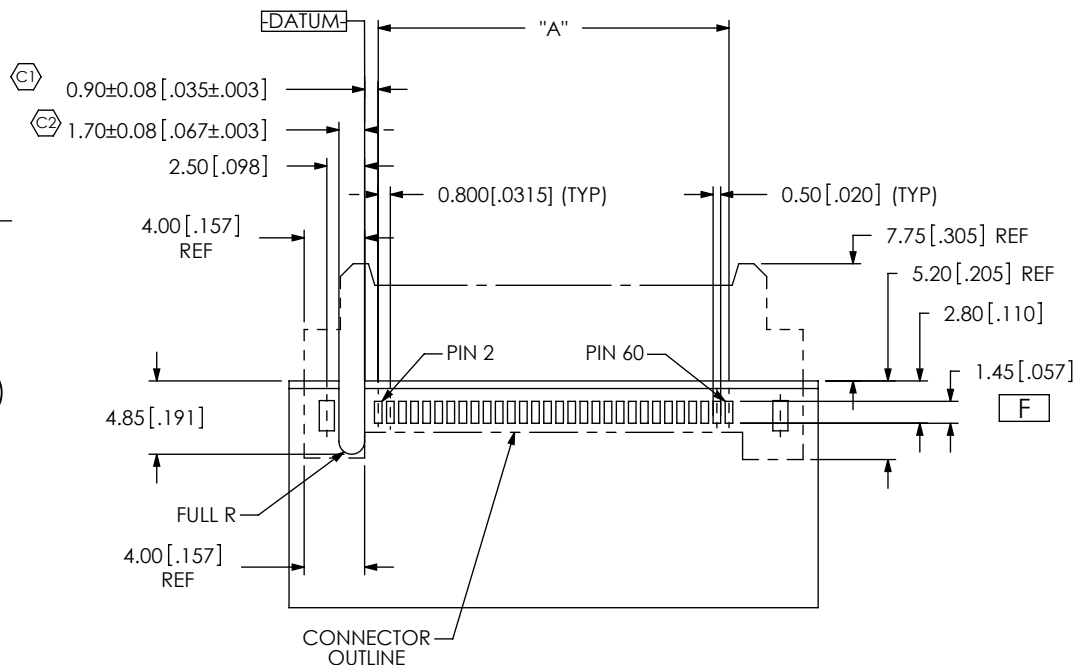
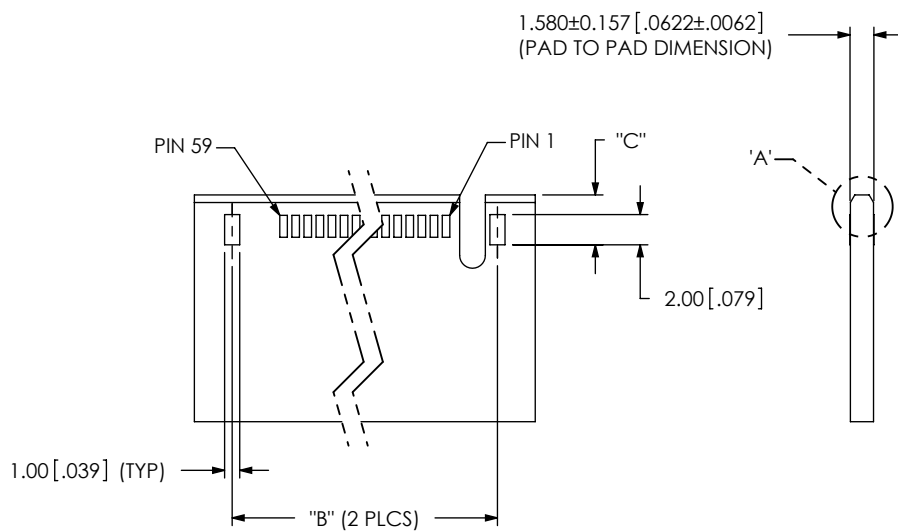
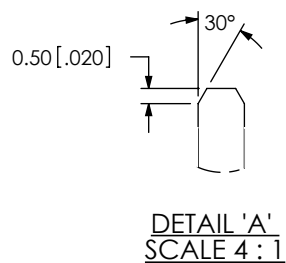


DESIGNED & DIMENSIONED IN MILLIMETERS [ENGLISH]



-30 POSITION SHOWN

TABLE 1

POSITION	"A"	"B"
-005	3.200 [.1260]	10.00 [.394]
-010	7.200 [.2835]	14.00 [.551]
-013	9.600 [.3780]	16.40 [.646]
-020	15.200 [.5984]	22.00 [.866]
-023	17.600 [.6929]	24.40 [.961]
-025	19.200 [.7559]	26.00 [1.024]
-030	23.200 [.9134]	30.00 [1.181]
-040	31.200 [1.2283]	38.00 [1.496]
-049	38.400 [1.5118]	45.20 [1.780]
-050	39.200 [1.5433]	46.00 [1.811]
-060	47.200 [1.8583]	54.00 [2.126]
-070	55.200 [2.1732]	62.00 [2.441]
-075	59.200 [2.3307]	66.00 [2.598]

UNLESS OTHERWISE SPECIFIED,
DIMENSIONS ARE IN MILLIMETERS.
TOLERANCES ARE:
DECIMALS
X.X: ±.3[.01]
X.XX: ±.10[.004]
X.XXX: ±.05[.0020]

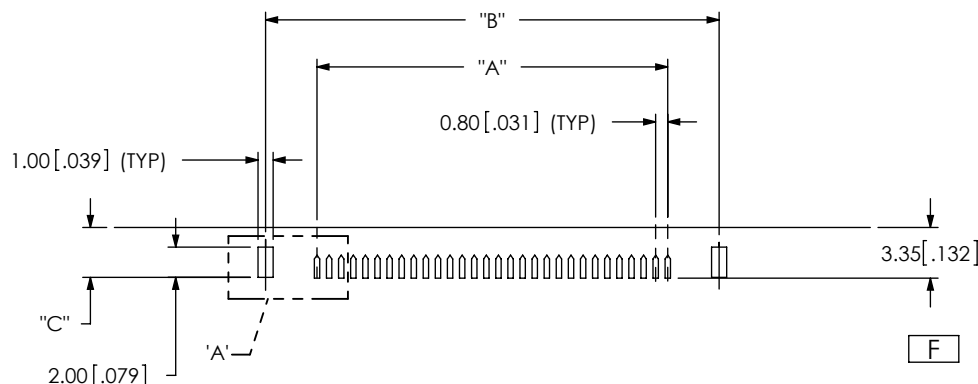
PROPRIETARY NOTE

THIS DOCUMENT CONTAINS INFORMATION
CONFIDENTIAL AND PROPRIETARY TO
SAMTEC, INC. AND SHALL NOT BE REPRODUCED
OR TRANSFERRED TO OTHER DOCUMENTS OR
DISCLOSED TO OTHERS OR USED FOR ANY
PURPOSE OTHER THAN THAT WHICH IT WAS
OBTAINED WITHOUT THE EXPRESSED WRITTEN
CONSENT OF SAMTEC, INC.

samtec

520 PARK EAST BLVD, NEW ALBANY, IN 47150
PHONE: 812-944-6733 FAX: 812-948-5047
e-Mail: info@SAMTEC.com code: 55322

DESIGNED & DIMENSIONED IN MILLIMETERS [ENGLISH]



-30 POSITION SHOWN

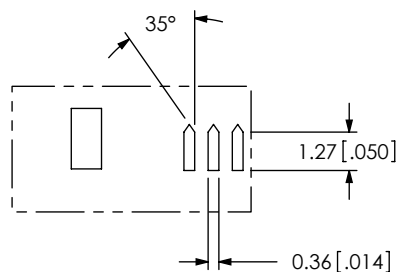
DETAIL 'A'
SCALE 4 : 1

TABLE 3

OPTION	"C"	
NONE, -L, -SL, OR -DS	3.30	[0.130]
* -EGPS	2.50	[0.098]

(* = NOT RELEASED FOR PRODUCTION)

NOTES:

1. Ⓢ REPRESENTS A CRITICAL DIMENSION.
2. MIRROR IMAGE FOOTPRINT ON OTHER SIDE OF PCB.
3. STENCIL TO BE 0.150 [.006] THICK.

TABLE 2

POSITION	"A"	"B"
-005	3.200 [.126]	10.00 [.394]
-010	7.200 [.2835]	14.00 [.551]
-013	9.600 [.3780]	16.40 [.646]
-020	15.200 [.5984]	22.00 [.866]
-023	17.600 [.6929]	24.40 [.961]
-025	19.200 [.7559]	26.00 [1.024]
-030	23.200 [.9134]	30.00 [1.181]
-040	31.200 [1.2283]	38.00 [1.496]
-049	38.400 [1.5118]	45.20 [1.780]
-050	39.200 [1.5433]	46.00 [1.811]
-060	47.200 [1.8583]	54.00 [2.126]
-070	55.200 [2.1732]	62.00 [2.441]
-075	59.200 [2.3307]	66.00 [2.598]

UNLESS OTHERWISE SPECIFIED,
DIMENSIONS ARE IN MILLIMETERS.
TOLERANCES ARE:
DECIMALS
X.X: ±.3[.01]
X.XX: ±.10[.004]
X.XXX: ±.05[.0020]

PROPRIETARY NOTE

THIS DOCUMENT CONTAINS INFORMATION
CONFIDENTIAL AND PROPRIETARY TO
SAMTEC, INC. AND SHALL NOT BE REPRODUCED
OR TRANSFERRED TO OTHER DOCUMENTS OR
DISCLOSED TO OTHERS OR USED FOR ANY
PURPOSE OTHER THAN THAT WHICH IT WAS
OBTAINED WITHOUT THE EXPRESSED WRITTEN
CONSENT OF SAMTEC, INC.

samtec

520 PARK EAST BLVD, NEW ALBANY, IN 47150
PHONE: 812-944-6733 FAX: 812-948-5047
e-Mail: info@SAMTEC.com code: 55322