

DO NOT
SCALE FROM
THIS PRINT

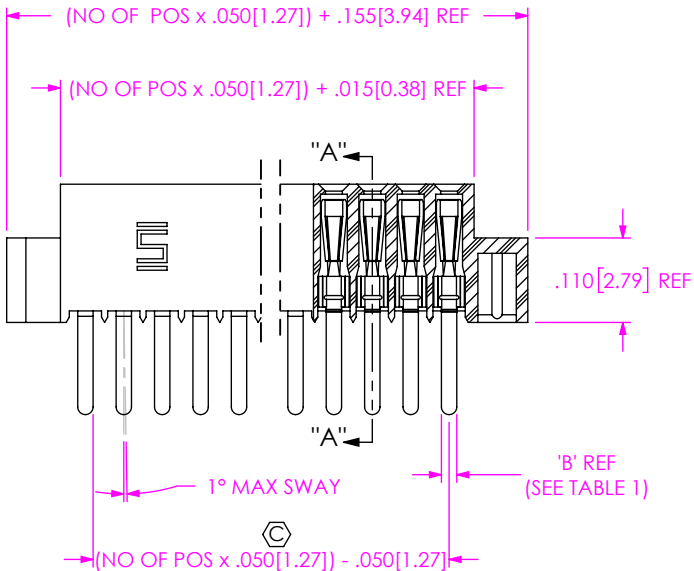
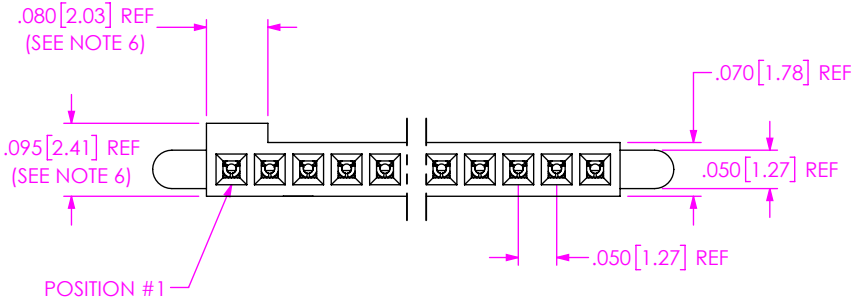
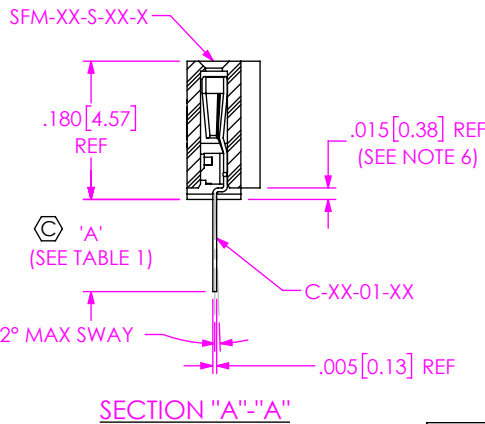


FIG 1
THROUGH HOLE/STRAIGHT MODIFIED
(SFM-130-X1-XX-S-XX SHOWN)

NO OF POSITIONS
ALL POSITIONS AVAILABLE
-02 THRU -32
USE BODY (SFM-XX-S-XX-X)

- LEAD STYLE
- 01: THROUGH HOLE
USE CONTACT: (C-44-01-XX)
(SEE FIG 1)
 - 02: SURFACE MOUNT
USE CONTACT: (C-44-02-XX)
(SEE FIG 2)
 - 03: STRAIGHT MODIFIED
USE CONTACT: (C-44-03-XX)
(SEE FIG 1)
 - L1: THROUGH HOLE (LOW INSERTION)
USE CONTACT: (C-61-01-XXX)
(SEE FIG 1)
 - L2: SURFACE MOUNT (LOW INSERTION)
USE CONTACT: (C-61-02-XXX)
(SEE FIG 2)
 - L3: STRAIGHT MODIFIED (LOW INSERTION)
USE CONTACT: (C-61-03-XX)
(SEE FIG 1)
 - T1: THROUGH HOLE (PHOS BRONZE)
USE CONTACT: (C-119-01-XXX)
(SEE FIG 1)
 - T2: SURFACE MOUNT (PHOS BRONZE)
USE CONTACT: (C-119-02-XXX)
(SEE FIG 1)

* = NOT TOOLED



- OPTIONS
(LEAVE BLANK FOR STANDARD
AND USE SFM-XX-S-LC-X)
-N: NO POLARIZATION NOTCH
(USE SFM-XX-S-XX-N)
-A: ALIGNMENT PIN (USE SFM-XX-S-A-X)
(SEE FIG 3)
-LC: LOCKING CLIP (SEE FIG 5) (SEE NOTE 5)
(USE (2) LC-05-TM & SFM-XX-S-LC-X)
-P: PICK AND PLACE PAD (SEE FIG 4)
(USE PPP-14)
(AVAILABLE ON 5 THRU 50 POS ONLY)
-K: POLYIMIDE FILM (SEE FIG 6, SHT 2)
-TR: TAPE AND REEL (-X2 LEAD STYLE ONLY)
* -SN: SOLDER NAIL (SEE SHT 3, FIG 7)

BODY SPECIFICATION
-S: SINGLE ROW

- PLATING SPECIFICATION
- S: 30μ" SELECTIVE GOLD IN CONTACT AREA,
MATTE TIN ON TAIL
 - F: 3μ" SELECTIVE GOLD IN CONTACT AREA,
MATTE TIN ON TAIL
 - L: 10μ" SELECTIVE GOLD IN CONTACT AREA,
MATTE TIN ON TAIL
 - SM: 30μ" SELECTIVE GOLD IN CONTACT AREA,
MATTE TIN ON TAIL
 - FM: 3μ" SELECTIVE GOLD IN CONTACT AREA,
MATTE TIN ON TAIL
 - LM: 10μ" SELECTIVE GOLD IN CONTACT AREA,
MATTE TIN ON TAIL

-LM: SELECTIVE LIGHT GOLD
-SPECIFY -L IN PLATING SUFFIX -X/
MATTE TIN TAILS
(USE C-XX-XX-L)

NOTES:

1. Ⓢ REPRESENTS A CRITICAL DIMENSION FOR STATISTICAL PROCESS CONTROL.
2. MINIMUM PUSHOUT FORCE: .5 LBS
3. COPLANARITY TO BE WITHIN .004 [0.10]
4. TUBE ALL POSITIONS.
5. DUE TO THE HIGH AMOUNT OF INSERTION FORCE NEEDED, THE -LC OPTION IS NOT COMPATIBLE WITH AUTO PLACEMENT. SAMTEC RECOMMENDS MANUAL PLACEMENT FOR ALL ASSEMBLIES WITH THE -LC OPTION.
6. DIMENSION N/A FOR -N OPTION.

UNLESS OTHERWISE SPECIFIED,
DIMENSIONS ARE IN INCHES.
TOLERANCES ARE:
DECIMALS ANGLES
.XX: ±.01 [0.3]
.XXX: ±.005 [0.13]
.XXXX: ±.0020 [0.051]

PROPRIETARY NOTE
THIS DOCUMENT CONTAINS CONFIDENTIAL AND
PROPRIETARY INFORMATION AND ALL DESIGN,
MANUFACTURING, REPRODUCTION, USE, PATENT RIGHTS
AND SALES RIGHTS ARE EXPRESSLY RESERVED BY SAMTEC,
INC. THIS DOCUMENT SHALL NOT BE DISCLOSED, IN WHOLE
OR PART, TO ANY UNAUTHORIZED PERSON OR ENTITY NOR
REPRODUCED, TRANSFERRED OR INCORPORATED IN ANY
OTHER PROJECT IN ANY MANNER WITHOUT THE EXPRESS
WRITTEN CONSENT OF SAMTEC, INC.

MATERIAL: DO NOT SCALE DRAWING SHEET SCALE: 4:1
INSULATOR: VECTRA E130, COLOR: BLACK
CONTACT: BeCu #25

MAX FLASH ALLOWED: .002 [0.05]
MAX GATE VESTIGE: .002 [0.05]

F:\DWG\MISC\MKTG\SFM-1XX-XX-XX-S-XX-MKT.SLDDRW

TABLE 1		
SUFFIX	TAIL LENGTH 'A'	TAIL WIDTH 'B'
-X1	.120 [3.05]	.020 [0.51]
-X3	.075 [1.91]	.016 [0.41]

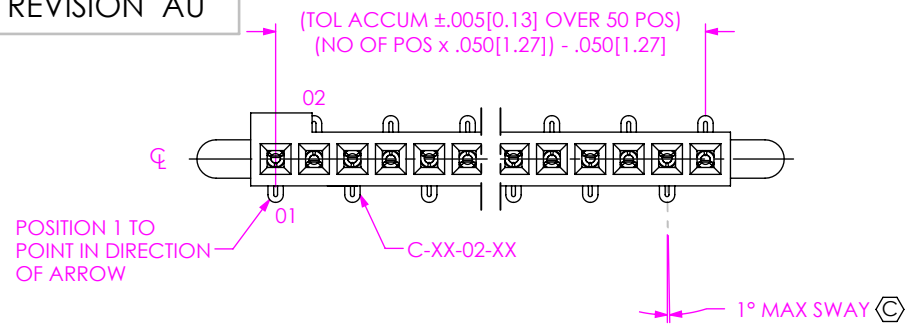
samtec

520 PARK EAST BLVD, NEW ALBANY, IN 47150
PHONE: 812-944-6733 FAX: 812-948-5047
e-Mail: info@SAMTEC.com code 55322

DESCRIPTION: .050 [1.27] C.L. SOCKET STRIP
SINGLE ROW ASSEMBLY

DWG. NO. SFM-1XX-XX-XX-S-XX

BY: REIDINGER 09/08/1992 SHEET 1 OF 3



POSITION 1 TO
POINT IN DIRECTION
OF ARROW

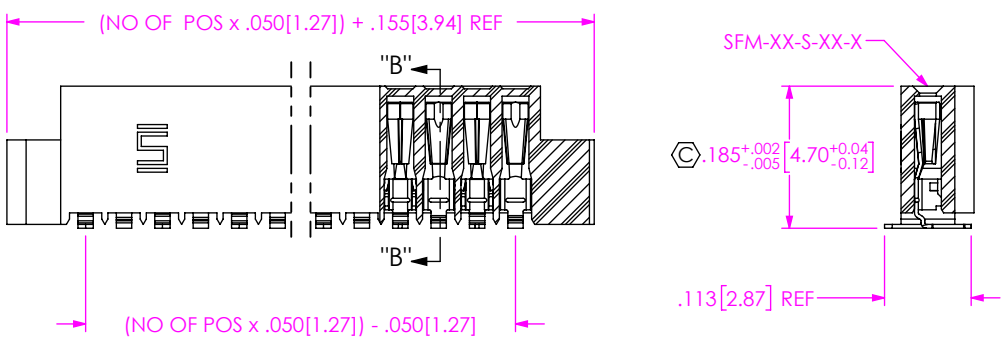


FIG 2
SURFACE MOUNT
DIFFERENT AS SHOWN, OTHERWISE SAME AS FIG 1
(SFM-130-02-XX-S-XX SHOWN)

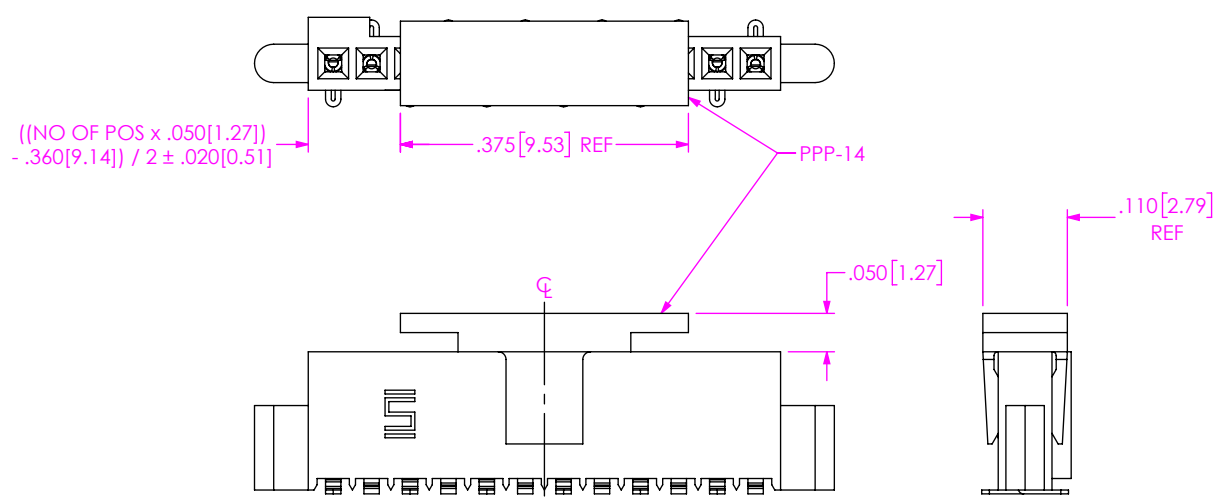


FIG 4
-P: PICK & PLACE PAD
DIFFERENT AS SHOWN, OTHERWISE SAME AS FIG 1
(PLACE PAD ABOUT C.L. AS SHOWN)
(SFM-112-02-XX-S-P SHOWN)

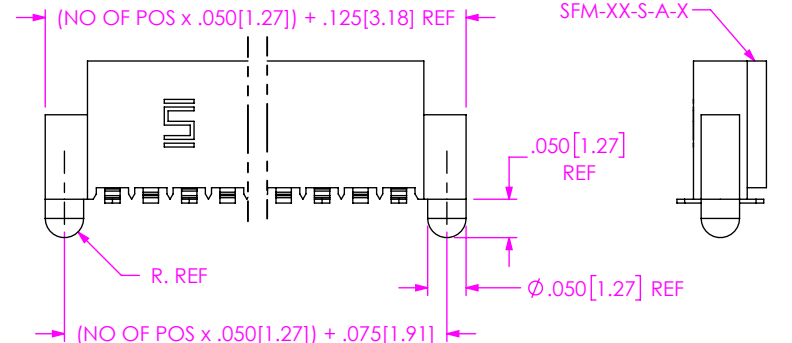


FIG 3
-A: ALIGNMENT PIN
DIFFERENT AS SHOWN, OTHERWISE SAME AS FIG 1
(SFM-125-02-XX-S-A SHOWN)

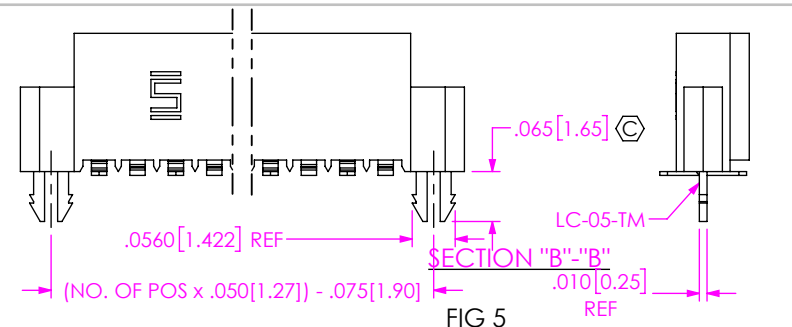


FIG 5
-LC: LOCKING CLIP
DIFFERENT AS SHOWN, OTHERWISE SAME AS FIG 1
(SFM-112-02-XX-S-LC SHOWN)

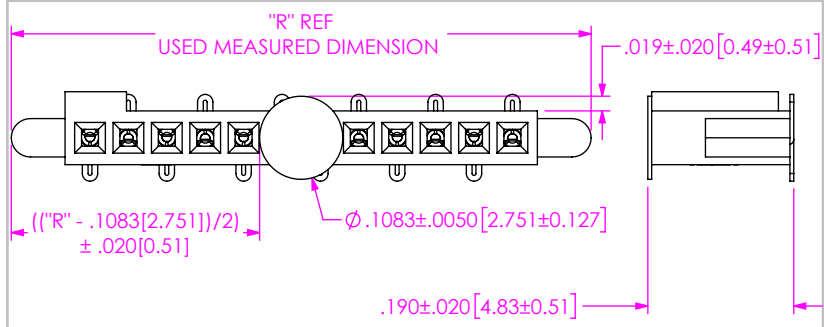


FIG 6
-K: OPTION (POLYIMIDE FILM PAD)
DIFFERENT AS SHOWN, OTHERWISE SAME AS FIG 1
(SFM-112-02-XX-S-K SHOWN)

PROPRIETARY NOTE
THIS DOCUMENT CONTAINS CONFIDENTIAL AND
PROPRIETARY INFORMATION AND ALL DESIGN,
MANUFACTURING, REPRODUCTION, USE, PATENT RIGHTS
AND SALES RIGHTS ARE EXPRESSLY RESERVED BY SAMTEC,
INC. THIS DOCUMENT SHALL NOT BE DISCLOSED, IN WHOLE
OR PART, TO ANY UNAUTHORIZED PERSON OR ENTITY NOR
REPRODUCED, TRANSFERRED OR INCORPORATED IN ANY
OTHER PROJECT IN ANY MANNER WITHOUT THE EXPRESS
WRITTEN CONSENT OF SAMTEC, INC.

samtec
520 PARK EAST BLVD, NEW ALBANY, IN 47150
PHONE: 812-944-6733 FAX: 812-948-5047
e-Mail info@SAMTEC.com code 55322

SHEET SCALE: 4:1

DESCRIPTION: $.050[1.27]$ C.L. SOCKET STRIP
SINGLE ROW ASSEMBLY

DWG. NO. SFM-1XX-XX-XX-S-XX

BY: REIDINGER 09/08/1992 SHEET 2 OF 3

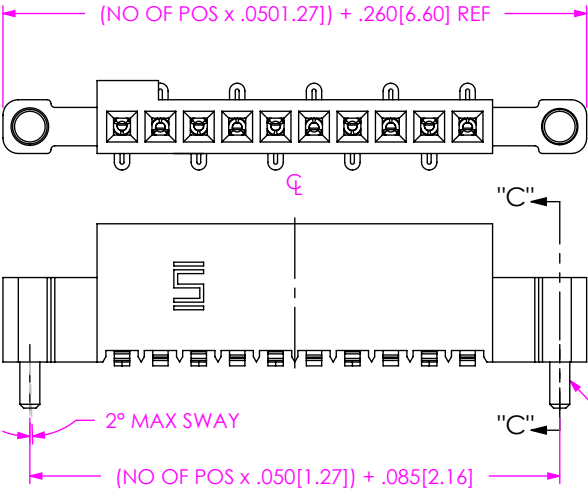
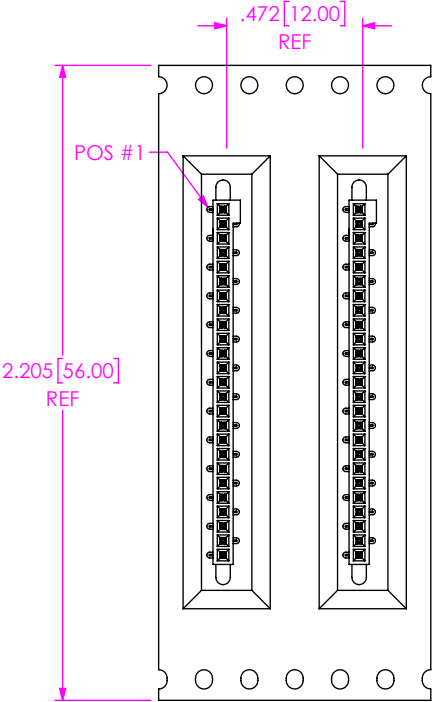
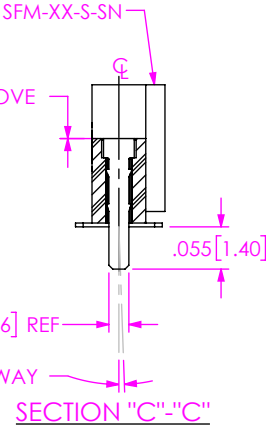
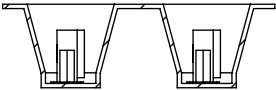


FIG 7
*SN: SOLDER NAIL OPTION
DIFFERENT AS SHOWN, OTHERWISE SAME AS FIG 1
(SFM-110-02-XX-S-SN SHOWN)

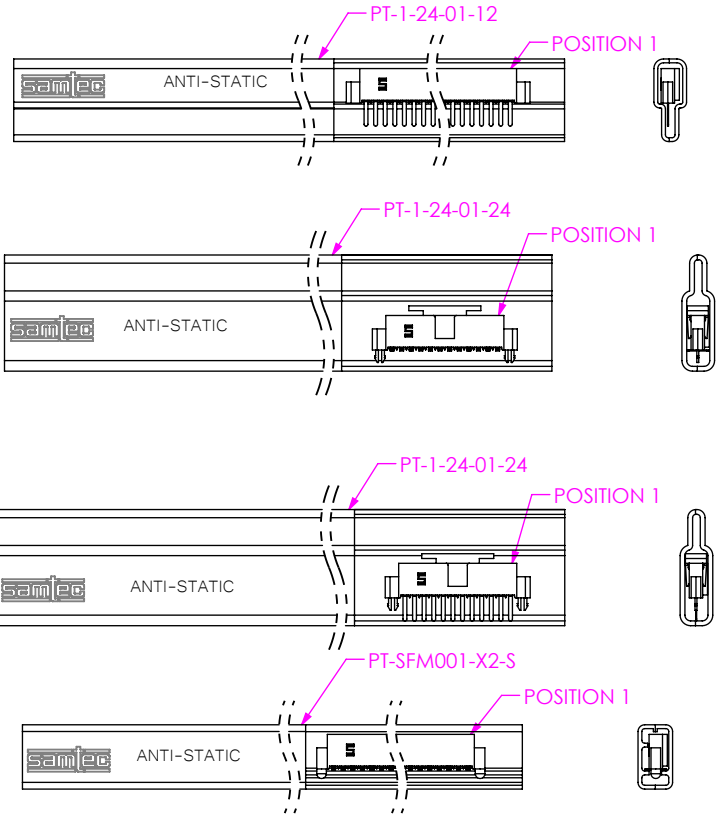


USER DIRECTION OF UN-REELING
POCKET NOT DETAILED



-TR: TAPE AND REEL
(SFM-125-02-XX-S-XX SHOWN)

PACKAGE PARTS IN TUBE AS SHOWN



PACKAGING TUBE TABLE

LEAD STYLE	PACKAGING TUBE	PLUG
-X1-S	PT-SFM005-X1-X3-S	TP-12
-X1-S-A	PT-SFM005-X1-X3-S	TP-12
-X1-S-LC	PT-SFM005-X1-X3-S	TP-12
-X1-S-P	PT-1-24-01-24	TP-24
-X1-S-A-P	PT-1-24-01-24	TP-24
-X1-S-LC-P	PT-1-24-01-24	TP-24
-X2-S	PT-1-24-01-12	TP-12
-X2-S-A	PT-SFM001-X2-S	TP-12
-X2-S-K	PT-SFM001-X2-S	TP-12
-X2-S-LC-K	PT-SFM001-X2-S	TP-12
-X3-S-SN	PT-SFM001-X2-S	TP-12
-X2-S-LC	PT-SFM001-X2-S	TP-12
-X2-S-P	PT-SFM002-X2-S	TP-12
-X2-S-A-P	PT-1-24-01-24	TP-24
-X2-S-LC-P	PT-SFM002-X2-S	TP-12
-X3-S	PT-SFM005-X1-X3-S	TP-12
-X3-S-A	PT-SFM005-X1-X3-S	TP-12
-X3-S-LC	PT-SFM005-X1-X3-S	TP-12
-X3-S-P	PT-1-24-01-24	TP-24
-X3-S-A-P	PT-1-24-01-24	TP-24
-X3-S-LC-P	PT-1-24-01-24	TP-24

PROPRIETARY NOTE

THIS DOCUMENT CONTAINS CONFIDENTIAL AND PROPRIETARY INFORMATION AND ALL DESIGN, MANUFACTURING, REPRODUCTION, USE, PATENT RIGHTS AND SALES RIGHTS ARE EXPRESSLY RESERVED BY SAMTEC, INC. THIS DOCUMENT SHALL NOT BE DISCLOSED, IN WHOLE OR PART, TO ANY UNAUTHORIZED PERSON OR ENTITY NOR REPRODUCED, TRANSFERRED OR INCORPORATED IN ANY OTHER PROJECT IN ANY MANNER WITHOUT THE EXPRESS WRITTEN CONSENT OF SAMTEC, INC.

SHEET SCALE: 4:1



520 PARK EAST BLVD, NEW ALBANY, IN 47150
PHONE: 812-944-6733 FAX: 812-948-5047
e-Mail info@SAMTEC.com code 55322

DESCRIPTION: .050 [1.27] C.L. SOCKET STRIP
SINGLE ROW ASSEMBLY

DWG. NO. SFM-1XX-XX-XX-S-XX

BY: REIDINGER 09/08/1992 SHEET 3 OF 3