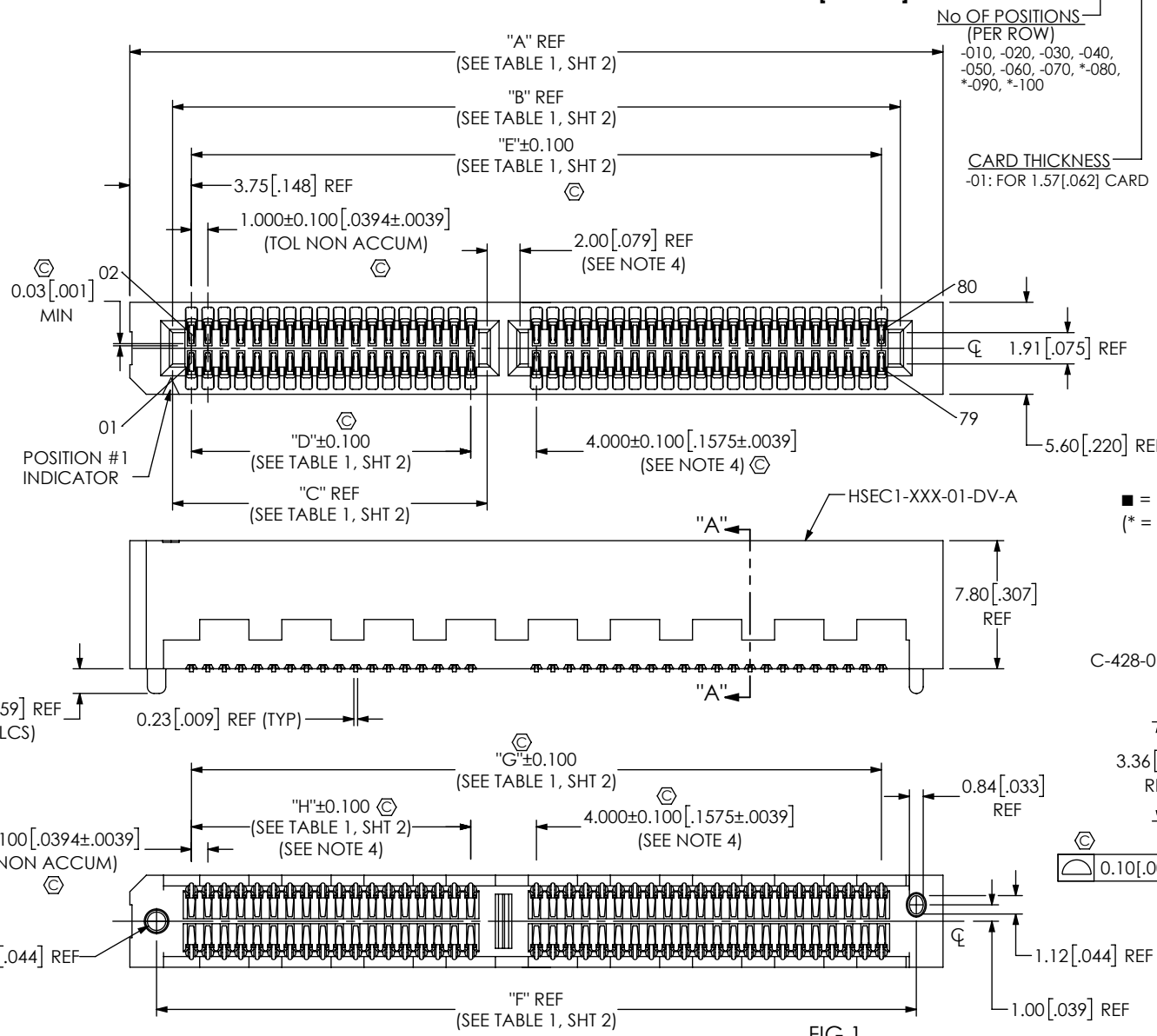


DO NOT SCALE FROM THIS PRINT

DESIGNED & DIMENSIONED IN MILLIMETERS [INCHES]

HSEC1-XXX-01-X-DV-XX-X-XX



No OF POSITIONS (PER ROW)  
-010, -020, -030, -040, -050, -060, -070, \*-080, \*-090, \*-100

CARD THICKNESS  
-01: FOR 1.57 [.062] CARD

PACKAGING  
-TR: TAPE & REEL (REQUIRED FOR POS: 010-060) (LEAVE BANK FOR TRAY PACKAGING, ONLY AVAILABLE FOR POS 070-100.) (SEE NOTE 6 & 7)

OPTION 2  
-K: POLYIMIDE FILM PAD (SEE FIG 3, SHT 3)

OPTION 1  
-A: ALIGNMENT PIN (SEE FIG 1 & NOTE 8)  
-WT: WELD TAB (SEE FIG 2, SHT 2 & NOTE 8)

ROW SPECIFICATION  
-DV: DOUBLE VERTICAL

PLATING SPECIFICATION  
-S: 30µ" SELECTIVE GOLD IN CONTACT AREA, MATTE TIN ON TAIL  
-L: 10µ" SELECTIVE GOLD IN CONTACT AREA, MATTE TIN ON TAIL  
-F: 3µ" SELECTIVE GOLD IN CONTACT AREA, MATTE TIN ON TAIL

■ = NOT AVAILABLE WITH -A OPTION  
(\* = NOT TOOLED)

FIG 1 HSEC1-040-01-X-DV-A-X-TR SHOWN

- NOTES:
1. Ⓢ REPRESENTS A CRITICAL DIMENSION.
  2. DIMENSIONS MEASURED TIP TO TIP.
  3. MATING CARD MUST HAVE LEAD-IN. SEE SAMTEC FOOTPRINT FOR SPECIFICATIONS.
  4. POLARIZATION RIB IS NOT PRESENT ON -10, -20 & -30 POSITIONS.
  5. MINIMUM PUSHOUT FORCE: SIGNAL: 2.2N, WELD TAB: 4.45N.
  6. FOR QUANTITIES UP TO 49 PCS., NO LEADER, TRAILER OR REEL WILL BE SUPPLIED.
  7. FOR QUANTITIES OF 50-124 PCS., NO LEADER OR TRAILER WILL BE SUPPLIED, SPLICES MAY BE PRESENT.
  8. 010-060 POSITIONS PARTS TO BE PACKAGED IN TAPE & REEL, 070-100 POSITIONS PARTS TO BE PACKAGED IN TRAY.
  9. PART MUST HAVE EITHER -A OR -WT AS REQUIRED, -A NOT AVAILABLE WITH -WT OPTION.

UNLESS OTHERWISE SPECIFIED, DIMENSIONS ARE IN MILLIMETERS. TOLERANCES ARE:  
DECIMALS ANGLES  
X.X: ±0.3 [.01] 2°  
X.XX: ±0.13 [.005]  
X.XXX: ±0.051 [.0020]

PROPRIETARY NOTE  
THIS DOCUMENT CONTAINS CONFIDENTIAL AND PROPRIETARY INFORMATION AND ALL DESIGN, MANUFACTURING, REPRODUCTION, USE, PATENT RIGHTS AND SALES RIGHTS ARE EXPRESSLY RESERVED BY SAMTEC, INC. THIS DOCUMENT SHALL NOT BE DISCLOSED, IN WHOLE OR PART, TO ANY UNAUTHORIZED PERSON OR ENTITY NOR REPRODUCED, TRANSFERRED OR INCORPORATED IN ANY OTHER PROJECT IN ANY MANNER WITHOUT THE EXPRESS WRITTEN CONSENT OF SAMTEC, INC.



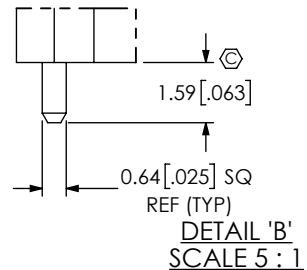
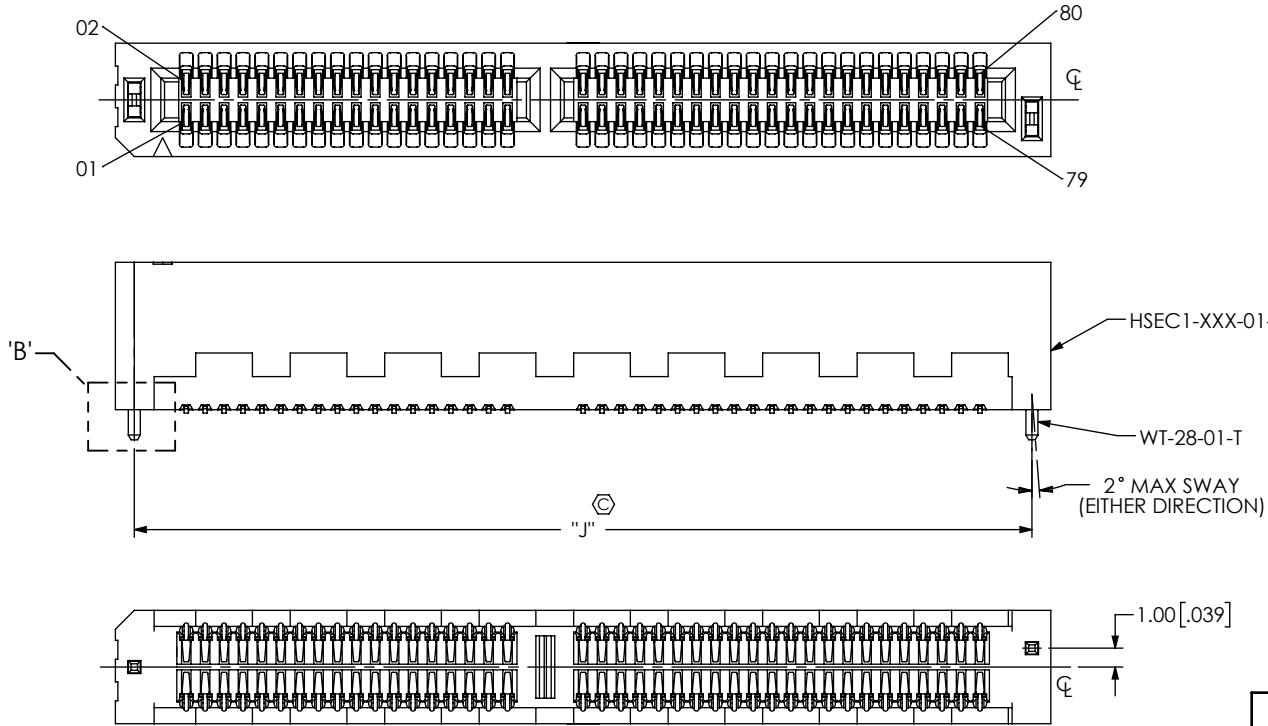
520 PARK EAST BLVD., NEW ALBANY, IN 47150  
PHONE: 812-944-6733 FAX: 812-948-5047  
e-Mail: info@SAMTEC.com code 53322

MATERIAL: DO NOT SCALE DRAWING SHEET SCALE: 3:1  
INSULATOR: LCP, UL 94 V0, COLOR: BLACK  
CONTACT: PHOS BRONZE  
WELD TAB: BRASS ALLOY

DESCRIPTION:  
1.00mm DV HIGH SPEED EDGE CARD ASSEMBLY  
DWG. NO.  
HSEC1-XXX-01-X-DV-XX-X-XX

NO OF POS	"A"	"B"	"C"	"D"	"E"	"F"	"G"	"H"
-010	16.50 [.650]	11.30 [.445]	N/A	N/A	9.000 [.3543]	13.25 [.5217]	9.000 [.3543]	N/A
-020	26.50 [1.043]	21.30 [.839]	N/A	N/A	19.000 [.7480]	23.25 [.9154]	19.000 [.7480]	N/A
-030	36.50 [1.437]	31.30 [1.232]	N/A	N/A	29.000 [1.1417]	33.25 [1.309]	29.000 [1.1417]	N/A
-040	49.50 [1.949]	44.30 [1.744]	19.15 [.7539]	17.000 [.6693]	42.000 [1.6535]	46.25 [1.821]	42.000 [1.6535]	17.000 [0.6693]
-050	59.50 [2.343]	54.30 [2.138]	24.15 [.9508]	22.000 [.8661]	52.000 [2.0472]	56.25 [2.215]	52.000 [2.0472]	22.000 [0.8661]
-060	69.50 [2.736]	64.30 [2.531]	29.15 [1.148]	27.000 [1.0630]	62.000 [2.4409]	66.25 [2.608]	62.000 [2.4409]	27.000 [1.0630]
-070	79.50 [3.130]	74.30 [2.925]	34.15 [1.344]	32.000 [1.2598]	72.000 [2.8346]	76.25 [3.002]	72.000 [2.8346]	32.000 [1.2598]
*-080	89.50 [3.524]	84.30 [3.319]	39.15 [1.541]	37.000 [1.4567]	82.000 [3.2283]	86.25 [3.396]	82.000 [3.2283]	37.000 [1.4567]
*-090	99.50 [3.917]	94.30 [3.713]	44.15 [1.738]	42.000 [1.6535]	92.000 [3.6220]	96.25 [3.789]	92.000 [3.6220]	42.000 [1.6535]
*-100	109.50 [4.311]	104.30 [4.106]	49.15 [1.935]	47.000 [1.8504]	102.000 [4.0157]	106.25 [4.183]	102.000 [4.0157]	47.000 [1.8504]

(\* = NOT TOOLED)



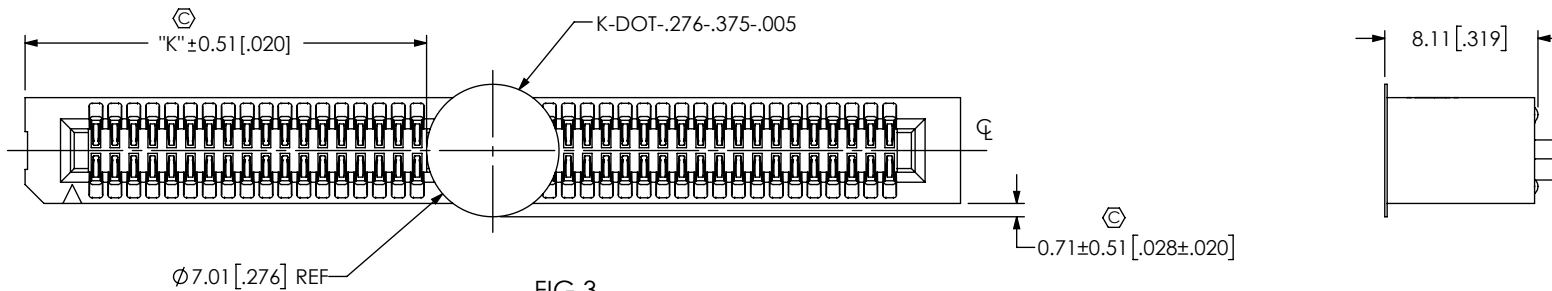
No Of POS	"J"
-010	14.50 [.571]
-020	24.50 [.965]
-030	34.50 [1.358]
-040	47.50 [1.870]
-050	57.50 [2.264]
-060	67.50 [2.657]
-070	77.50 [3.051]
*-080	87.50 [3.445]
*-090	97.50 [3.839]
*-100	107.50 [4.232]

(\* = NOT TOOLED)

FIG 2  
HSEC1-040-01-X-DV-WT-X-TR SHOWN  
(DIFFERENT AS SHOWN, OTHERWISE SAME AS FIG 1)

c:\enterprise\vauf\DWG\MISC\MKTG\HSEC1-XXX-01-X-DV-XX-X-XX-MKT.SLDDRW


<p>DO NOT SCALE DRAWING</p> <p>SHEET SCALE: 2.5:1</p>	<p><b>PROPRIETARY NOTE</b></p> <p>THIS DOCUMENT CONTAINS CONFIDENTIAL AND PROPRIETARY INFORMATION AND ALL DESIGN, MANUFACTURING, REPRODUCTION, USE, PATENT RIGHTS AND SALES RIGHTS ARE EXPRESSLY RESERVED BY SAMTEC, INC. THIS DOCUMENT SHALL NOT BE DISCLOSED, IN WHOLE OR PART, TO ANY UNAUTHORIZED PERSON OR ENTITY NOR REPRODUCED, TRANSFERRED OR INCORPORATED IN ANY OTHER PROJECT IN ANY MANNER WITHOUT THE EXPRESS WRITTEN CONSENT OF SAMTEC, INC.</p>	<p>520 PARK EAST BLVD, NEW ALBANY, IN 47150 PHONE: 812-944-6733 FAX: 812-948-5047 e-Mail: info@SAMTEC.com code 55322</p>
	<p>DESCRIPTION: 1.00mm DV HIGH SPEED EDGE CARD ASSEMBLY</p>	
	<p>DWG. NO. HSEC1-XXX-01-X-DV-XX-X-XX</p>	
<p>BY: SHERRY W 1/21/2016</p>		<p>SHEET 2 OF 3</p>



**FIG 3**  
HSEC1-040-01-X-DV-A-K-TR SHOWN  
(DIFFERENT AS SHOWN, OTHERWISE SAME AS FIG 1)

TABLE 3	
No OF POS	"K"
-010	4.74 [.187]
-020	9.74 [.383]
-030	14.74 [.580]
-040	21.24 [.836]
-050	26.24 [1.033]
-060	31.24 [1.230]
-070	36.24 [1.427]
*-080	41.24 [1.624]
*-090	46.24 [1.820]
*-100	51.24 [2.017]

(\* = NOT TOOLED)

<p>DO NOT SCALE DRAWING</p> <p>SHEET SCALE: 2.5:1</p>	<p><b>PROPRIETARY NOTE</b></p> <p>THIS DOCUMENT CONTAINS CONFIDENTIAL AND PROPRIETARY INFORMATION AND ALL DESIGN, MANUFACTURING, REPRODUCTION, USE, PATENT RIGHTS AND SALES RIGHTS ARE EXPRESSLY RESERVED BY SAMTEC, INC. THIS DOCUMENT SHALL NOT BE DISCLOSED, IN WHOLE OR PART, TO ANY UNAUTHORIZED PERSON OR ENTITY NOR REPRODUCED, TRANSFERRED OR INCORPORATED IN ANY OTHER PROJECT IN ANY MANNER WITHOUT THE EXPRESS WRITTEN CONSENT OF SAMTEC, INC.</p>	 <p>520 PARK EAST BLVD, NEW ALBANY, IN 47150 PHONE: 812-944-6733 FAX: 812-948-5047 e-Mail info@SAMTEC.com code 55322</p>
	<p>DESCRIPTION: 1.00mm DV HIGH SPEED EDGE CARD ASSEMBLY</p>	
	<p>DWG. NO. HSEC1-XXX-01-X-DV-XX-X-XX</p>	
<p>BY: SHERRY W 1/21/2016</p>		<p>SHEET 3 OF 3</p>