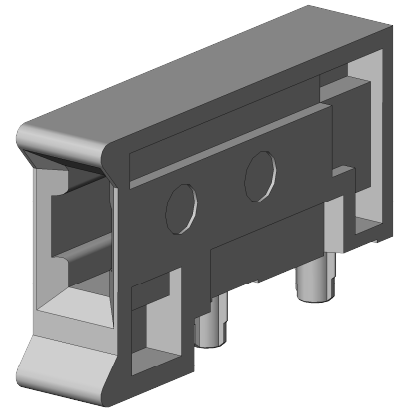
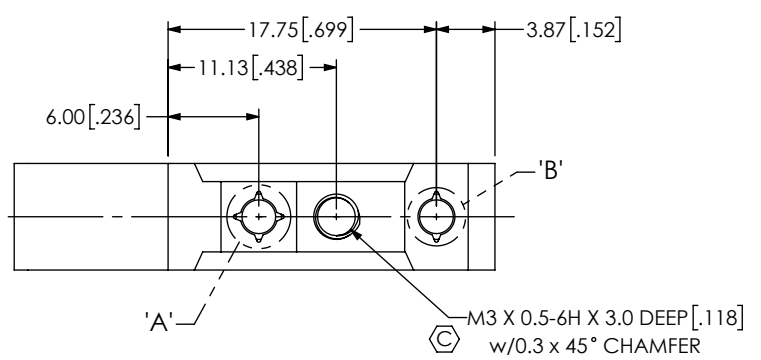
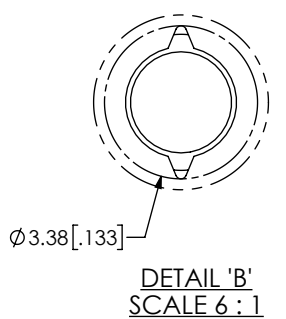
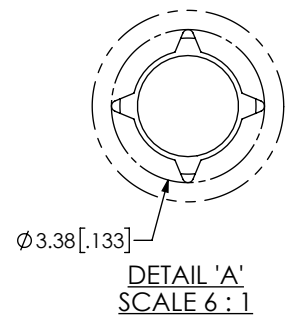
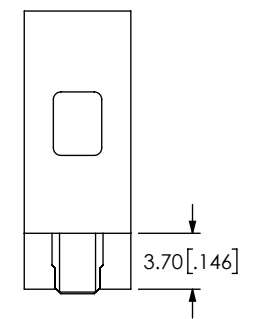
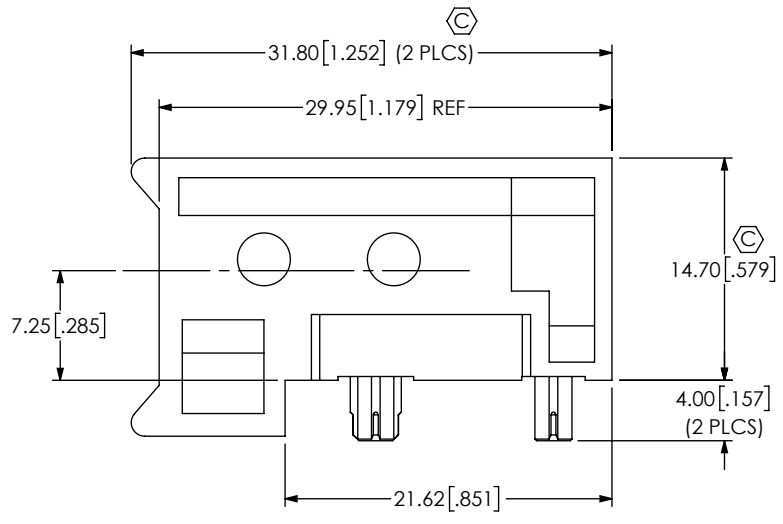
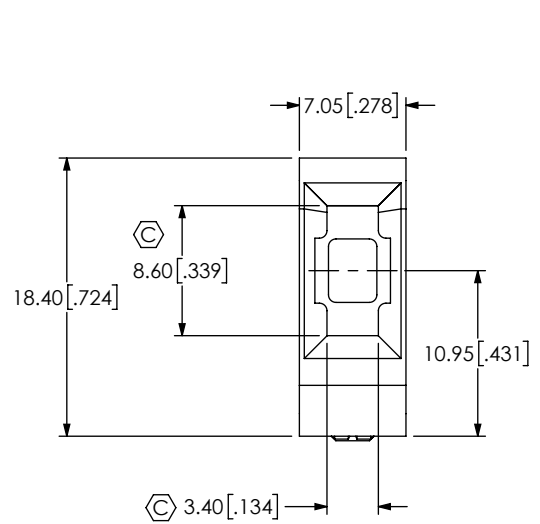


DO NOT SCALE FROM THIS PRINT



- NOTES:
- ⊕ REPRESENTS A CRITICAL DIMENSION.
  - STANDARD PACKAGING: USE ASBBLT6X8.5 BAG, 100 PCS MAXIMUM.
  - SEE EGBF-RA-XX-FOOTPRINT DRAWING FOR RECOMMENDED PCB LAYOUT AND INFORMATION REGARDING PCB LAYOUT OF GUIDE MODULES RELATIVE TO SIGNAL MODULES.

|  |   |   |  |
|--|---|---|--|
| UNLESS OTHERWISE SPECIFIED, DIMENSIONS ARE IN MILLIMETERS [INCHES]. TOLERANCES ARE:<br>DECIMALS ANGLES<br>X.X: ±0.3 2°<br>X.XX: ±0.10<br>X.XXX: ±0.050 | * PROPRIETARY NOTE<br>THIS DOCUMENT CONTAINS CONFIDENTIAL AND PROPRIETARY INFORMATION AND ALL DESIGN, MANUFACTURING, REPRODUCTION, USE, PATENT RIGHTS AND SALES RIGHTS ARE EXPRESSLY RESERVED BY SAMTEC, INC. THIS DOCUMENT SHALL NOT BE DISCLOSED, IN WHOLE OR PART, TO ANY UNAUTHORIZED PERSON OR ENTITY NOR REPRODUCED, TRANSFERRED OR INCORPORATED IN ANY OTHER PROJECT IN ANY MANNER WITHOUT THE EXPRESS WRITTEN CONSENT OF SAMTEC, INC. | DESCRIPTION:<br><b>EXAMAX™ RIGHT ANGLE GUIDE RECEPTACLE</b> |  |
|  |   | DWG. NO. <b>EGBF-RA-20</b>                                  |  |
| MATERIAL:<br>ZINC ALLOY<br>FINISH:<br>ZINC YELLOW CHROMATE   |   | BY: KNOWLDEN 9/9/2015 SHEET 1 OF 1                          |  |