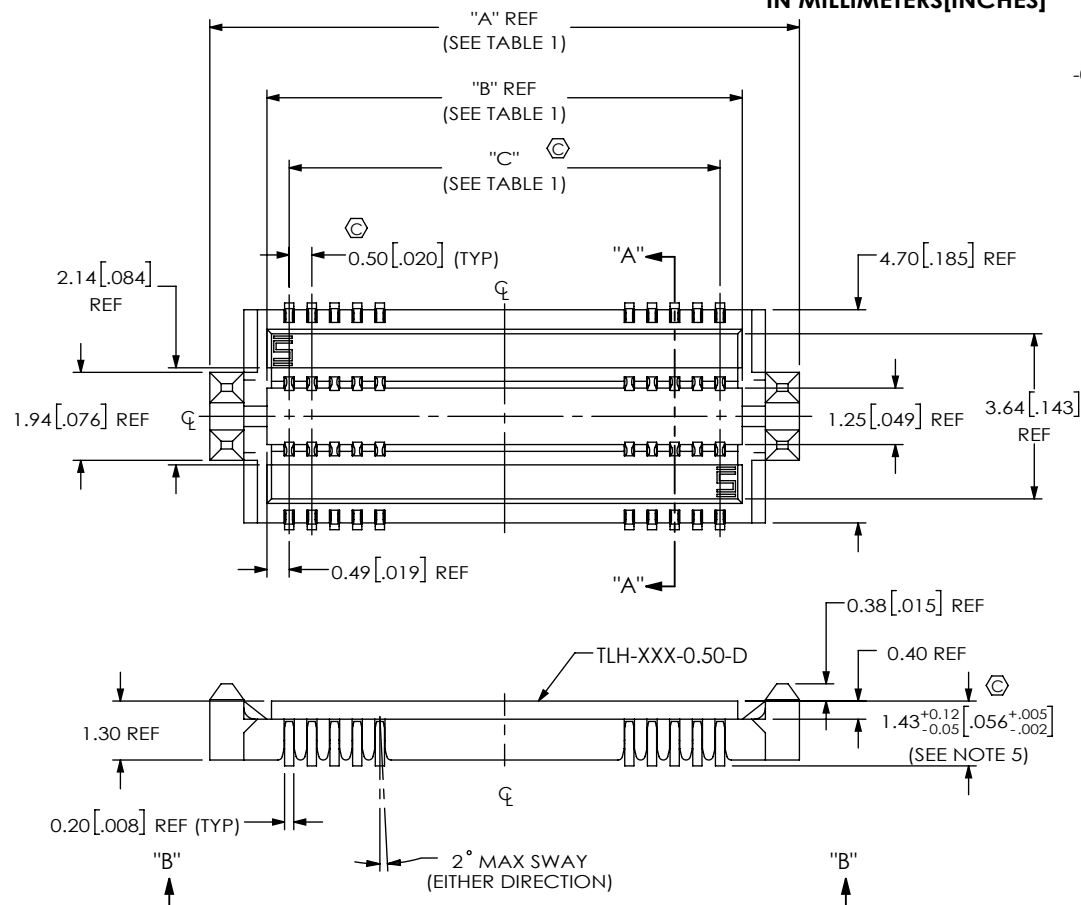


DESIGNED & DIMENSIONED
IN MILLIMETERS [INCHES]



TLH-XXX-X.XX-X-D-X-X

No. OF POSITIONS
-010, -020, -030, *-040,
(PER ROW)

LEAD STYLE
-0.50

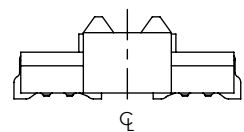
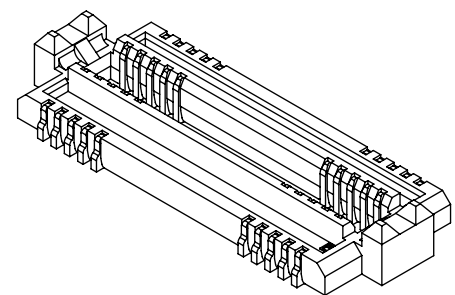
(* = EXISTING CUSTOMER ONLY)

OPTION
-K: K-DOT
(SEE FIG 2, SHT 2)

OPTION
-A: ALIGNMENT PIN
(SEE FIG 3, SHT 3)

ROW SPECIFICATION
-D: DOUBLE ROW

PLATING SPECIFICATION
-G: 10μ" MIN Au IN CONTACT,
3μ" MIN Au ON TAIL



PATENT NUMBER
8,979,551

FIG 1
TLH-020-0.50-X-D SHOWN
(SOME CENTER FEATURES NOT SHOWN FOR CLARITY)

TABLE 1

NO OF POSITIONS	"A"	"B"	"C"	"D"	"E"	"F"
-010	8.000 [.3150]	5.480 [.2157]	4.50 [.177]	4.500 [.1772]	2.500 [.0984]	6.400 [.2520]
-020	13.000 [.5118]	10.480 [.4126]	9.50 [.374]	9.500 [.3740]	5.000 [.1969]	11.400 [.4488]
-030	18.000 [.7087]	15.480 [.6094]	14.50 [.571]	14.500 [.5709]	7.500 [.2953]	16.400 [.6457]
*-040	23.000 [.9055]	20.480 [.8063]	19.50 [.768]	19.500 [.7677]	10.000 [.3937]	21.400 [.8425]

(* = EXISTING CUSTOMER ONLY)

NOTES:

1. Ⓢ REPRESENTS A CRITICAL DIMENSION.
2. MINIMUM PUSHOUT FORCE: 1.1N [.25 LB].
3. DELETED.
4. FOR QUANTITIES UP TO 49 PIECES, NO LEADER, TRAILER OR REEL WILL BE SUPPLIED
FOR QUANTITIES OF 50-124, NO LEADER OR TRAILER WILL BE SUPPLIED.
5. USE MEASURING FIXTURE AT-2617-802

UNLESS OTHERWISE SPECIFIED,
DIMENSIONS ARE IN MILLIMETERS.
TOLERANCES ARE:
DECIMALS ANGLES
X.X: ±0.3 [.01] 2°
X.XX: ±0.13 [.005]
X.XXX: ±0.051 [.0020]

PROPRIETARY NOTE
THIS DOCUMENT CONTAINS CONFIDENTIAL AND
PROPRIETARY INFORMATION AND ALL DESIGN,
MANUFACTURING, REPRODUCTION, USE, PATENT RIGHTS
AND SALES RIGHTS ARE EXPRESSLY RESERVED BY SAMTEC,
INC. THIS DOCUMENT SHALL NOT BE DISCLOSED, IN WHOLE
OR PART, TO ANY UNAUTHORIZED PERSON OR ENTITY NOR
REPRODUCED, TRANSFERRED OR INCORPORATED IN ANY
OTHER PROJECT IN ANY MANNER WITHOUT THE EXPRESS
WRITTEN CONSENT OF SAMTEC, INC.



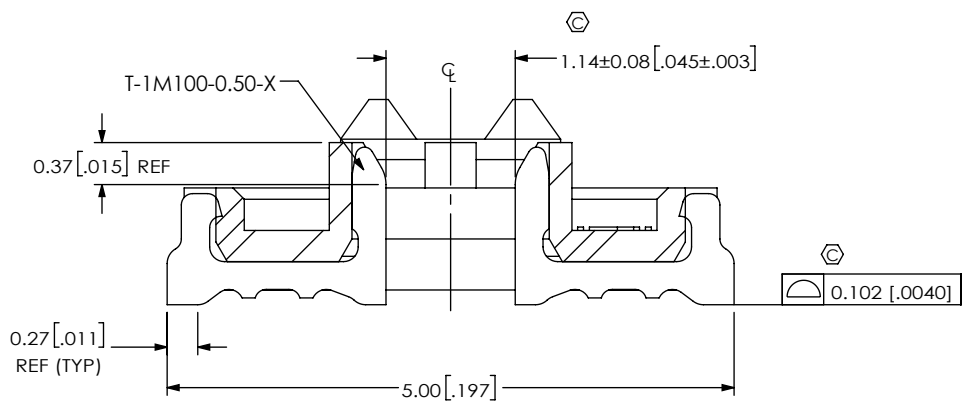
520 PARK EAST BLVD, NEW ALBANY, IN 47150
PHONE: 812-944-6733 FAX: 812-948-5047
e-Mail: info@SAMTEC.com code 55322

MATERIAL: DO NOT SCALE DRAWING SHEET SCALE: 6:1
INSULATOR: LCP, COLOR: BLACK
CONTACT: COPPER ALLOY

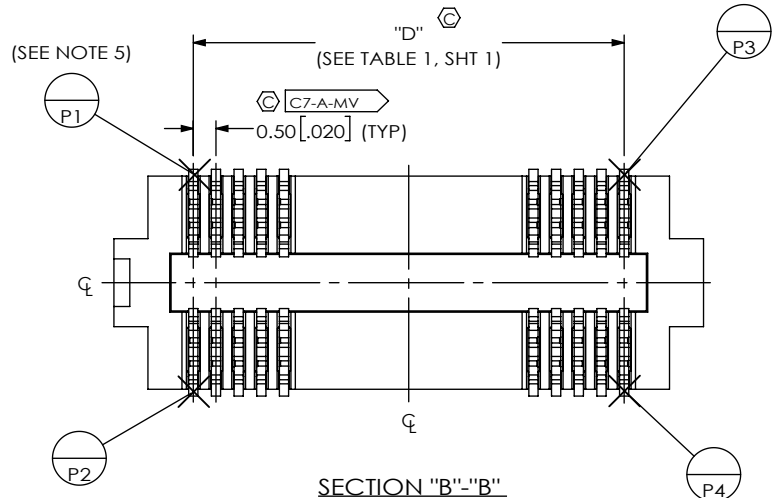
DESCRIPTION: TLH TERMINAL ASSEMBLY

DWG. NO. TLH-XXX-X.XX-X-D-X-X

BY: JERRY SU 10/25/2014 SHEET 1 OF 3



SECTION "A"-"A"
SCALE 15:1



SECTION "B"-"B"
SCALE 6:1

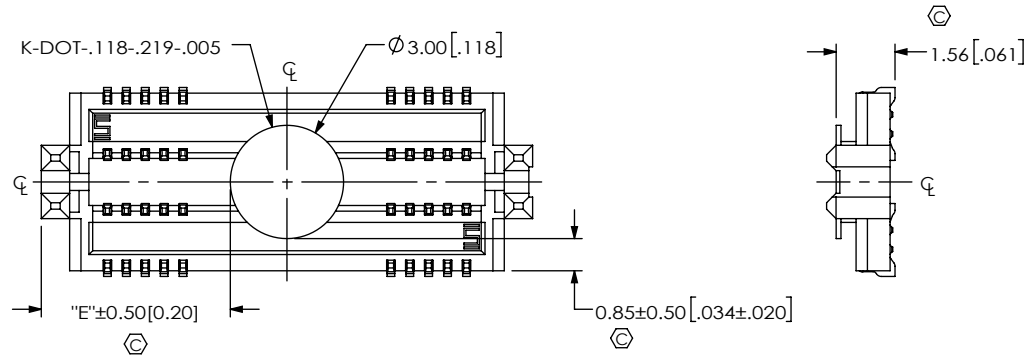


FIG 2
TLH-020-0.50-X-D-K SHOWN
(DIFFERENT AS SHOWN, OTHERWISE SAME AS FIG 1)
(SOME CENTER FEATURES NOT SHOWN FOR CLARITY)

<p>PROPRIETARY NOTE</p> <p>THIS DOCUMENT CONTAINS CONFIDENTIAL AND PROPRIETARY INFORMATION AND ALL DESIGN, MANUFACTURING, REPRODUCTION, USE, PATENT RIGHTS AND SALES RIGHTS ARE EXPRESSLY RESERVED BY SAMTEC, INC. THIS DOCUMENT SHALL NOT BE DISCLOSED, IN WHOLE OR PART, TO ANY UNAUTHORIZED PERSON OR ENTITY NOR REPRODUCED, TRANSFERRED OR INCORPORATED IN ANY OTHER PROJECT IN ANY MANNER WITHOUT THE EXPRESS WRITTEN CONSENT OF SAMTEC, INC.</p> <p>DO NOT SCALE DRAWING</p> <p>SHEET SCALE: 2:1</p>		
	<p>520 PARK EAST BLVD, NEW ALBANY, IN 47150 PHONE: 812-944-6733 FAX: 812-948-5047 e-Mail info@SAMTEC.com code 55322</p>	
	<p>DESCRIPTION: TLH TERMINAL ASSEMBLY</p>	
	<p>DWG. NO. TLH-XXX-X.XX-X-D-X-X</p>	
<p>BY: JERRY SU 10/25/2014</p>		<p>SHEET 2 OF 3</p>

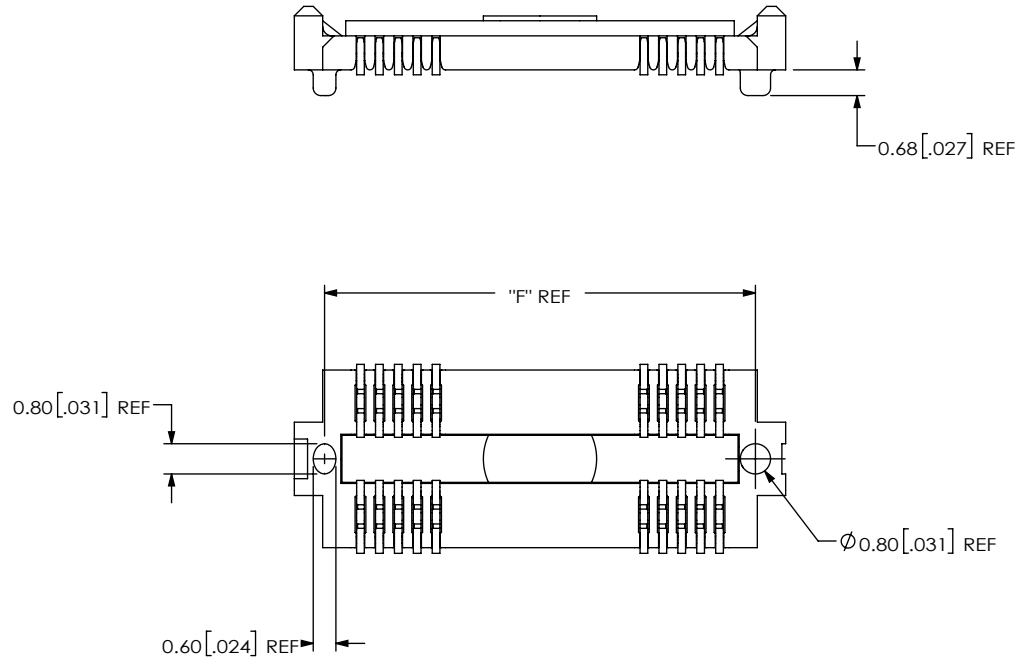



FIG 3: ALIGNMENT PIN DETAIL
 TLH-020-0.50-X-D-A-K SHOWN
 (SOME CENTER FEATURES NOT SHOWN FOR CLARITY)

<p>PROPRIETARY NOTE</p> <p>THIS DOCUMENT CONTAINS CONFIDENTIAL AND PROPRIETARY INFORMATION AND ALL DESIGN, MANUFACTURING, REPRODUCTION, USE, PATENT RIGHTS AND SALES RIGHTS ARE EXPRESSLY RESERVED BY SAMTEC, INC. THIS DOCUMENT SHALL NOT BE DISCLOSED, IN WHOLE OR PART, TO ANY UNAUTHORIZED PERSON OR ENTITY NOR REPRODUCED, TRANSFERRED OR INCORPORATED IN ANY OTHER PROJECT IN ANY MANNER WITHOUT THE EXPRESS WRITTEN CONSENT OF SAMTEC, INC.</p>	 <p>520 PARK EAST BLVD, NEW ALBANY, IN 47150 PHONE: 812-944-6733 FAX: 812-948-5047 e-Mail: info@SAMTEC.com code 55322</p>
<p>DO NOT SCALE DRAWING</p> <p>SHEET SCALE: 5:1</p>	<p>DESCRIPTION: TLH TERMINAL ASSEMBLY</p> <p>DWG. NO. TLH-XXX-X.XX-X-D-X-X</p> <p>BY: JERRY SU 10/25/2014 SHEET 3 OF 3</p>