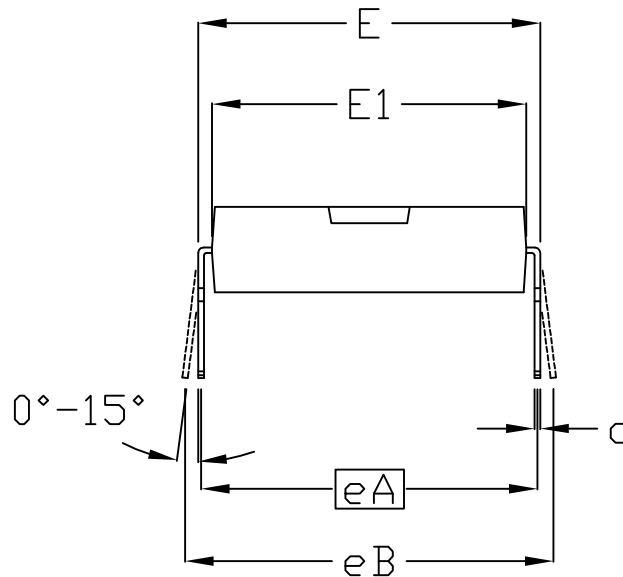
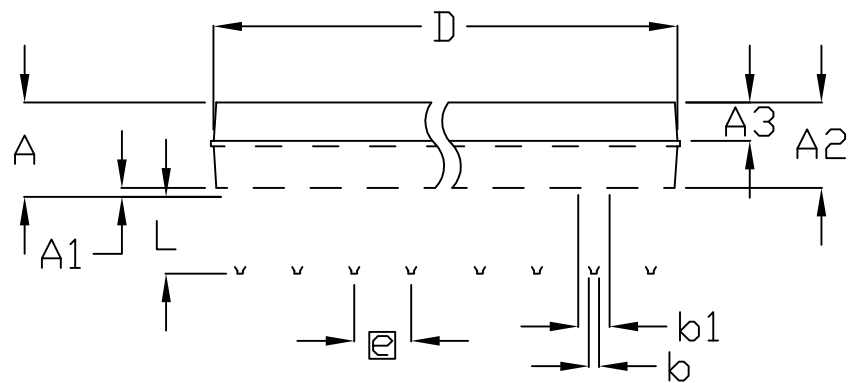


TOP VIEW



END VIEW



SIDE VIEW

| DIM | INCHES | | MILLIMETERS | |
|-----|-----------|-------|-------------|-------|
| | MIN | MAX | MIN | MAX |
| A | - | 0.200 | - | 5.08 |
| A1 | 0.015 | - | 0.39 | - |
| A2 | 0.125 | 0.175 | 3.18 | 4.45 |
| A3 | 0.055 | 0.080 | 1.40 | 2.03 |
| b | 0.016 | 0.020 | 0.41 | 0.51 |
| b1 | 0.045 | 0.065 | 1.14 | 1.65 |
| c | 0.008 | 0.012 | 0.21 | 0.30 |
| D1 | 0.025 | 0.055 | 0.63 | 1.40 |
| E | 0.600 | 0.625 | 15.24 | 15.87 |
| E1 | 0.525 | 0.575 | 13.34 | 14.61 |
| e | 0.100 BSC | | 2.54 BSC | |
| eA | 0.600 BSC | | 15.24 BSC | |
| eB | - | 0.700 | - | 17.78 |
| L | 0.120 | 0.150 | 3.05 | 3.81 |

VARIATIONS:

| DIM | INCHES | | MILLIMETERS | | N | MS011 | PKG CODE |
|-----|--------|-------|-------------|-------|----|-------|--|
| | MIN | MAX | MIN | MAX | | | |
| D | 1.230 | 1.270 | 31.24 | 32.26 | 24 | AA | P24-3, P24-4, P24-6, P24-7, P24M-1, P24M-2 |
| D | 1.430 | 1.470 | 36.32 | 37.34 | 28 | AB | P28-1, P28-2, P28-3, P28-5, P28-7, P28M-1, P28M-8 |
| D | 2.025 | 2.075 | 51.44 | 52.71 | 40 | AC | P40-1, P40-2, P40-4, P40M-1, P40M-2, P40R-1 |

NOTES:

1. DIMENSIONS ARE IN MILLIMETERS UNLESS OTHERWISE SPECIFIED.
2. D&E DO NOT INCLUDE MOLD FLASH.
3. MOLD FLASH OR PROTRUSIONS NOT TO EXCEED 0.15mm (.006").
4. MEETS JEDEC MS011.
5. N = NUMBER OF PINS
6. MATERIAL MUST COMPLY WITH BANNED AND RESTRICTED SUBSTANCES SPEC # 10-0131.
7. ALL DIMENSIONS APPLY TO BOTH LEADED (-) AND PbfREE (+) PKG. CODES.

-DRAWING NOT TO SCALE-



TITLE:
PACKAGE OUTLINE,
PDIP .600"

APPROVAL
VIRESH PATEL
04/11/11

DOCUMENT CONTROL NO.
21-0044

REV. 1/1
D