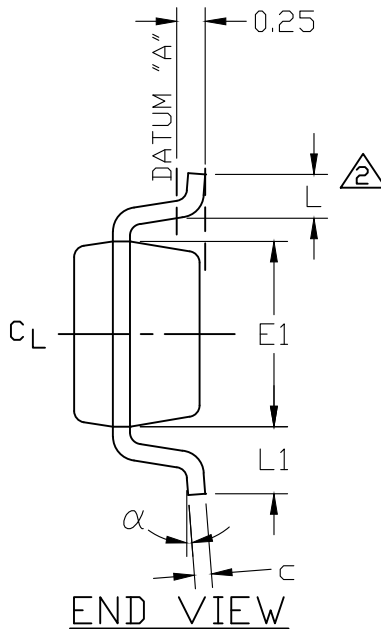
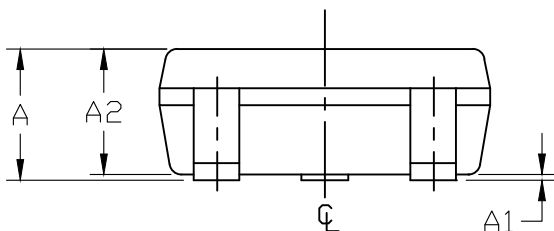


TOP VIEW



END VIEW

| SYMBOL   | MIN       | NOM   | MAX  |
|----------|-----------|-------|------|
| A        | 0.90      | 1.25  | 1.45 |
| A1       | 0.00      | 0.05  | 0.15 |
| A2       | 0.90      | 1.10  | 1.30 |
| b        | 0.35      | 0.40  | 0.50 |
| c        | 0.08      | 0.15  | 0.20 |
| D        | 2.80      | 2.90  | 3.00 |
| E        | 2.60      | 2.80  | 3.00 |
| E1       | 1.50      | 1.625 | 1.75 |
| L        | 0.35      | 0.45  | 0.60 |
| L1       | 0.60 REF  |       |      |
| e        | 0.95 BSC. |       |      |
| e1       | 1.90 BSC. |       |      |
| $\alpha$ | 0°        | 2.5°  | 8°   |



SIDE VIEW

NOTES:

1. ALL DIMENSIONS ARE IN MILLIMETERS UNLESS OTHERWISE SPECIFIED.
2. FOOT LENGTH MEASURED AT INTERCEPT POINT BETWEEN DATUM A & LEAD SURFACE.
3. PACKAGE OUTLINE EXCLUSIVE OF MOLD FLASH & METAL BURR. MOLD FLASH, PROTRUSION OR METAL BURR SHOULD NOT EXCEED 0.25 MM.
4. MEETS JEDEC MO178, VARIATION AA.
5. LEADS TO BE COPLANAR WITHIN 0.10 mm.
6. SOLDER THICKNESS MEASURED AT FLAT SECTION OF LEAD BETWEEN 0.08mm AND 0.15mm FROM LEAD TIP.
7. MATERIAL MUST BE COMPLIANT WITH MAXIM SPECIFICATION 10-0131 FOR SUBSTANCE CONTENT, MUST BE EU ROHS COMPLIANT WITHOUT EXEMPTION AND PB-FREE.
8. ALL DIMENSIONS APPLY TO BOTH LEADED (-) AND LEAD FREE (+) PACKAGE CODES.
9. PKG CODES: U5-1, U5-1A, U5-2, U5-2A

-DRAWING NOT TO SCALE-



TITLE:  
PACKAGE OUTLINE,  
5L SOT23

APPROVAL

DOCUMENT CONTROL NO.  
21-0057

REV. J 1/1