

DESIGNED & DIMENSIONED
IN MILLIMETERS [INCHES]

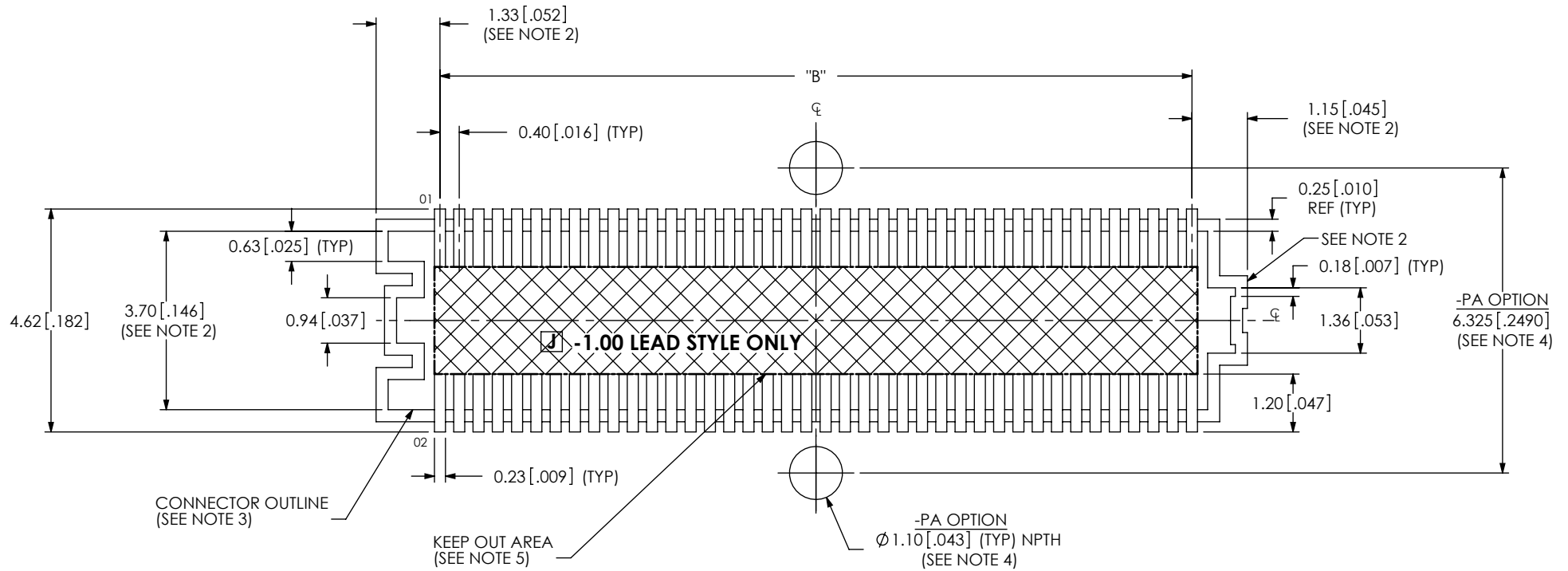


FIG 1
ST4-XX-X.XX-X-D

TABLE 1	
No. OF POS	"B"
-10	3.60 [.142]
-15	5.60 [.220]
-20	7.60 [.299]
-30	11.60 [.457]
-40	15.60 [.614]
-50	19.60 [.772]

NOTES:

1. ALL DIMENSIONS ARE SYMMETRIC ABOUT THE CENTERLINE, EXCEPT AS SHOWN.
2. CONNECTOR ENVELOPE DIMENSIONS. OTHER COMPONENTS PLACED ON PCB SHALL AVOID THIS ZONE.
3. RECOMMENDED SILKSCREEN FOR PROPER CONNECTOR ORIENTATION TO PCB.
4. -PA OPTION NOT AVAILABLE ON -15 POSITIONS.
5. DUE TO HEIGHT RESTRICTIONS, VIAS ARE NOT RECOMMENDED UNDERNEATH THE PART IN THIS AREA.

PROPRIETARY NOTE

THIS DOCUMENT CONTAINS INFORMATION CONFIDENTIAL AND PROPRIETARY TO SAMTEC, INC. AND SHALL NOT BE REPRODUCED OR TRANSFERRED TO OTHER DOCUMENTS OR DISCLOSED TO OTHERS OR USED FOR ANY PURPOSE OTHER THAN THAT WHICH IT WAS OBTAINED WITHOUT THE EXPRESSED WRITTEN CONSENT OF SAMTEC, INC.

samtec

520 PARK EAST BLVD, NEW ALBANY, IN 47150
PHONE: 812-944-6733 FAX: 812-948-5047
e-Mail: info@SAMTEC.com code: 55322

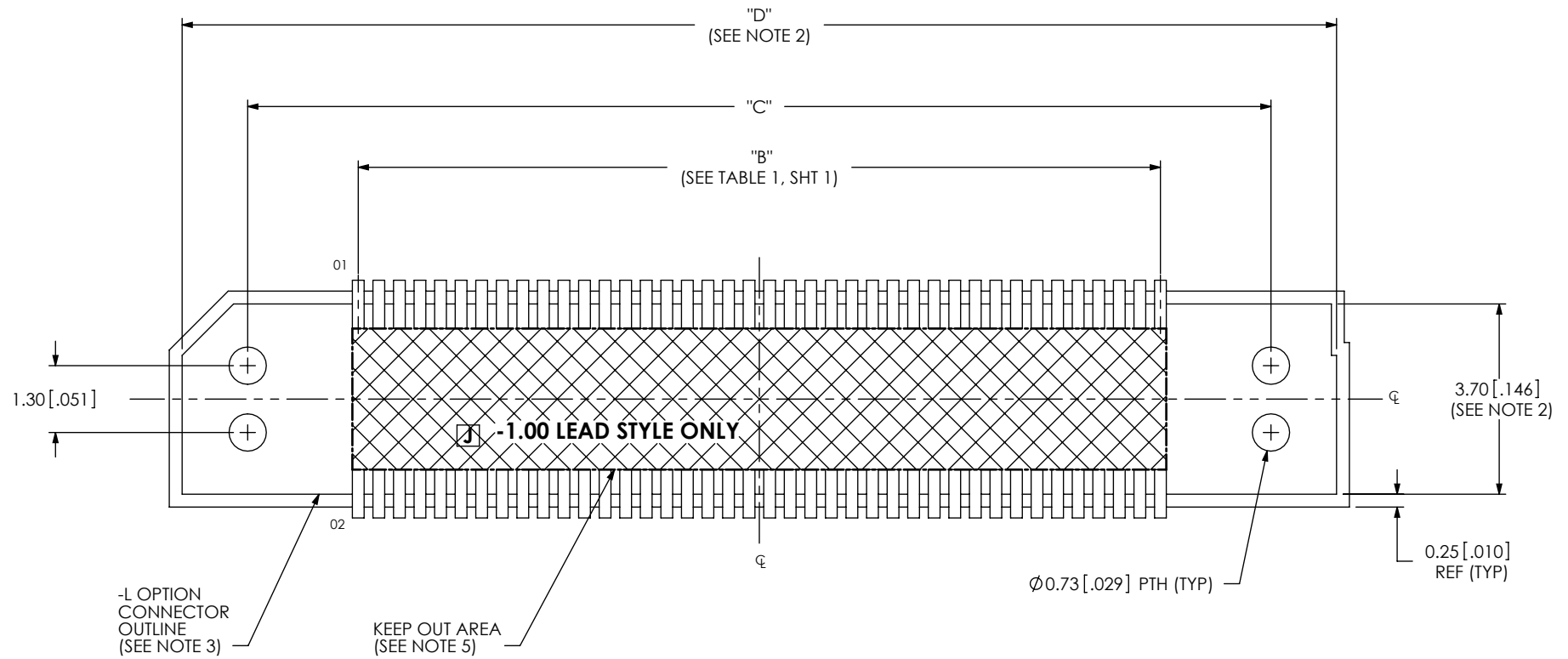


FIG 2
ST4-XX-X.XX-X-D-L

ALL DIMENSIONS ARE SYMMETRIC ABOUT THE CENTERLINE.

TABLE 2

No. OF POS	"C"	"D"
-10	7.90 [.311]	10.46 [.412]
-15	9.90 [.390]	12.46 [.491]
-20	11.90 [.469]	14.46 [.569]
-30	15.90 [.626]	18.46 [.727]
-40	19.90 [.783]	22.46 [.884]
-50	23.90 [.941]	26.46 [1.042]

PROPRIETARY NOTE

THIS DOCUMENT CONTAINS INFORMATION CONFIDENTIAL AND PROPRIETARY TO SAMTEC, INC. AND SHALL NOT BE REPRODUCED OR TRANSFERRED TO OTHER DOCUMENTS OR DISCLOSED TO OTHERS OR USED FOR ANY PURPOSE OTHER THAN THAT WHICH IT WAS OBTAINED WITHOUT THE EXPRESSED WRITTEN CONSENT OF SAMTEC, INC.



520 PARK EAST BLVD, NEW ALBANY, IN 47150
PHONE: 812-944-6733 FAX: 812-948-5047
e-Mail: info@SAMTEC.com code: 55322

NOTE:
STENCIL TO BE 0.127 [.0050] THICK AND ELECTROFORMED STENCIL IS RECOMMENDED.

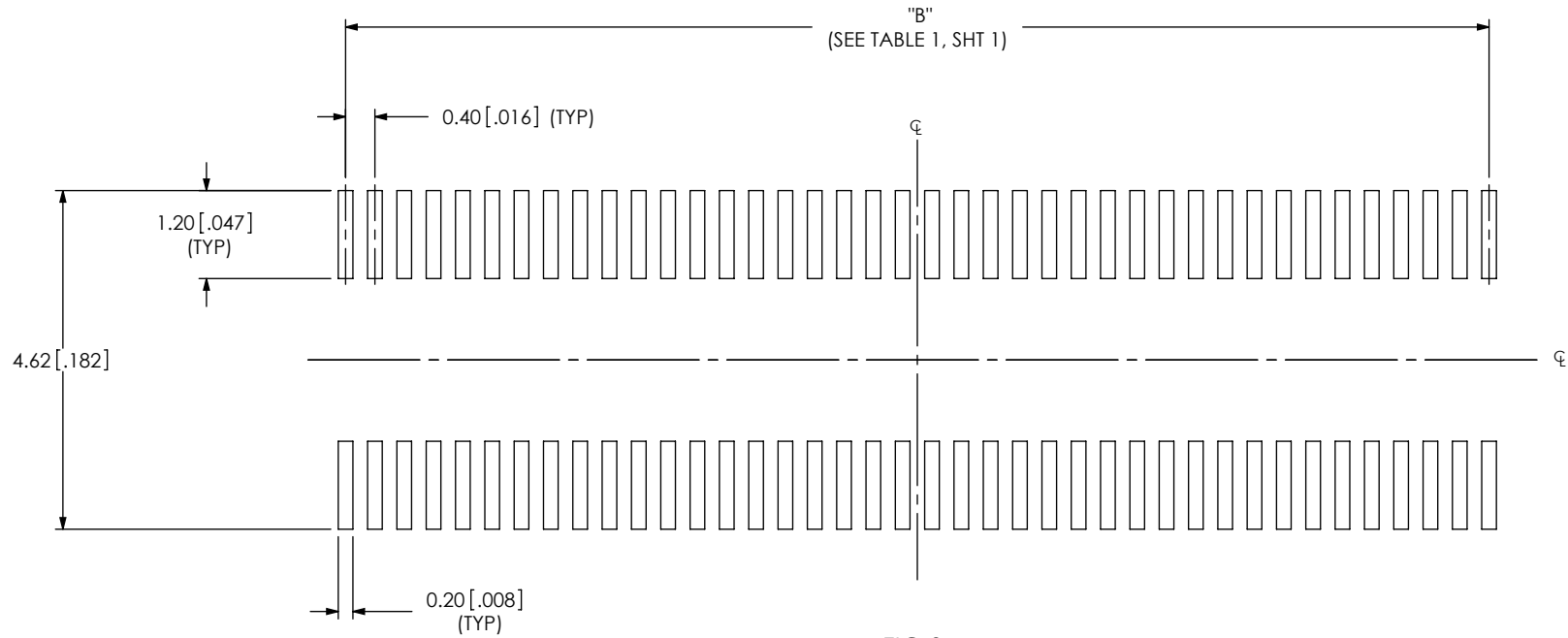


FIG 3
ST4-XX-X.XX-X-D

ALL DIMENSIONS ARE SYMMETRIC ABOUT THE CENTERLINE.

PROPRIETARY NOTE

THIS DOCUMENT CONTAINS INFORMATION CONFIDENTIAL AND PROPRIETARY TO SAMTEC, INC. AND SHALL NOT BE REPRODUCED OR TRANSFERRED TO OTHER DOCUMENTS OR DISCLOSED TO OTHERS OR USED FOR ANY PURPOSE OTHER THAN THAT WHICH IT WAS OBTAINED WITHOUT THE EXPRESSED WRITTEN CONSENT OF SAMTEC, INC.



520 PARK EAST BLVD, NEW ALBANY, IN 47150
PHONE: 812-944-6733 FAX: 812-948-5047
e-Mail: info@SAMTEC.com code: 55322

