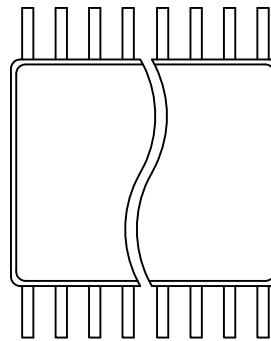
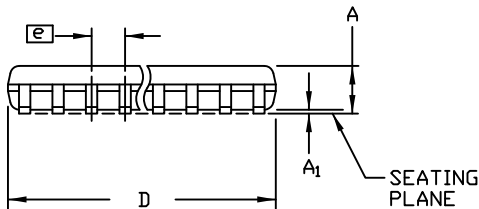


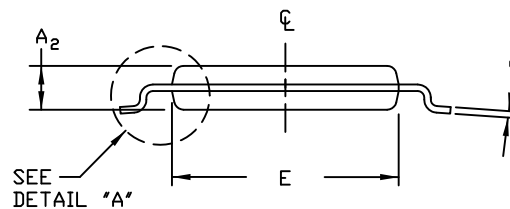
TOP VIEW



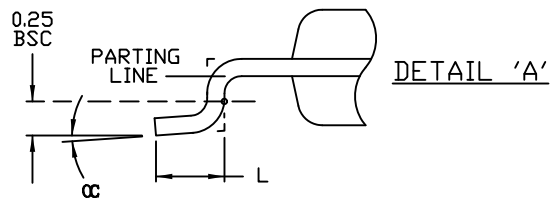
BOTTOM VIEW



SIDE VIEW



END VIEW



DETAIL 'A'

SYMBOL	COMMON DIMENSIONS			
	MILLIMETERS		INCHES	
	MIN.	MAX.	MIN.	MAX.
A	—	1.10	—	.043
A1	0.05	0.15	.002	.006
A2	0.85	0.95	.033	.037
b	0.17	0.27	.0067	.0106
b1	0.17	0.23	.0067	.0091
c	0.090	0.200	.0035	.0079
c1	0.090	0.135	.0035	.0053
D	9.60	9.80	.3780	.3858
E	4.30	4.50	.169	.177
e	0.50 BSC		0.0197 BSC	
H	6.30	6.50	.248	.256
L	0.50	0.70	.020	.028
α	0°	8°	0°	8°
PKGCODES: U38-1; U38-2; U38-3				



LEAD TIP DETAIL

NOTES:

1. DIMENSIONS D AND E DO NOT INCLUDE FLASH.
2. MOLD FLASH OR PROTRUSIONS NOT TO EXCEED .15 mm PER SIDE.
3. CONTROLLING DIMENSION: MILLIMETER.
4. MEETS JEDEC OUTLINE MO-153 VARIATION BD-1.
5. LEAD TO BE COPLANAR WITHIN 0.10mm.
6. ALL DIMENSIONS APPLY TO BOTH LEADED (-) AND PbFREE (+) PKG. CODES.

-DRAWING NOT TO SCALE-



TITLE: PACKAGE OUTLINE 38L TSSOP, 4.40mm BODY, 0.5mm PITCH			
APPROVAL DAVID YOUM 4/29/10	DOCUMENT CONTROL NO. 21-0081	REV. D	1/1