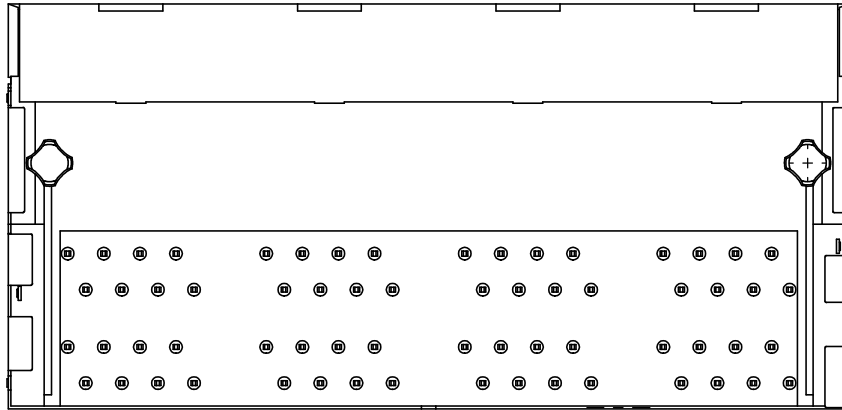
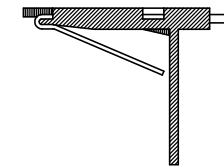


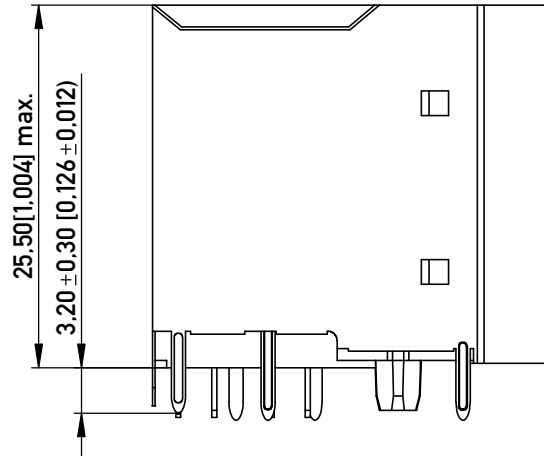
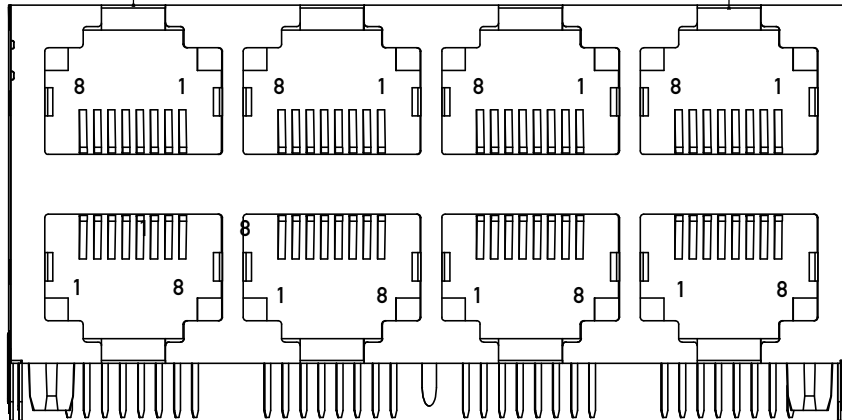
[2.100±0.005]



IMPROVED CONTACT DESIGN
(PRE BEND)



3 x 13.97 [.550] = 41.91 [1.650]



Contact material	Standard description	C5210 (acc.JIS)
Contact finish, mating zone	Thickness of plating	30 µm Au over 50 µm Ni
Contact finish termination zone	Thickness of plating	80 µm matte Sn over 50 µm Ni
Shell/shield material	Standard description	SUS301 (acc.JIS)
Plating shield / shielding pin		50 µm Ni / 80 µm Sn

Insertion/withdrawal force	IEC 603-7	max. 20 N
Mechanical operations	IEC 512-5, 9a	min. 1.000
Effectiveness of connector coupling device	IEC 512-8, 15f	50 N

Electrical properties

Creepage / clearance distances

a) Contact - contact	IEC 807-3	0.52 mm
b) Contact - shell	IEC 807-3	min 1.0 mm

Voltage proof (Dielectric Withstand Voltage)

a) Contact - contact	IEC 512-2, 4a	min. 1.000 V AC/DC
b) Contact - shell/testpanel	IEC 512-2, 4a	min. 1.500 V AC/DC
Current carrying capacity	IEC 512-3, 5b	1.5 A @ 25° C
Contact resistance	IEC 512-2, 2a	max. 30 mOhm
Insulation resistance	IEC 512-2, 3a	min. 500 MOhm

Environmental properties

Operation temperature	0 - 70° C
-----------------------	-----------

Assembly process

Packaging	Tray
Solder temperature	235°C at 3-5s
Suitable assembly process	wave

Approvals

UL insulation body	UL 94	V0
UL File No.		E145613
RoHS compliant		Yes

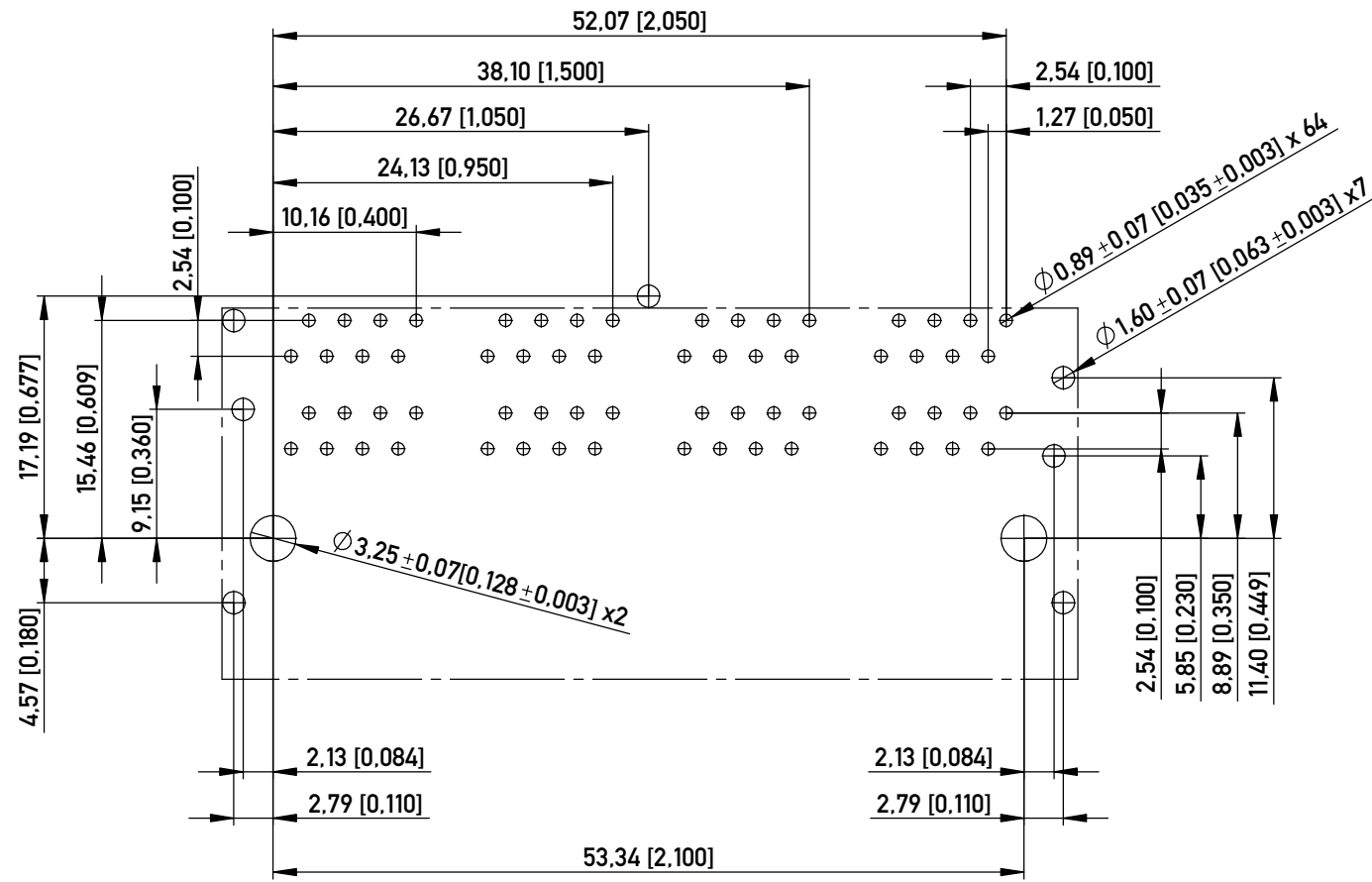
- NOTE 1: ONE REAR GROUND PIN CENTERED
- NOTE 2: C - UL APPROVED E145613 AND MEETS FCC REQUIREMENTS
- NOTE 3: 3 SIDE GROUND PINS EACH SIDE; STAGGERED (S1)
- NOTE 4: RoHS COMPLIANT

QUALITY INSPECTION / WE-PRÜFUNG:

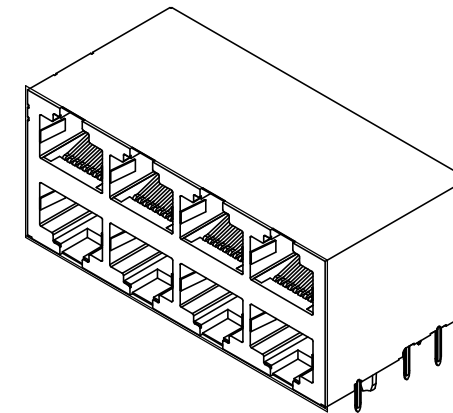
- Gauging procedure / Lehrenprüfung
- mating zone / Steckgesicht
- termination zone / Anschlussseite
- Contact finish / Oberflächenbeschaffenheit
- mating zone / Steckkontakte
- termination zone / Anschlusspins

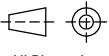

Information: MAXCONN P.N.: MJDS-LG5-88-8-30	Tolerances	 All Dimensions in mm [in]	Scale	2:1
	All rights reserved. Only for Information. To ensure that this is the latest version of this drawing, please contact one of the ERNI companies before using.		Designation MOD JACK - MJD 8P8C, 2X4, CATEGORY 5	
Copyright by ERNI Production GmbH & Co. KG Proprietary notice pursuant to ISO 16046 to be observed.	Subject to modification without prior notice. Drawing will not be updated.		133044	
	www.ERNI.com	Class MJ		I (1/2) A3
c	05.08.2016			
Index	Date			

RECOMMENDED PCB LAYOUT (COMPONENT SIDE VIEW)
 EMPFOHLENES LEITERPLATTEN-LAYOUT (BESTUECKUNGSSEITE)
 TOL. ±0.05 [0.002] UNLESS NOTED



RECOMMENDED PANEL CUTOUT
 EMPFOHLENER FRONTPLATTEN-AUSSCHNITT



Information: All rights reserved. Only for Information. To ensure that this is the latest version of this drawing, please contact one of the ERNI companies before using.	Tolerances  All Dimensions in mm [in]	Scale	2:1
		Designation MOD JACK - MJD 8P8C, 2x4, CATEGORY 5	
c Index	05.08.2016 Date	 www.ERNI.com	133044 I(2/2) A3
Class		MJ	

Copyright by ERNI Production GmbH & Co. KG
 Proprietary notice pursuant to ISO 16016 to be observed.