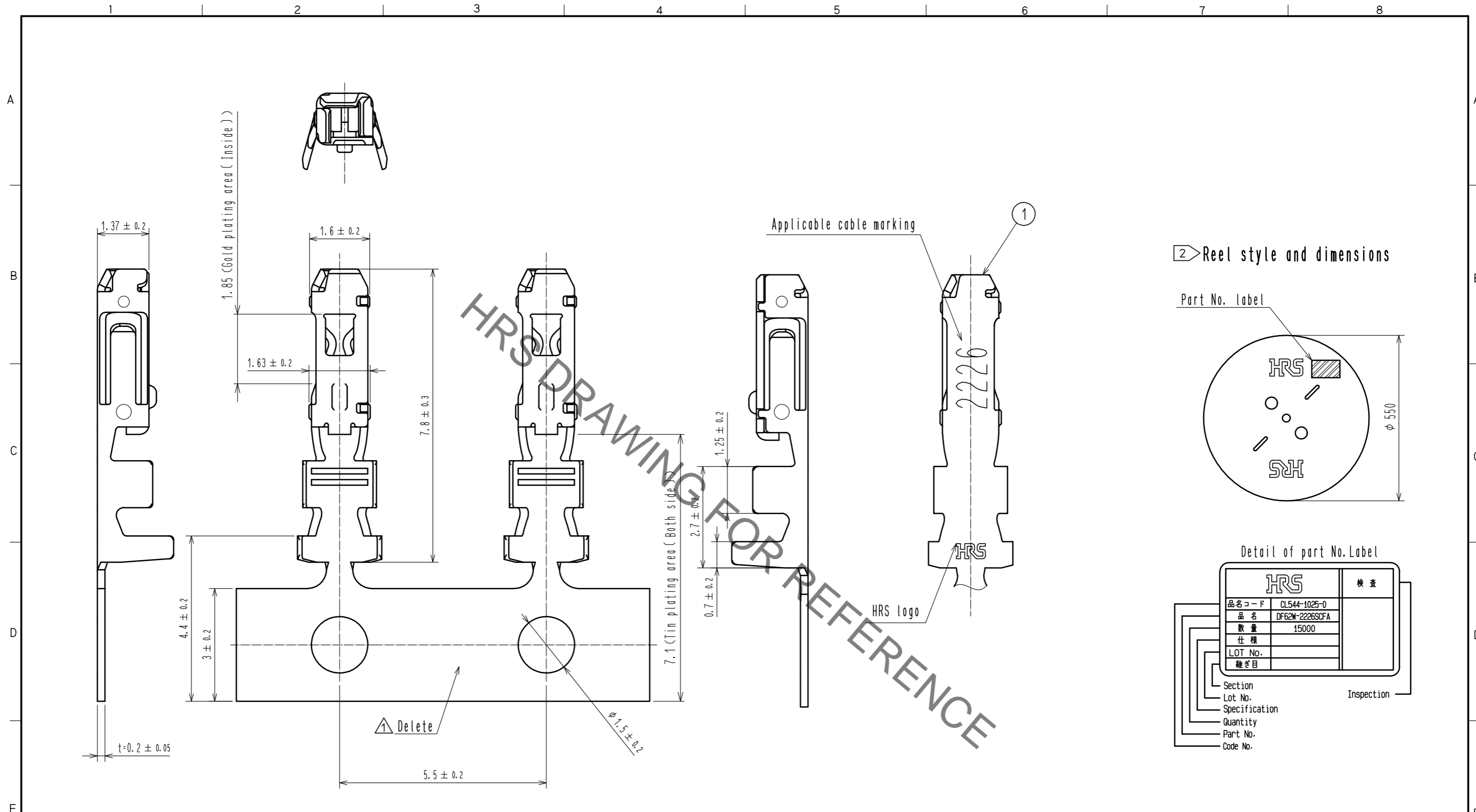
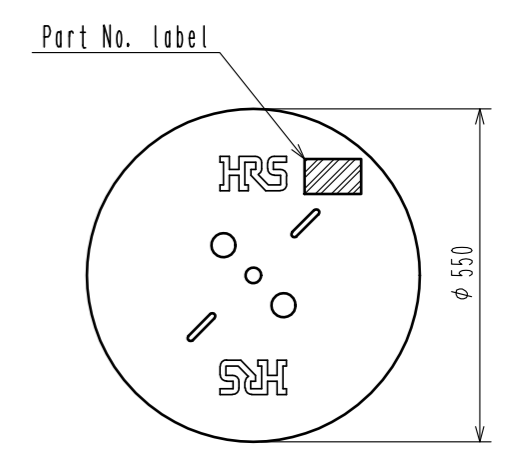


Sep.1.2020 Copyright 2020 HIROSE ELECTRIC CO., LTD. All Rights Reserved.
In case of consideration for using Automotive equipment / device which demand high reliability, kindly contact our sales window correspondents.



2 Reel style and dimensions



Detail of part No. Label

HRS		検査
品名コード	CL544-1025-0	検査
品名	DF62W-2226SCFA	
数量	15000	
仕様		
LOT No.		
継ぎ目		
Section		
Lot No.		
Specification		
Quantity		
Part No.		
Code No.		

Notes

- 1RL : 15000 contacts.
- 2 Style of reel and box are shown in figure.
- Up to 5 reels are packed up in one box.
- Please be sure to check the form of crimping using a cable when you adjust applicator.
- Always refer to the manuals below for operation of this product.
For Cable assembly / Cable assembly procedure ETAD-H0760
For Mating/Unmating / Operation manual ETAD-H0761

NO.	MATERIAL	FINISH . REMARKS	NO.	MATERIAL	FINISH . REMARKS	
1	Phosphor bronze	Contact area:Gold plating 0.2μm min Carrier/Barrel area:Tin plating 1μm min Others : Nickel plating 0.5 μm min				
UNITS	SCALE	COUNT	DESCRIPTION OF REVISIONS	DESIGNED	CHECKED	DATE
mm	10:1	1	DIS-H-00001435	YK.YAMAGUCHI	TS.FUKUSHIMA	16.03.04
APPROVED : KI. AKIYAMA		15.12.14	DRAWING NO. EDC-364715-00-00			
CHECKED : TS. FUKUSHIMA		15.12.14	PART NO. DF62W-2226SCFA			
DESIGNED : YK. YAMAGUCHI		15.12.11	CODE NO. CL544-1025-0-00			
DRAWN : MI. SAKIMURA		15.12.11	1/1			