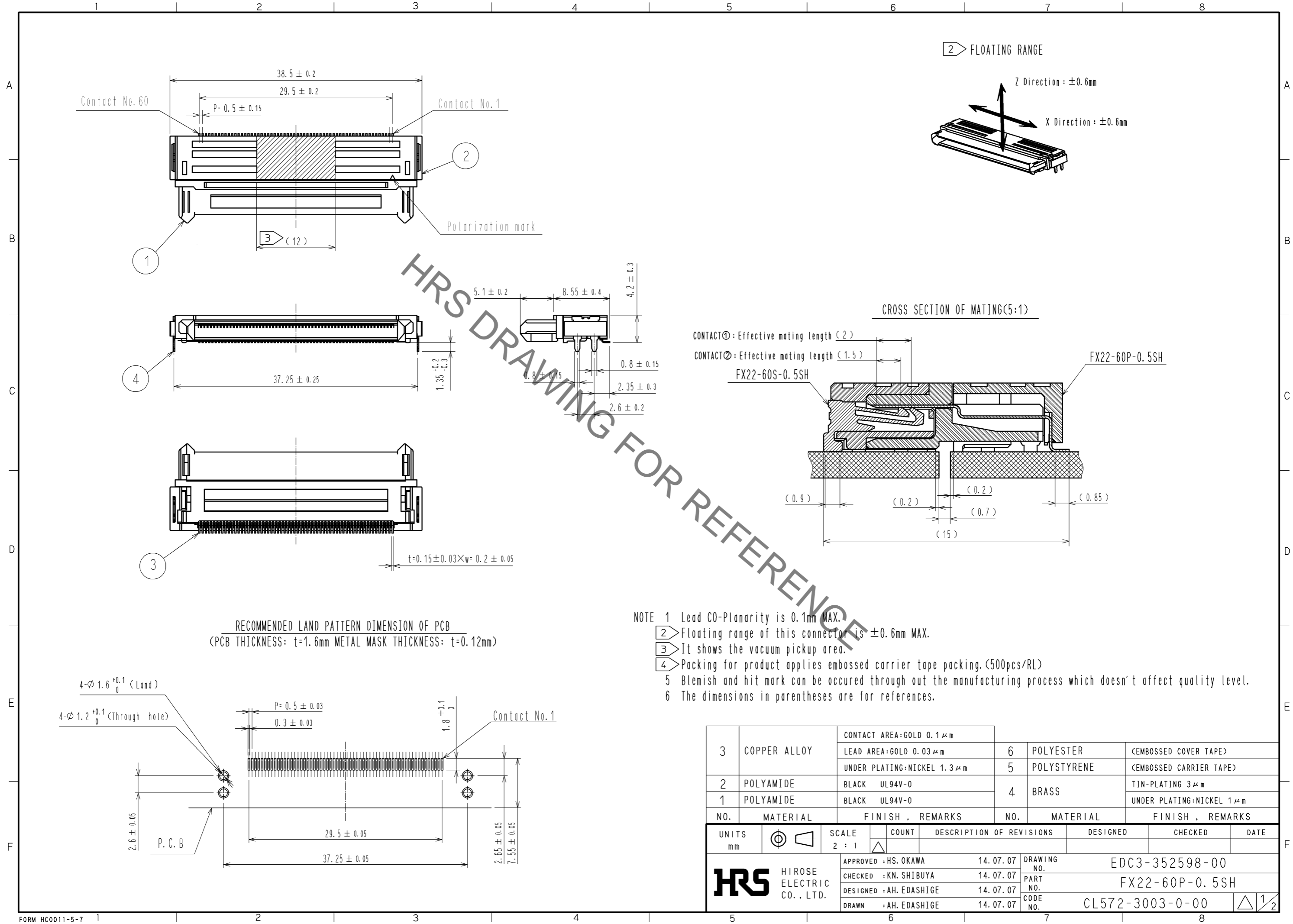


Sep.1.2020 Copyright 2020 HIROSE ELECTRIC CO., LTD. All Rights Reserved.  
In case of consideration for using Automotive equipment / device which demand high reliability, kindly contact our sales window correspondents.



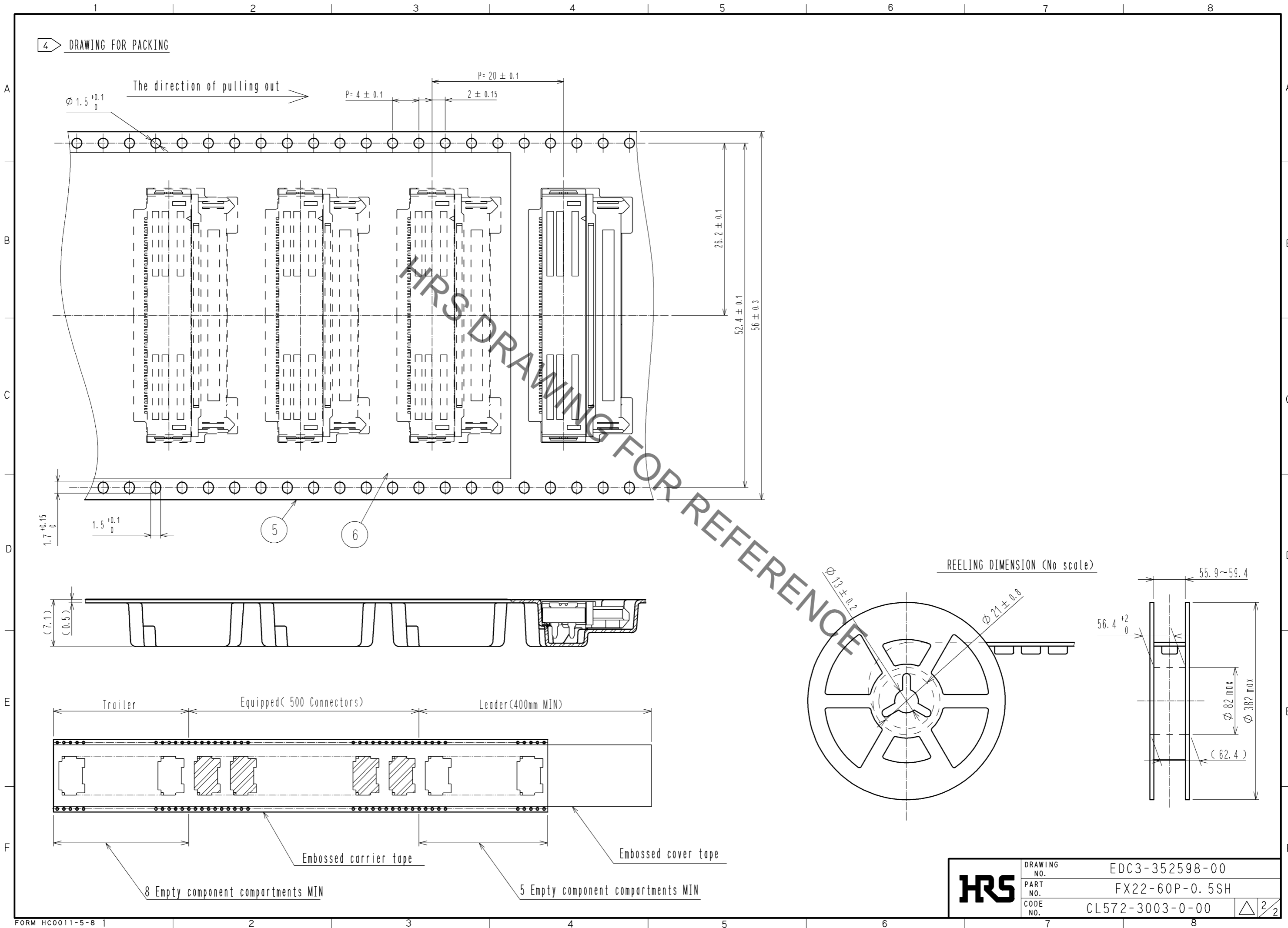
NO.	MATERIAL	FINISH	REMARKS	NO.	MATERIAL	FINISH	REMARKS
3	COPPER ALLOY		CONTACT AREA: GOLD 0.1 $\mu\text{m}$ LEAD AREA: GOLD 0.03 $\mu\text{m}$ UNDER PLATING: NICKEL 1.3 $\mu\text{m}$	6	POLYESTER		(EMBOSSED COVER TAPE)
2	POLYAMIDE	BLACK	UL94V-0	5	POLYSTYRENE		(EMBOSSED CARRIER TAPE)
1	POLYAMIDE	BLACK	UL94V-0	4	BRASS		TIN-PLATING 3 $\mu\text{m}$ UNDER PLATING: NICKEL 1 $\mu\text{m}$

UNITS	SCALE	COUNT	DESCRIPTION OF REVISIONS	DESIGNED	CHECKED	DATE
mm	2 : 1	△				
APPROVED : HS. OKAWA			14.07.07	DRAWING NO. EDC3-352598-00		
CHECKED : KN. SHIBUYA			14.07.07	PART NO. FX22-60P-0.5SH		
DESIGNED : AH. EDASHIGE			14.07.07	CODE NO. CL572-3003-0-00		
DRAWN : AH. EDASHIGE			14.07.07	△ 1/2		

Sep.1.2020 Copyright 2020 HIROSE ELECTRIC CO., LTD. All Rights Reserved.  
 In case of consideration for using Automotive equipment / device which demand high reliability, kindly contact our sales window correspondents.

4 DRAWING FOR PACKING



<b>HRS</b>	DRAWING NO.	EDC3-352598-00
	PART NO.	FX22-60P-0.5SH
	CODE NO.	CL572-3003-0-00
		$\triangle$ 2/2