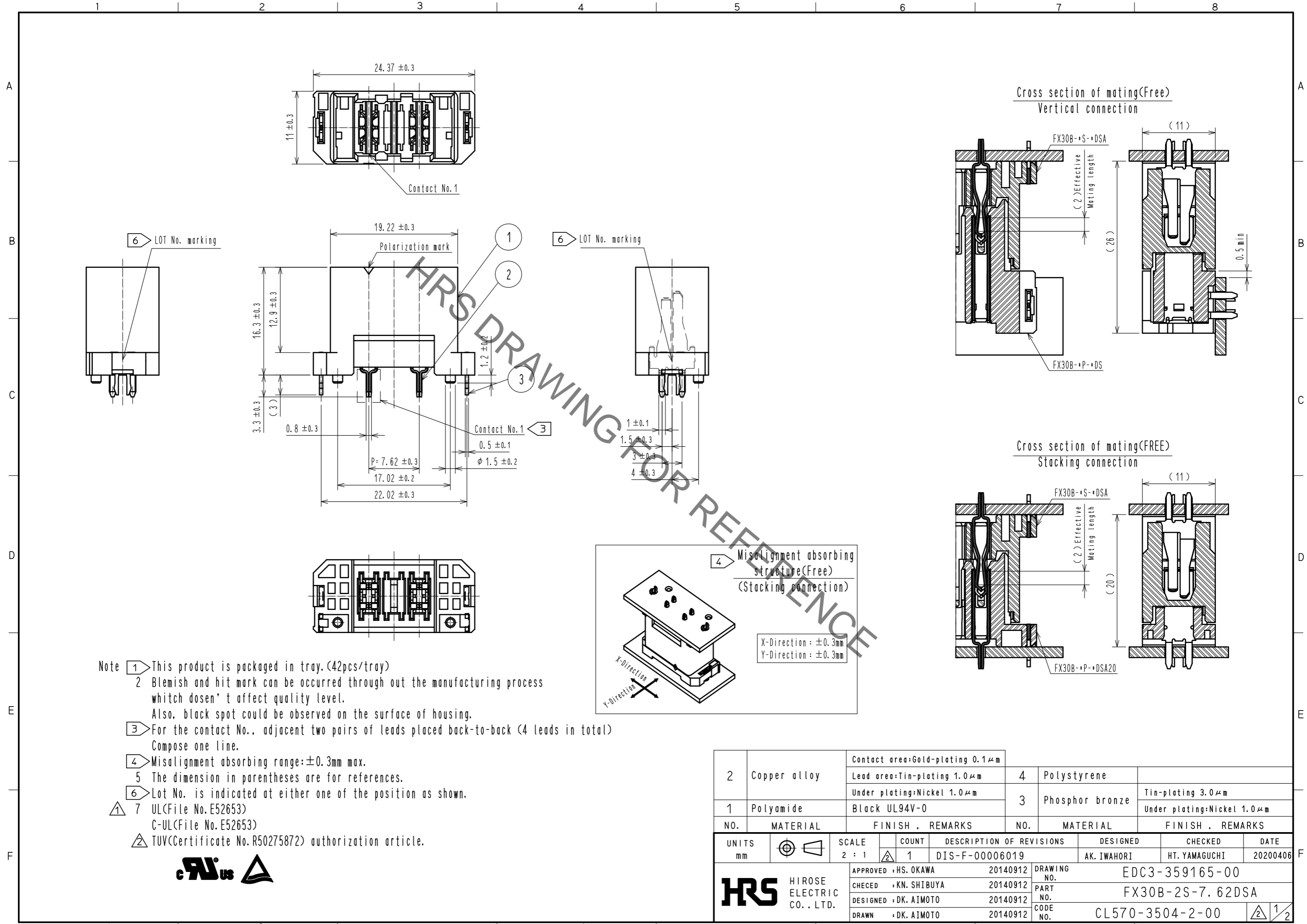


Sep.1.2020 Copyright 2020 HIROSE ELECTRIC CO., LTD. All Rights Reserved.  
In case of consideration for using Automotive equipment / device which demand high reliability, kindly contact our sales window correspondents.



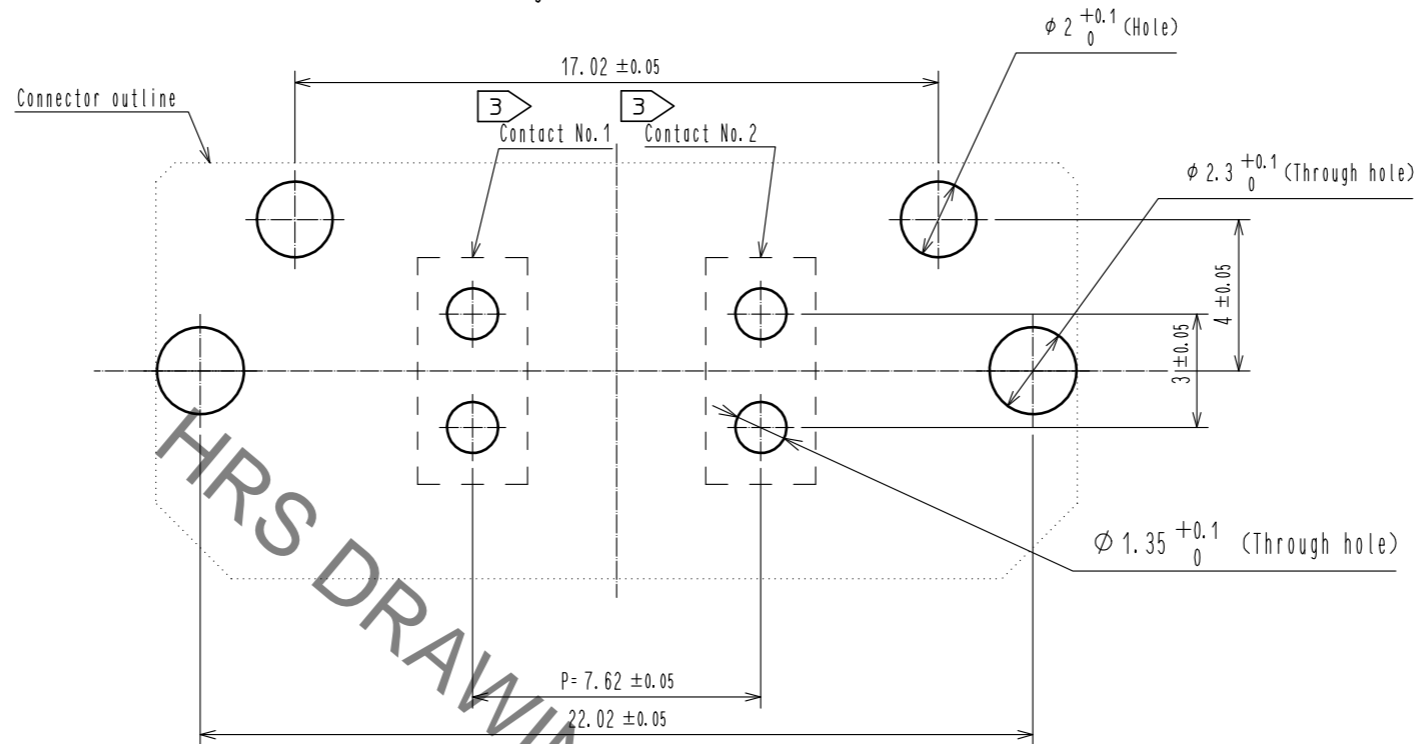
- Note
- ① This product is packaged in tray. (42pcs/tray)
  - ② Blemish and hit mark can be occurred through out the manufacturing process which doesn't affect quality level. Also, black spot could be observed on the surface of housing.
  - ③ For the contact No., adjacent two pairs of leads placed back-to-back (4 leads in total) Compose one line.
  - ④ Misalignment absorbing range:  $\pm 0.3$ mm max.
  - ⑤ The dimension in parentheses are for references.
  - ⑥ Lot No. is indicated at either one of the position as shown.
  - ⚠ 7 UL (File No. E52653)  
C-UL (File No. E52653)
  - ⚠ TUV (Certificate No. R50275872) authorization article.



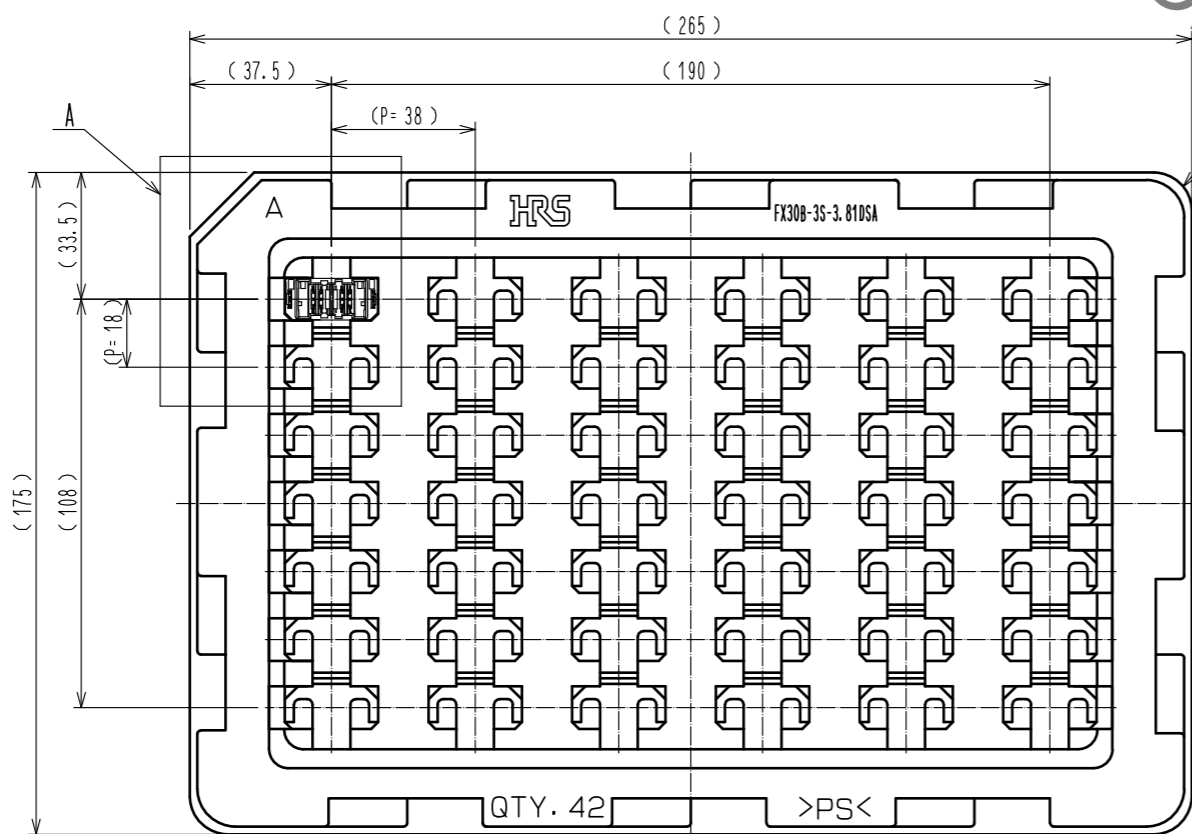
2	Copper alloy	Contact area: Gold-plating $0.1 \mu\text{m}$	4	Polystyrene			
		Lead area: Tin-plating $1.0 \mu\text{m}$					
		Under plating: Nickel $1.0 \mu\text{m}$	3	Phosphor bronze	Tin-plating $3.0 \mu\text{m}$		
1	Polyamide	Black UL94V-0			Under plating: Nickel $1.0 \mu\text{m}$		
NO.	MATERIAL	FINISH . REMARKS	NO.	MATERIAL	FINISH . REMARKS		
UNITS		SCALE	COUNT	DESCRIPTION OF REVISIONS	DESIGNED	CHECKED	DATE
mm		2 : 1	1	DIS-F-00006019	AK. IWAHORI	HT. YAMAGUCHI	20200406
<b>HRS</b> HIROSE ELECTRIC CO., LTD.		APPROVED : HS. OKAWA	20140912	DRAWING NO. EDC3-359165-00			
		CHECKED : KN. SHIBUYA	20140912	PART NO. FX30B-2S-7.62DSA			
		DESIGNED : DK. AIMOTO	20140912	CODE NO. CL570-3504-2-00			
		DRAWN : DK. AIMOTO	20140912				

Sep.1.2020 Copyright 2020 HIROSE ELECTRIC CO., LTD. All Rights Reserved.  
 In case of consideration for using Automotive equipment / device which demand high reliability, kindly contact our sales window correspondents.

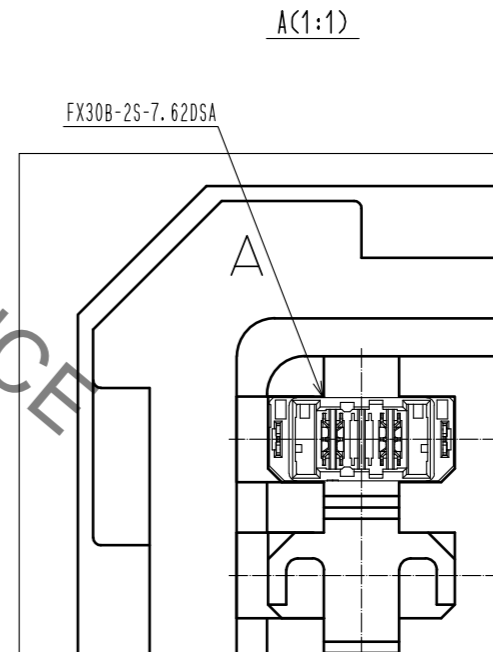
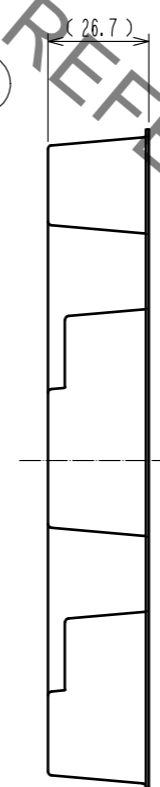
Recommended hole pattern dimension of PCB(5:1)  
 (Connector mounting side, PCB thickness:t=1.6mm)



1 Drawing for packaging(1:2)



HRS DRAWING FOR REFERENCE



<b>HRS</b>	DRAWING NO.	EDC3-359165-00
	PART NO.	FX30B-2S-7.62DSA
	CODE NO.	CL570-3504-2-00
		2/2