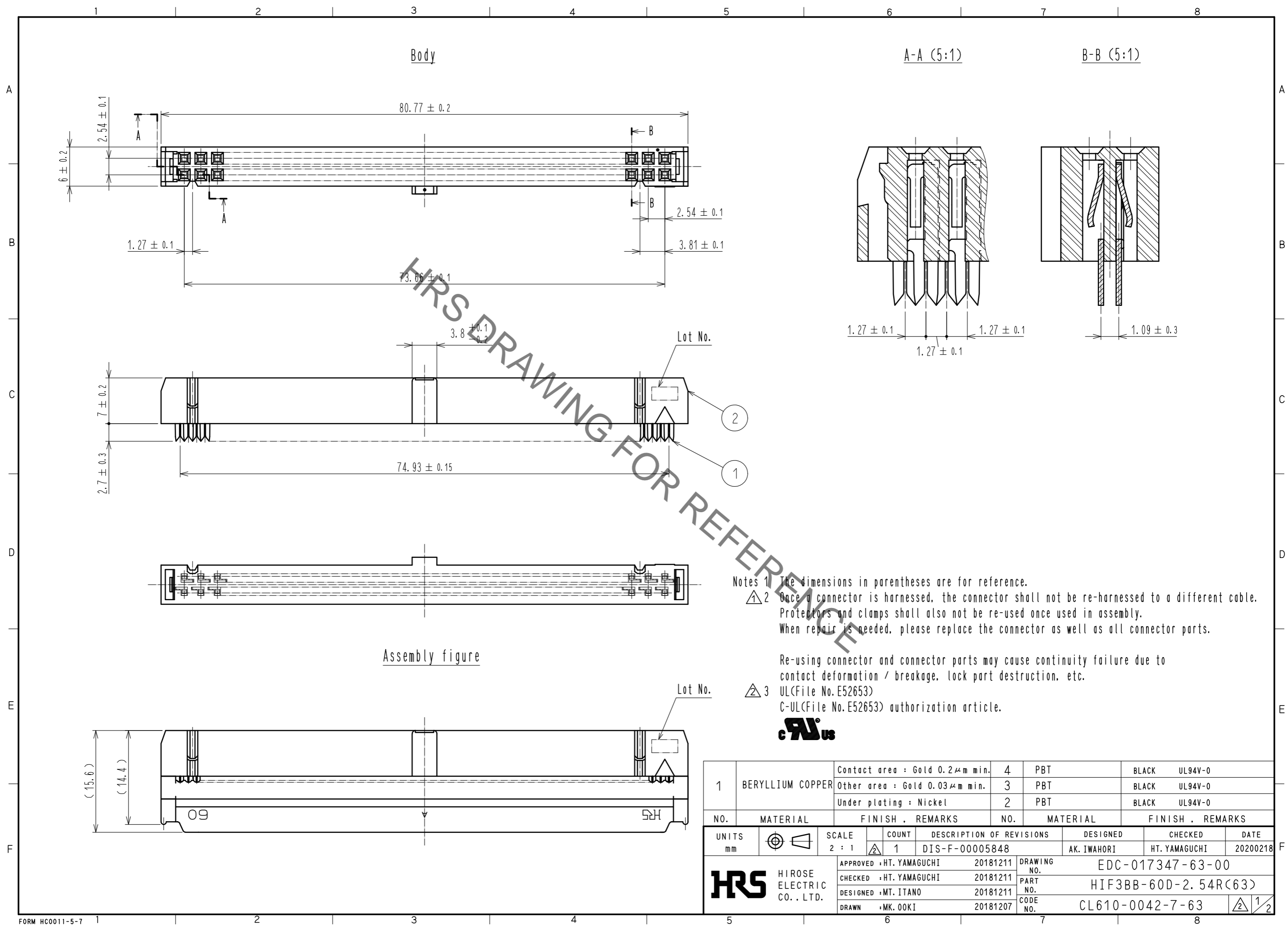


Sep.1.2020 Copyright 2020 HIROSE ELECTRIC CO., LTD. All Rights Reserved.
 In case of consideration for using Automotive equipment / device which demand high reliability, kindly contact our sales window correspondents.



HRS DRAWING FOR REFERENCE

Notes 1 The dimensions in parentheses are for reference.
 2 Once a connector is harnessed, the connector shall not be re-harnessed to a different cable. Protectors and clamps shall also not be re-used once used in assembly. When repair is needed, please replace the connector as well as all connector parts.

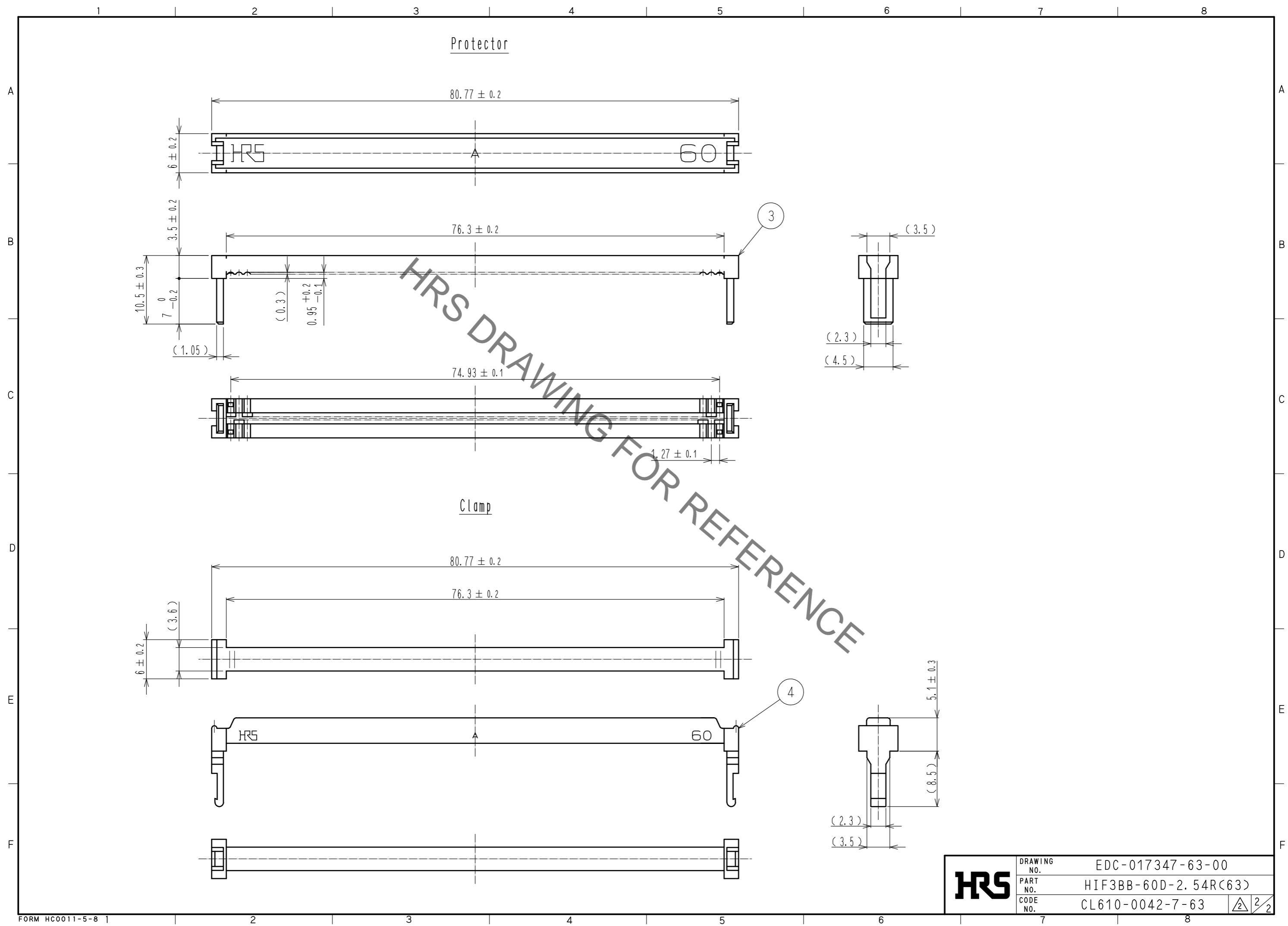
Re-using connector and connector parts may cause continuity failure due to contact deformation / breakage, lock part destruction, etc.

3 UL(File No. E52653)
 C-UL(File No. E52653) authorization article.



1	BERYLLIUM COPPER	Contact area : Gold 0.2μm min.	4	PBT	BLACK	UL94V-0
		Other area : Gold 0.03μm min.	3	PBT	BLACK	UL94V-0
		Under plating : Nickel	2	PBT	BLACK	UL94V-0
NO.	MATERIAL	FINISH . REMARKS	NO.	MATERIAL	FINISH . REMARKS	
UNITS	mm	SCALE	2 : 1	COUNT	1	DESCRIPTION OF REVISIONS
						DIS-F-00005848
		DESIGNED	AK. IWAHORI	CHECKED	HT. YAMAGUCHI	DATE
						20200218
		APPROVED	HT. YAMAGUCHI	20181211	DRAWING NO.	EDC-017347-63-00
		CHECKED	HT. YAMAGUCHI	20181211	PART NO.	HIF3BB-60D-2.54R(63)
		DESIGNED	MT. ITANO	20181211	CODE NO.	CL610-0042-7-63
		DRAWN	MK. OKI	20181207		

Sep.1.2020 Copyright 2020 HIROSE ELECTRIC CO., LTD. All Rights Reserved.
 In case of consideration for using Automotive equipment / device which demand high reliability, kindly contact our sales window correspondents.



HRS	DRAWING NO.	EDC-017347-63-00
	PART NO.	HIF3BB-60D-2.54R(63)
	CODE NO.	CL610-0042-7-63
		$\frac{2}{2}$