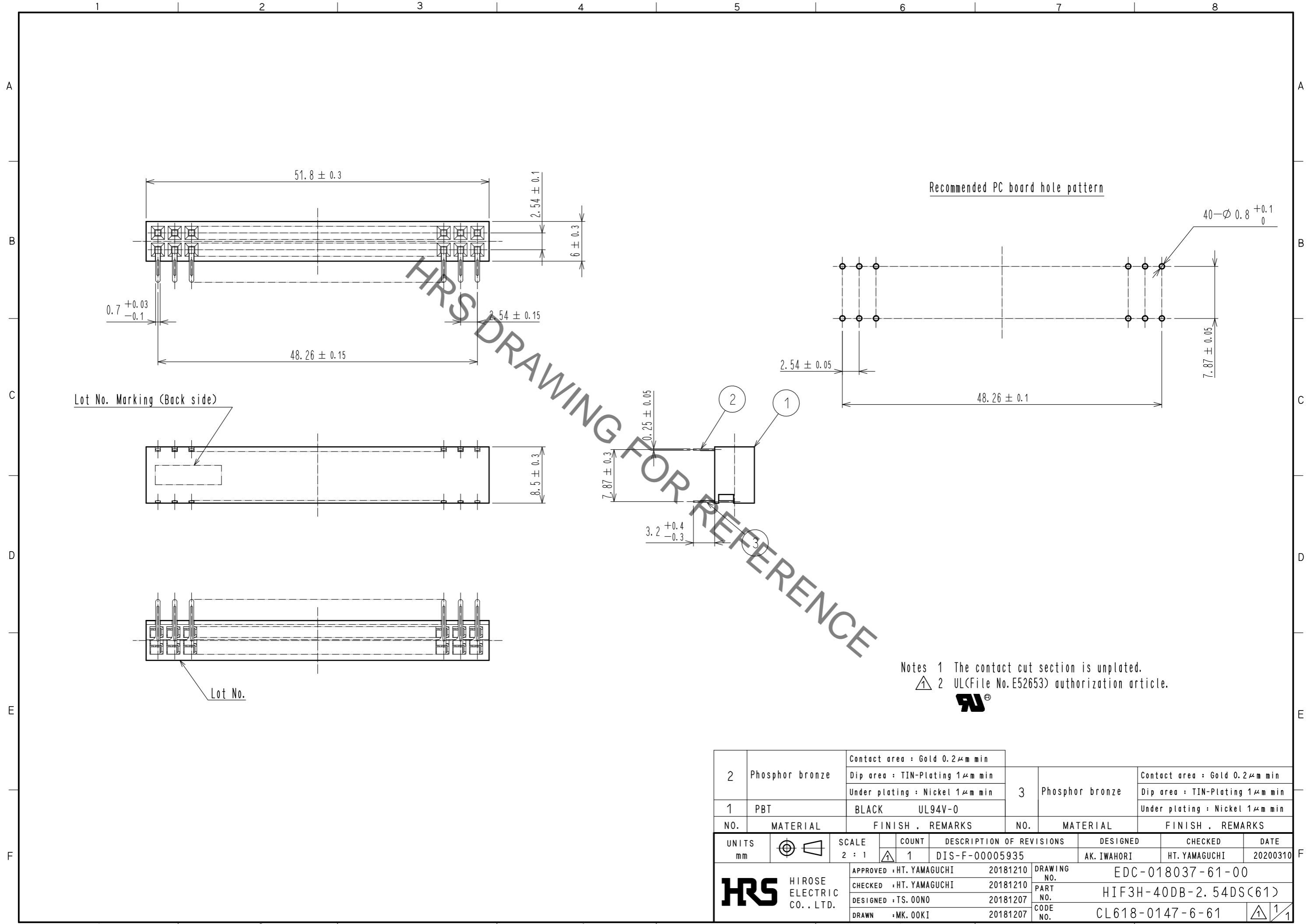


Sep.1.2020 Copyright 2020 HIROSE ELECTRIC CO., LTD. All Rights Reserved.
 In case of consideration for using Automotive equipment / device which demand high reliability, kindly contact our sales window correspondents.



HRS DRAWING FOR REFERENCE

Notes 1 The contact cut section is unplated.
 2 UL(File No.E52653) authorization article.



2	Phosphor bronze	Contact area : Gold 0.2 μ m min Dip area : TIN-Plating 1 μ m min Under plating : Nickel 1 μ m min	3	Phosphor bronze	Contact area : Gold 0.2 μ m min Dip area : TIN-Plating 1 μ m min Under plating : Nickel 1 μ m min
1	PBT	BLACK UL94V-0			
NO.	MATERIAL	FINISH . REMARKS	NO.	MATERIAL	FINISH . REMARKS
UNITS mm		SCALE 2 : 1	COUNT 1	DESCRIPTION OF REVISIONS DIS-F-00005935	
		DESIGNED AK. IWAHORI	CHECKED HT. YAMAGUCHI		DATE 20200310
HRS HIROSE ELECTRIC CO., LTD.		APPROVED : HT. YAMAGUCHI 20181210	DRAWING NO. EDC-018037-61-00		
		CHECKED : HT. YAMAGUCHI 20181210	PART NO. HIF3H-40DB-2.54DS(61)		
		DESIGNED : TS. OONO 20181207	CODE NO. CL618-0147-6-61		
		DRAWN : MK. OOKI 20181207	1/1		