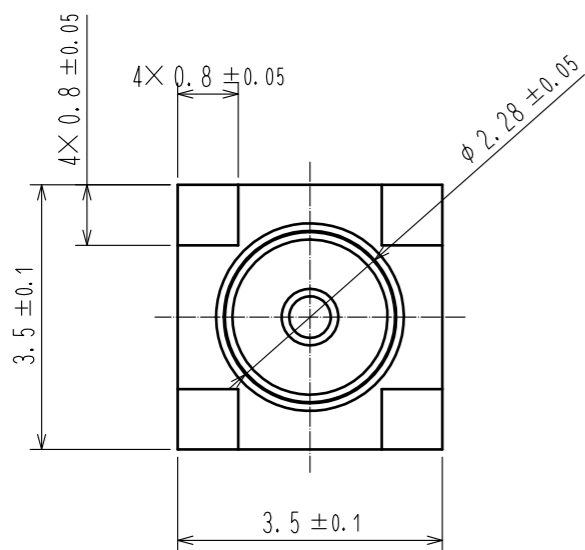
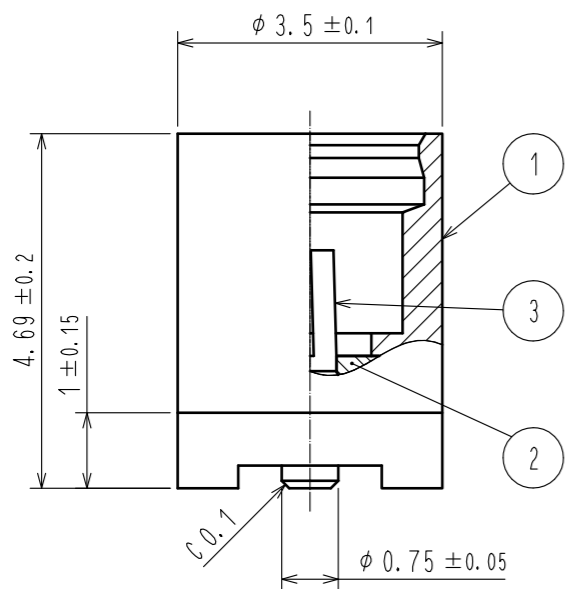
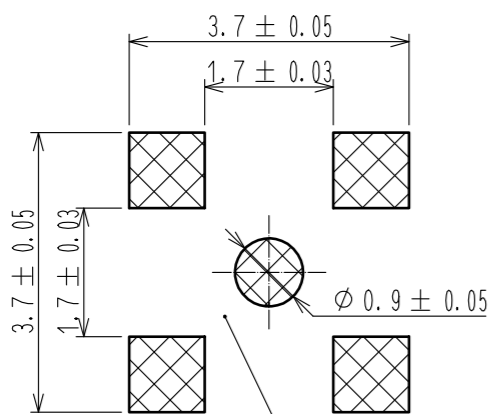


Sep.1.2020 Copyright 2020 HIROSE ELECTRIC CO., LTD. All Rights Reserved.  
In case of consideration for using Automotive equipment / device which demand high reliability, kindly contact our sales window correspondents.

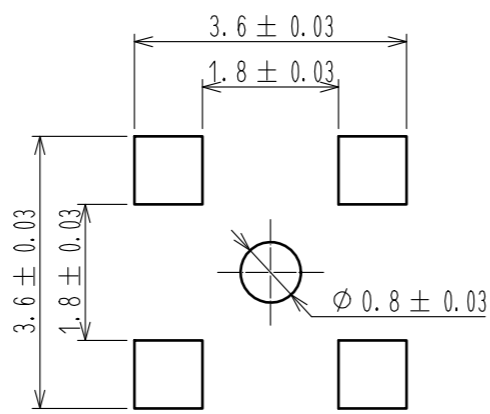


Recommended PCB layout  
(Mounting surface side)

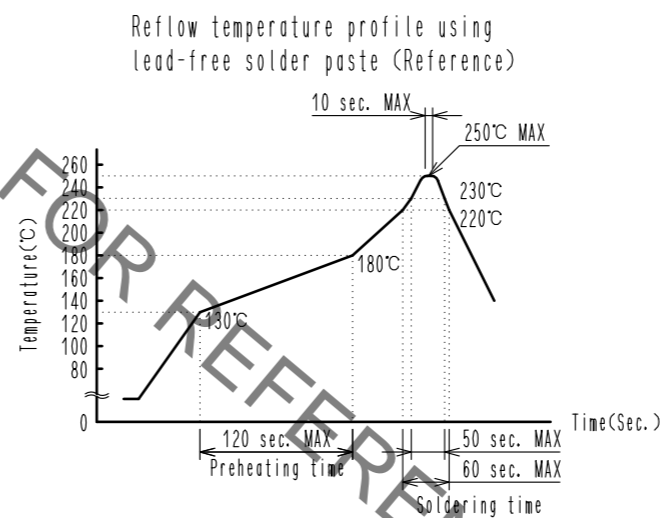
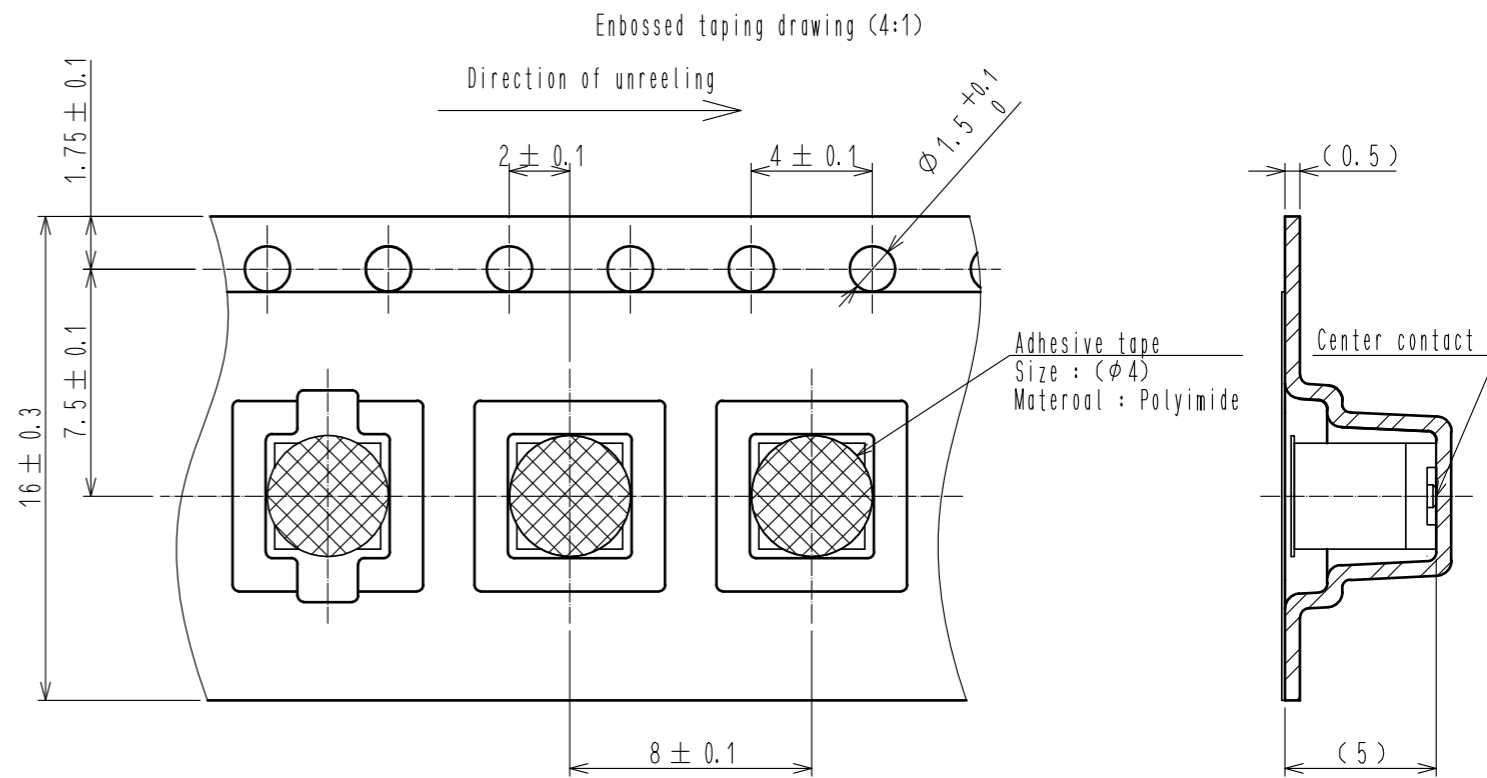


Cut-out prohibition area

Recommended metal mask dimensions  
Metal mask thickness: 0.13mm

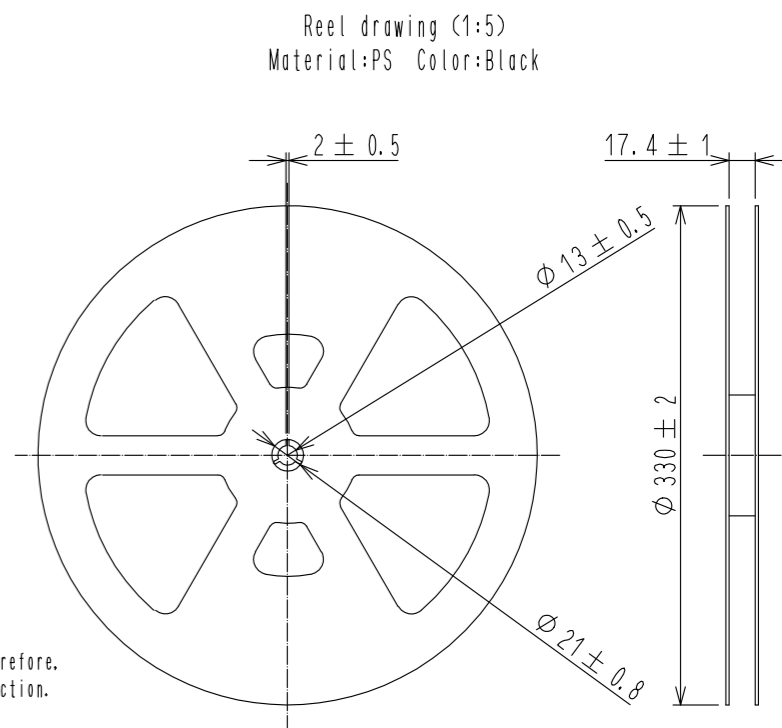


Note 1. The quantity of MMCX-R-SMT-4 is 500 connectors per reel.



Reflow method : IR reflow  
Number of Reflow cycles : 2 cycles MAX.  
1)Reflow time  
220°C, 60 sec. MAX.  
230°C, 50 sec. MAX.  
(Peak temperature 250°C, 10 sec. MAX.)  
2)Pre-heat time  
130°C to 180°C, 120 sec. MAX.

This temperature profile is per the conditions shown above.  
Additional factors, Such as solder paste type,  
PCB size and other mounted components could affect the profile, therefore,  
a thorough evaluation mounting condition is required prior to production.  
Temperature is measured at contact lead.



2	PTFE		3	BERYLLIUM COPPER	GOLD PLATING
1	BRASS	GOLD PLATING			
NO.	MATERIAL	FINISH, REMARKS	NO.	MATERIAL	FINISH, REMARKS
UNITS	mm	SCALE	COUNT	DESCRIPTION OF REVISIONS	DESIGNED
		10 : 1	△		CHECKED
					DATE
APPROVED : TO. KATAYAMA			20190604		
CHECKED : TO. KATAYAMA			20190604		
DESIGNED : NK. OOSAWA			20190604		
DRAWN : NK. OOSAWA			20190604		
DRAWING NO.				EDC-356607-00-00	
PART NO.				MMCX-R-SMT-4	
CODE NO.				CL339-0039-0-00	