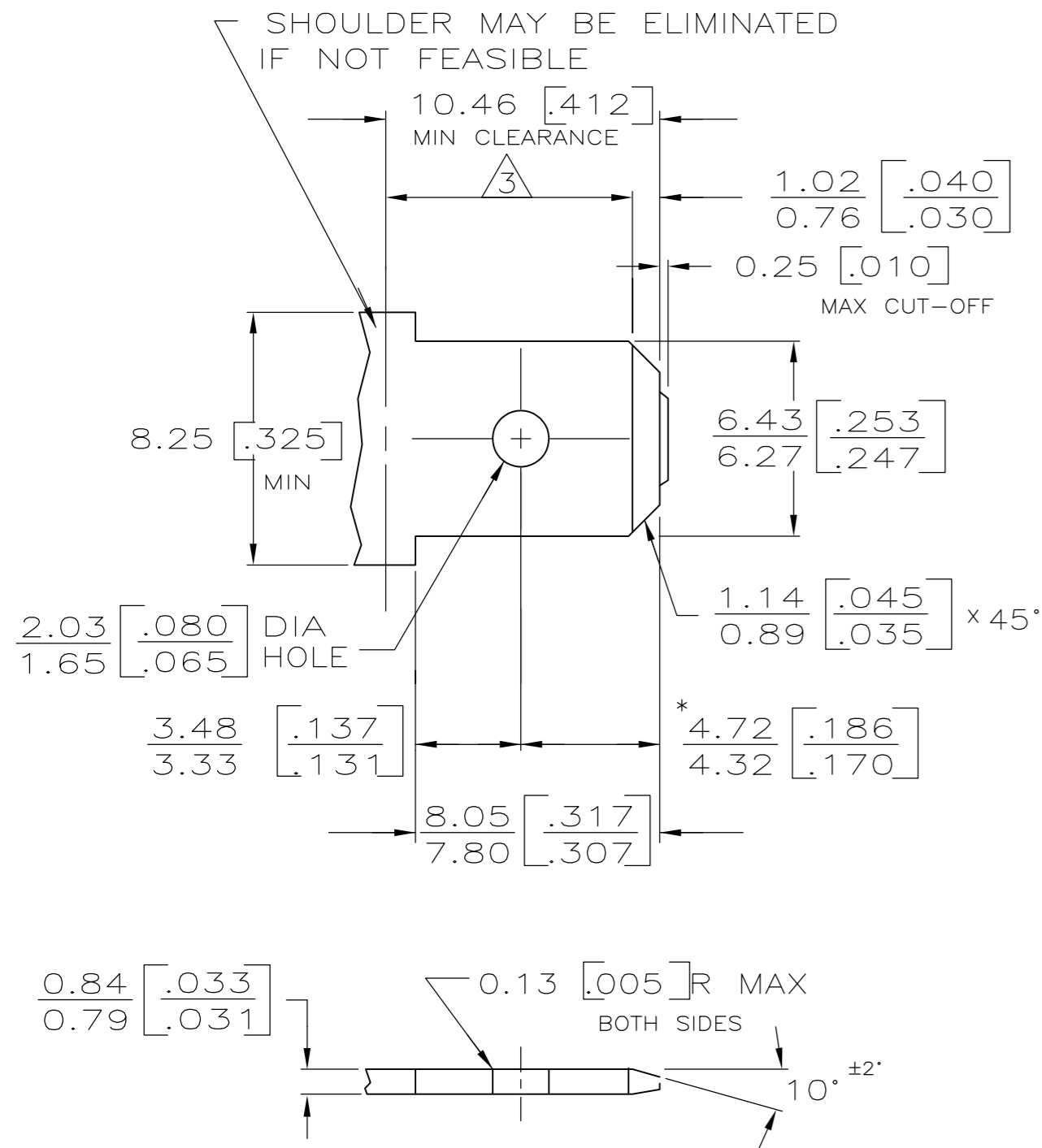


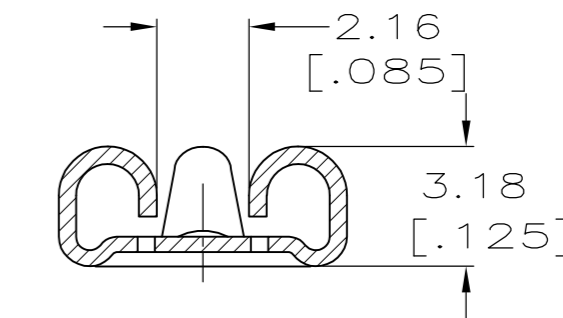
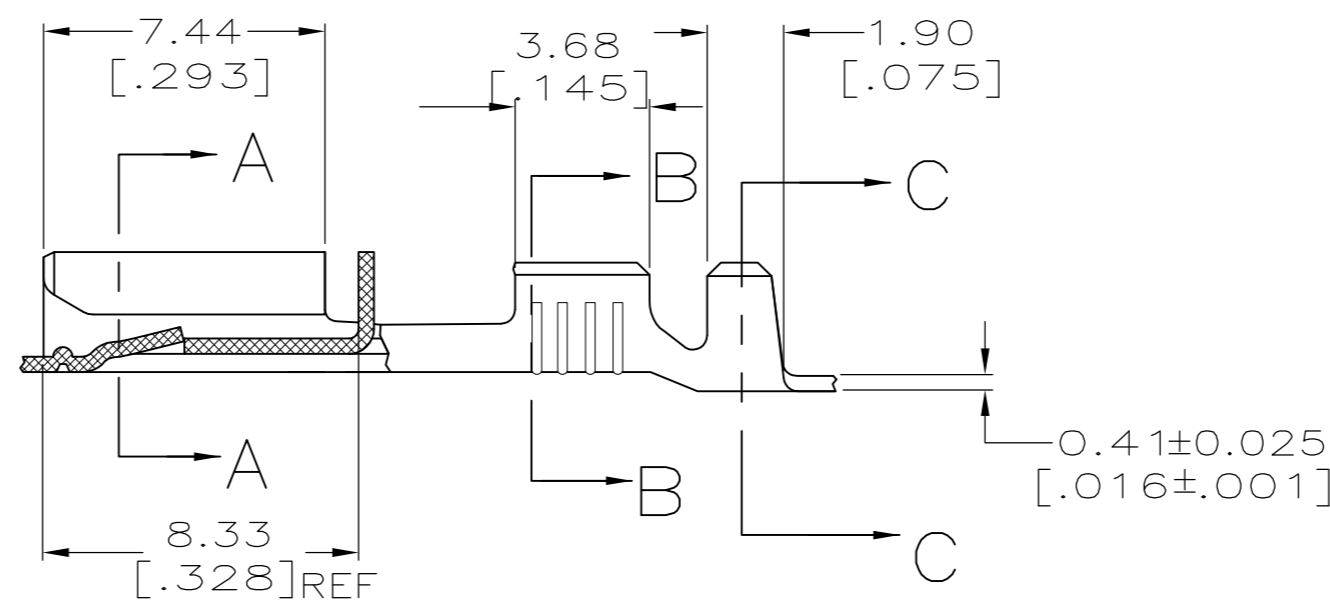
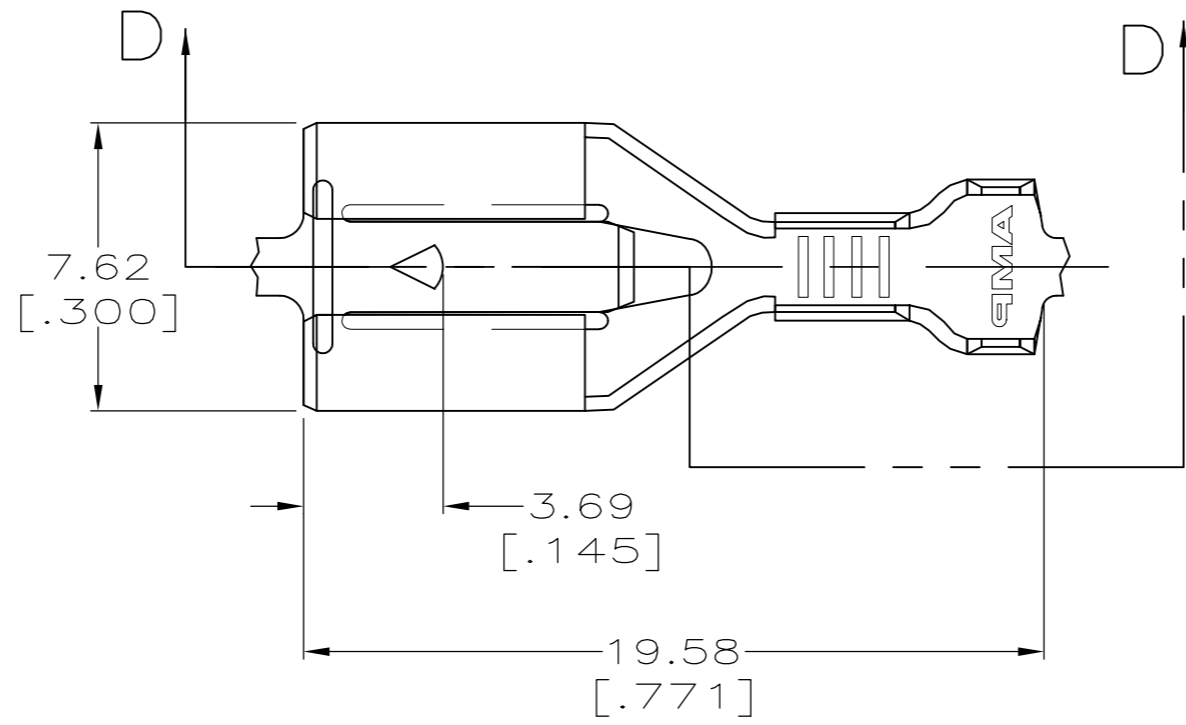
THIS DRAWING IS UNPUBLISHED. RELEASED FOR PUBLICATION
 © COPYRIGHT - By - ALL RIGHTS RESERVED.

LOC	DIST	REVISIONS			
P	LTR	DESCRIPTION	DATE	DWN	APVD
AF	50	H	REVISED PER ECR-12-013486	09JAN13	KH KR

SUGGESTED MATING TAB

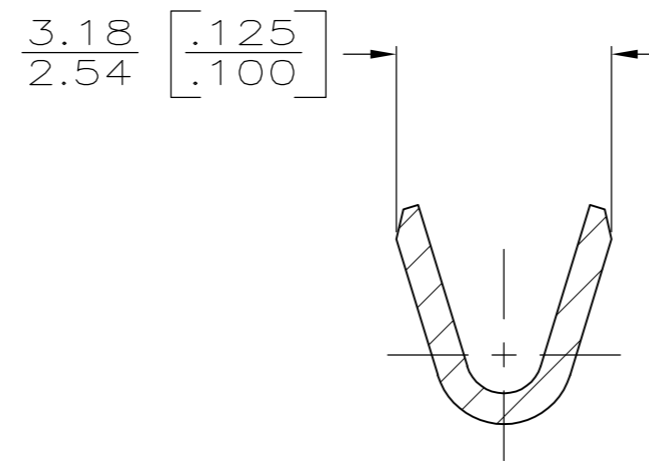


- MATL: 1/2H BRASS OR NICKEL PL STEEL.
 - NO BURRS PERMISSIBLE AT HOLE.
 - MUST BE FLAT WITHIN 0.076 [.003] OVER THIS LENGTH.
 - TIN PLATING IS REQUIRED ON BRASS WHEN TERMINAL TEMP. IS OVER 225°F, 105° C
 - HOLE MUST BE SYMMETRICAL ABOUT TAB Q̄ WITHIN 0.076 [.003]
- * TO BE USED ONLY WHEN SHOULDER IS ELIMINATED.

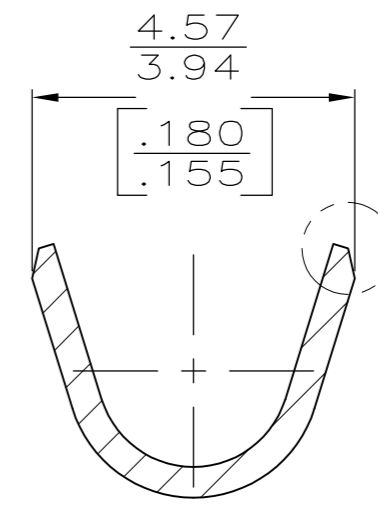


SECTION A-A

SECTION D-D



SECTION B-B



SECTION C-C

1 CONTINUOUS STRIP ON REELS.

TIN PLATE	1.52-2.54 [.060-.100] DIA	[#22-#18] AWG	63933-2
-	1.52-2.54 [.060-.100] DIA	[#22-#18] AWG	63933-1
FINISH	INSULATION RANGE	WIRE SIZE	PART NO.
THIS DRAWING IS A CONTROLLED DOCUMENT.		DWN JR RUTH 9/4/96	
DIMENSIONS: mm [INCHES]		CHK MS FEHER 9/4/96	
TOLERANCES UNLESS OTHERWISE SPECIFIED:		APVD J GILLISPIE 9/4/96	
0 PLC ± - 1 PLC ± - 2 PLC ± 0.25 [.010] 3 PLC ± - 4 PLC ± - ANGLES ± -		NAME	
MATERIAL	FINISH	PRODUCT SPEC	RECEPTACLE, POSITIVE LOCK, 6.35 [.250] SERIES
BRASS	SEE TABLE	APPLICATION SPEC	SIZE CAGE CODE DRAWING NO RESTRICTED TO
		114-2061	A2 00779 C-63933
		WEIGHT	SCALE 5:1 SHEET 1 OF 1 REV H
		CUSTOMER DRAWING	