

Basic features

| | |
|---------------------|----------------------------|
| Application | Profinet , CAT 5 |
| Approval/Conformity | CE cULus EAC WEEE |

Electrical connection

| | |
|-------------------------------------|-----------------------------------------------------|
| Bending radius min., fixed cable | 5 x D |
| Bending radius min., flexible cable | 15 x D |
| Cable | PUR Shielded Green, 0.3 m, Drag chain compatible |
| Cable diameter D | 6.70 mm ±0.30 mm |
| Cable, bending cycles min. | 2 million |
| Cable, note | Profinet Type C, CAT 5E by IEC 61156-6 |
| Conductor cross-section | 22 AWG |
| Connection 1 | M12x1-Male, Straight, 4-pin, D- coded |
| Connection 2 | RJ45-Male, Straight, 4-pin |
| Number of conductors | 4 |
| System | Molded/assembled |

Electrical data

| | |
|----------------------------------|-------------------|
| Operating voltage U _b | 125 VDC / 125 VAC |
| Rated current (40 °C) | 1.0 A |
| Transfer rate | 10...100 Mbit/s |

Environmental conditions

| | |
|-------------------------------------|-------------|
| Cable temperature, fixed routing | -40...80 °C |
| Cable temperature, flexible routing | -20...60 °C |
| Protection degree | IP67/IP20 |

Material

| | |
|-----------------------------|--------------------------------|
| Cable jacket material, note | Shielded |
| Cable jacket, material | PUR |
| Cable shield | Aluminum foil and copper braid |
| Material contact carrier | PUR |
| Material contacts | Brass |
| Material cover nut | Brass nickel plated |
| Material grip | PUR/PA |

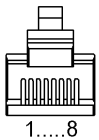
Mechanical data

| | |
|-----------------------------------------|-----------------------|
| Acceleration max., drag chain | 2 m/s ² |
| Cable jacket, color | Green |
| Cable length L | 0.30 m |
| Cable properties | Drag chain compatible |
| Horizontal travel permitted, drag chain | 5 m |
| Tightening torque pigtail | 0.6 Nm/- |
| Traverse speed max., drag chain | 200 m/min |
| Vertical travel permitted, drag chain | 5 m |

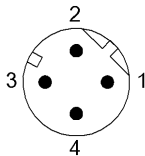
Remarks

Cable construction acc. to UL-AWM Style 20236
 Halogen-free per DIN VDE 0472 Part 815
 Silicone-free
 Flame resistance acc. to FT1
 Enclosure rating per IEC 60529 or ISO 20653, only in screwed state with the associated mating piece.

Connector Drawings

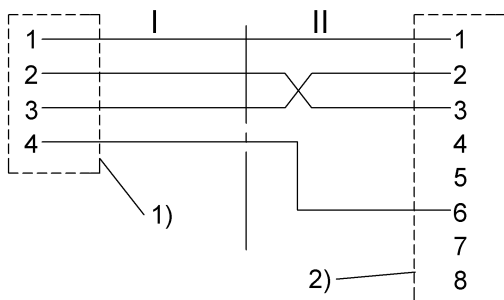


II
 PIN 1: yellow
 PIN 2: orange
 PIN 3: white
 PIN 4: n.c.
 PIN 5: n.c.
 PIN 6: blue
 PIN 7: n.c.
 PIN 8: n.c.



I
 PIN 1: yellow
 PIN 2: white
 PIN 3: orange
 PIN 4: blue

Wiring Diagrams



1) Shield on cover nut
 2) Shield on housing