

Basic features

| | |
|---------------------|-------------------|
| Application | Ethernet |
| Approval/Conformity | CE EAC WEEE |

Electrical connection

| | |
|-------------------------------------|---|
| Bending radius min., flexible cable | 10 x D |
| Cable | TPE Shielded Orange, 10.00 m, Drag chain compatible |
| Cable diameter D | 6.70 mm ±0.25 mm |
| Cable, bending cycles min. | 10 million |
| Cable, note | Ethernet, CAT 5E |
| Conductor cross-section | 24 AWG |
| Connection 1 | M12x1-Male, straight, 4-pin, D-coded |
| Connection 2 | RJ45-Male, straight, 4-pin |
| Number of conductors | 4 |
| System | Molded/assembled |

Electrical data

| | |
|-----------------------------|--------------------|
| Cable rated voltage AC max. | 600 V |
| Cable rated voltage DC max. | 600 V |
| Conductor construction | 2x2 twisted-pair |
| Conductor resistance | ≤ 26.0 Ohm/1000 ft |
| Coupling resistance max. | 100 Ohm ±15 Ohm |
| Operating capacitance | 13.5 pF/ft |
| Operating voltage Ub | 42 VDC / 30 VAC |
| Rated current (40 °C) | 1.0 A |
| Transfer rate | 10...100 Mbit/s |

Environmental conditions

| | |
|-------------------------------------|-------------|
| Cable temperature, flexible routing | -40...80 °C |
| Protection degree | IP67/IP20 |

Material

| | |
|-----------------------------|------------------------------------|
| Cable jacket material, note | Shielded |
| Cable jacket, material | TPE |
| Cable shield | Aluminum foil and copper braid |
| Material contact carrier | PUR/PBT |
| Material contacts | Brass/Phosphor bronze, gold plated |
| Material cover nut | Brass nickel plated |
| Material grip | PUR/PVC |

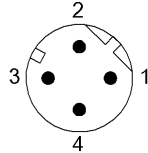
Mechanical data

| | |
|---------------------------|-----------------------|
| Cable jacket, color | Orange |
| Cable length L | 10.00 m |
| Cable properties | Drag chain compatible |
| Tightening torque pigtail | 0.6 Nm/- |

Remarks

Cable construction acc. to UL CMX Outdoor or AWM Style 2463
 Enclosure rating per IEC 60529 or ISO 20653, only in screwed state with the associated mating piece.

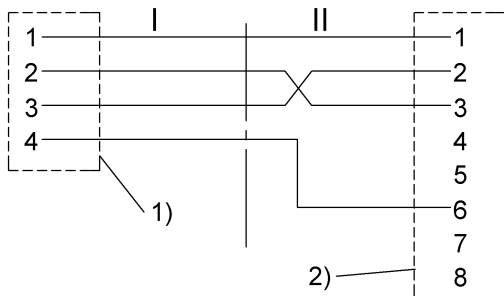
Connector Drawings



II
 PIN 1: white/orange
 PIN 2: orange
 PIN 3: white/green
 PIN 4: n.c.
 PIN 5: n.c.
 PIN 6: green
 PIN 7: n.c.
 PIN 8: n.c.

I
 PIN 1: white/orange
 PIN 2: white/green
 PIN 3: orange
 PIN 4: green

Wiring Diagrams



1) Shield on cover nut
 2) Shield on housing