

Basic features

Approval/Conformity	EAC WEEE
---------------------	-------------

Electrical connection

Cable	Drag chain compatible
Connector 01, version	Straight
Number of pins	5
System	Molded

Electrical data

Operating voltage U_b	24 VAC
Rated current (40 °C)	4.0 A

Environmental conditions

Ambient temperature	-20...80 °C
Protection degree	IP68

Material

Material contact carrier	PUR
Material contacts	Brass
Material cover nut	Die-cast zinc
Material grip	PUR

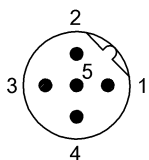
Mechanical data

Cable properties	Drag chain compatible
Tightening torque pigtail	0.6 Nm

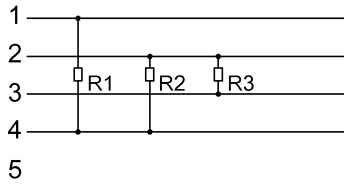
Remarks

Enclosure rating per IEC 60529, only in screwed state with the associated mating piece.

Connector Drawings



Wiring Diagrams



R1=390Ω
R2=220Ω
R3=390Ω