

**Basic features**

<b>Application</b>	Pneumatic flat cylinder with integrated groove
<b>Principle of operation</b>	BMF mounting bracket
<b>Use</b>	for magnetic sensors BMF 103

**Environmental conditions**

<b>Ambient temperature</b>	-40...85 °C
----------------------------	-------------

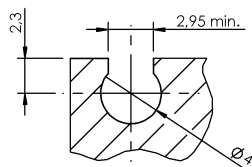
**Material**

<b>Material</b>	Brass
<b>Surface protection</b>	nickel plated

**Mechanical data**

<b>Tightening torque</b>	0.07 Nm
<b>Tightening torque clamping screw</b>	0.2 Nm

**Help Views**



C-Nut zB. SMC  
 C-slot e.g. SMC

