

1) Ultrasonic transducer axis, 2) Exit direction 90° connector, 3) Operating voltage, 4) Output function



IND. CONT. EQ
 5HP6
 for use in the secondary of
 a class 2 source of supply



Basic features

Application	Distance measurement
Approval/Conformity	cULUS LISTED CE EAC WEEE
Operating mode	Analog measurement (output curve)
Series	M18M1

Display/Operation

Adjuster	no
-----------------	----

Electrical connection

Connection	M12x1-Male, 5-pin
Polarity reversal protected	yes

Electrical data

Current draw max.	40 mA
Input function	Output curve rising/falling Teach in the working range Factory setting (Reset) Synchronization on/off Synchronization signal
Load resistance RL max. (Analog I)	500 Ohm at UB 20 V 100 Ohm at UB 20 V
Operating voltage Ub	10...30 VDC
Rated operating voltage Ue DC	24 V
Synchronization	internal, max. 10 sensors
Ultrasonic Frequency	380 kHz

Environmental conditions

Ambient temperature	-25...70 °C
Protection degree	IP67
Storage temperature	-40...85 °C

Functional safety

MTTF (40 °C)	1134 a
---------------------	--------

Material

Housing material	Brass, nickel plated PBT
Material sensing surface	PU foam/Epoxy resin/Glass
Surface protection	nickel plated

Mechanical data

Dimension	Ø 18 x 52.5 mm
Mounting	Nut M18x1

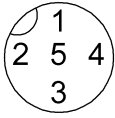
Output/Interface

Analog output	Analog, current 4...20 mA
Output characteristic	linear rising/falling

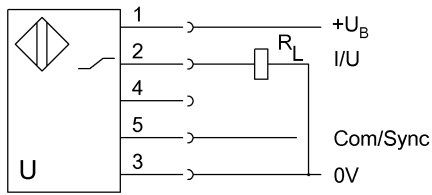
Range/Distance

Range	25...250 mm
Rated operating distance Sn	150 mm
Repeat accuracy	± 0.15 %FS
Resolution	≤ 0.070 mm

Connector Drawings



Wiring Diagrams



Technical Drawings

