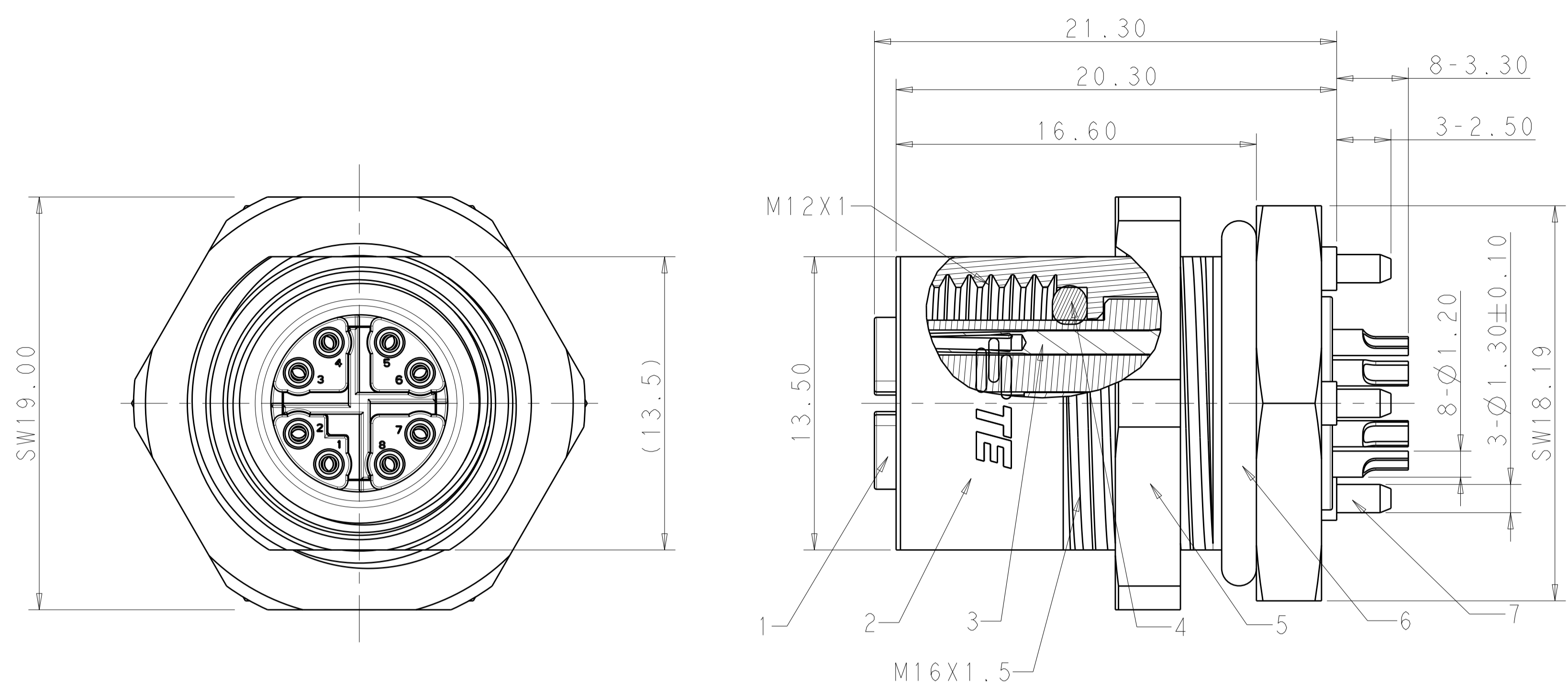
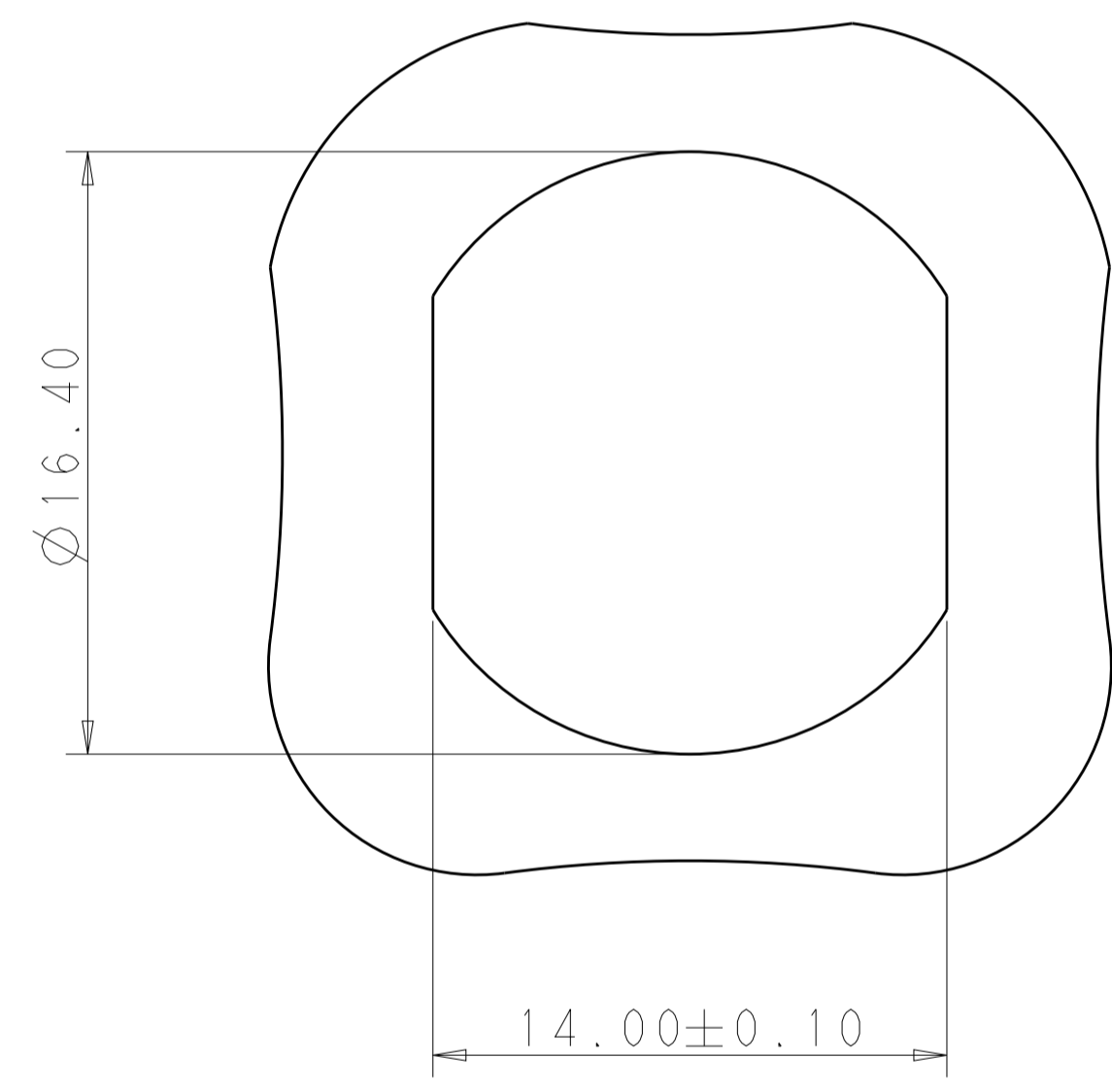
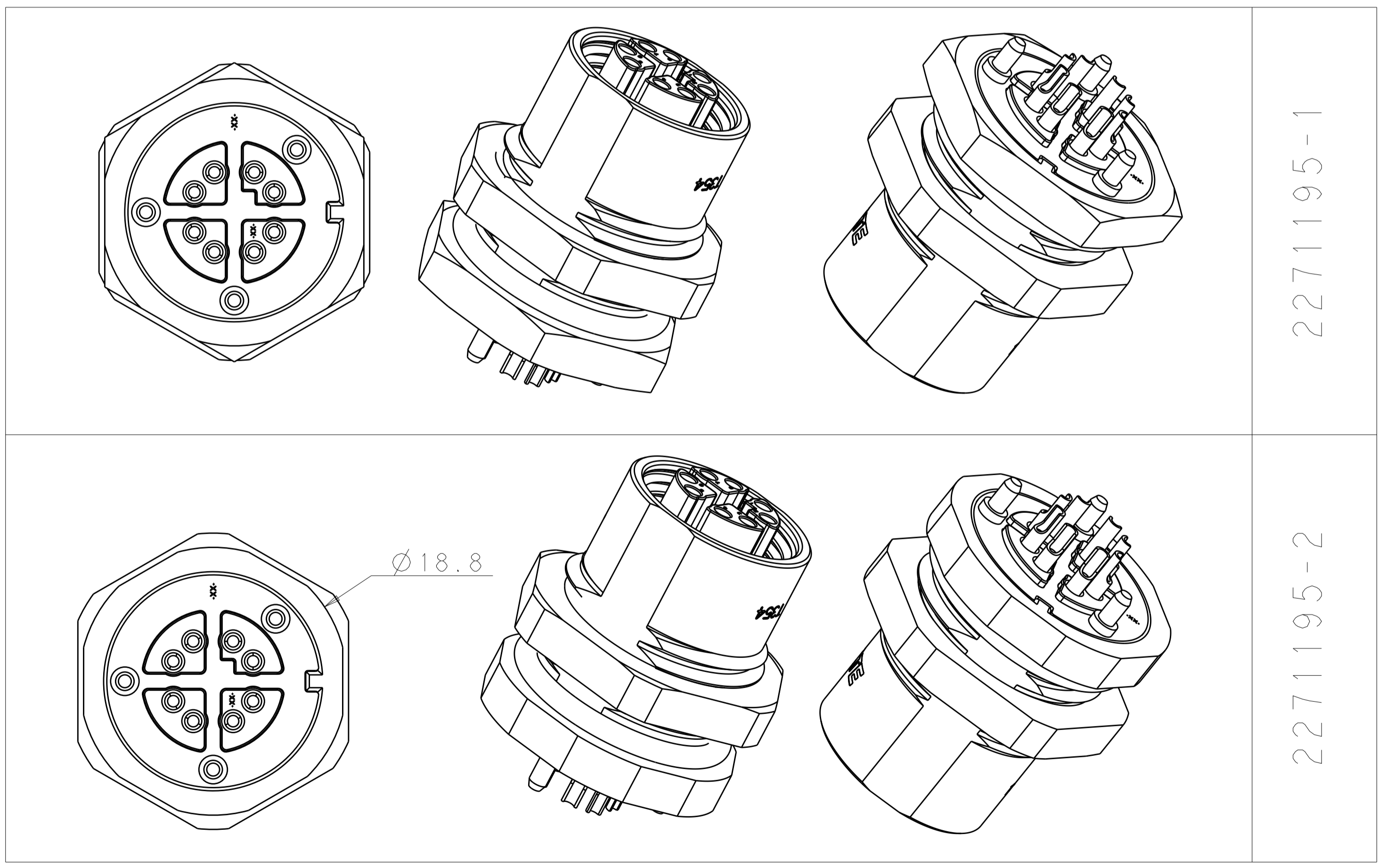


LOC		DIST		REVISIONS			
P	LTN	DESCRIPTION	DATE	DMN	APVD		
A		OFFICIAL REVISION RELEASED	24JUN2015	F. Y.	X. X.		
A1		PER ECR-15-015943	30OCT2015	N. P.	X. X.		
A2		PER ECR-20-005213	08APR2020	F. Y.	C. W.		



SPCIFICATION:

1. M12 8P RECEPTACLE REAR MOUNT SHIELDED TYPE.
2. MAX. VOLTAGE: 48V, MAX. CURRENT: 0.5A.
3. CONTACT RESISTANT: 5 mOhm MAX.
4. INSULATION WITHSTAND: 100 MOhm MIN.
5. PROTECTION: IP67.
6. TEMPERATURE RANGE: -25°~+85°.
7. PARTS INDIVIDUALLY BAGGED AND BULK PACKAGED INTO SHIPPING BOX.
8. SUITABLE WIRE RATING: 22~28AWG



RECOMMENDED PANEL HOLE SIZE
4.5mm MAX PANEL THICKNESS

ITEM	DESCRIPTION	MATERIAL	FINISH/COLOR
1	INSERT HOUSING	PA	BLACK
2	HEXAGONAL SHELL	ZINC ALUMINUM ALLOY	NICKEL OVER COPPER
3	SOCKET CONTACT	COPPER ALLOY	GOLD OVER NICKEL
4	SEALER RING	LSR	BLACK
5	HEXAGONAL NUT	COPPER ALLOY	NICKEL OVERALL
6	SEALER RING	LSR	BLACK
7	CROSS SHIELDED	ZINC ALUMINUM ALLOY	NICKEL OVER COPPER TIN OVER NICKEL

THIS DRAWING IS A CONTROLLED DOCUMENT.		DMN: FENGER YU 24JUN2015	TE Connectivity
DIMENSIONS: mm		CHK: ROBBY ZHAO 24JUN2015	
TOLERANCES UNLESS OTHERWISE SPECIFIED:		APVD: XIANG YU 24JUN2015	NAME: REAR PANEL MOUNT SOLDER CONNECTOR M12 X-CODE SIZE: CAGE CODE DRAWING NO: A100779C=2271195 RESTRICTED TO:
0 PLC ± 1 PLC ±0.3 2 PLC ±0.20 3 PLC ± 4 PLC ± ANGLES ±		PRODUCT SPEC: 108-137008 APPLICATION SPEC: 114-137008 WEIGHT:	
MATERIAL: FINISH:		Customer Drawing	SCALE: 6:1 SHEET 1 OF 1 REV: A2