

951 02 XX XX XX X X X 50 XXXX

BASIC IDENTIFIER
TYPE 5 - AS per UTE
93422 Specifications

SHELL TYPE
02 Square Flange Receptacle-
without adaptor option

TYPES OF ACCESSORIES



SHELL SIZE
08-10-12-14-16-18-20-22-24

ARRANGEMENTS

CONTACT TYPE
P Male Contact
S Female Contact

INSERT POSITIONING LETTER
Standard position : no letter
W-X-Y or Z

TYPE OF CONTACT
Size 20 Standard, none
Size 16 Standard, none
Size 8 Crimp type, consult us
Solder type standard : issue 8
Coax : Standard : none
issue 1 : 1
issue 3 : 3
issue F5 : F5

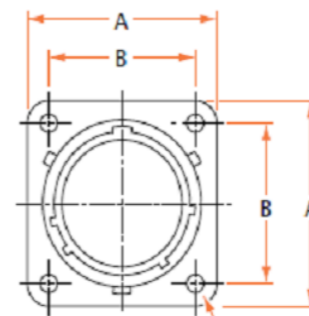
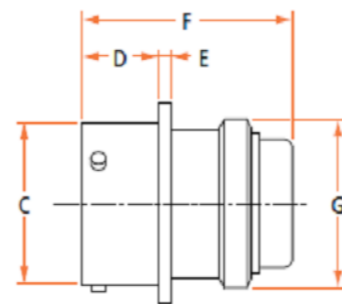
OBLIGATORY SUFFIX

SPECIAL MODIFICATIONS
311 Clear cadmium plating
031 Black Anodised plating
395 Kerosene resisting insert
A 315 Fitting for thermosink sleeve
A 231 Special olive drab cadmium
240 hrs salt spray resistance

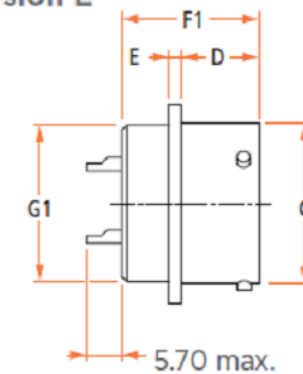
SQAURE FLANGE RECEPTACLE-WITHOUT ADAPTER OPTION

• Version R

TYPE 02 R
02 E



• Version E



4 holes $\varnothing 3.15^{+0.15}$ sizes 8 to 22
4 holes $\varnothing 3.73^{+0.15}$ size 24

Crimp type Part-number	A max.	B ± 0.1	C max.	D ± 0.15	E max.	F max.	F1 max.	G max.	G1 max.	Solder type Part-number
951-02 R 8-** P/S 50	21.10	15.08	12.03	11.13	1.45	30.35	19.50	12.75	11.35	951-02 E 8-** P/S 50
951-02 R 10-** P/S 50	24.35	18.26	15.01	11.13	1.45	30.35	19.50	15.90	14.55	951-02 E 10-** P/S 50
951-02 R 12-** P/S 50	26.70	20.62	19.07	11.13	1.45	30.35	19.50	19.10	17.70	951-02 E 12-** P/S 50
951-02 R 14-** P/S 50	29.05	23.02	22.24	11.13	1.45	30.35	19.50	22.25	20.85	951-02 E 14-** P/S 50
951-02 R 16-** P/S 50	31.30	24.58	25.42	11.13	1.45	30.35	19.50	25.45	24.00	951-02 E 16-** P/S 50
951-02 R 18-** P/S 50	33.70	26.98	28.60	11.13	1.45	30.35	19.50	27.05	25.50	951-02 E 18-** P/S 50
951-02 R 20-** P/S 50	36.85	29.36	31.77	14.30	2.25	33.10	21.10	30.20	28.65	951-02 E 20-** P/S 50
951-02 R 22-** P/S 50	39.95	31.76	34.94	14.30	2.25	33.10	21.10	33.35	31.85	951-02 E 22-** P/S 50
951-02 R 24-** P/S 50	43.15	34.92	38.12	15.10	2.25	33.10	21.10	36.55	35.00	951-02 E 24-** P/S 50

CHARACTERISTIQUES

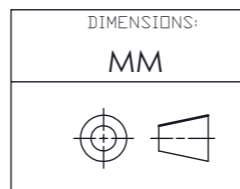
- Shell material : Aluminium alloy
- Plating : Standard plating - Olive Drab Cadmium passivated.
Other plating option - Clear Cadmium,
Black Anodised for tropical environment
- Type of contact : Crimp or solder type
- Insert material for,
Crimp type contacts : Fluoro silicone
Solder type (Nonremovable) contacts : Neoprene
- Temperature range:
Crimp type -55°C to +150°C
Solder type -55°C to +125°C
- Service Voltage :
Service rating 1 : 500 VRMS 50 Hz
Service rating 2 : 750 VRMS 50 Hz



ADAPTOR TYPE

Accessories	Crimping contacts Shell							Soldering contacts* Shell						
	00	01	02	06	07	08	00	01	02	06	07	08		
Nut	R	R	-	R	R	-	E	E	-	E	E	-		
Adaptor	RA	RA	-	RA	-	-	A	A	-	A	-	-		
Straight cable clamp	RC	RC	-	RC	RC	-	EC	EC	-	EC	EC	-		
Water-tight	RJ	RJ	-	RJ	RJ	-	J	J	-	J	J	-		
Potting cup	RP	RP	-	RP	RP	-	P	P	-	P	P	-		
Nut	-	SK	-	SK	-	-	EK	-	-	EK	-	-		
Without nut	-	-	R	-	RA	-	-	-	E	-	A	-		
Elbowed cable clamp	-	-	-	-	-	RC	-	-	-	-	-	EC		
Closed elbowed cable clamp	-	-	-	-	-	SC	-	-	-	-	-	C		
Closed water-tight end bell	-	-	-	-	-	SJ	-	-	-	-	-	EJ		
Water-tight colletting end bell	-	-	-	-	-	SK	-	-	-	-	-	EK		
Elbowed cable clamp and water-tight	-	-	-	-	-	SL	-	-	-	-	-	EL		
Grounding adaptor	RT	RT	-	RT	RT	-	-	-	-	-	-	-		

*Consult us for the soldering contact version.



DIMENSIONS:	TOLERANCES UNLESS OTHERWISE SPECIFIED:
MM	
0 PLC	\pm
1 PLC	± 0.05
2 PLC	± 0.05
3 PLC	± 0.02
4 PLC	\pm

ANGLES \pm °
SURFACE TEXTURE

DWN LAKSHMI SUDHA R	MATERIAL -	HEAT TREAT -
CHK RAKESH S	TE Connectivity	
APVD VINCENT P		
NAME 951 Series_Square Flange Receptacle without adaptor option		
SCALE 2:1	SIZE A3	DRAWING NO 951-02_++
SHEET 1 OF 1		REV A

THIS INFORMATION IS CONFIDENTIAL AND PROPRIETARY TO TYCO ELECTRONICS CORPORATION AND ITS WORLDWIDE SUBSIDIARIES AND AFFILIATES (TE). IT MAY NOT BE DISCLOSED TO ANYONE, OTHER THAN TE PERSONNEL, WITHOUT AUTHORIZATION FROM TE (www.TE.com).

THIS DRAWING IS A CONTROLLED DOCUMENT

DWG NO 951-02_++