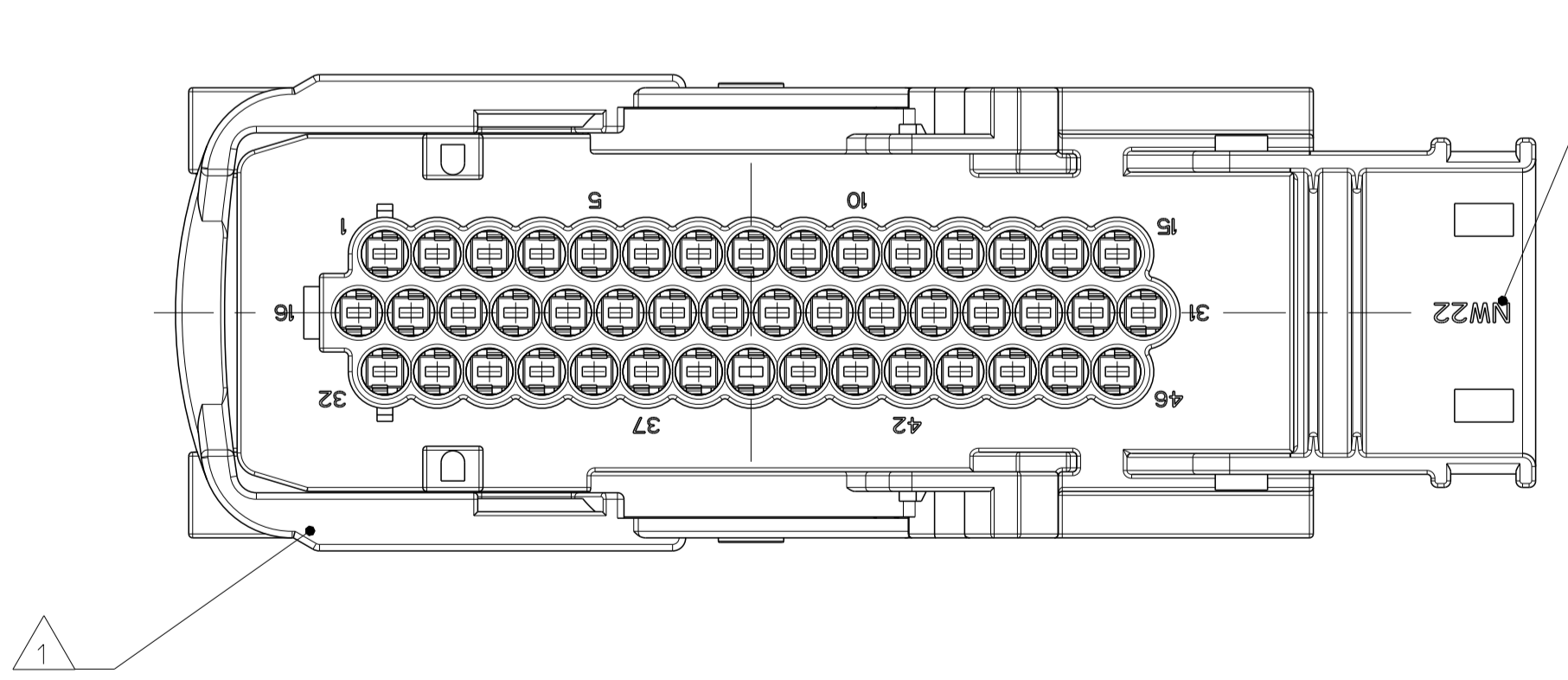
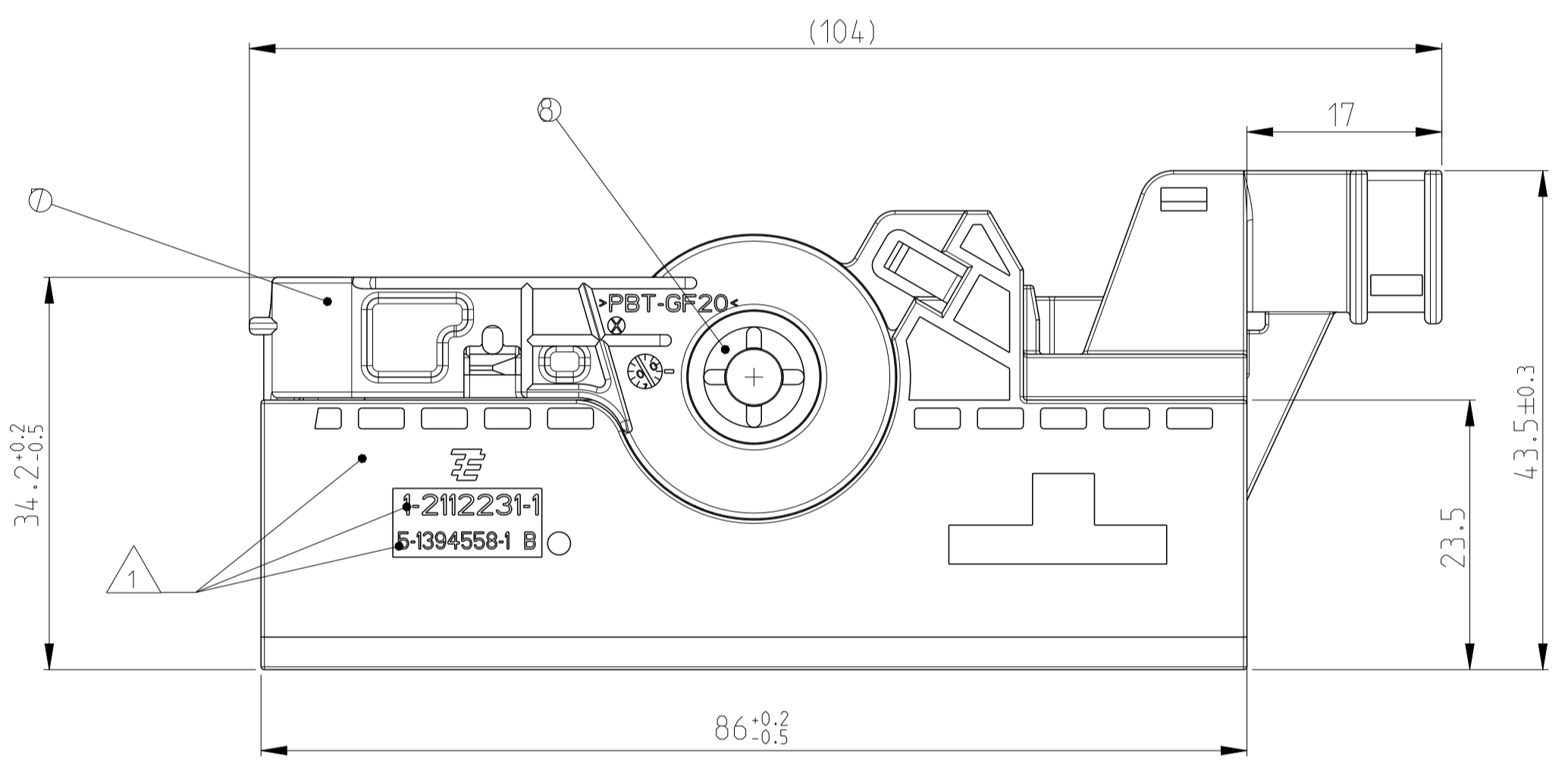
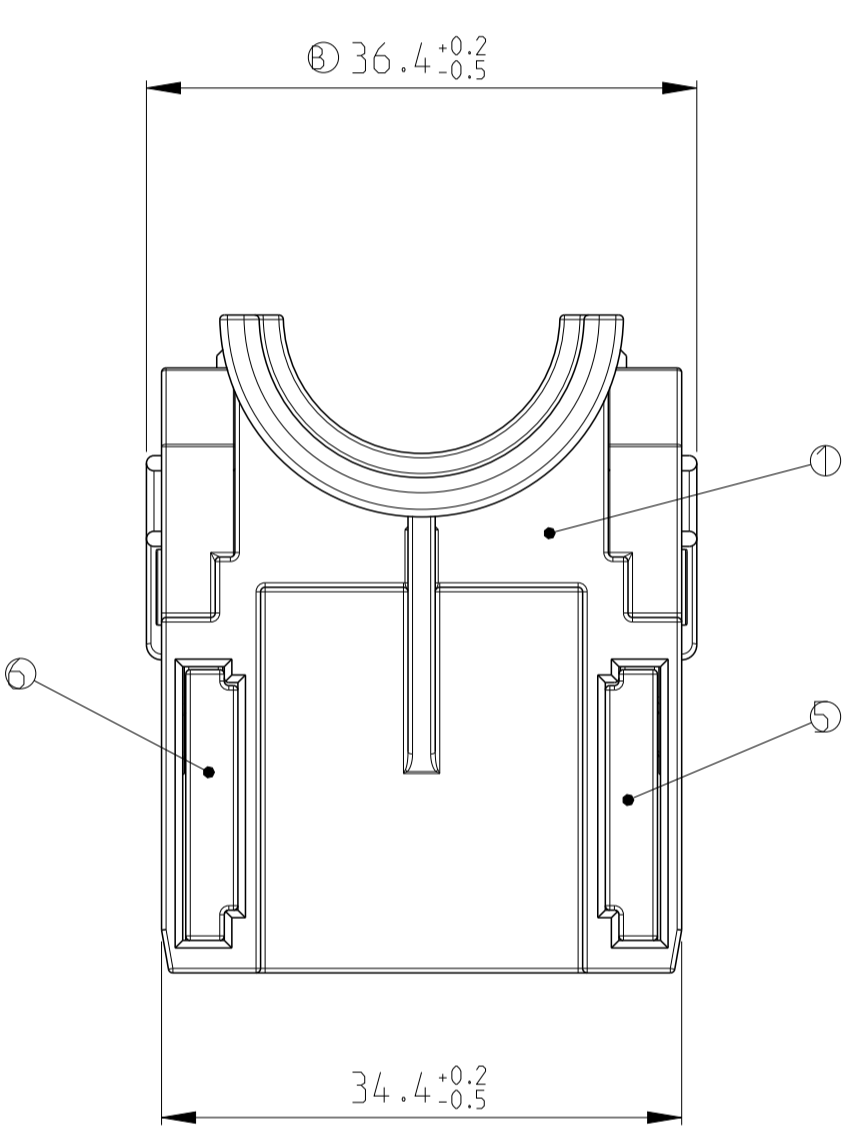
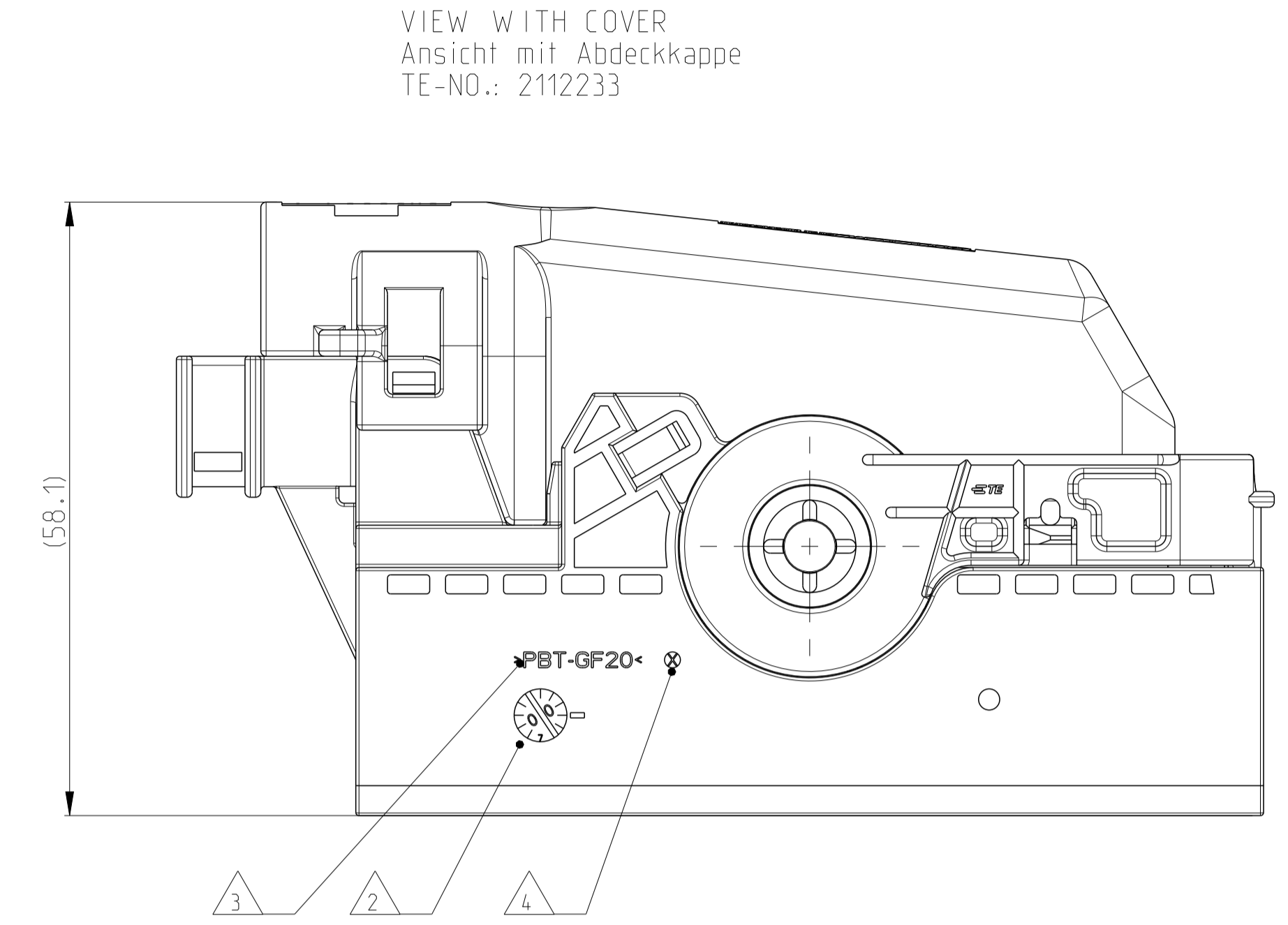
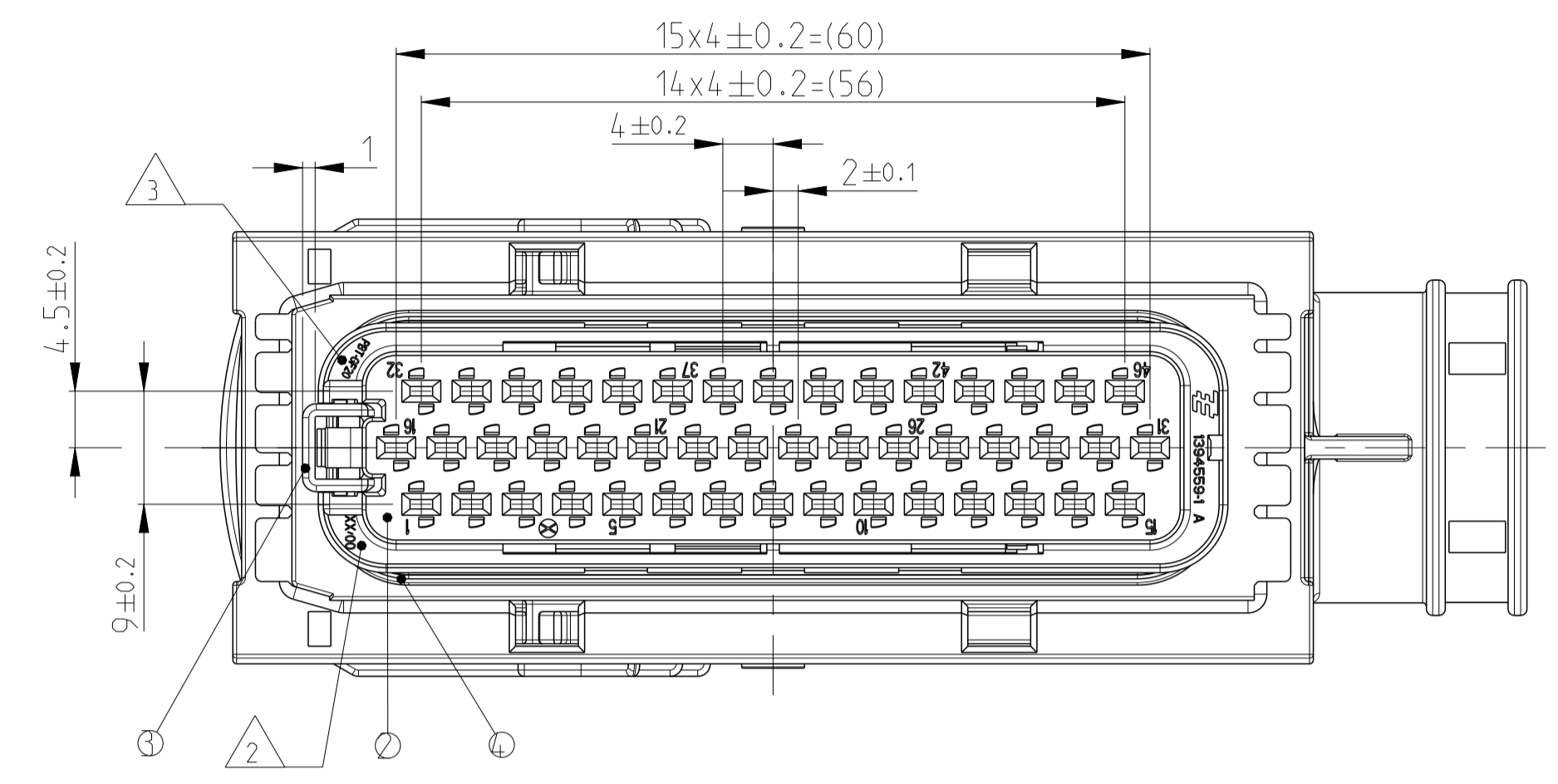


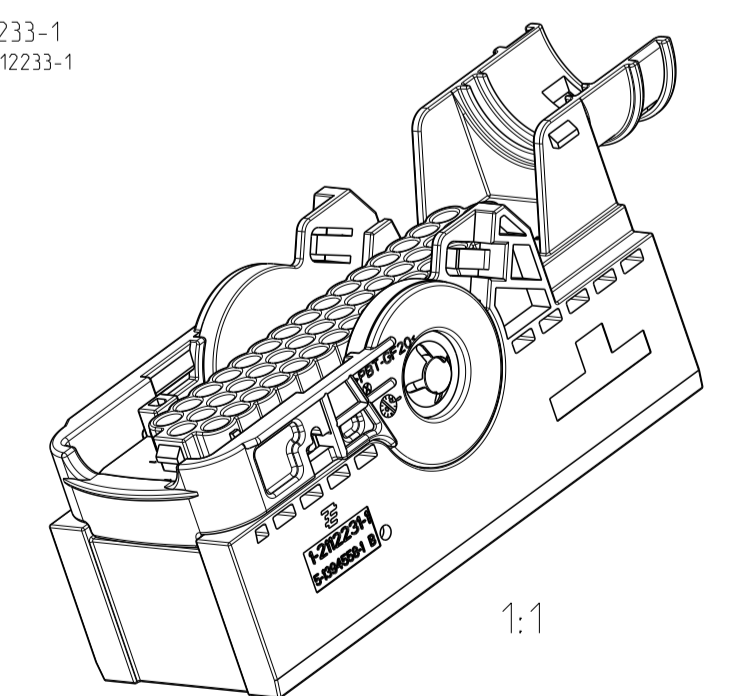
LOC	DIST	REV	DATE	BY	APPV
A1	-	A	08SEP2009	GB	CE
		B	19NOV2012	SH	CE

SLIDING DISTANCE OF SECONDARY LOCKING DEVICE IN LOCKED POSITION.
Verschiebeweg der zweiten Kontaktsicherung in die Endraststellung.



NOTES

- 1 TE-LOGO AND/OR TE-NUMBER
TE-Logo und/oder TE-Nummer
- 2 PRODUCTION DATE
Produktionsdatum
- 3 MATERIAL MARKING ACC. TO VDA 260
Werkstoffkennzeichnung nach VDA 260
- 4 CAVITY MARKING
Nestmarkierung
- 5 LAYER PACKAGING IN CORRUGATED BOX
Lagenverpackung im Versandkarton
- 6 FITS TO TE INTERFACE-DRAWING NO. 114-18455-1.
Passend zu TE Ausfuehrungsvorschrift Nr. 114-18455-1.
- 7 CONTACT-CAVITIES SUITABLE FOR AMP MCP1.5-CONTACTS WITH SINGLE-WIRE-SEAL ACC. TO PRODUCT-GROUP-DRAWING TE-NO.: 1241436
MAX. WIRESIZE: 1.5 mm² FLR / AWG 16 TXL
- 8 CONTACT CAVITIES SUITABLE FOR AMP MCP1.5-CONTACTS WITH SINGLE-WIRE-SEAL ACC. TO PRODUCT-GROUP-DRAWING TE-NO.: 1241436
MAX. WIRESIZE: 1.5 mm² FLR / AWG 16 TXL
- 9 SUITABLE FOR CORRUGATED TUBE WITH NOMINAL WIDTH NW 22
Passend fuer Wellrohr Nennweite NW 22
- 10 FITS TO TE COVER 2112233-1
Passend fuer TE Abdeckung 2112233-1



TE-NO.	REV.	QTY.	DESCRIPTION SINGLE PARTS Beschreibung Einzelteile	REV.	MATERIAL	SURFACE/OPPLÄCHE COLOUR/FARBE	ITEM NO I.T.N.
1-2112231-1	B	2	GUARD CAM Klemmscheibe	A	STEEL/Stahl	ZINC PLATED, PASSIVATED verzinkt, passiviert	8
		1	LEVER Hebel	B	PBT-GF20	YELLOW gelb	7
		1	SLIDE, RIGHT Schieber, rechts	B	PA66-GF30	W INERED weinrot	6
		1	SLIDE, LEFT Schieber, links	B	PA66-GF30	W INERED weinrot	5
		1	SEAL Dichtung	B	SILICONE	ORANGE orange	4
		1	SECONDARY LOCKING DEVICE Zweite Kontaktsicherung	A	PBT-GF30	YELLOW gelb	3
		1	CAVITY BLOCK Kammerblock	A	PBT-GF20	BLACK schwarz	2
		1	REC. HSG., 46POS. Buchsengeh., 46pol.	B	PBT-GF20	BLACK schwarz	1

THIS DRAWING IS A CONTROLLED DOCUMENT.
OTHER DIMENSIONS AND TOLERANCES ARE SPECIFIED IN THE DRAWING.
ANDERE DIMENSIONEN UND TOLERANZEN SIND IN DER ZEICHNUNG ANGEFÜHRT.

OWN Gajanan Bhal	09SEP2009	TE Connectivity
CHK F. Ellrop	25SEP2009	
APVD F. Ellrop	25SEP2009	
NAME 46POS., AMP MCP1.5K RECEPTACLE HOUSING, SEALED		
PRODUCT SPEC 108-94216		
APPLICATION SPEC 114-94012		
WEIGHT 65.5 g		
CUSTOMER DRAWING	/KUNDENZEICHNUNG	SCALE MASSSTAB 2:1
		SHEET BLATT 1 OF 1
		REV B