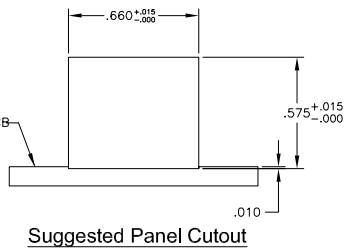
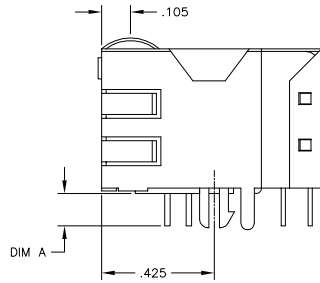
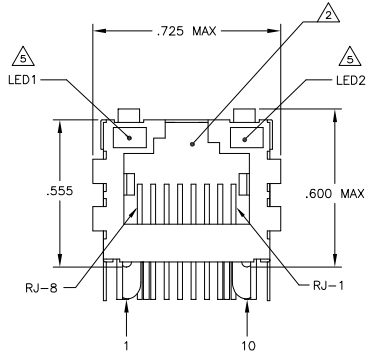
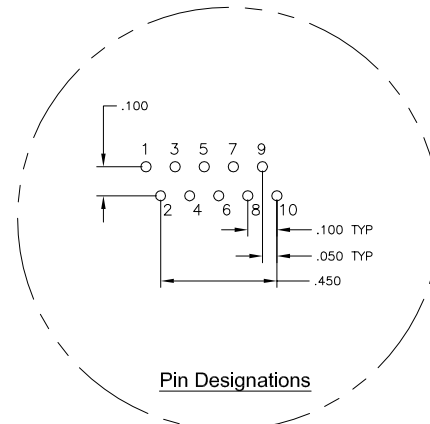
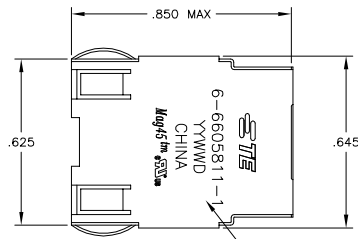
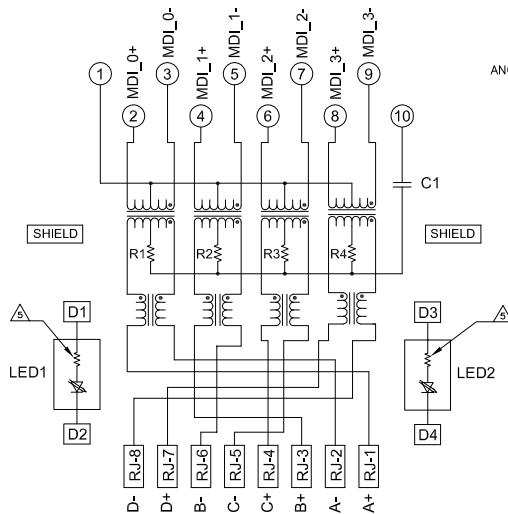


LOC	DIST	REV	PER	DESCRIPTION	DATE	BY	APP
AA	22	C	REV	ECO-09-022155	090CT2009	VL	LR
		C1	REV	ECO-10-000444	20JAN2010	KK	HMR
		D	ECO	-11-013430	30MAY2011	EL	LR

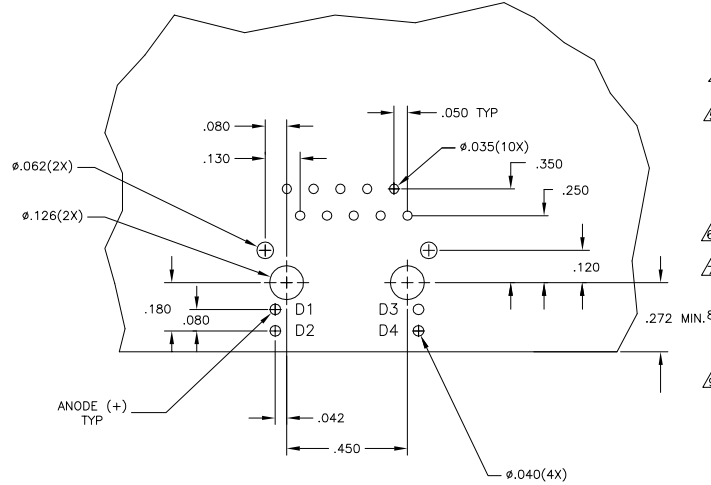
MECHANICAL:



7G01P1 SERIES GIGABIT CIRCUIT



C1=1000pF, 2kV CAPACITOR
R1-R4 = 75 OHMS, 1/16 W RESISTORS



Suggested PCB Layout
(Component Side)

- MATERIALS:**
 - HOUSING - THERMOPLASTIC PET POLYESTER FLAMMABILITY RATING UL 94V-0.
 - SHIELD - .010" THICK, C26800 BRASS PREPLATED WITH 30μINCH MIN SEMI-BRIGHT NICKEL, SOLDER TABS POST DIPPED WITH 100μINCH MIN SAC SOLDER.
 - MOD JACK CONTACTS - 0.0157" x 0.018" PHOSPHOR BRONZE, 50μINCH MIN OVERALL NICKEL UNDERPLATE, WITH SELECT 50μINCH MIN HARD GOLD FINISH PLATE. SOLDERTAILS WITH 100μINCH MIN MATTE TIN AND/OR SAC SOLDER DIP.
 - LIGHT EMITTING DIODE(LED) - DIFFUSED EPOXY LENS, .020" x .020" CARBON STEEL WIREFRAME LEADS PRE-PLATED WITH 80μINCH SILVER OVER 4.0μINCH NICKEL UNDERPLATE OVER 4.0μINCH COPPER UNDERPLATE, POST-PLATED WITH 100μINCH MIN MATTE TIN AND/OR SAC SOLDER DIP OR PURE TIN SOLDER DIP.

- RJ45 JACK CAVITY CONFORMS TO FCC RULES AND REGULATIONS PART 68, SUB PART F.**

- MAGNETICS**
 - IMPEDANCE: 100 OHMS
 - TURNS RATIO (CHIP: CABLE): 1:1 ALL FOUR PAIRS
 - OPEN CIRCUIT INDUCTANCE (OCL): 350nH MIN @100kHz, 0.1VRMS, 8mADC BIAS FROM 0°C TO 70°C, ALL FOUR PAIRS
 - ALL FOUR PAIRS BI-DIRECTIONAL
 - PERFORMANCE @ 25°C:
 - INSERTION LOSS (IL): 1.1dB MAX FROM 0.5MHZ TO 100MHZ
 - RETURN LOSS (RL): 18dB MIN FROM 0.5MHZ TO 40MHZ
 - 12-20LOG(f/80)dB MIN FROM 4.0.1MHZ TO 100MHZ
 - CROSSTALK ATTENUATION: 35dB MIN FROM 0.5MHZ TO 40MHZ
 - 33-20xLOG(f/50)dB MIN FROM 4.0.1MHZ TO 100MHZ
 - COMMON MODE REJECTION RATIO (CMRR): 30dB MIN FROM 0.5MHZ TO 100MHZ
 - ISOLATION VOLTAGE: 2250VDC (MAX) FOR 60 SECONDS WITH A RISE TIME OF 500V/SEC.

- 4. OPERATING TEMPERATURE: FROM 0°C - +70°C.**

- LED WITH 250 OHM RESISTORS, LED IS DRIVEN WITH 5V VOLTAGE AND THE MAX OPERATING CURRENT IS 20mA.**
 - LED COLOR : DOMINANT WAVELENGTH (AD): GREEN 568 nm TYP @ VF=5V
 - FORWARD CURRENT (IF): GREEN 12 mA TYP @ VF=5V
 - DOMINANT WAVELENGTH (AD): YELLOW 588 nm TYP @ VF=5V
 - FORWARD CURRENT (IF): YELLOW 13 mA TYP @ VF=5V

- THE MAGNETICS ARE SYMMETRICAL AND SUPPORT AUTO-MDX.**
- TE CONNECTIVITY LOGO, PART NUMBER, DATE CODE, COUNTRY OF ORIGIN AND AGENCY APPROVAL MARKING IN APPROXIMATE LOCATION SHOWN.**

- THESE PARTS ARE RECOMMENDED FOR WAVE SOLDERING PROCESS, PREHEAT TEMPERATURE IS 120°C TO 160°C, 120 SECONDS TO 180 SECONDS, PEAK WAVE SOLDERING TEMPERATURE IS 260°C MAX, 10 SECONDS MAX.**

- OBsolete PARTS: OBSOLETE CIS STREAMLINING PER D.RENAUD/D.SINISI**

INCHES	MILLIMETERS	CONVERSION FACTOR	CONVERSION FACTOR	CONVERSION FACTOR
.145±.010	YES	GREEN	GREEN	6-6605811-1
.145±.010	YES	YELLOW	GREEN	5-6605811-2
.145±.010	YES	GREEN	YELLOW	5-6605811-1
.165±.010	YES	GREEN	GREEN	2-6605811-1

DIMENSIONS:		DRAWING NO.		DATE		REV	
INCHES	MILLIMETERS	108-2100	108-2100	108-2100	108-2100	108-2100	108-2100
0.100	2.54	108-2100	108-2100	108-2100	108-2100	108-2100	108-2100
0.125	3.175	108-2100	108-2100	108-2100	108-2100	108-2100	108-2100
0.150	3.81	108-2100	108-2100	108-2100	108-2100	108-2100	108-2100
0.175	4.445	108-2100	108-2100	108-2100	108-2100	108-2100	108-2100
0.200	5.08	108-2100	108-2100	108-2100	108-2100	108-2100	108-2100
0.225	5.715	108-2100	108-2100	108-2100	108-2100	108-2100	108-2100
0.250	6.35	108-2100	108-2100	108-2100	108-2100	108-2100	108-2100
0.275	6.985	108-2100	108-2100	108-2100	108-2100	108-2100	108-2100
0.300	7.62	108-2100	108-2100	108-2100	108-2100	108-2100	108-2100
0.325	8.265	108-2100	108-2100	108-2100	108-2100	108-2100	108-2100
0.350	8.91	108-2100	108-2100	108-2100	108-2100	108-2100	108-2100
0.375	9.555	108-2100	108-2100	108-2100	108-2100	108-2100	108-2100
0.400	10.2	108-2100	108-2100	108-2100	108-2100	108-2100	108-2100
0.425	10.845	108-2100	108-2100	108-2100	108-2100	108-2100	108-2100
0.450	11.49	108-2100	108-2100	108-2100	108-2100	108-2100	108-2100
0.475	12.135	108-2100	108-2100	108-2100	108-2100	108-2100	108-2100
0.500	12.78	108-2100	108-2100	108-2100	108-2100	108-2100	108-2100
0.525	13.425	108-2100	108-2100	108-2100	108-2100	108-2100	108-2100
0.550	14.07	108-2100	108-2100	108-2100	108-2100	108-2100	108-2100
0.575	14.715	108-2100	108-2100	108-2100	108-2100	108-2100	108-2100
0.600	15.36	108-2100	108-2100	108-2100	108-2100	108-2100	108-2100
0.625	16.005	108-2100	108-2100	108-2100	108-2100	108-2100	108-2100
0.650	16.65	108-2100	108-2100	108-2100	108-2100	108-2100	108-2100
0.675	17.295	108-2100	108-2100	108-2100	108-2100	108-2100	108-2100
0.700	17.94	108-2100	108-2100	108-2100	108-2100	108-2100	108-2100
0.725	18.585	108-2100	108-2100	108-2100	108-2100	108-2100	108-2100
0.750	19.23	108-2100	108-2100	108-2100	108-2100	108-2100	108-2100
0.775	19.875	108-2100	108-2100	108-2100	108-2100	108-2100	108-2100
0.800	20.52	108-2100	108-2100	108-2100	108-2100	108-2100	108-2100
0.825	21.165	108-2100	108-2100	108-2100	108-2100	108-2100	108-2100
0.850	21.81	108-2100	108-2100	108-2100	108-2100	108-2100	108-2100
0.875	22.455	108-2100	108-2100	108-2100	108-2100	108-2100	108-2100
0.900	23.1	108-2100	108-2100	108-2100	108-2100	108-2100	108-2100
0.925	23.745	108-2100	108-2100	108-2100	108-2100	108-2100	108-2100
0.950	24.39	108-2100	108-2100	108-2100	108-2100	108-2100	108-2100
0.975	25.035	108-2100	108-2100	108-2100	108-2100	108-2100	108-2100
1.000	25.68	108-2100	108-2100	108-2100	108-2100	108-2100	108-2100