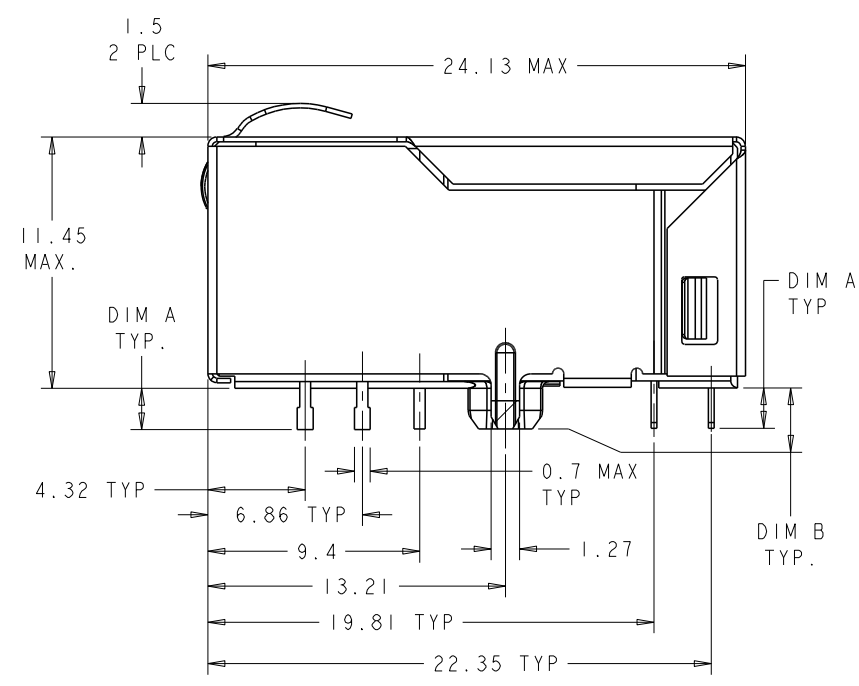
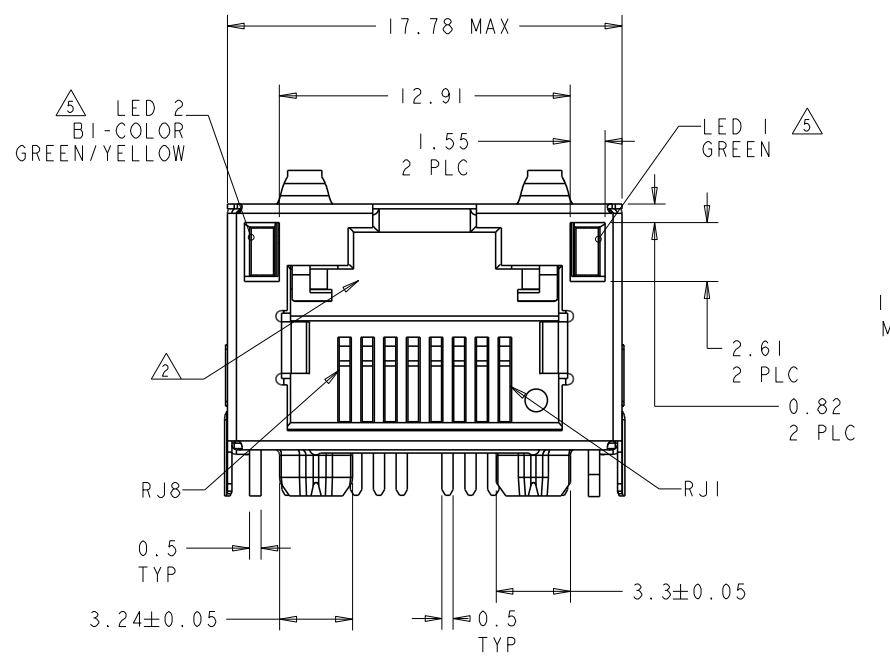
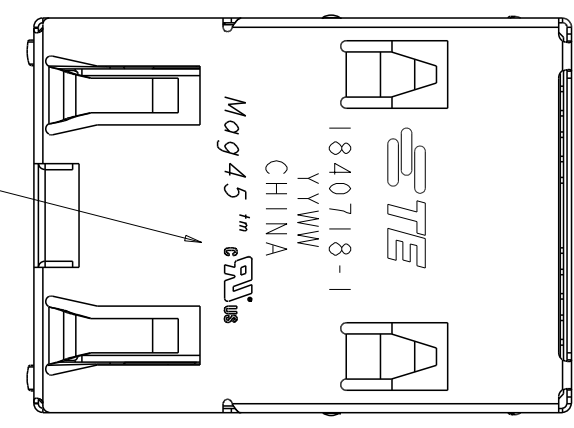
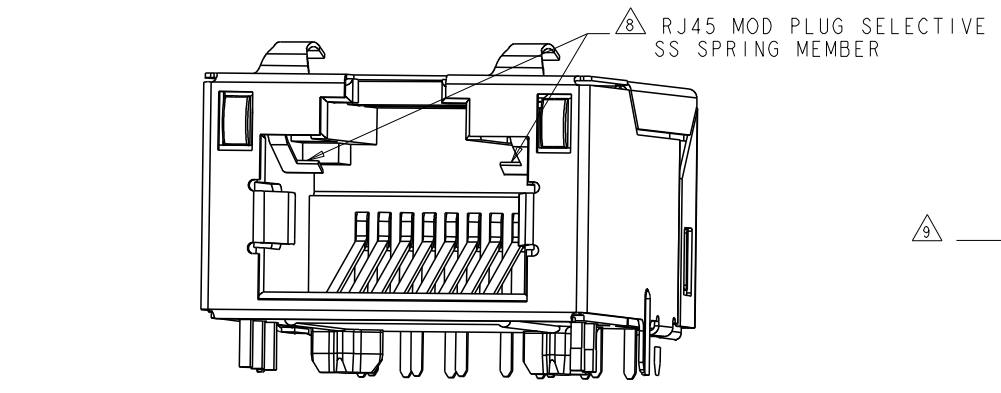


LOC		DIST		REVISIONS			
AA	00	P	LYR	DESCRIPTION	DATE	DWN	APPD
		J		PER ECO-12-015694	17DEC2012	TY	KZ



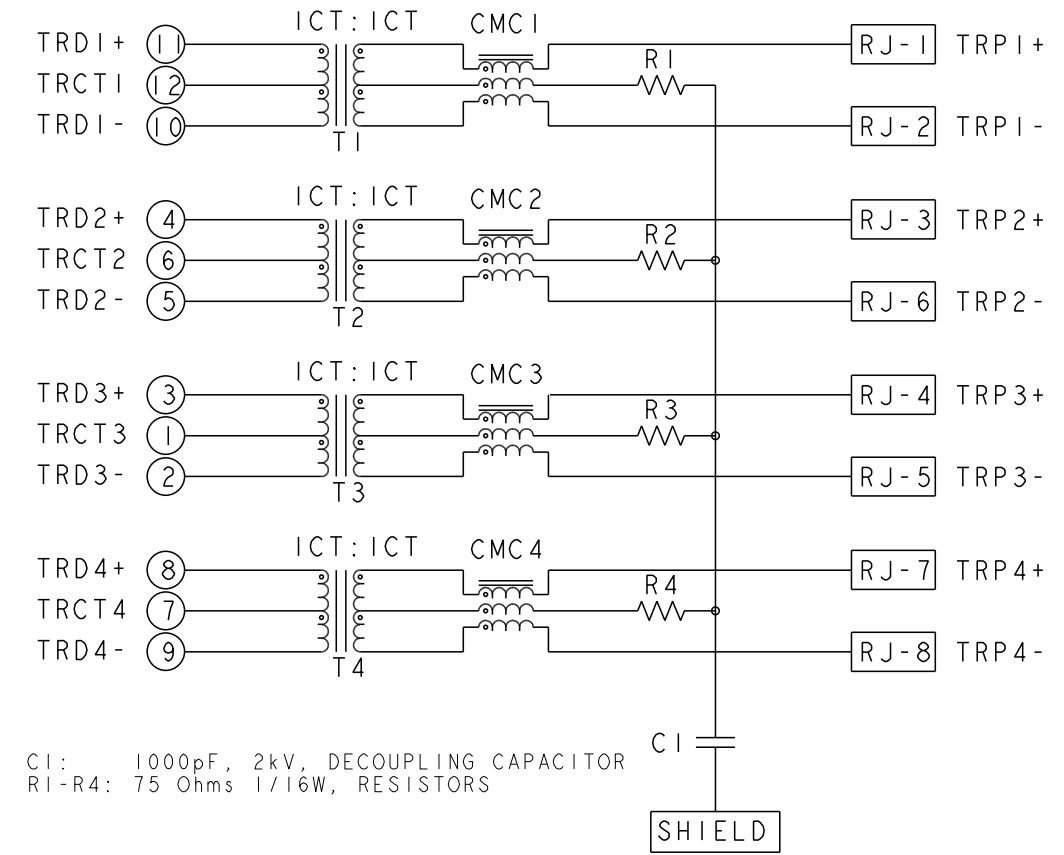
- 1 MATERIALS:
 -HOUSING: HIGH TEMPERATURE NYLON, BLACK, UL 94V-0
 -SHIELD: 0.20mm THICK, BRASS PREPLATED WITH 0.76 um MIN SEMI-BRIGHT NICKEL; POST-DIPPED WITH 2um MIN SAC 305 ALLOY LEAD FREE SOLDER (TIN PRIMARY, 3% SILVER, 0.5% COPPER)
 -CONTACT TAILS: 0.25mm THICK, PHOSPHOR BRONZE, 1.27 um MIN OVERALL NICKEL UNDERPLATE, 3um MIN TIN PLATE
 -MOD JACK CONTACTS: 0.25mm THICK, PHOSPHOR BRONZE, 1.27 um MIN OVERALL NICKEL UNDERPLATE, WITH 0.76um MIN LOCALIZED GOLD PLATE AT PLUG INTERFACE
 -LIGHT EMITTING DIODE (LED): DIFFUSED EPOXY LENS, 0.5mm X 0.5mm CARBON STEEL WIREFRAME LEADS PREPLATED WITH 2.03um MIN. SILVER PLATE OVER 1.02um MIN. NICKEL OVER 1.02um MIN. COPPER UNDERPLATE; LEADS POST-PLATED WITH 3.05um MIN. MATTE TIN.
 -LIGHT PIPE: POLYETHER SULFONE
- 2 RJ45 JACK CAVITY CONFORMS TO FCC RULES AND REGULATIONS PART 68, SUB-PART F.
- 3 MAGNETICS:
 -APPLICATION: 10/100/1000 BASE-T
 -IMPEDANCE: 100 OHMS
 -TURNS RATIO (CHIP:CABLE): 1:1 ALL FOUR PAIRS
 -OPEN CIRCUIT INDUCTANCE (OCL): 350 uH (MIN) @100KHz, 0.1 VRMS WITH 8 mA DC BIAS FROM 0°C TO +70°C, ALL FOUR PAIRS
 -ALL FOUR PAIRS BI-DIRECTIONAL

FREQUENCY	INSERTION LOSS (dB MAX)	RETURN LOSS (dB MIN) CIRCUIT IMPEDANCE = 100 OHMS ±15%	COMMON MODE REJECTION RATIO (dB MIN)	CROSSTALK ATTENUATION (dB MIN)
0.5 MHz - 40.0 MHz	1.1	18.0	30	35
40.1 MHz - 100.0 MHz		12-20 log(f/80) f IS FREQUENCY IN MHz		33-20 log(f/50) f IS FREQUENCY IN MHz

ALL MAGNETIC ELECTRICAL CHARACTERISTICS RATED @ 25°C

- ISOLATION VOLTAGE: COMPLIES WITH IEEE802.3.2002, PARA 40.6.1.1, ITEM a AND b
- 4 OPERATING TEMPERATURE: FROM 0°C TO +70°C.
- 5 LED IS DRIVEN WITH CONSTANT CURRENT AT APPROX 20mA.
 LED COLOR: DOMINANT WAVELENGTH (λD): GREEN 568 nm TYP. at IF=20mA
 FORWARD VOLTAGE (VF): GREEN 2.2V TYP. at IF=20mA
 DOMINANT WAVELENGTH (λD): YELLOW 588 nm TYP. at IF=20mA
 FORWARD VOLTAGE (VF): YELLOW 2.1V TYP. at IF=20mA
 DOMINANT WAVELENGTH (λD): ORANGE 605 nm TYP. at IF=20mA
 FORWARD VOLTAGE (VF): ORANGE 2.1V TYP. at IF=20mA
- 6 LED WILL EMULATE "YELLOW" LIGHT WHEN BOTH GREEN AND ORANGE DIODES ARE DRIVEN AT CONSTANT CURRENT (20mA RECOMMENDED) TO INDICATE THE THIRD COLOR STATE.
 WARNING: THIS FEATURE WAS DEVELOPED FOR TYPICAL PLUG INSERTION FORCES.
 EXCESSIVE INSERTION FORCE MAY OVERCOME THE SELECTIVE FEATURES AND DAMAGE THE CONNECTOR.
- 7 ALL DIMENSIONS ARE NOMINAL UNLESS OTHERWISE NOTED.
- 8 RJ45 MOD PLUG SELECTIVE - THIS CONNECTOR UTILIZES STAINLESS STEEL SPRING MEMBER WHICH PREVENTS THE INSERTION OF A RJ11 (6 POSITION) PLUG INTO THE JACK PORT, WHILE ALLOWING A RJ45 (8 POSITION) PLUG TO MATE FREELY.
 WARNING: THIS FEATURE WAS DEVELOPED FOR TYPICAL PLUG INSERTION FORCES.
 EXCESSIVE INSERTION FORCE MAY OVERCOME THE SELECTIVE FEATURES AND DAMAGE THE CONNECTOR.
- 9 TYCO ELECTRONICS LOGO, PART NUMBER, DATE CODE, PLACE OF ORIGIN, AGENCY LOGO TO BE MARKED IN APPROXIMATE LOCATION AS SHOWN.
- 10 APPLIES ONLY TO 1840718-3, -4, 1-1.
- 11 1840718-1 SHOWN UNLESS OTHERWISE SPECIFIED.
12. THESE PARTS ARE COMPLIANT WITH BOTH WAVE SOLDERING PROCESS PEAK SOLDERING TEMPERATURE 260°C MAX, 10 SECONDS MAX; AND IR REFLOW SOLDERING PROCESS PEAK SOLDERING TEMPERATURE 260°C MAX DURATION TIME 10 SECONDS MAX, OVER 230°C WITHIN 40-60 SECONDS;

IG18 GIGABIT CIRCUIT



WAVE	G/O	G	NO	TOP ONLY	3.3	3.18	1-1840718-2
WAVE	G/O	G	YES	TOP AND SIDES	3.3	3.18	1-1840718-1
WAVE	G/O	G	NO	NO	3.30	3.18	1-1840718-0
WAVE	G/Y	G	YES	TOP ONLY	2.35	2.35	1840718-9
WAVE	G/Y	G	YES	TOP ONLY	3.3	3.18	1840718-8
WAVE	G/O	Y	YES	TOP ONLY	3.3	3.18	1840718-7
WAVE	G/O	Y	NO	NO	3.3	3.18	1840718-6
REFLOW	G/O	Y	YES	NO	1.8	1.8	1840718-5
WAVE	G/O	Y	YES	TOP AND SIDES	3.3	3.18	1840718-4
REFLOW	G/O	Y	YES	TOP AND SIDES	1.8	1.8	1840718-3
REFLOW	G/O	Y	YES	TOP ONLY	1.8	1.8	1840718-2
REFLOW	G/Y	G	YES	TOP ONLY	1.8	1.8	1840718-1
SOLDER PROCESS	LED 2	LED 1	RJ11 SELECTIVE CAPABILITY	GROUND TABS	DIM B	DIM A	PART NO.

THIS DRAWING IS A CONTROLLED DOCUMENT.

DIMENSIONS: mm

TOLERANCES UNLESS OTHERWISE SPECIFIED:

0 PLC	±0.25	
1 PLC	±0.25	
2 PLC	±0.25	
3 PLC	±0.25	
4 PLC	±0.25	

ANGLES: ±0.5°

MATERIAL:

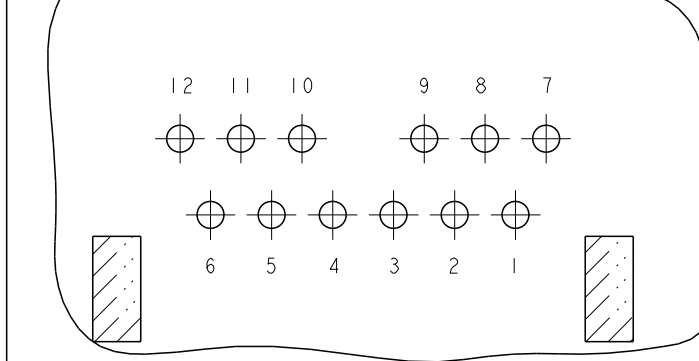
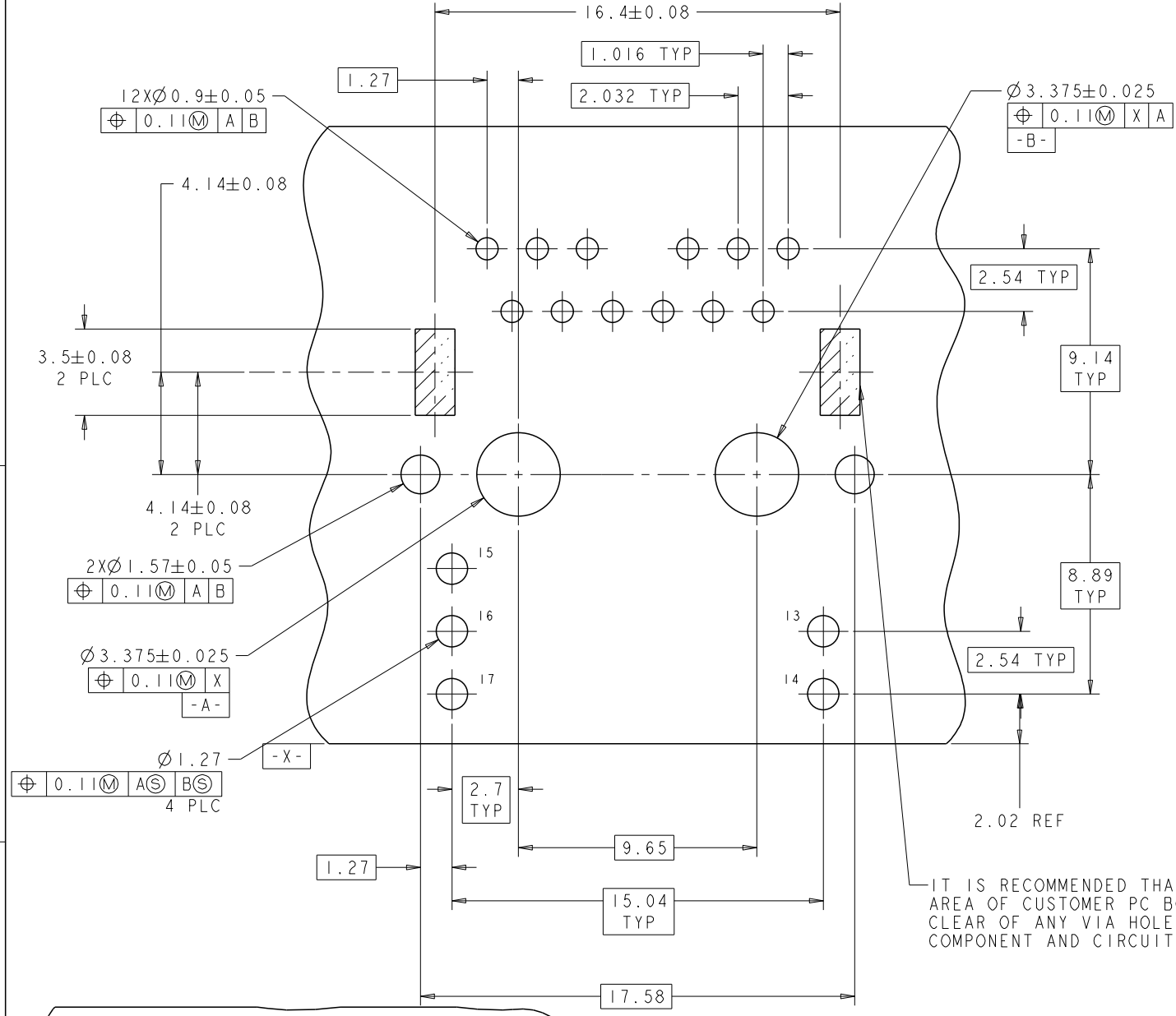
FINISH:

OWN: TOWER YU 21APR2006
 CHG: KEITH ZHU 21APR2006
 APPD: TEDDY XLONG 21APR2006

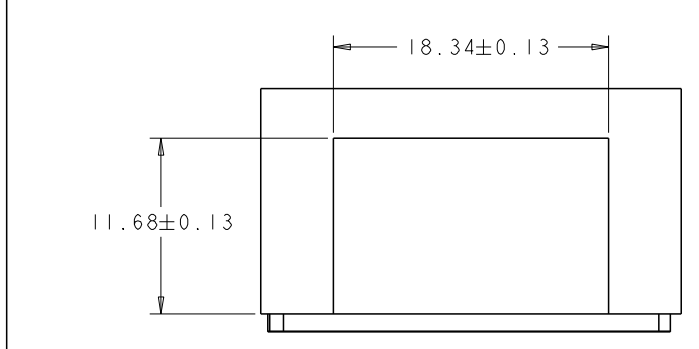
NAME: IXI MAG45(TM), MODULAR JACK, IG18 SERIES GIGABIT CIRCUIT SHIELDED, LEDS, SELECTIVE CAPABILITY

SIZE: A1
 CAGE CODE: 100779
 DRAWING NO: 1840718
 RESTRICTED TO: J

SCALE: NTS
 SHEET 1 OF 2
 REV J

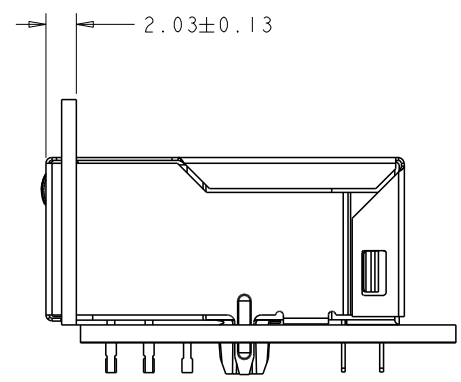


PIN DESIGNATIONS

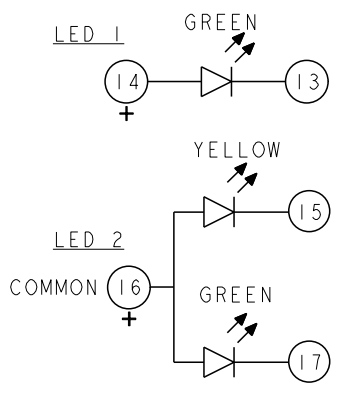


SUGGESTED PANEL OPENING

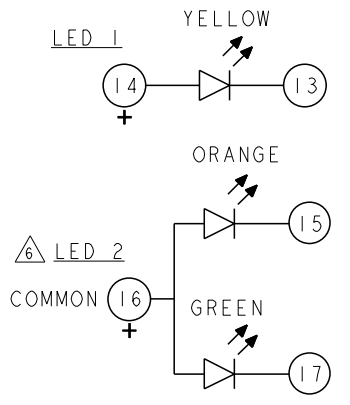
SUGGESTED PCB LAYOUT (COMPONENT SIDE)



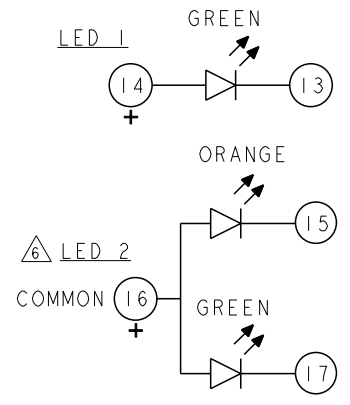
LOC	DIST	REV	DESCRIPTION	DATE	DWN	APPD
AA	00		SEE SHEET 1			



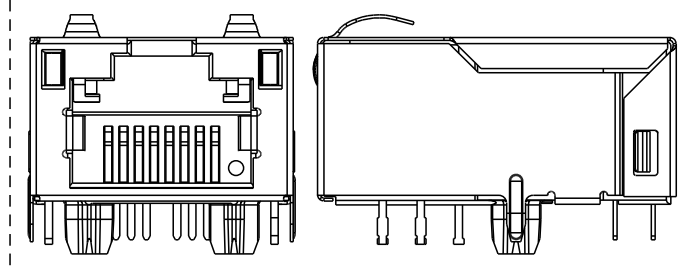
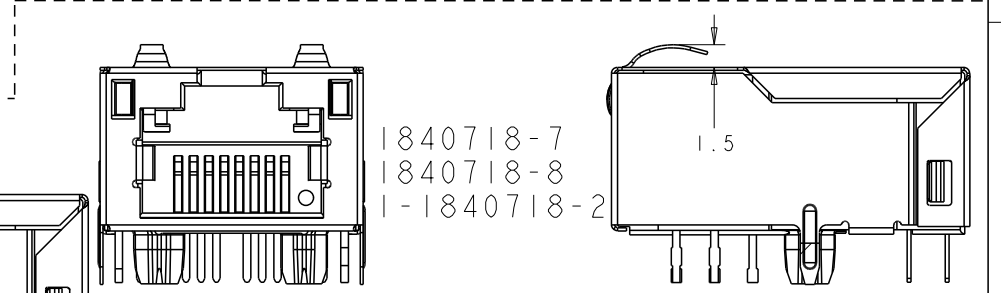
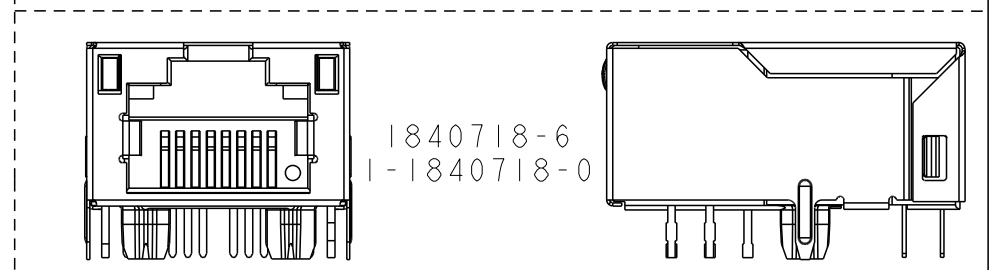
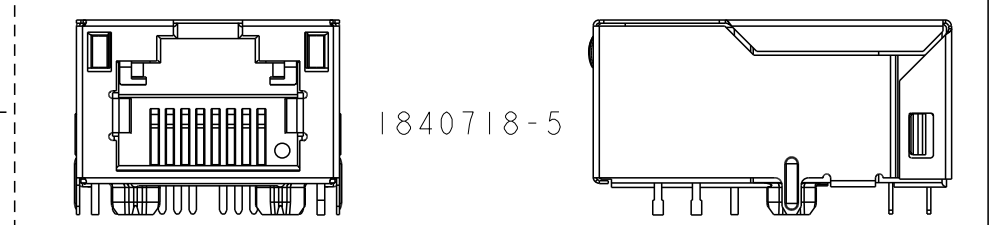
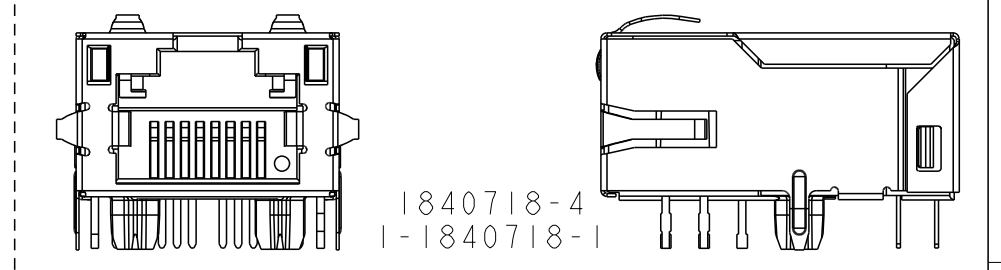
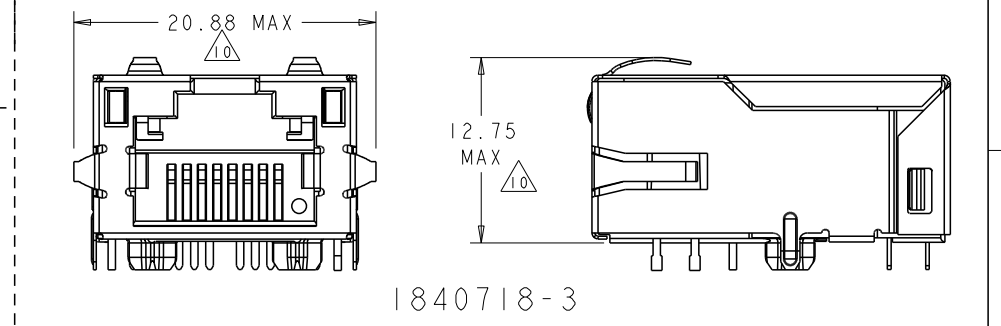
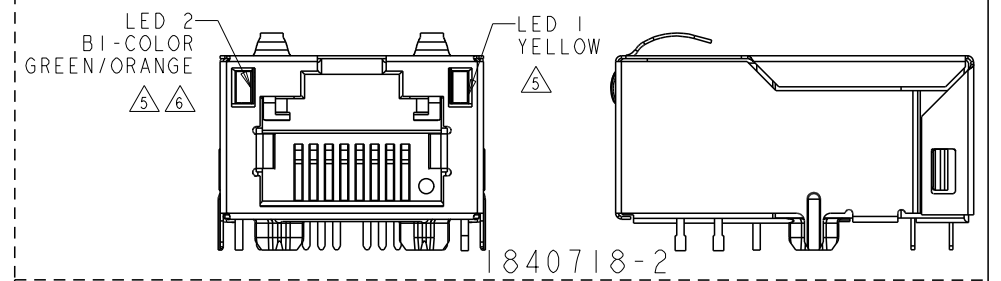
LED LEADS LAYOUT FOR
 1840718-1
 1840718-8
 1840718-9



LED LEADS LAYOUT FOR
 1840718-2
 1840718-3
 1840718-4
 1840718-5
 1840718-6
 1840718-7



LED LEADS LAYOUT FOR
 1-1840718-0
 1-1840781-1
 1-1840781-2



1840718-9

THIS DRAWING IS A CONTROLLED DOCUMENT.		DWN: TOWER YU 21APR2006		NAME: (X) MAG45(TM), MODULAR JACK, 1G18 SERIES GIGABIT CIRCUIT SHIELDED, LEDS, SELECTIVE CAPABILITY	
DIMENSIONS: mm		CHK: KEITH ZHU 21APR2006		SIZE: A1	
TOOLERANCES UNLESS OTHERWISE SPECIFIED:		APPD: TEDDY XILONG 21APR2006		CAGE CODE: 100779	
0 PLC	±0.25	PRODUCT SPEC: 108-2207		DRAWING NO: 1840718	
1 PLC	±0.25	APPLICATION SPEC:		SCALE: NTS	
2 PLC	±0.25	MATERIAL:		SHEET 2 OF 2	
3 PLC	±0.25	FINISH:		REV J	
4 PLC	±0.25	MATERIAL:		RESTRICTED TO:	
ANGLES	±0.25	WEIGHT:		CUSTOMER DRAWING	