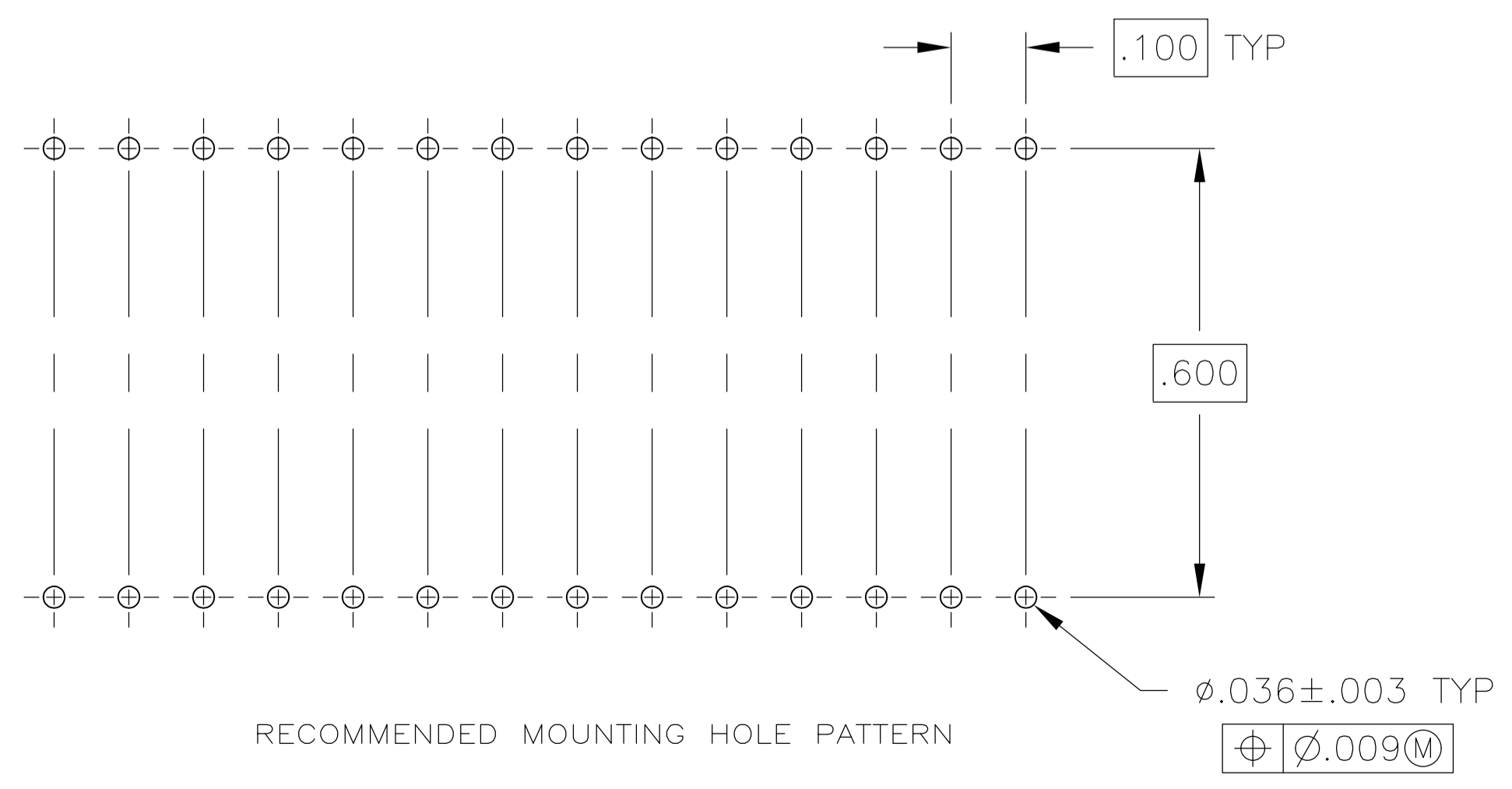
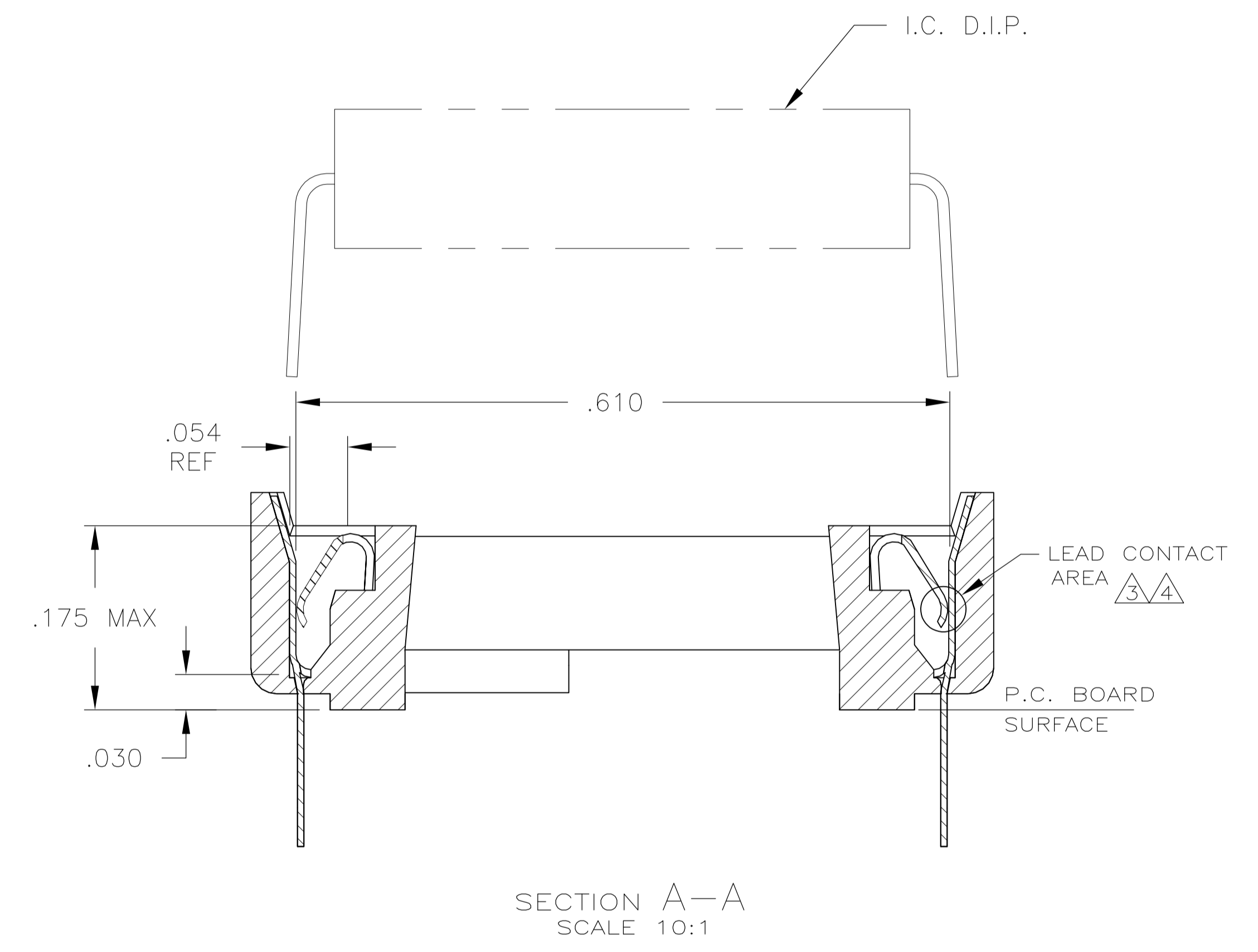
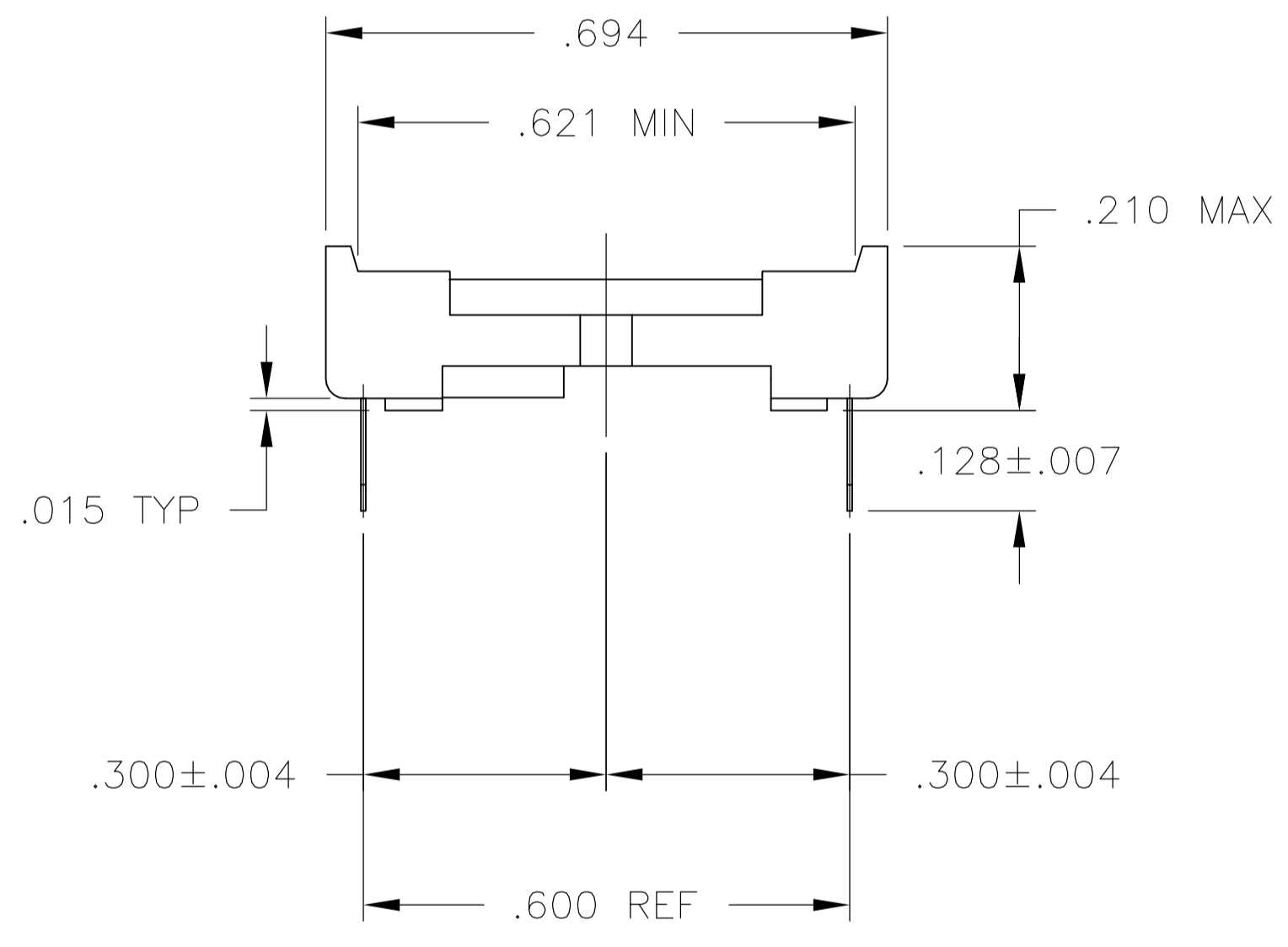
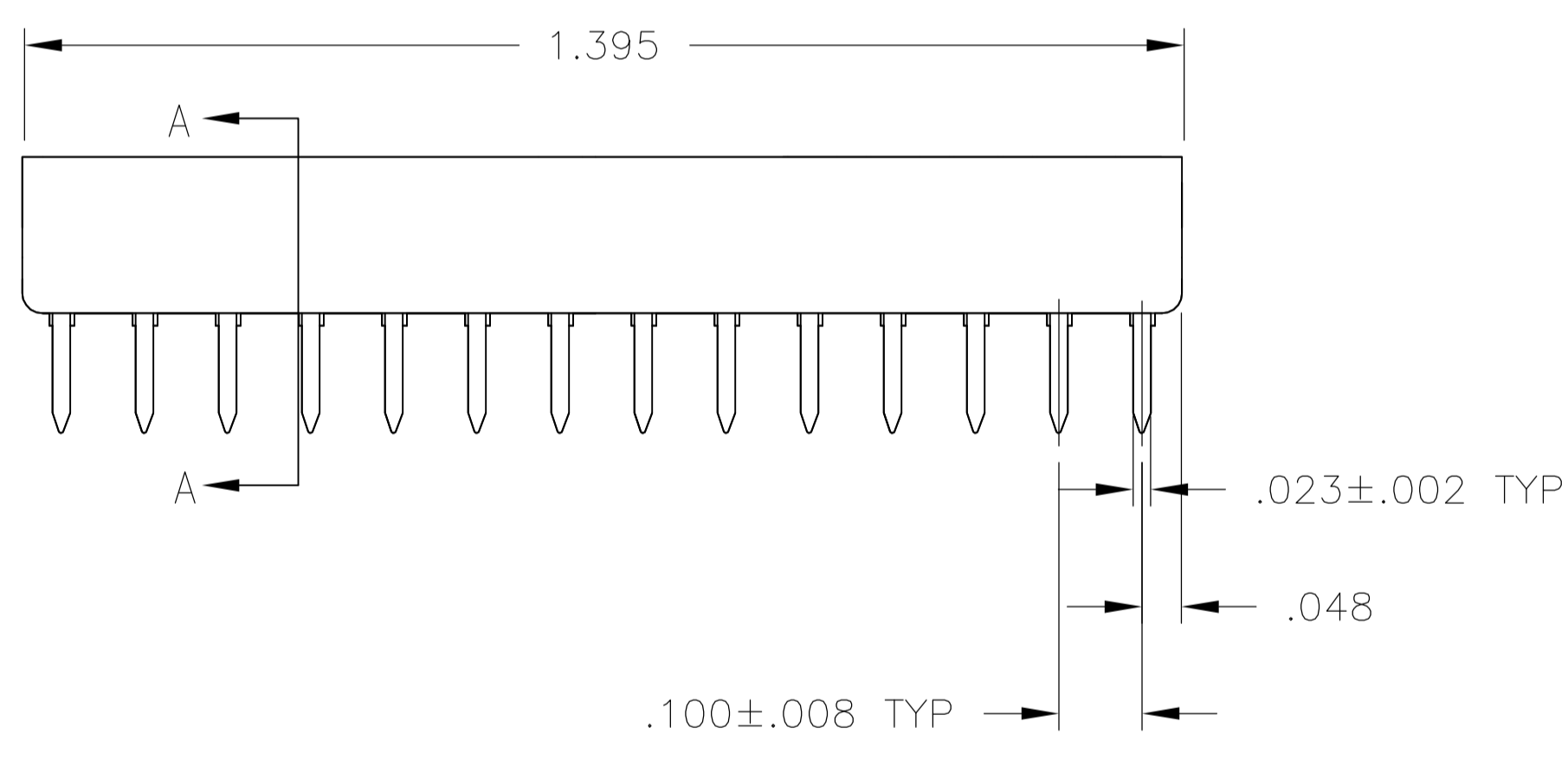
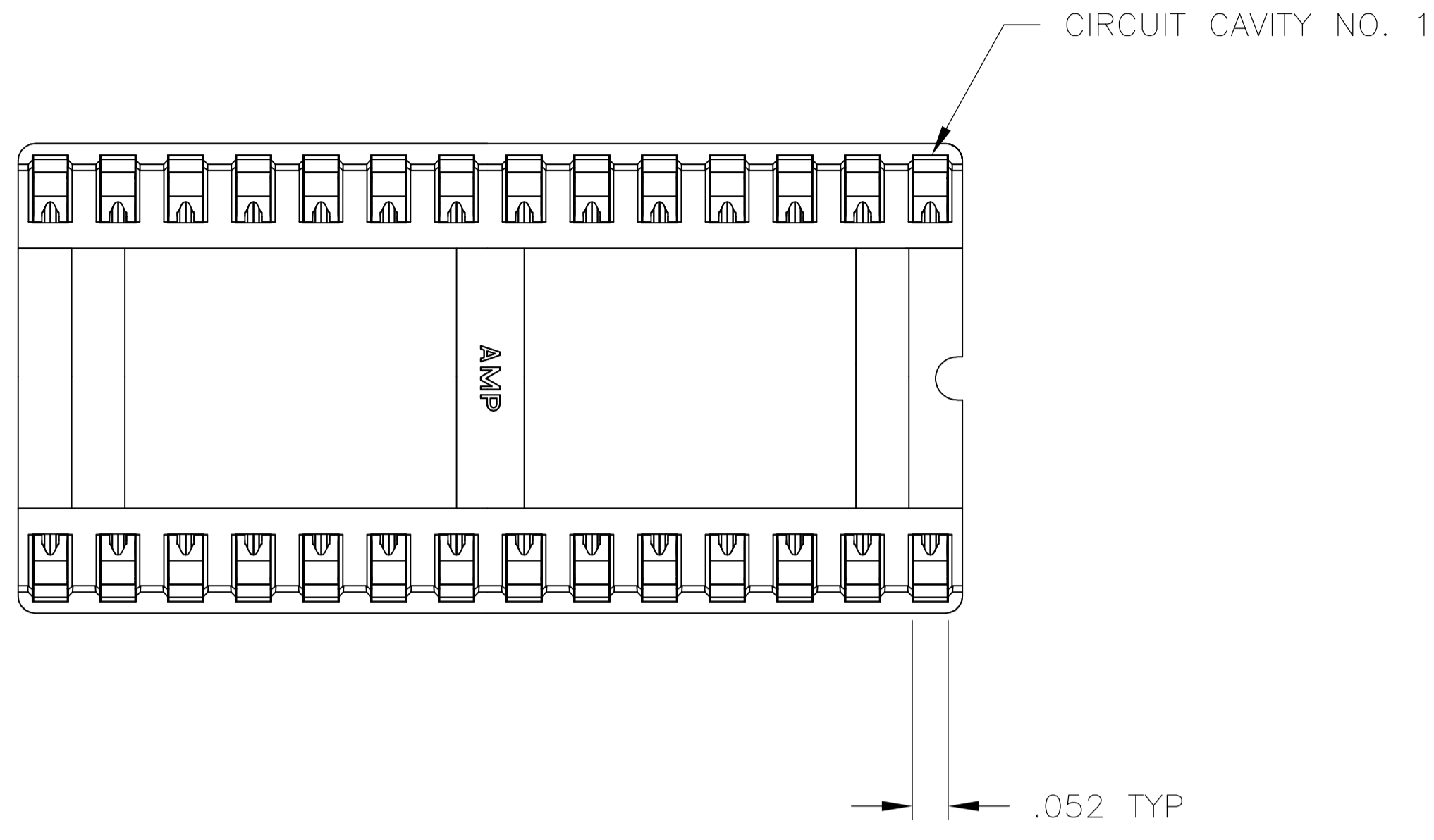


LOC		DIST		REVISIONS			
AD	0	REV	DESCRIPTION	DATE	BY	CHK	APPV
AA1		REVISED PER	ECO-11-004917	11MAR11	RK	HMR	

- RECEPTACLE ACCEPTS A .008-.014 THICK I.C. LEAD.
- TUBE LOADED FOR AUTOMATIC INSERTION.
- TWO .000030 MIN THK. GOLD STRIPES IN CONTACT AREA WITH TIN-LEAD (93/7) ON SOLDER LEGS, BALANCE OF CONTACT NICKEL PLATED.
- TWO .000015 MIN THK. GOLD STRIPES IN CONTACT AREA WITH TIN-LEAD (93/7) ON SOLDER LEGS, BALANCE OF CONTACT NICKEL PLATED.
- SEE RESTRICTED CUSTOMER DRAWING 3-641605-1, FOR PART NUMBERS 3-641605-1, & 3-641605-3.
- SEE RESTRICTED CUSTOMER DRAWING 4-641605-3.



REV	DESCRIPTION	DATE	BY	CHK	APPV
6					
5					
4					
3					
2					
1					

REV	DESCRIPTION	DATE	BY	CHK	APPV
6					
5					
4					
3					
2					
1					

REV	DESCRIPTION	DATE	BY	CHK	APPV
6					
5					
4					
3					
2					
1					

THIS DRAWING IS A CONTROLLED DOCUMENT.

DIMENSIONS: INCHES	TOLERANCES UNLESS OTHERWISE SPECIFIED:	0 PLC ± -	1 PLC ± -	2 PLC ± -	3 PLC ± .005	4 PLC ± -	ANGLES ± 0°-30°
--------------------	--	-----------	-----------	-----------	--------------	-----------	-----------------

MATERIAL: SEE TABLE

FINISH: SEE TABLE

REV	BY	DATE	CHK	APPV
19	BROWN	19OCT00		
18	WYNKOOP	19OCT00		
17	WYNKOOP	19OCT00		

NAME: SOCKET ASSY, DIP, LADDER, 28 POS, DIPLOMATE™ DL

PRODUCT SPEC: 108-1066

APPLICATION SPEC: 114-1049

WEIGHT: -

SIZE: A1

CAGE CODE: 00779

DRAWING NO: 641605

RESTRICTED TO: -