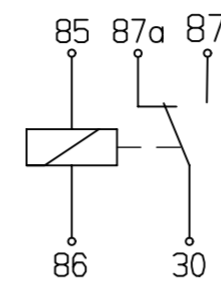
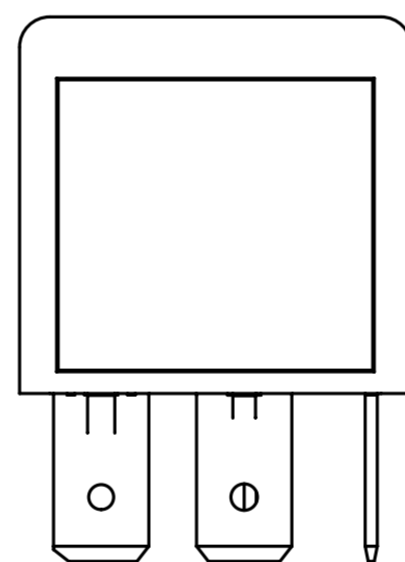
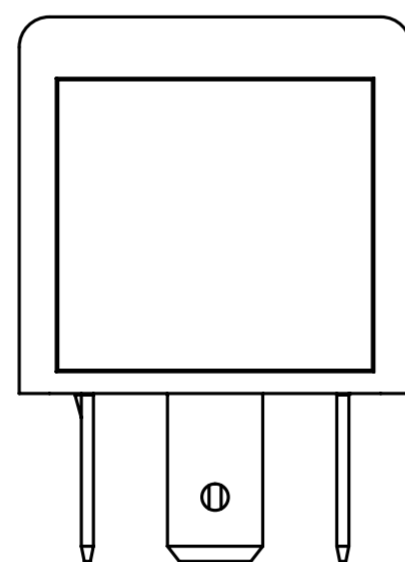
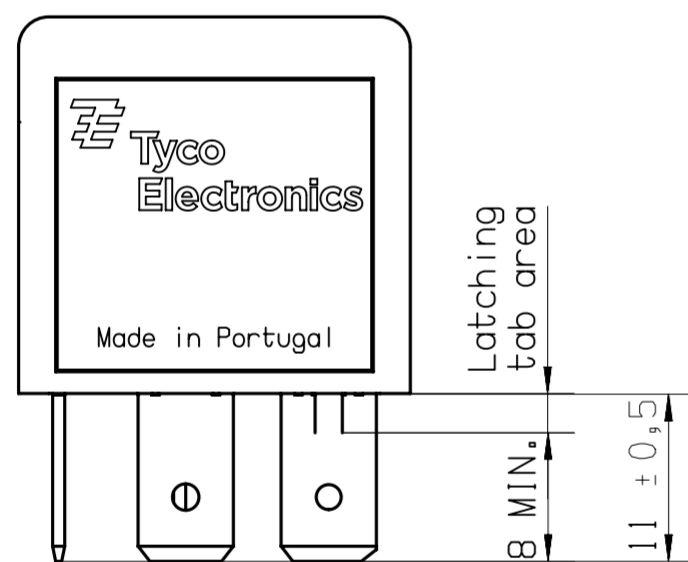


CIRCUIT DIAGRAM

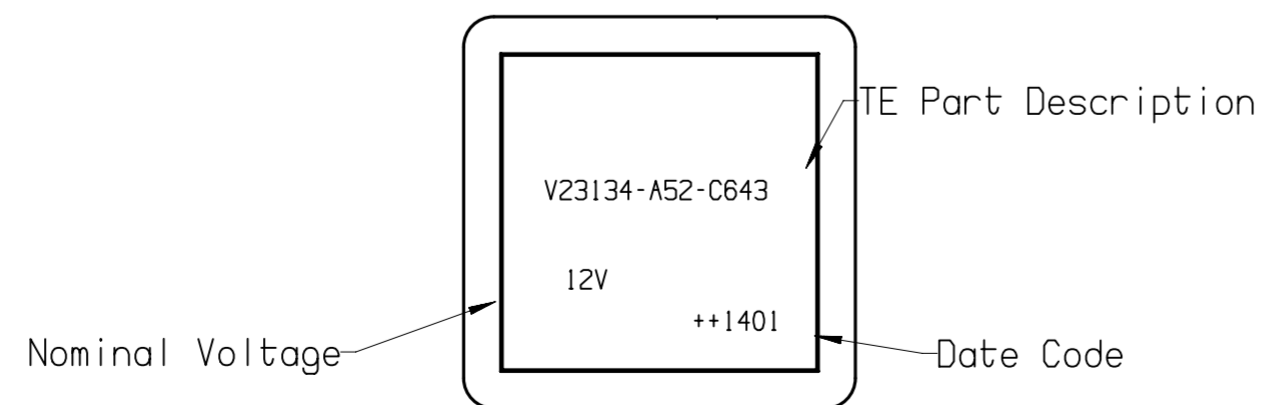


Dustproof;
 Protection class IP 54 TO IEC 529 (DIN EN 60 529)
 with mounting bracket.
 Terminals shape similar to ISO 8092-1
 Coil and Load 6.3 mm x 0.8 mm

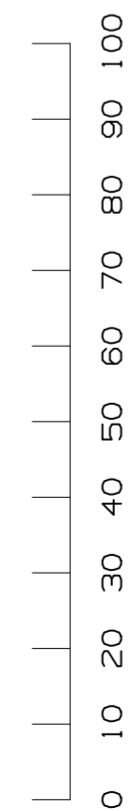
PART	MATERIAL	COLOUR
Cover	PA 66 GF 25	Black sim. to RAL 9005
Base	PA 66 GF 25	Black sim. to RAL 9005
Coil Terminals 85 and 86	CuSn	Pre-tinned Sn
Load terminals 30, 87 and 87a	E-Cu	Pre-tinned Sn



TOP VIEW (180° rotated)



TCPN	REV	PART DESCRIPTION
2-1393302-2	A	V23134-A0052-C643



PROPRIETARY THE REPRODUCTION, TRANSMISSION OR USE OF THIS DOCUMENT OR IT'S CONTENTS IS NOT PERMITTED WITHOUT EXPRESSED WRITTEN AUTHORITY. OFFENDERS WILL BE LIABLE FOR ALL DAMAGES. ALL RIGHTS, INCLUDING RIGHTS CREATED BY REGISTERED PATENT(S) GRANTED FOR A UTILITY MODEL OR DESIGN, ARE RESERVED.		CHANGES TO THIS DRAWING MUST BE DONE ONLY IN CAD	PAPER SIZE A2
APPLICABLE SPEC.:		FINISH	
DIMENSIONS IN MM		DIMENSIONS APPLY	PLATING
TOLERANCE UNLESS SPECIFIED OTHERWISE		SCALE 2:1	WEIGHT Ca.29.8g
MATERIAL		PART NAME	
DWN. 14FEB2017 L.Sandoval APP. REV.		POWER F RELAY CHANGE OVER 12V	
LOCATION PE EVORA		DWG NO.	
STE connectivity		C - V23134-A0052-C643	
A Initial Version 14FEB2017 LSan REV. CHANGE ORDER DATE APP.		SHT. 1 OF 1	