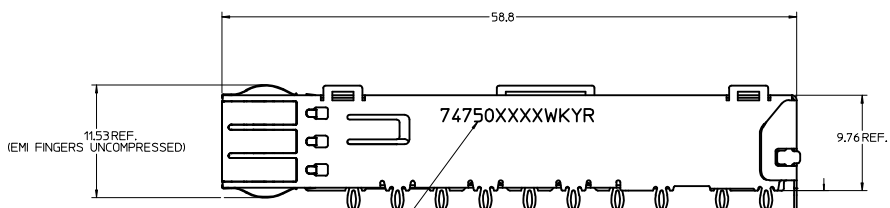
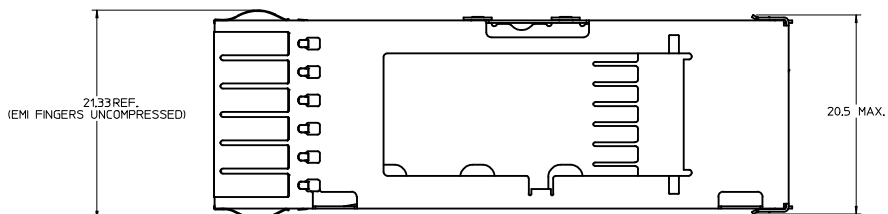


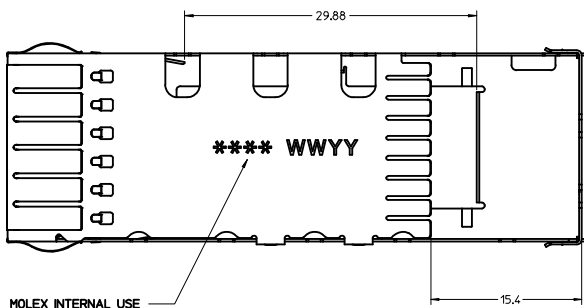
CAGE DETAILS



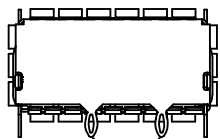
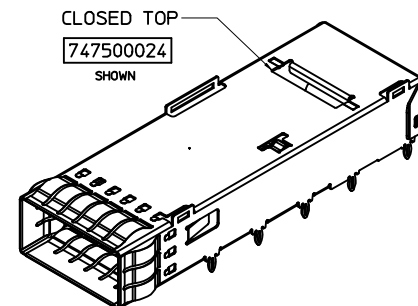
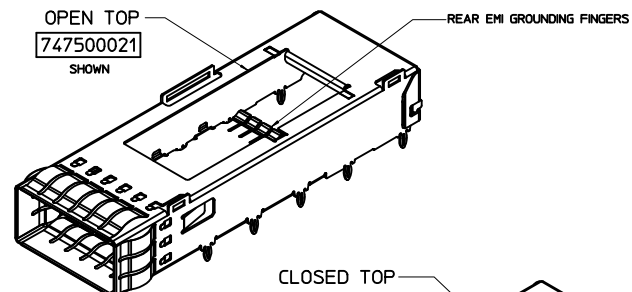
DIM A TYP.
(SEE SHEET 3)

PART NO. AND WEEK/YEAR DATE CODE TO BE PRINTED ON
SIDE OF COMPLETED CAGE ASSEMBLY APPROXIMATELY AS SHOWN.
SEE TABLE BELOW FOR DATE CODE INFORMATION.

WEEK/YEAR DATE CODE TABLE	
WEEK	01 THRU 52 EXAMPLE: 01 = FIRST WEEK OF YEAR 52 = LAST WEEK OF YEAR
YEAR	10, 11, 12 ETC. EXAMPLE: YEAR 2010 = 10



MOLEX INTERNAL USE



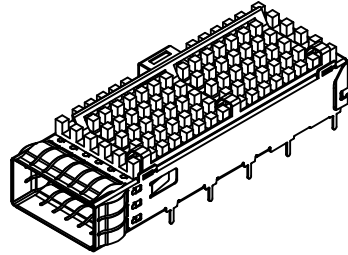
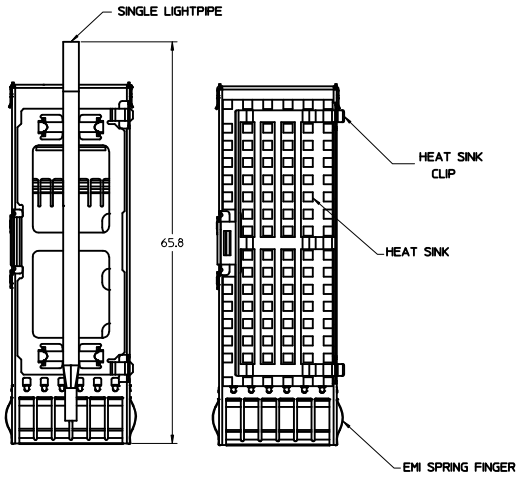
REAR PINS ARE OPTIONAL
(SEE CHART)

NOTES:

- PRESS FIT LEGS 2.28 / 3.05 mm LONG
- SOLDER POST LEGS 1.90 / 2.90 mm LONG
- SINGLE SIDED BOARD THICKNESS
NOMINAL: 1.60
MINIMUM: 1.44
BELLY TO BELLY BOARD THICKNESS
NOMINAL: 2.30
MINIMUM: 2.07
- MATERIAL: COPPER ALLOY (PLATED PRIOR TO CUTTING AND FORMING)
CAGE: 0.25 mm THICK COPPER ALLOY, NICKEL PLATED OR TIN
SPRING FINGER: 0.08 mm THICK COPPER ALLOY, NICKEL PLATED
HEAT SINK CLIP: STAINLESS STEEL
LIGHT PIPES: POLYCARBONATE (UL 94-V0 RATED)
HEATSINKS: ANNOXIDIZED ALUMINUM
- REFERENCE DOCUMENTS: PRODUCT SPECIFICATION: QSFP MSA
- CUSTOM HEATSINKS AVAILABLE UPON REQUEST
- QSFP+ ASSEMBLES ALSO AVAILABLE IN 1X2 (74767 SERIES),
1X3 (74768 SERIES), 1X4 (74769 SERIES) AND 1X6 (74771 SERIES).
- PACKAGED IN TRAY.
- NO RoHS EXEMPTIONS.

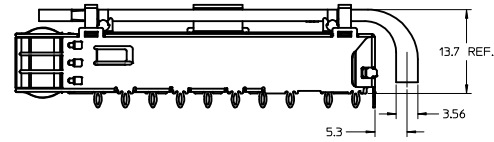
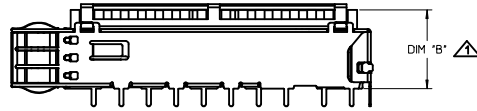
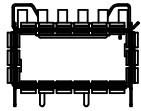
SEE REVISION TABLE EC NO: CPG2013-1899 DRAWN: CHIRSCHE08 CHKD: APPR: K LLOYD	QUALITY SYMBOLS ▽=0 ▽=0 ▽=0	GENERAL TOLERANCES (UNLESS SPECIFIED)		DIMENSION STYLE		SCALE 4:1	DESIGN UNITS METRIC	THIRD ANGLE PROJECTION
		mm	INCH	MM ONLY	DATE			
		4 PLACES	±0.13	±0.005	DATE			QSFP+ CAGE ASSEMBLY WITH SPRING FINGERS
		3 PLACES	±0.25	±0.010	DATE			
		2 PLACES	±0.38	±0.015	DATE			molex
		1 PLACE	±0.51	±0.020	DATE			
		0 PLACE	±0.64	±0.025	DATE			DOCUMENT NO. SD-74750-0021
								SHEET NO. 1 OF 8
								THIS DRAWING CONTAINS INFORMATION THAT IS PROPRIETARY TO MOLEX INCORPORATED AND SHOULD NOT BE USED WITHOUT WRITTEN PERMISSION

CAGE ASSEMBLY OPTIONS

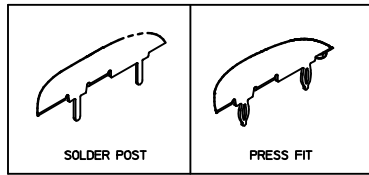


HEATSHINK AND LIGHT PIPE OPTIONS

<p>HEAT SINK ONLY</p>	<p>SINGLE LIGHT PIPE</p> <p>MOLEX P/N: 747500030</p>
<p>DUAL LIGHT PIPE</p> <p>MOLEX P/N: 747500031</p>	



PIN TYPE OPTIONS

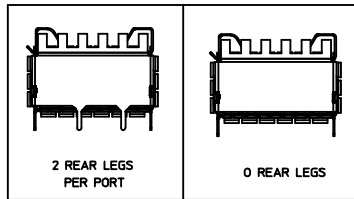


HEATSINK HEIGHT OPTIONS

OVERALL HEATSINK HEIGHT	DIM B
PCI	13.7
SAN	16.0
NET	23.0

HEIGHT OF HEATSINK WITH MODULE INSERTED. DIMENSION MAY BE LESS DUE TO MODULE AND HEATSINK VARIATIONS.

REAR LEG OPTIONS



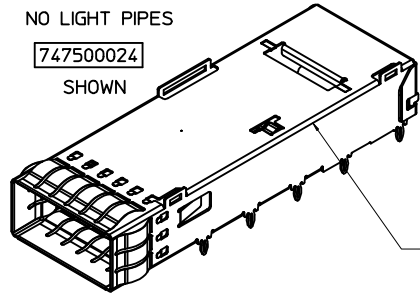
SEE REVISION TABLE EC NO: CPG2013-1899 DRAWN BY: DRWNRCHEN08 CHKD: APPR:KLLOYD DATE: 2012/12/25 2013/01/11	QUALITY SYMBOLS	GENERAL TOLERANCES (UNLESS SPECIFIED)	DIMENSION STYLE	SCALE	DESIGN UNITS	THIRD ANGLE PROJECTION
	▽=0	4 PLACES ± ---	MM ONLY	2.5:1	METRIC	
	▽=0	3 PLACES ± ---	INCH			
	▽=0	2 PLACES ± 0.13				
		1 PLACE ± 0.25				
		0 PLACE ± ---				
		ANGULAR ± 1 °				
		DRAFT WHERE APPLICABLE MUST REMAIN WITHIN DIMENSIONS				
			DRAWN BY: CHIRSCHY	DATE: 2007/07/23	TITLE: QSFP+ CAGE ASSEMBLY WITH SPRING FINGERS	
			CHECKED BY: BRUSSELL	DATE: 2007/07/23		
			APPROVED BY: RMAHMOOD	DATE: 2010/11/01		
			MATERIAL NO.	DOCUMENT NO.		
			SEE SHEET 3	SD-74750-0021		
			THIS DRAWING CONTAINS INFORMATION THAT IS PROPRIETARY TO MOLEX INCORPORATED AND SHOULD NOT BE USED WITHOUT WRITTEN PERMISSION			
						SHEET NO. 2 OF 8

PART NUMBER SELECTION

NO HEATSINKS
NO LIGHT PIPES

747500024

SHOWN

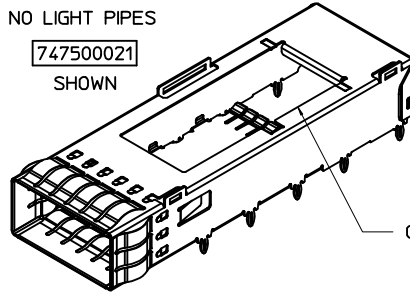


CLOSED TOP

NO HEATSINKS
NO LIGHT PIPES

747500021

SHOWN

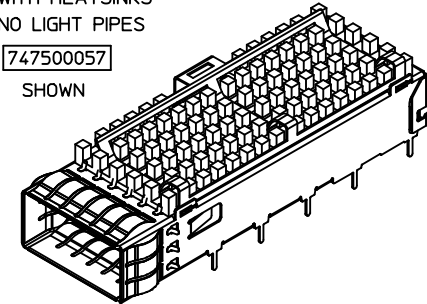


OPEN TOP

WITH HEATSINKS
NO LIGHT PIPES

747500057

SHOWN



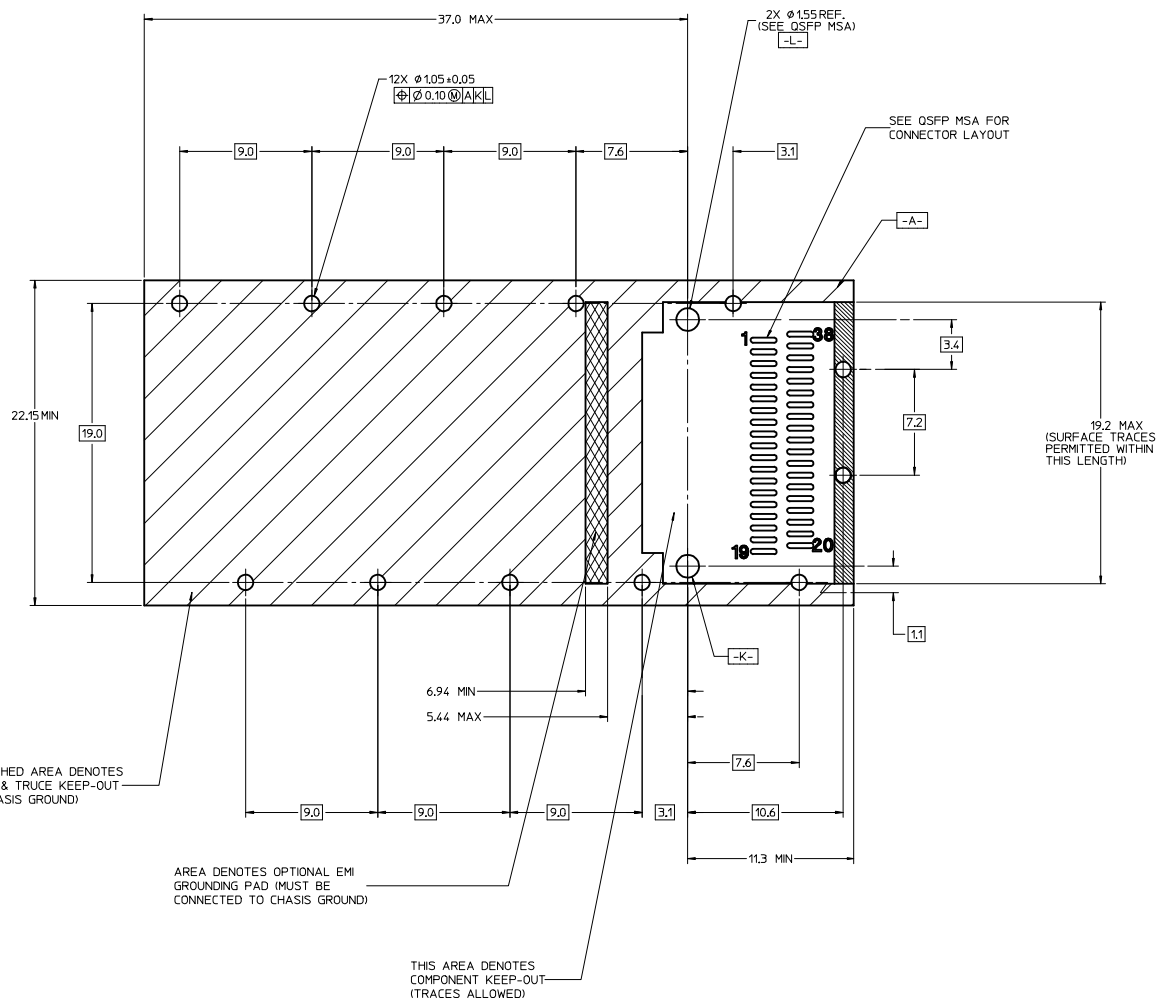
MOLEX P/N		# OF REAR LEGS PER PORT	DIM A	PLATING
PIN TYPE PRESS FIT	PIN TYPE SOLDER POST			
747500024	---	2	2.28	NICKEL
---	747500051	2	1.9	NICKEL
---	747500053	2	1.9	MATTE TIN
---	747500056	2	1.9	BRIGHT TIN

MOLEX P/N		# OF REAR LEGS PER PORT	DIM A	PLATING
PIN TYPE PRESS FIT	PIN TYPE SOLDER POST			
747500012	---	2	3.05	NICKEL
747500021	---	2	2.28	NICKEL
747500023	---	0	2.28	NICKEL
---	747500058	2	2.90	NICKEL

MOLEX P/N		# OF REAR LEGS PER PORT	DIM A	DIM B	PLATING
PIN TYPE PRESS FIT	PIN TYPE SOLDER POST				
---	747500057	2	2.9	13.7	NICKEL
747500040	---	2	2.28	16.0	NICKEL
747500042	---	0	2.28	16.0	NICKEL
747500044	---	2	2.28	13.7	NICKEL
747500046	---	2	2.28	23.0	NICKEL

SEE REVISION TABLE IEC NO: CPG2013-1899 J DRAWN: CHEN08 2010/10/25 CHYK: CHYK APPR: KLOYD 2013/01/11	QUALITY SYMBOLS ▽=0 ▽=0 ▽=0	GENERAL TOLERANCES (UNLESS SPECIFIED)		DIMENSION STYLE		SCALE	DESIGN UNITS	THIRD ANGLE PROJECTION	
				MM ONLY		2.5:1	METRIC		
				ANGULAR ± 1°		DRAWN BY DATE		TITLE	
		DRAFT WHERE APPLICABLE MUST REMAIN WITHIN DIMENSIONS				CHIRSCHY 2007/07/23		QSFP+ CAGE ASSEMBLY WITH SPRING FINGERS	
				CHECKED BY DATE					
				BRUSSELL 2007/07/23					
				APPROVED BY DATE					
				RMAHMOOD 2010/11/01					
				MATERIAL NO.		DOCUMENT NO.			
				SEE SHEET 3		SD-74750-0021			
				SIZE D		SHEET NO. 3 OF 8			
				THIS DRAWING CONTAINS INFORMATION THAT IS PROPRIETARY TO MOLEX INCORPORATED AND SHOULD NOT BE USED WITHOUT WRITTEN PERMISSION					

PCB LAYOUT FOR SINGLE SIDED APPLICATIONS



CROSS HATCHED AREA DENOTES COMPONENT & TRACE KEEP-OUT (EXCEPT CHASSIS GROUND)

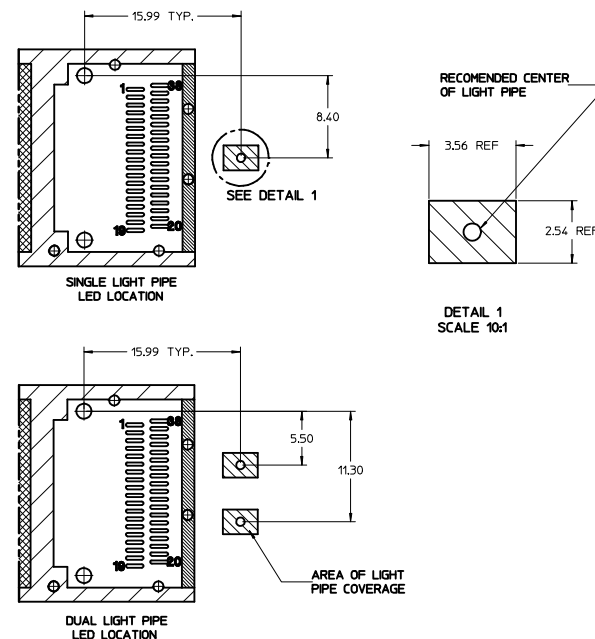
AREA DENOTES OPTIONAL EMI GROUNDING PAD (MUST BE CONNECTED TO CHASSIS GROUND)

THIS AREA DENOTES COMPONENT KEEP-OUT (TRACES ALLOWED)

NOTES:

1. DATUM -A- IS TOP SURFACE OF HOST BOARD PER MSA
2. FINISHED HOLE SIZE (AFTER PLATING)
3. DATUM -K- IS HOST BOARD THRU HOLE #1 TO ACCEPT CONNECTOR GUIDE POST PER MSA
4. DATUM -L- IS HOST BOARD THRU HOLE #2 TO ACCEPT CONNECTOR GUIDE POST PER MSA

FOR CAGE ASSEMBLIES WITH LIGHT PIPES

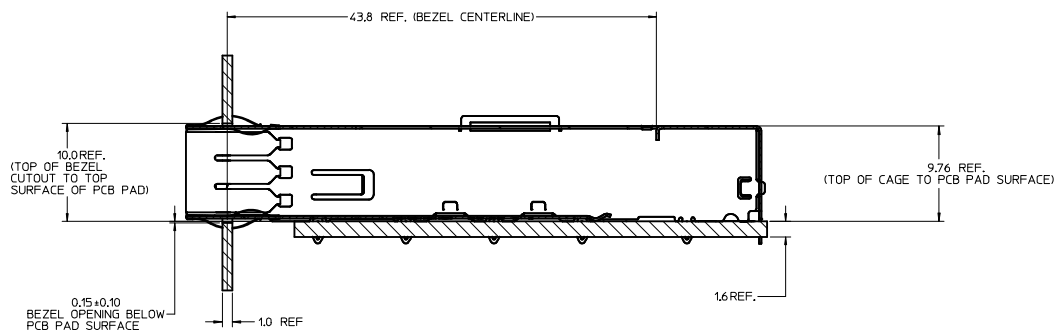
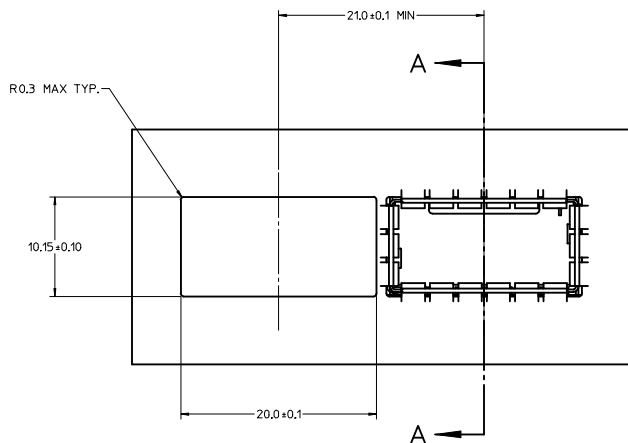


RECOMMENDED CENTER OF LIGHT PIPE

DETAIL 1 SCALE 10:1

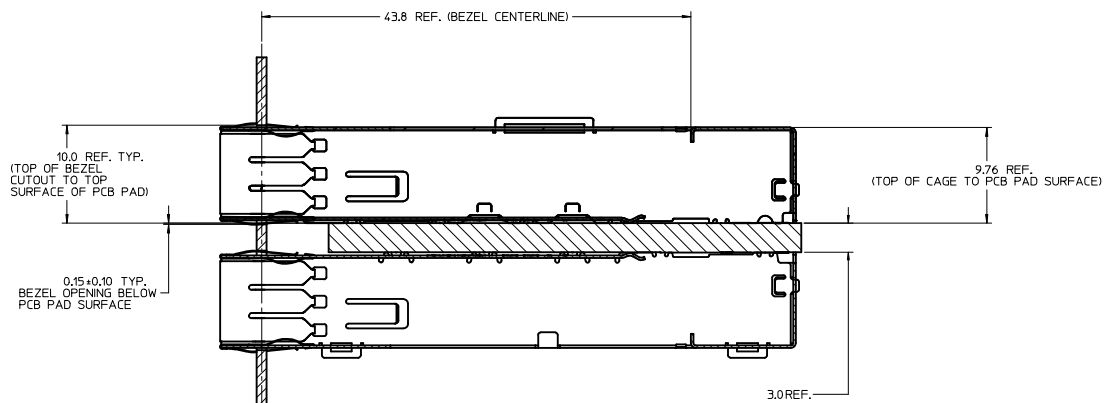
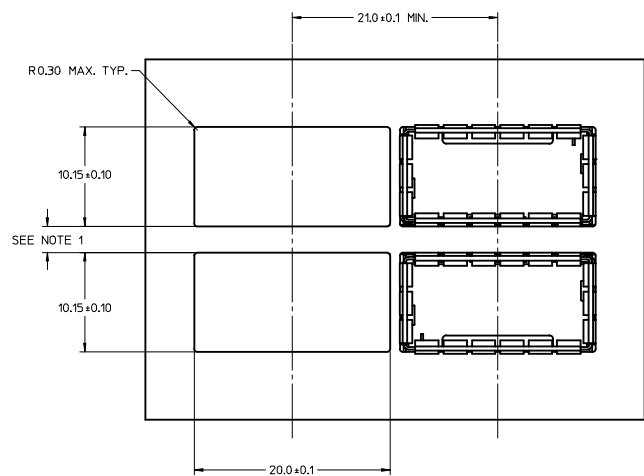
<p>SEE REVISION TABLE EC NO: CPG2013-899 2012/10/25 DRAWN BY: J CHYK: APPROV: K LLOYD 2013/01/11</p>	<p>QUALITY SYMBOLS</p> <p>▽=0 ▽=0 ▽=0</p>		<p>GENERAL TOLERANCES (UNLESS SPECIFIED)</p> <table border="1"> <tr> <th></th> <th>mm</th> <th>INCH</th> </tr> <tr> <td>4 PLACES</td> <td>±0.13</td> <td>±0.005</td> </tr> <tr> <td>3 PLACES</td> <td>±0.25</td> <td>±0.010</td> </tr> <tr> <td>2 PLACES</td> <td>±0.50</td> <td>±0.020</td> </tr> <tr> <td>1 PLACE</td> <td>±1.00</td> <td>±0.040</td> </tr> <tr> <td>0 PLACE</td> <td>±1.50</td> <td>±0.060</td> </tr> </table>			mm	INCH	4 PLACES	±0.13	±0.005	3 PLACES	±0.25	±0.010	2 PLACES	±0.50	±0.020	1 PLACE	±1.00	±0.040	0 PLACE	±1.50	±0.060	<p>DIMENSION STYLE</p> <p>MM ONLY</p>		<p>SCALE</p> <p>1:1</p>		<p>DESIGN UNITS</p> <p>METRIC</p>		<p>THIRD ANGLE PROJECTION</p>	
		mm	INCH																											
	4 PLACES	±0.13	±0.005																											
	3 PLACES	±0.25	±0.010																											
2 PLACES	±0.50	±0.020																												
1 PLACE	±1.00	±0.040																												
0 PLACE	±1.50	±0.060																												
<p>DRAFT WHERE APPLICABLE MUST REMAIN WITHIN DIMENSIONS</p>		<p>ANGULAR ± 1°</p>		<p>MATERIAL NO.</p> <p>SEE SHEET 3</p>		<p>DATE</p> <p>2007/07/23</p>		<p>DATE</p> <p>2007/07/23</p>		<p>TITLE</p> <p>QSFP+ CAGE ASSEMBLY WITH SPRING FINGERS</p>																				
<p>SIZE</p> <p>D</p>		<p>THIS DRAWING CONTAINS INFORMATION THAT IS PROPRIETARY TO MOLEX INCORPORATED AND SHOULD NOT BE USED WITHOUT WRITTEN PERMISSION</p>		<p>DATE</p> <p>2010/11/01</p>		<p>APPROVED BY</p> <p>RAHMOOD</p>		<p>DATE</p> <p>2010/11/01</p>		<p>DOCUMENT NO.</p> <p>SD-74750-0021</p>																				
<p>REV</p>		<p>DESCRIPTION</p>		<p>SHEET NO.</p> <p>4 OF 8</p>		<p>DATE</p>		<p>DATE</p>		<p>SHEET NO.</p> <p>4 OF 8</p>																				

BEZEL AND BOARD POSITION DIMENSIONS
FOR SINGLE SIDE MOUNTING



SECTION A-A
Scale 4:1

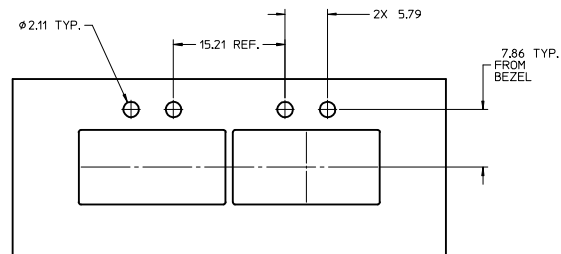
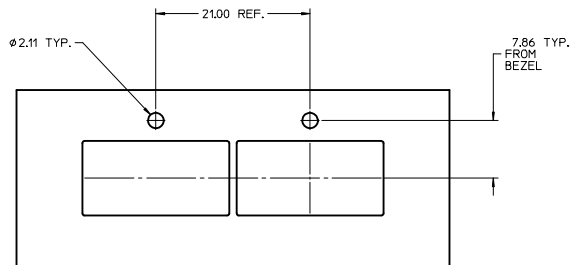
BEZEL AND BOARD POSITION DIMENSIONS
FOR BELLY-TO-BELLY MOUNTING



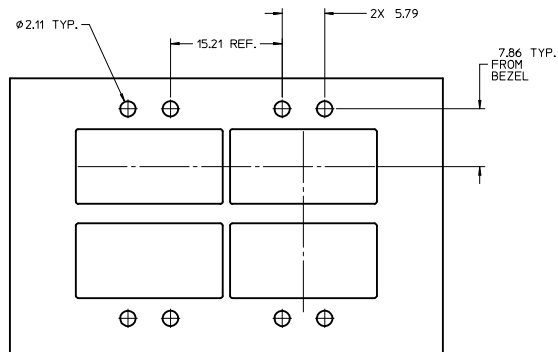
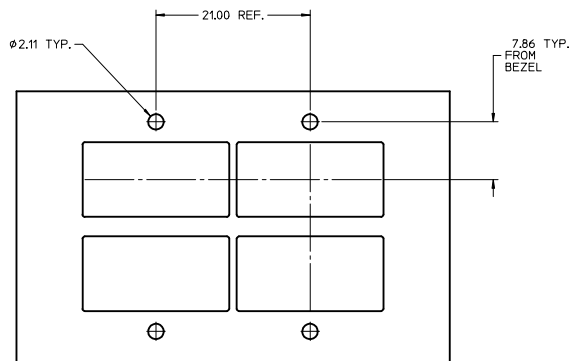
NOTE:
1. SEE QSFP MSA SPECIFICATION FOR BEZEL LOCATION TOLERANCE.
2. PCB THICKNESS VARIATION MUST BE CONSIDERED WHEN DETERMINING BEZEL OPENING, SIZE, AND LOCATION.

SEE REVISION TABLE EC NO: CPG2013-1899 DRAWN BY: J CHKD: J APPR: KLOYD	QUALITY SYMBOLS	GENERAL TOLERANCES (UNLESS SPECIFIED)		DIMENSION STYLE	SCALE	DESIGN UNITS	THIRD ANGLE PROJECTION
	▽=0	mm	INCH	MM ONLY	1:1	METRIC	☉
	▽=0	4 PLACES ± ---	± ---	DRAWN BY: CHIRSCHY	DATE: 2007/07/23	TITLE: QSFP+ CAGE ASSEMBLY WITH SPRING FINGERS	
	▽=0	3 PLACES ± ---	± ---	CHECKED BY: BRUSSELL	DATE: 2007/07/23	molex	
	2 PLACES ± 0.13	± ---	APPROVED BY: RMAHMOOD	DATE: 2010/11/01	DOCUMENT NO: SD-74750-0021		
	1 PLACE ± 0.25	± ---	ANGULAR ± 1°		MATERIAL NO: SEE SHEET 3		
	0 PLACE ± ---	± ---	DRAFT WHERE APPLICABLE MUST REMAIN WITHIN DIMENSIONS		SIZE D THIS DRAWING CONTAINS INFORMATION THAT IS PROPRIETARY TO MOLEX INCORPORATED AND SHOULD NOT BE USED WITHOUT WRITTEN PERMISSION		

BEZEL LIGHT PIPE CUTOUT POSITION DIMENSIONS
FOR SINGLE SIDE MOUNTING



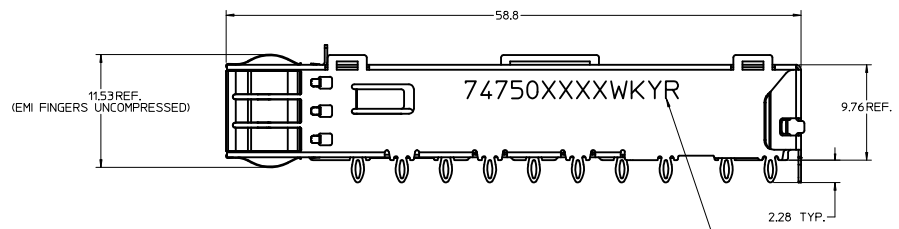
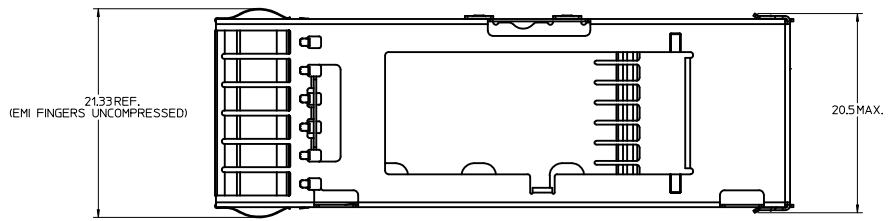
BEZEL LIGHT PIPE CUTOUT POSITION DIMENSIONS
FOR BELLY-TO-BELLY MOUNTING



SEE REVISION TABLE IEC NO: CPG2013-1899 DRAWN BY: CHYK CHECKED BY: APPR: K LLOYD DATE: 2010/11/01	QUALITY SYMBOLS	GENERAL TOLERANCES (UNLESS SPECIFIED)	DIMENSION STYLE	SCALE	DESIGN UNITS	THIRD ANGLE PROJECTION
	▽=0	mm	MM ONLY	3:1	METRIC	☉
	▽=0	INCH				
	▽=0	ANGULAR ± 1 °				
	DRAFT WHERE APPLICABLE MUST REMAIN WITHIN DIMENSIONS					
			DRAWN BY: CHIRSCHY	DATE: 2007/07/23	TITLE: QSFP+ CAGE ASSEMBLY WITH SPRING FINGERS	
			CHECKED BY: BRUSSELL	DATE: 2007/07/23		
			APPROVED BY: MAHMOOD	DATE: 2010/11/01		
			MATERIAL NO:	DOCUMENT NO:	SHEET NO.	
			SEE SHEET 3	SD-74750-0021	7 OF 8	
			THIS DRAWING CONTAINS INFORMATION THAT IS PROPRIETARY TO MOLEX INCORPORATED AND SHOULD NOT BE USED WITHOUT WRITTEN PERMISSION			

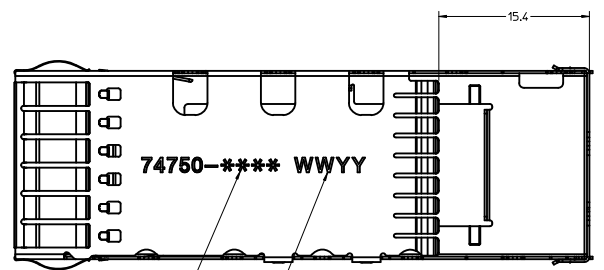
DATE	REV	DESCRIPTION
2007/07/23	A	INITAL RELEASE
2007/08/06	B	CHANGED ALL TANGENT LINES FROM DASHED LINES TO SOLID LINES
2007/08/10	C	1. ADDED COMPONENT P/N COLUMN TO TABLE 2. ADDED "COMPONENT" TO NOTE IN BOTTOM VIEW ON SHEET 1 3. CHANGED TEXT IN MATERIAL NO. SECTION OF TITLE BLOCK TO READ "SEE TABLE"
2008/07/10	D	1. REMOVED COMMENTS FROM TABLE ON SHEET 1 2. ADDED "HOLES OPTIONAL" NOTE TO PCB LAYOUT ON SHEET 2 AND SHEET 3 3. ADDED 747500024 TO TABLE ON SHEET 1 AS WELL AS ISO VIEW 4. UPDATED "COMPONENT PART NUMBER AND DATE CODE" NOTE ON SHEET 1
2008/12/16	E	1. 20.4 DIMENSION WAS 20.38 REF. 2. 58.8 DIMENSION WAS 58.80 REF. 3. 2.28 TYP. DIMENSION WAS 2.28 REF. 4. 15.4 DIMENSION WAS 15.40 REF.
2009/04/13	F	1. REVISED COMPONENT P/N FOR MOLEX P/N 747500024 (CHANGED FROM 747540104 TO 747500104)
2010/10/29	G	1. 20.5 MAX DIMENSION WAS 20.4 2. 19.2 MAX DIMENSION WAS 16.2 MAX
2011/04/05	H	1. ADDED PRINTED DATE CODE TO LEFT SIDE OF CAGE AND ASSOCIATED NOTES. 2. ADDED CUTAWAY 1 AND CRITICAL TO FUNCTION DIMENSION 29.88 ±0.15, SHEET 1. 3. REMOVED 74750 FROM BOTTOM OF CAGE, SHEET 1. 4. UPDATED RoHS NOTE (NOTE 5) TO "LEAD FREE, NO RoHS EXEMPTIONS" ON SHEET 1. 5. ADDED END VIEW, SHEET 1.
2012/04/13	I	1. ADDED 747500012 TO P/N TABLE, SHEET 1. 2. UPDATED BELLY-TO-BELLY CAGE VIEW, SHEET 3. 3. ADDED BELLY-TO-BELLY BEZEL AND DIMENSIONS, SHEET 3.
2013/01/10	J	1. ADDED 747500057 AND 747500058 INTO P/N TABLE, SHEET 3. 2. REARRANGE EACH SHEET

SEE REVISION TABLE EC NO: CPG2013-899 2012/12/25 J DRWNRCHEN08 CHKD: APPR:KLLOYD 2013/01/11	QUALITY SYMBOLS ∇=0 ∇=0 ∇=0	GENERAL TOLERANCES (UNLESS SPECIFIED) mm INCH 4 PLACES ±--- ±--- 3 PLACES ±--- ±--- 2 PLACES ±0.13 ±--- 1 PLACE ±0.25 ±--- 0 PLACE ±--- ±--- ANGULAR ± 1 ° DRAFT WHERE APPLICABLE MUST REMAIN WITHIN DIMENSIONS	DIMENSION STYLE MM ONLY	SCALE 1:1	DESIGN UNITS METRIC	THIRD ANGLE PROJECTION
	DRAWN BY DATE CHIRSCHY 2007/07/23		TITLE QSFP+ CAGE ASSEMBLY WITH SPRING FINGERS			
	CHECKED BY DATE BRUSSELL 2007/07/23		APPROVED BY DATE RMAHMOOD 2010/11/01		MATERIAL NO. DOCUMENT NO. SEE SHEET 3 SD-74750-0021	
	SIZE D		THIS DRAWING CONTAINS INFORMATION THAT IS PROPRIETARY TO MOLEX INCORPORATED AND SHOULD NOT BE USED WITHOUT WRITTEN PERMISSION		SHEET NO. 8 OF 8	



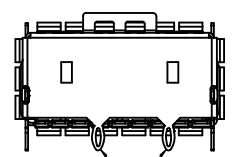
PART NO. AND WEEK/YEAR DATE CODE TO BE PRINTED ON SIDE OF COMPLETED CAGE ASSEMBLY APPROXIMATELY AS SHOWN. SEE TABLE BELOW FOR DATE CODE INFORMATION.

WEEK/YEAR DATE CODE TABLE	
WEEK - 01 THRU 52	EXAMPLE: 01 - FIRST WEEK OF YEAR 52 - LAST WEEK OF YEAR
YEAR - 10, 11, 12 ETC.	EXAMPLE: YEAR 2010 - 10

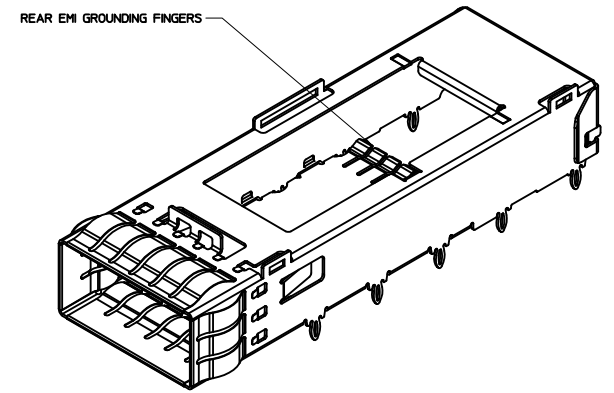


COMPONENT PART NUMBER (SEE TABLE)

COMPONENT DATE CODE



REAR PINS ARE OPTIONAL (SEE CHART)



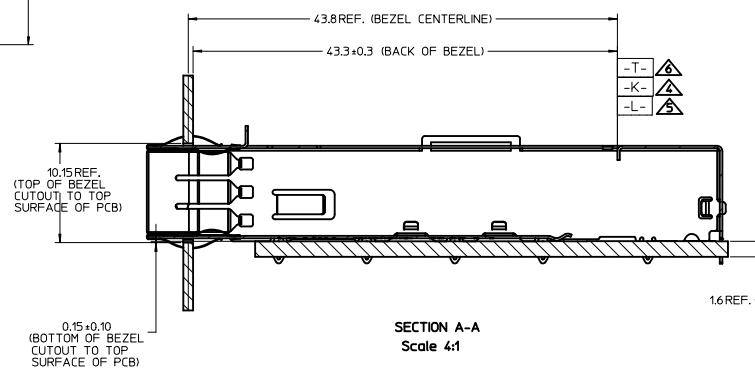
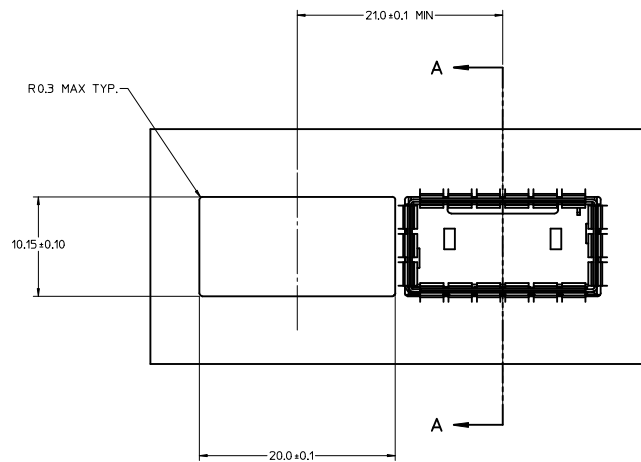
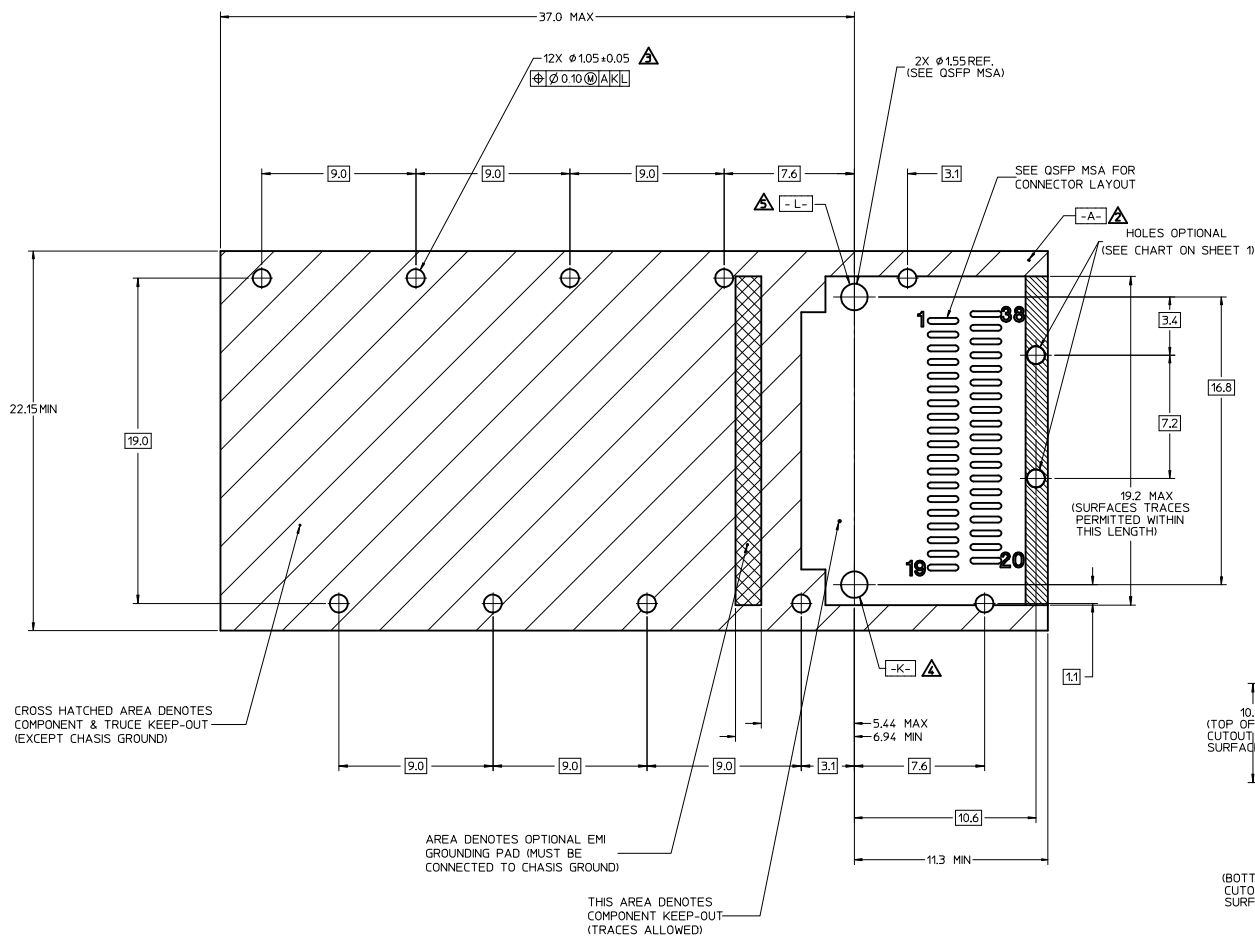
FINISHED ASSEMBLY P/N	COMPONENT P/N (CAGE)	# OF REAR LEGS	COMMENTS
747500092	747500112	2	OPEN TOP FOR HEAT SINK
747500093	747500113	0	OPEN TOP FOR HEAT SINK

NOTES:

- PRESS FIT LEGS 2.28mm [0.090"] LONG
- SINGLE SIDED BOARD THICKNESS
 NOMINAL: 1.60 [0.062"]
 MINIMUM: 1.44 [0.057"]
 BELLY TO BELLY BOARD THICKNESS
 NOMINAL: 2.30 [0.090"]
 MINIMUM: 2.07 [0.081"]
- MATERIAL: COPPER ALLOY (PLATED PRIOR TO CUTTING AND FORMING)
 PLATING: NICKEL
- REFERENCE DOCUMENTS:
 PRODUCT SPECIFICATION: QSFP MSA
- THIS PART MEETS THE RESTRICTION OF HAZARDOUS SUBSTANCES IN ELECTRICAL AND ELECTRONIC EQUIPMENT (ROHS) DIRECTIVE (2002/95/EC).

INITIAL RELEASE EC NO: USY2011-0437 DRAWN: JERWIN 2010/09/20 CHECKED: CHIRSCHY 2010/09/20 APPROVED: RMAHMOOD 2010/12/20	QUALITY SYMBOLS	GENERAL TOLERANCES (UNLESS SPECIFIED)	DIMENSION STYLE	SCALE	DESIGN UNITS	THIRD ANGLE PROJECTION	
	▼=0 ▽=0	mm INCH	MM ONLY	4:1	METRIC		
		4 PLACES ±--- ±--- 3 PLACES ±--- ±--- 2 PLACES ±0.13 ±--- 1 PLACE ±0.25 ±---	DRAWN BY DATE JERWIN 2010/09/20 CHECKED BY DATE CHIRSCHY 2010/09/20 APPROVED BY DATE RMAHMOOD 2010/12/20	TITLE	QSFP CAGE ASSEMBLY W/ SPRING FINGERS		
		ANGULAR ± 1°	MATERIAL NO. SEE TABLE	MOLEX INCORPORATED	DOCUMENT NO. SD-74750-0092	SHEET NO. 1 OF 4	
DRAFT WHERE APPLICABLE MUST REMAIN WITHIN DIMENSIONS		THIS DRAWING CONTAINS INFORMATION THAT IS PROPRIETARY TO MOLEX INCORPORATED AND SHOULD NOT BE USED WITHOUT WRITTEN PERMISSION					

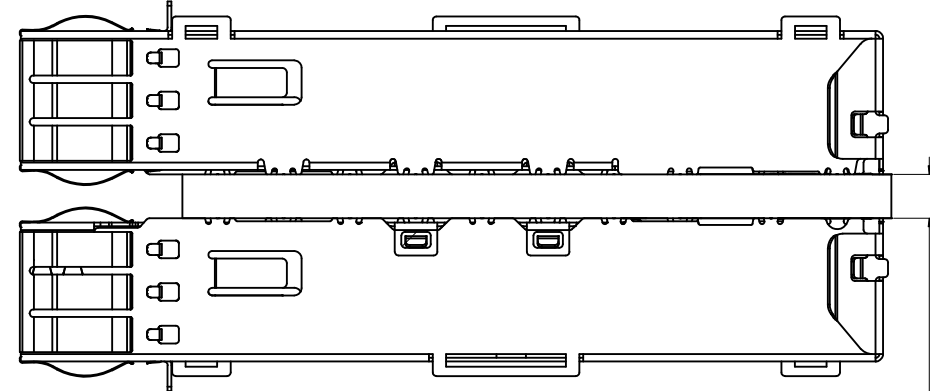
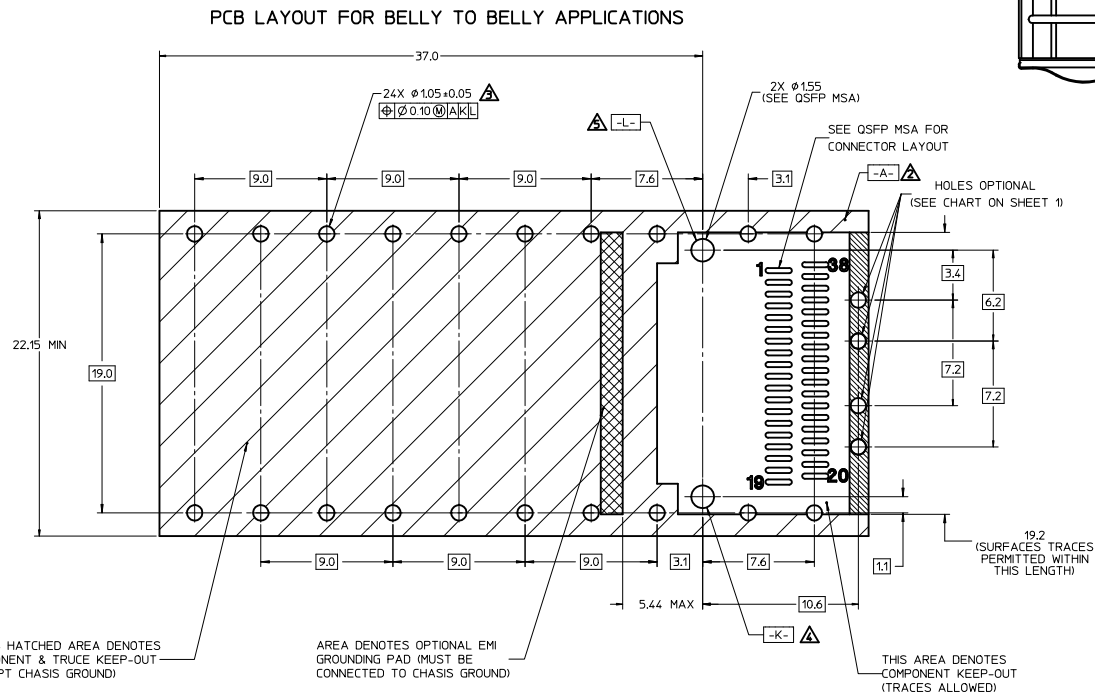
PCB LAYOUT FOR SINGLE SIDED APPLICATIONS



NOTES:

1. DATUM -A- IS TOP SURFACE OF HOST BOARD PER MSA
2. FINISHED HOLE SIZE (AFTER PLATING)
3. DATUM -K- IS HOST BOARD THRU HOLE #1 TO ACCEPT CONNECTOR GUIDE POST PER MSA
4. DATUM -L- IS HOST BOARD THRU HOLE #2 TO ACCEPT CONNECTOR GUIDE POST PER MSA
5. DATUM -T- IS HARD STOP ON CAGE PER MSA

INITIAL RELEASE EC NO: USY2011-0437 DRAWN BY: JERWIN 2010/09/20 CHECKED BY: CHYKCHIRSCHY 2010/09/20 APPR: RMAHMOOD 2010/12/20	QUALITY SYMBOLS ▽=0 ▽=0	GENERAL TOLERANCES (UNLESS SPECIFIED)		DIMENSION STYLE MM ONLY	SCALE 1:1	DESIGN UNITS METRIC	THIRD ANGLE PROJECTION		
		4 PLACES ± --- ± ---	3 PLACES ± --- ± ---	2 PLACES ± 0.13 ± ---	1 PLACE ± 0.25 ± ---	DRAWN BY: JERWIN DATE: 2010/09/20	CHECKED BY: CHIRSCHY DATE: 2010/09/20	APPROVED BY: RMAHMOOD DATE: 2010/12/20	TITLE QSFPC CAGE ASSEMBLY W/ SPRING FINGERS
		ANGULAR ± 1°		DRAFT WHERE APPLICABLE MUST REMAIN WITHIN DIMENSIONS		WATER: NO.	SEE TABLE	DOCUMENT NO. SD-74750-0092	SHEET NO. 2 OF 4
		THIS DRAWING CONTAINS INFORMATION THAT IS PROPRIETARY TO MOLEX INCORPORATED AND SHOULD NOT BE USED WITHOUT WRITTEN PERMISSION							



NOTE:
BEZEL CUTOUT LOCATIONS FOR BELLY TO BELLY APPLICATIONS
ARE DEPENDENT ON PCB THICKNESS

2.3 REF.

NOTES:

1. SEE QSFP MSA SPECIFICATION FOR BEZEL LOCATION TOLERANCE
2. DATUM -A- IS TOP SURFACE OF HOST BOARD PER MSA
3. FINISHED HOLE SIZE (AFTER PLATING)
4. DATUM -K- IS HOST BOARD THRU HOLE #1 TO ACCEPT CONNECTOR GUIDE POST PER MSA
5. DATUM -L- IS HOST BOARD THRU HOLE #2 TO ACCEPT CONNECTOR GUIDE POST PER MSA

INITIAL RELEASE EC NO: USY2011-0437 DRAWN BY: JERWIN CHYKCHRSCHY APPROVED BY: RAHMOOD DATE: 2010/09/20 DATE: 2010/09/20 DATE: 2010/12/20	QUALITY SYMBOLS ▽=0 ▽=0	GENERAL TOLERANCES (UNLESS SPECIFIED)		DIMENSION STYLE MM ONLY	SCALE 1:1	DESIGN UNITS METRIC	THIRD ANGLE PROJECTION
		4 PLACES ± --- ± --- 3 PLACES ± --- ± --- 2 PLACES ± 0.13 ± --- 1 PLACE ± 0.25 ± --- ANGULAR ± 1°	mm INCH	DRAWN BY JERWIN DATE 2010/09/20	CHECKED BY CHRSCHY DATE 2010/09/20	TITLE QSFP CAGE ASSEMBLY W/ SPRING FINGERS	
DRAFT WHERE APPLICABLE MUST REMAIN WITHIN DIMENSIONS		MATERIAL NO. SEE TABLE		APPROVED BY RAHMOOD DATE 2010/12/20		MOLEX INCORPORATED	
		SIZE D		DOCUMENT NO. SD-74750-0092		SHEET NO. 3 OF 4	

