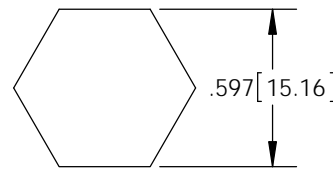
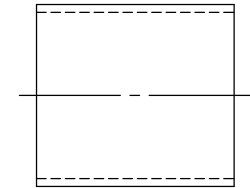
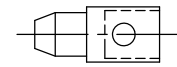
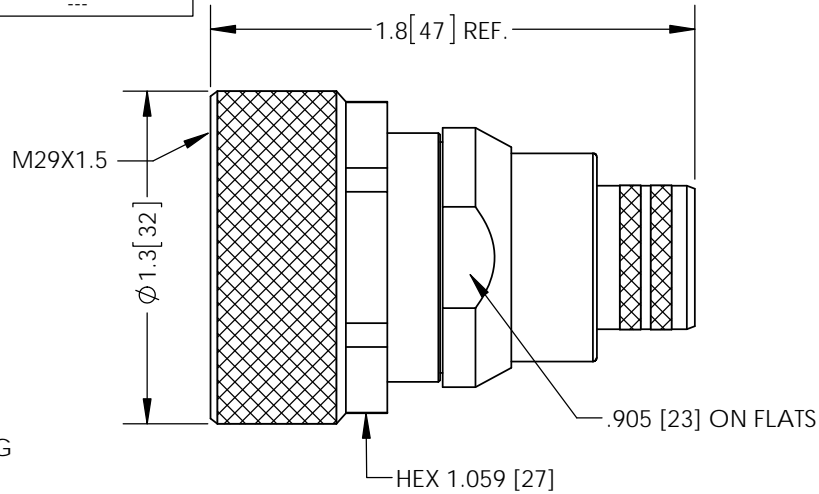
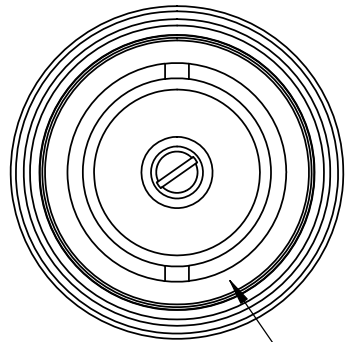


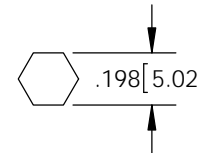
THE INFORMATION CONTAINED IN THIS DRAWING IS THE SOLE PROPERTY OF L-COM, INC. ANY REPRODUCTION IN PART OR WHOLE WITHOUT THE WRITTEN PERMISSION OF L-COM, INC. IS PROHIBITED.

REVISIONS			
REV	DESCRIPTION	DATE	APPROVED
A	INITIAL RELEASE	09/20/13	D.GRIFFIN
B	ECN7073 DIELECTRIC WITHSTANDING VOLTAGE TO 4000 VRMS (AT SEA LEVEL)	09/20/13	B.PUCHASKI

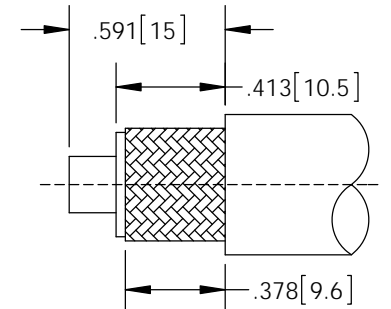
DESCRIPTION	MATERIAL	FINISH
BODY	BRASS	SILVER
SHELL	BRASS	NICKEL
INSULATOR	PTFE	---
CENTER PIN	BRASS	SILVER
PIN	BRASS	SILVER
O-RING	RUBBER	---



RECOMMENDED CRIMPING DIMENSION FOR FERRULE



RECOMMENDED CRIMPING DIMENSION FOR PIN



RECOMMENDED CABLE STRIPPING DIMENSION

NOTES:

ELECTRICAL:
 IMPEDANCE: 50OHM
 FREQUENCY RANGE: DC~6 GHz
 INSERTION LOSS: .2 dB MAX.
 WORKING VOLTAGE: 2700 VRMS MAX.
 DIELECTRIC WITHSTANDING VOLTAGE: 4000 VRMS MIN. (AT SEA LEVEL)



PACKAGING:
 COMPONENT SHALL BE INDIVIDUALLY PACKAGED IN ACCORDANCE WITH L-COM SPECIFICATION PKG-00012

REGULATORY COMPLIANCE:
 ROHS, CE

UNLESS OTHERWISE SPECIFIED, DIMENSIONS ARE IN INCHES [mm] DIMENSIONAL TOLERANCES: .X = ±.1 [2.54] .XX = ±.01 [25] .XXX = ±.005 [13] ANGULAR TOLERANCES: ALL = ± 1°	APPROVALS	DATE		45 BEECHWOOD DRIVE NORTH ANDOVER, MA 01845	
	DRAWN BY B.PUCHASKI	09/04/13			
	CHECKED BY K.BURGNER	09/04/13	CATEGORY	COAXIAL	
	APPROVED BY P.PESA	09/04/13	PRODUCT DESCRIPTION	7/16 DIN MALE CRIMP CONNECTOR FOR LMR600	
PROJECTION 	COLOR VARIATIONS MAY OCCUR	SIZE A	FSCM NO. 43321	DWG. NO. ADM-1600	REV. B
		SCALE: NONE	CAD FILE: ADM-1600.SLDDRW	SHEET 1 OF 1	