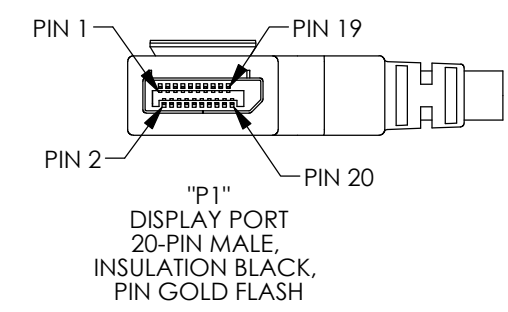
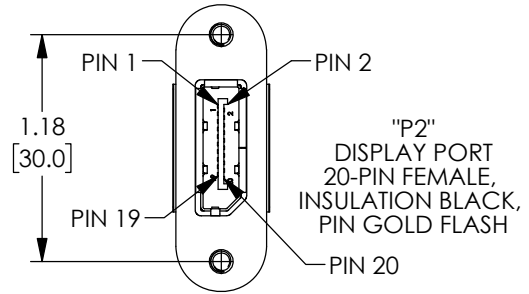
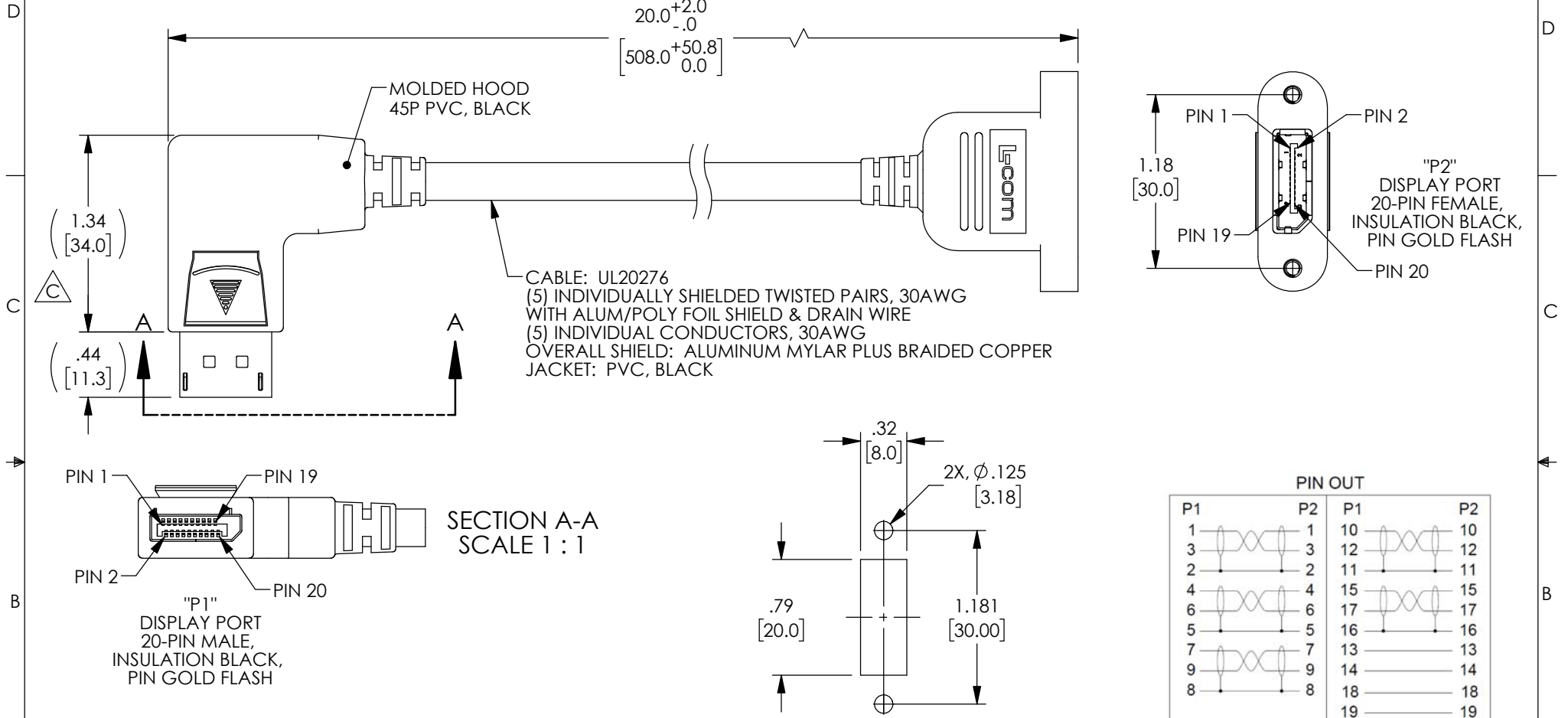
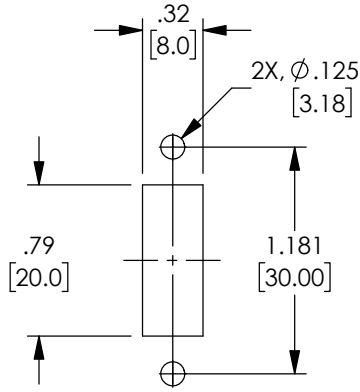


THE INFORMATION CONTAINED IN THIS DRAWING IS THE SOLE PROPERTY OF L-COM, INC. ANY REPRODUCTION IN PART OR WHOLE WITHOUT THE WRITTEN PERMISSION OF L-COM, INC. IS PROHIBITED.

REVISIONS			
REV	DESCRIPTION	DATE	APPROVED
A	INITIAL RELEASE	04/27/17	J.LABOY
B	ECN 8922: CHG TEXT "20-PIN FEMALE" TO "20-PIN MALE" AT ZONE B-6	9/13/2017	R.CLARK
C	ECN 9083: ADDED RECOMMENDED PANEL CUTOUT	3/21/18	D.FRISIELLO



SECTION A-A
SCALE 1:1



RECOMMENDED
PANEL CUTOUT

PIN OUT			
P1	P2	P1	P2
1	1	10	10
3	3	12	12
2	2	11	11
4	4	15	15
6	6	17	17
5	5	16	16
7	7	13	13
9	9	14	14
8	8	18	18
		19	19
		S	S

NOTES:

ELECTRICAL PROPERTIES:

- CABLE ASSEMBLY SHALL BE TESTED FOR CONTINUITY
- VOLTAGE TEST: DC 300V 10ms
INSULATION RESISTANCE: 5.0M ohm/min
CONDUCTANCE RESISTANCE: 5.0 ohm/max

MISCELLANEOUS:

MOUNTING HARDWARE INCLUDED. 2X, 4-40 UNC-2A x 3/8" LG PHILLIPS HEAD SCREW.
CABLE ASSEMBLY SHALL BE INDIVIDUALLY PACKAGED IN ACCORDANCE WITH L-COM SPECIFICATION PS-0031

REGULATORY COMPLIANCE:

CE 2011/65/EU(RoHS DIRECTIVE)

UNLESS OTHERWISE SPECIFIED, DIMENSIONS ARE IN INCHES [mm] OVERALL CABLE LENGTH TOLERANCE: ≤12 [305] = +1 [25] / -0 >12 [305] ≤60 [1524] = +2 [51] / -0 >60 [1524] ≤120 [3048] = +4 [102] / -0 >120 [3048] ≤300 [7620] = +6 [152] / -0 >300 [7620] = +5% / -0%	APPROVALS	DATE		50 HIGH STREET NORTH ANDOVER, MA 01845
	DRAWN BY R.CLARK	4/26/2017		
ALL OTHER DIMENSIONAL TOLERANCES: .X = ±.2 [5.08] .XX = ±.02 [1.51] .XXX = ±.005 [1.13]	CHECKED BY D.FRISIELLO	4/27/2017	CATEGORY	
	APPROVED BY B.GATES	4/27/2017	AUDIO VIDEO	
PROJECTION	CONFIGURATION DETAILS OF UNDIMENSIONED FEATURES MAY VARY		PRODUCT DESCRIPTION	
	COLOR VARIATIONS MAY OCCUR		DP RA M TO PNL MNT DP F CABLE	
	SIZE A	FSCM NO. 43321	DWG. NO. DPA00001-020I	REV. C
	SCALE: NONE		CAD FILE: DPA00001-020I.SLDDRW	
				SHEET 1 OF 1