

DO NOT SCALE FROM THIS PRINT

185-J-P-EP-ST-CMM-X-X

- GENDER
  - J: JACK
- TYPE
  - P: PCB
- FINISH
  - EP: 50µ" EXTRA HEAVY GOLD CENTER CONTACT, PASSIVATED OUTER CONTACT
- PACKAGING
  - K: INDIVIDUALLY BAGGED
  - BLANK: TRAYS
- OPTION
  - 1: OPTION 1 (WITHOUT SCREWS)
  - 2: OPTION 2 (WITH SCREWS)
- TERMINATION
  - CMM: COMPRESSION MOUNT MICROSTRIP
- ORIENTATION
  - ST: STRAIGHT

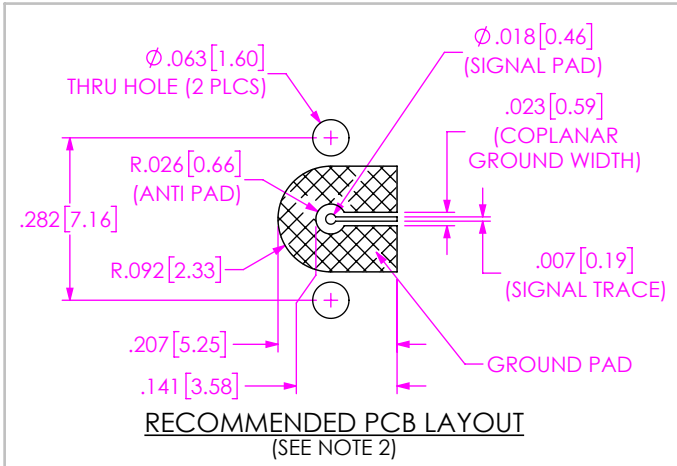
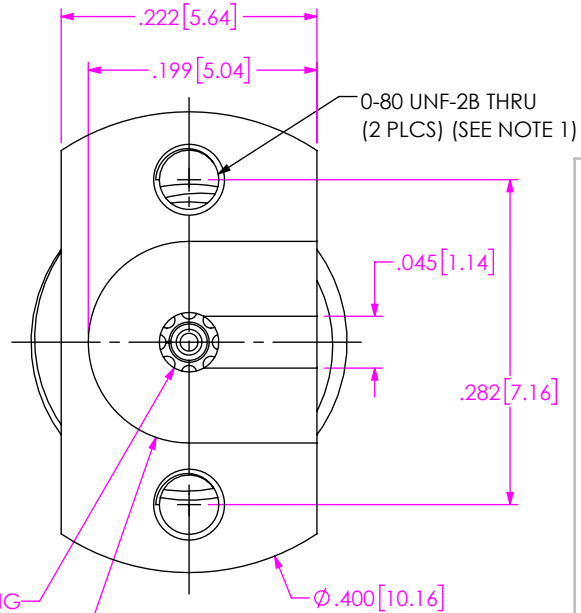
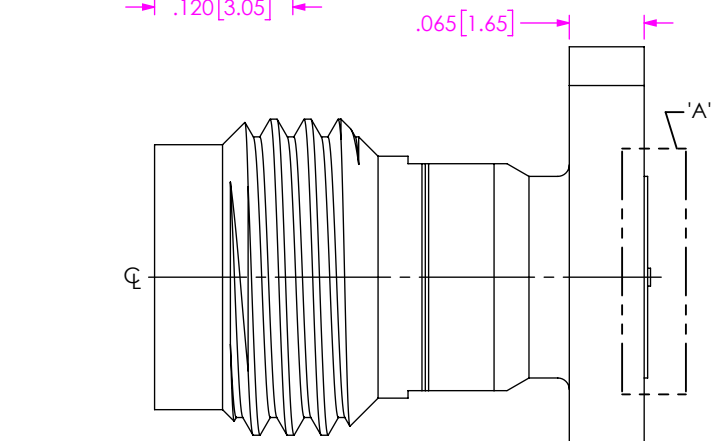
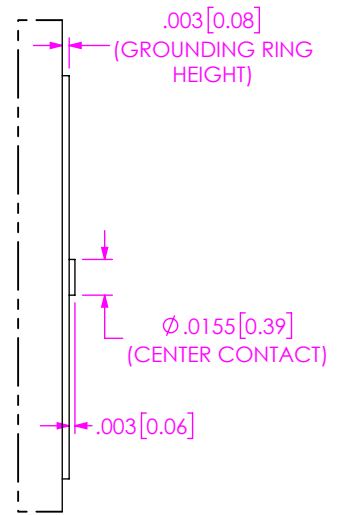
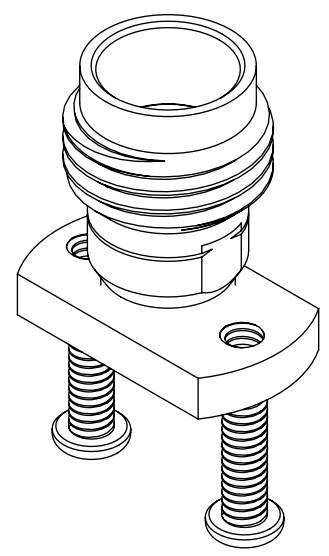
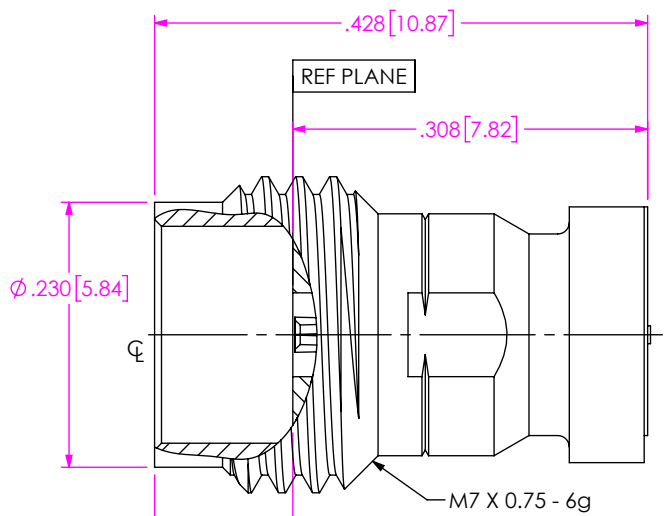


FIG 1  
185-J-P-EP-ST-CMM-X SHOWN

NOTES:

1. RECOMMENDED TORQUE 0.5~0.8 INCH-POUNDS.
2. THIS IS A GENERAL FOOTPRINT AND IS NOT OPTIMIZED FOR ELECTRICAL PERFORMANCE, CONTACT SIG@SAMTEC.COM FOR ASSISTANCE WITH ELECTRICAL LAYOUT.

PROPRIETARY NOTE  
THIS DOCUMENT CONTAINS CONFIDENTIAL AND PROPRIETARY INFORMATION AND ALL DESIGN, MANUFACTURING, REPRODUCTION, USE, PATENT RIGHTS AND SALES RIGHTS ARE EXPRESSLY RESERVED BY SAMTEC, INC. THIS DOCUMENT SHALL NOT BE DISCLOSED, IN WHOLE OR PART, TO ANY UNAUTHORIZED PERSON OR ENTITY NOR REPRODUCED, TRANSFERRED OR INCORPORATED IN ANY OTHER PROJECT IN ANY MANNER WITHOUT THE EXPRESS WRITTEN CONSENT OF SAMTEC, INC.

**samtec**  
520 PARK EAST BLVD, NEW ALBANY, IN 47150  
PHONE: 812-944-6733 FAX: 812-948-5047  
e-Mail: info@SAMTEC.com code: 55322

MATERIAL: DO NOT SCALE DRAWING SHEET SCALE: 6:1  
BODY, BUSHING & SCREW: STAINLESS STEEL  
SOCKET: COPPER ALLOY

DESCRIPTION: 1.85MM ST JACK FOR COMPRESSION MOUNT MICROSTRIP  
DWG. NO. 185-J-P-EP-ST-CMM-X-X