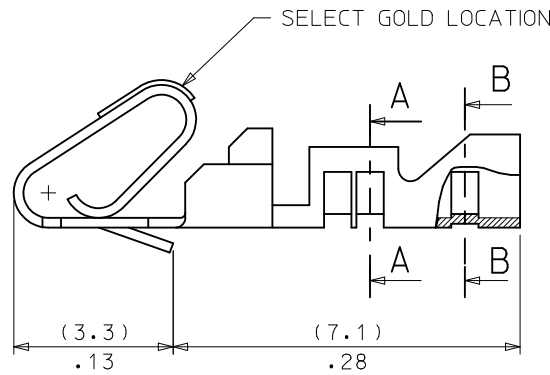
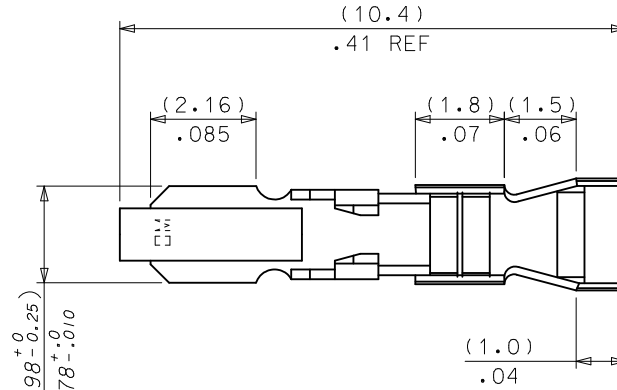
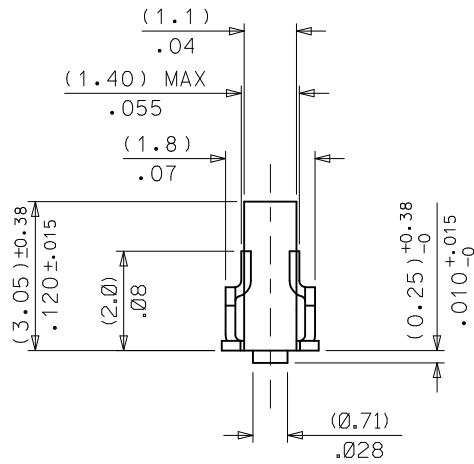


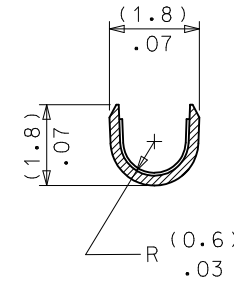
TOP FEEDING REEL WINDING DIRECTION



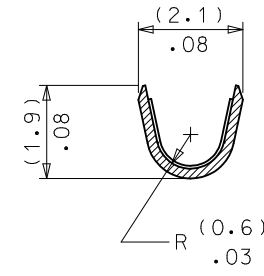
PART No.	ENG No.	FORM	FINISH
08-65-0105	8088-(555)	CHAIN	555
08-65-0106	8088-(555)L	LOOSE	

LEGEND

8088-(***)*
 PLATING CODE ——— BLANK = CHAIN FORM, TOP FEEDING REEL
 L = LOOSE FORM



A-A



B-B

NOTES:

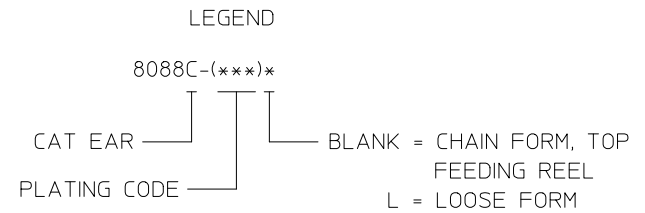
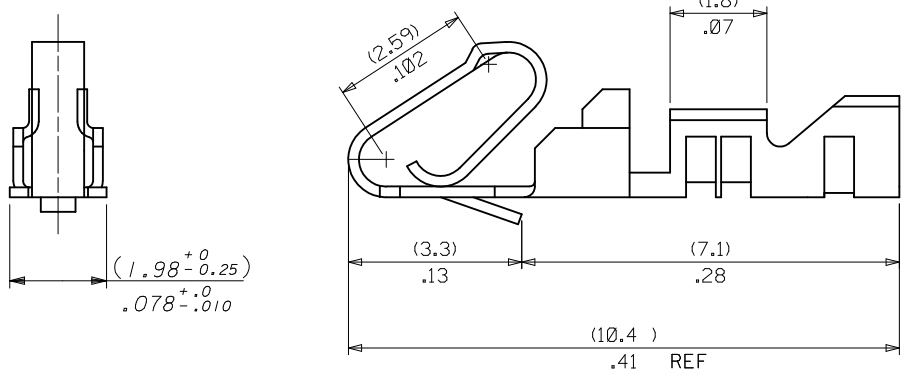
- MATERIAL: PHOS. BRONZE
- FINISH:
555 = 0.00038/.000015 MIN. SELECT GOLD IN CONTACT AREA OVER (0.00076)/.000030 MIN. NICKEL OVERALL
- PRODUCT SPECIFICATION: PS-99020-0088.
- FOR 22-30 AWG WIRE: (1.57)/.062 DIA MAX INSULATION
- THIS PART CONFORMS TO CLASS B REQUIREMENTS OF MOLEX COSMETIC SPECIFICATION PS-45499-002.

CORRECT GOLD LOC. EC NO: UCP2012-1821 DRWN:HKIPPER 2011/08/02 CHKD:HKIPPER 2011/08/02 APPR:FSMITH 2012/02/02	QUALITY SYMBOLS $\nabla Z=0$ $\nabla E=0$ $\nabla F=0$	GENERAL TOLERANCES (UNLESS SPECIFIED) <table border="1"> <thead> <tr> <th></th> <th>mm</th> <th>INCH</th> </tr> </thead> <tbody> <tr> <td>4 PLACES</td> <td>± ---</td> <td>± ---</td> </tr> <tr> <td>3 PLACES</td> <td>± ---</td> <td>± .010</td> </tr> <tr> <td>2 PLACES</td> <td>± 0.25</td> <td>± .020</td> </tr> <tr> <td>1 PLACE</td> <td>± 0.51</td> <td>± ---</td> </tr> </tbody> </table>		mm	INCH	4 PLACES	± ---	± ---	3 PLACES	± ---	± .010	2 PLACES	± 0.25	± .020	1 PLACE	± 0.51	± ---	DIMENSION STYLE MM/IN	SCALE 10:1	DESIGN UNITS METRIC	THIRD ANGLE PROJECTION
		mm	INCH																		
	4 PLACES	± ---	± ---																		
	3 PLACES	± ---	± .010																		
2 PLACES	± 0.25	± .020																			
1 PLACE	± 0.51	± ---																			
DESCRIPTION K	REV	DRAFT WHERE APPLICABLE MUST REMAIN WITHIN DIMENSIONS	DRAWN BY T. MAHON	DATE 1998/10/26	TITLE KK (2.54)/.100 ANTI-FISH HOOKING TERMINAL 22-30 AWG																
			CHECKED BY DMORIARTY	DATE 2006/09/14	MOLEX INCORPORATED																
			APPROVED BY JDENNEHY	DATE 2006/09/14	DOCUMENT NO. SD-8088-****	SHEET NO. 1 OF 1															

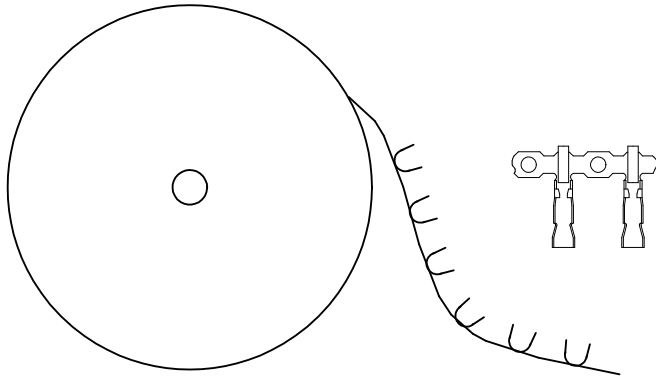
THIS DRAWING CONTAINS INFORMATION THAT IS PROPRIETARY TO MOLEX INCORPORATED AND SHOULD NOT BE USED WITHOUT WRITTEN PERMISSION

10 9 8 7 6 5 4 3 2 1

PART No.	ENG No.	FORM	FINISH SEE NOTE 2
08-52-0105	8088C-(P918)	CHAIN	(P918)
08-52-0106	8088C-(P918)L	LOOSE	(P918)



- NOTES:
1. MATERIAL: PHOS. BRONZE ALLOY
 2. FINISH:
(P918) = HOT TIN DIP (0.00102-0.00305)/.000040-.000120
 3. PRODUCT SPECIFICATION: PS-99020-0088
 4. SAME AS SD-8088-**** EXCEPT CAT EARS.
SEE SD-8088-**** FOR OTHER DIMENSIONS.
 5. FOR 22-30 AWG WIRE, (1.57)/.062 MAX DIA INSULATION
 6. THIS PART CONFORMS TO CLASS B REQUIREMENTS OF COSMETIC SPECIFICATION PS-45499-002.



TOP FEEDING REEL WINDING DIRECTION

REMOVE 102, 999 EC NO: UCP2012-1821 DRAWN: HKIPPER 2011/08/02 CHKD: HKIPPER 2011/08/02 APPR: F SMITH 2012/02/02	DESCRIPTION REV	QUALITY SYMBOLS	GENERAL TOLERANCES (UNLESS SPECIFIED)	DIMENSION STYLE MM ONLY	SCALE 10:1	DESIGN UNITS METRIC	THIRD ANGLE PROJECTION																																				
		$\nabla Z=0$ $\nabla E=0$ $\nabla F=0$	<table border="1"> <tr> <th></th> <th>mm</th> <th>INCH</th> </tr> <tr> <td>4 PLACES</td> <td>± ---</td> <td>± ---</td> </tr> <tr> <td>3 PLACES</td> <td>± ---</td> <td>± .010</td> </tr> <tr> <td>2 PLACES</td> <td>± 0.25</td> <td>± .020</td> </tr> <tr> <td>1 PLACE</td> <td>± 0.51</td> <td>± ---</td> </tr> </table>		mm	INCH	4 PLACES	± ---	± ---	3 PLACES	± ---	± .010	2 PLACES	± 0.25	± .020	1 PLACE	± 0.51	± ---	<table border="1"> <tr> <th>mm</th> <th>INCH</th> </tr> <tr> <td>± ---</td> <td>± ---</td> </tr> <tr> <td>± .010</td> <td>± .010</td> </tr> <tr> <td>± .020</td> <td>± .020</td> </tr> <tr> <td>± .051</td> <td>± ---</td> </tr> </table>	mm	INCH	± ---	± ---	± .010	± .010	± .020	± .020	± .051	± ---	<table border="1"> <tr> <th>DRAWN BY</th> <th>DATE</th> </tr> <tr> <td>T. MAHON</td> <td>1998/10/26</td> </tr> <tr> <th>CHECKED BY</th> <th>DATE</th> </tr> <tr> <td>D. MORIARTY</td> <td>2006/09/14</td> </tr> <tr> <th>APPROVED BY</th> <th>DATE</th> </tr> <tr> <td>JDENNEHY</td> <td>2006/09/14</td> </tr> </table>	DRAWN BY	DATE	T. MAHON	1998/10/26	CHECKED BY	DATE	D. MORIARTY	2006/09/14	APPROVED BY	DATE	JDENNEHY	2006/09/14	TITLE
	mm	INCH																																									
4 PLACES	± ---	± ---																																									
3 PLACES	± ---	± .010																																									
2 PLACES	± 0.25	± .020																																									
1 PLACE	± 0.51	± ---																																									
mm	INCH																																										
± ---	± ---																																										
± .010	± .010																																										
± .020	± .020																																										
± .051	± ---																																										
DRAWN BY	DATE																																										
T. MAHON	1998/10/26																																										
CHECKED BY	DATE																																										
D. MORIARTY	2006/09/14																																										
APPROVED BY	DATE																																										
JDENNEHY	2006/09/14																																										
DRAFT WHERE APPLICABLE MUST REMAIN WITHIN DIMENSIONS		SEE CHART	MATERIAL NO.		DOCUMENT NO.	SHEET NO.																																					
		SIZE B	THIS DRAWING CONTAINS INFORMATION THAT IS PROPRIETARY TO MOLEX INCORPORATED AND SHOULD NOT BE USED WITHOUT WRITTEN PERMISSION		SD-8088C-****		1 OF 1																																				

9 8 7 6 5 4 3 2 1