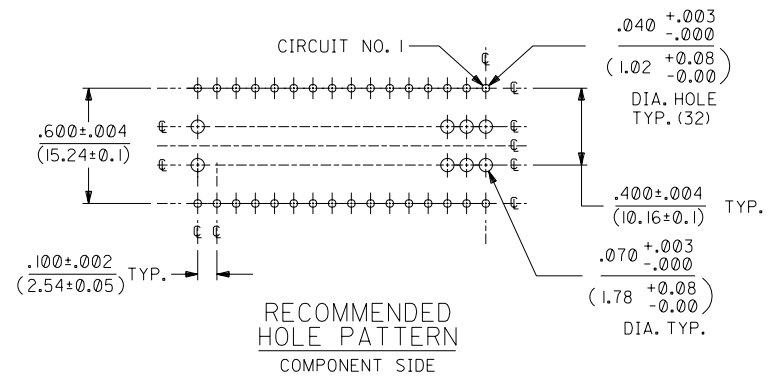
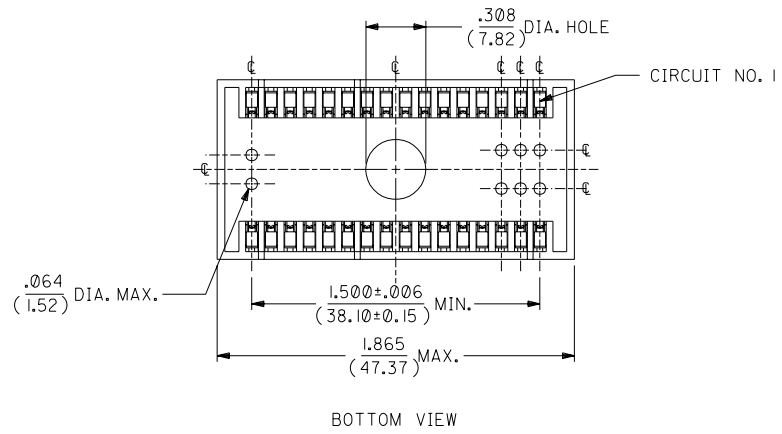


1. MATERIAL:  
 HOUSING -94V-0, GLASS FILLED POLYESTER.  
 TERMINAL - BERYLLIUM COPPER, POST PLATED:  
 TIN OVERALL - .000200/(0.00508) MINIMUM TIN IN CONTACT AREA  
 .000075/(0.00191) MINIMUM TIN IN TAIL AREA, OVER  
 .000050/(0.00127) MINIMUM NICKEL UNDERPLATE OVERALL.  
 30 GOLD - .000030/(0.00076) MINIMUM GOLD IN CONTACT AREA  
 .000075/(0.00191) MINIMUM TIN IN TAIL AREA OVER  
 .000050/(0.00127) MINIMUM NICKEL UNDERPLATE OVERALL.

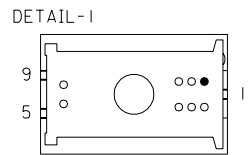
2. ASSEMBLIES TO BE SHIPPED IN TRAYS.  
 3. DIMENSIONS GIVEN ACROSS CENTERLINES ARE SYMMETRICAL ABOUT THOSE CENTERLINES TO WITHIN HALF THE TOTAL TOLERANCE, EXCEPT 1.790 DIMENSION.  
 4. THIS PART MATES WITH 78802-\*\*\*\* CARRIER.  
 5. MINIMUM TERMINAL RETENTION: 1.0 LB./CIRCUIT.  
 6. FOR POLARIZATION OPTIONS, SEE SHEET 2.  
 7. PS-78804 APPLIES



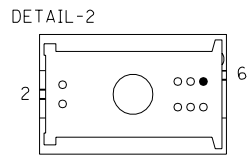
NOTE FOR LEAD FREE CONVERSION:  
 THE PRIMARY SHIPPING CARTON WILL BE LABELED "COMPLIANT TO ROHS DIRECTIVE 2002/95/EC AND ELV ANNEX II OF DIRECTIVE 2000/53/EC". CARTONS WITHOUT THIS LABEL MAY CONTAIN PRODUCT WITH LEAD.

F	LEAD FREE CONV ECN UCP2004-2092 RKADAMS 04/04/23
E	-115 WAS .110 ECN UDT1999-1005 SCHAFFER 99/06/18
D	REVISED PER ECN#U81251 MFM 11-25-97
C	REVISED PER ECN#U81478 MJS 5-24-96
B2	ADDED EDP PER ECN # U8053 20 JUNE 91 SEC
B1	ADDED P/N's, etc PER ERO 30698 11/30/90 SEC
B	REDRAWN ON CAD PER ECR # U90175 09/23/88 PB/SEC

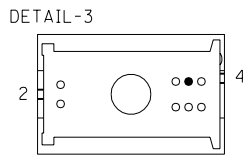
DIMENSIONS SHOWN (METRIC) INCH UNLESS OTHERWISE SPECIFIED TOLERANCES: ANGULAR ± 1/2°		▽ = 0	◻ = 0	REVISION ONLY ON CAD SYSTEM
INCH METRIC		TITLE 32 CKT. MEMORY MODULE SOCKET .100 x .600 GRID		
3 PLACE ± .005 ---	---	SHEET NO. DATE 1 OF 2 9/27/88		
2 PLACE ± .01 ± 0.13	---	MOLEX INCORPORATED U.S.A.		
1 PLACE --- ± 0.25	---	LITEL, ILL. 60532		
DRAFT WHERE APPLICABLE MUST REMAIN WITHIN DIMENSIONS		PART NO. DRWG. NO. SEE CHART SDA-78807-****		
DRWG. BY PB	CHK'D. BY SEC	FILE NAME SD788071 DGN	THIS DRAWING CONTAINS INFORMATION THAT IS PROPRIETARY TO MOLEX INC. AND SHOULD NOT BE USED WITHOUT WRITTEN PERMISSION	DIV. SIZE DA C



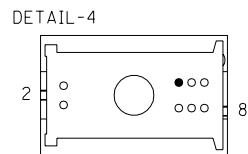
KEYS 1, 5 & 9



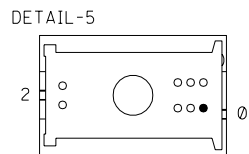
KEYS 2 & 6



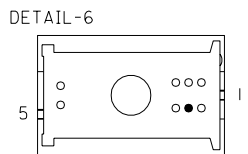
KEYS 2 & 4



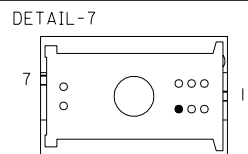
KEYS 2 & 8



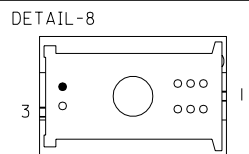
KEYS 2 & 0



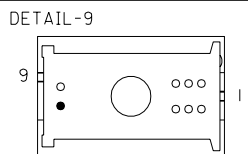
KEYS 5 & 1



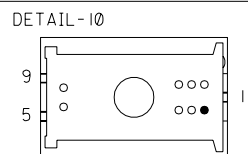
KEYS 7 & 1



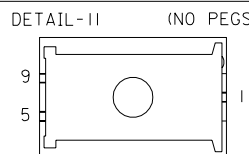
KEYS 3 & 1



KEYS 9 & 1

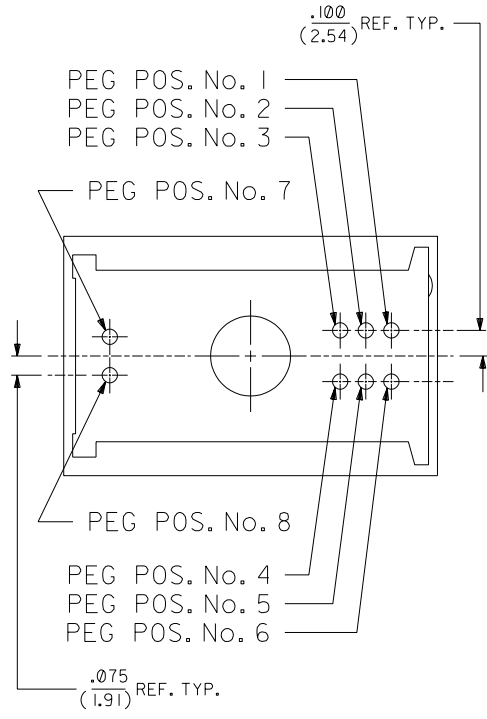


KEYS 1, 5 & 9



KEYS 1, 5 & 9

DETAIL		ENG. NO.	PART NO. (EDP)	PLATING CODE	DETAIL	ENG. NO.	PART NO. (EDP)	PLATING CODE
COLOR		A78807-			COLOR	A78807-		
BLACK	1	0418	15-41-3322	TIN OVERALL				
RED	2	0419	15-41-3327					
YELLOW	3	0420	15-41-3320					
GRAY	4	0421	15-41-3325					
DK. GREEN	5	0422	15-41-3326					
NATURAL	6	0423	15-41-3321					
LT. BLUE	7	0424	15-41-3324					
ORANGE	8	0425	15-41-3328					
DK. BLUE	9	0426	NOT TOOLED					
RED	1	0436	15-41-3336					
BLACK	11	0518	15-41-3329					



F	SEE SHEET 1
D	SEE SHEET 1
B2	SEE SHEET 1
B1	SEE SHEET 1
B	SEE SHEET 1

DIMENSIONS SHOWN (METRIC) INCH		= 0		= 0		REVISE ONLY ON CAD SYSTEM	
UNLESS OTHERWISE SPECIFIED TOLERANCES: ANGULAR ± 1/2°							
5 PLACE ± .005		---		---		---	
2 PLACE ± .01		± 0.13		---		---	
1 PLACE ---		± 0.25		---		---	
DRAFT WHERE APPLICABLE MUST REMAIN WITHIN DIMENSIONS							
DRWG. BY	SEC	CHK'D. BY	SCALE	2:1	FILE NAME	SD788072	DATE
APP'D. BY					SEE CHART	SDA-78807-****	9/27/88
MOLEX INCORPORATED				SHEET NO. 2		U.S.A.	
L15LE.I.L.L. 60532				DRWG. NO.		DA	
THIS DRAWING CONTAINS INFORMATION THAT IS PROPRIETARY TO MOLEX INC. AND SHOULD NOT BE USED WITHOUT WRITTEN PERMISSION.							

78807

B  
A  
D  
V

A