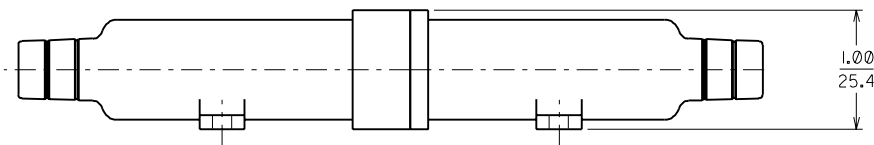
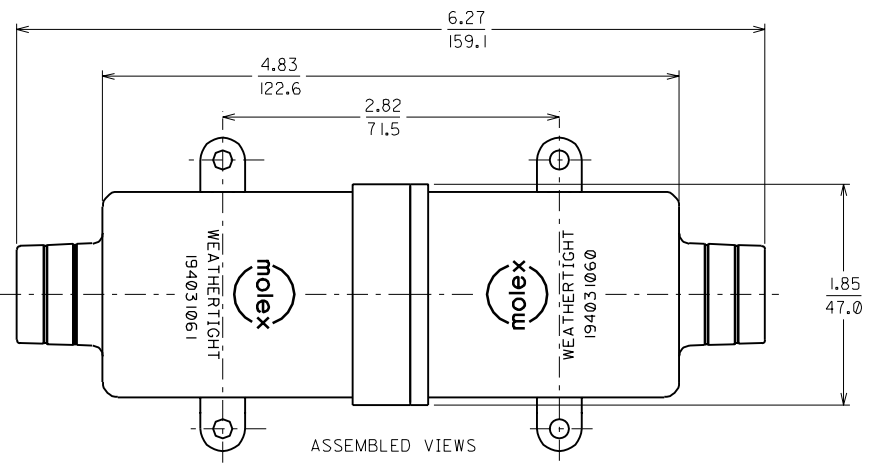


MALE HALF BOOT #194031060
 FEMALE HALF BOOT #194031061

- NOTES:
 1. PARTS ARE PACKAGED 20 SETS PER CONTAINER.
 2. MATERIAL: THERMOPLASTIC ELASTOMER.
 3. UV RESISTANCE: UL "F1".
 4. COLOR: BLACK

-A-	NEW DRAWING
	RELEASE
	ETC2000-00127221



CUSTOMER DRAWING,
 BOOT, WEATHERTIGHT,
 12/16 SC POWER CONNECTOR

 .015

 .038

1.0E+1 99 7 21

DAY
 RWD_

SEE ABOVE

SD: 19403-!!!

19403111,
 DGN

EI