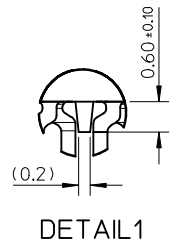
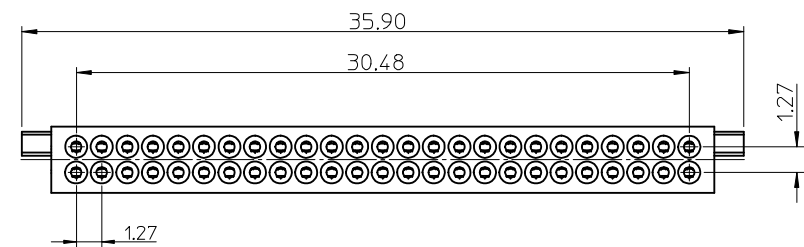
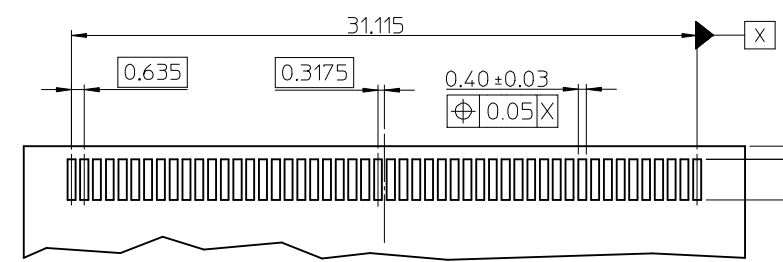
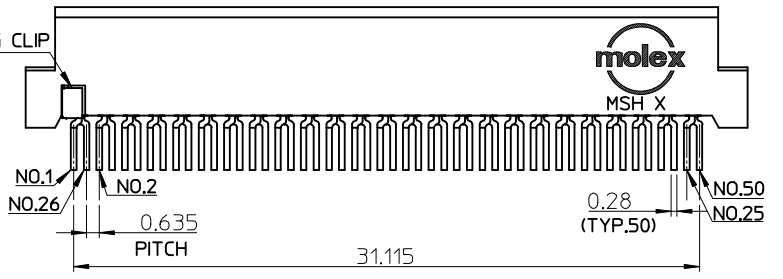
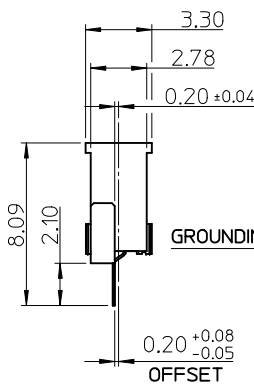
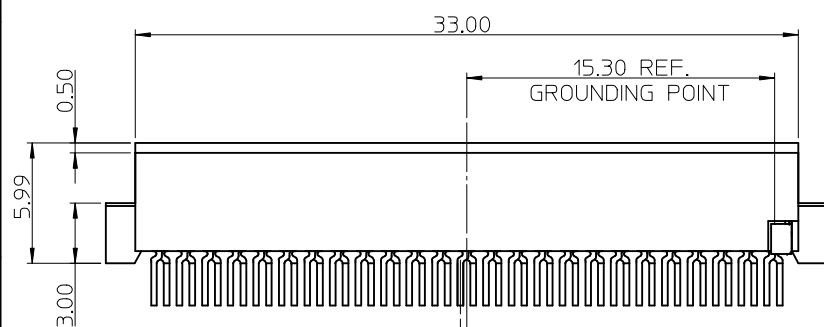


10 9 8 7 6 5 4 3 2 1

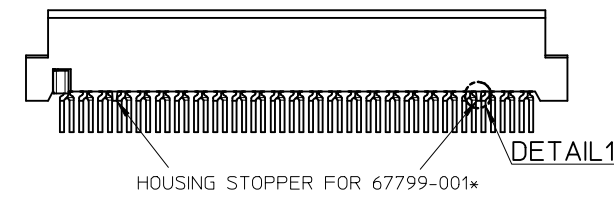


NOTE:
 1.MATERIAL:
 HOUSING, HIGH TEMPERATURE POLYMER.
 TERMINAL, COPPER ALLOY.
 GROUNDING CLIP, COPPER ALLOY.
 2.FINISH: TERMINAL:
 NICKEL OVERALL THICKNESS 0.5 MICRON MINIMUM,
 CONTACT AREA(SEE TABLE):
 a. SELECTIVE GOLD 0.1 MICRON MINIMUM OVER PALLADIUM/NICKEL 0.5 MICRON MINIMUM,
 b. SELECTIVE GOLD 0.75 MICRON MINIMUM OVER NICKEL 0.5 MICRON MINIMUM (FOR P/N:67799-0008),
 SOLDER AREA:(SEE TABLE)
 a.MATTE TIN /TIN-LEAD 5.0 MICRON MINIMUM
 b.GOLD FLASH 0.05 MICRON MINIMUM,
 GROUNDING CLIP:
 GOLD FLASH OVERALL OVER NICKEL 1.25 MICRON MINIMUM.
 3.TERMINAL COPLANARITY 0.08mm MAXIMUM.
 4.PRODUCT SPECIFICATION: PS-67799-001.
 5.PACKAGE: PK-67799-001.
 6.GROUNDING CLIP CONDUCTS WITH TERMINAL NO.1, NO.26.



PLATING TYPE IN SOLDER TAIL	MATTE TIN PLATING		GOLD FLASH PLATING		CONTACT AREA: 30U* GOLD SOLDER TAIL: GOLD FLASH	
HOUSING STOPPER	WITHOUT	WITH	WITHOUT	WITH	WITHOUT	WITH
MATERIAL NO.	67799-0004	67799-0014	67799-0007	67799-0017	67799-0008	67799-0018

PCB LAYOUT RECOMMEND



REVISED CARRIER TAPE

EC NO: SH2013-0122	2012/10/22
DRWN:XOZHANG	2012/10/22
CHKD:XOZHANG	2012/10/22
APPR:AYIN	2012/10/26

QUALITY SYMBOLS

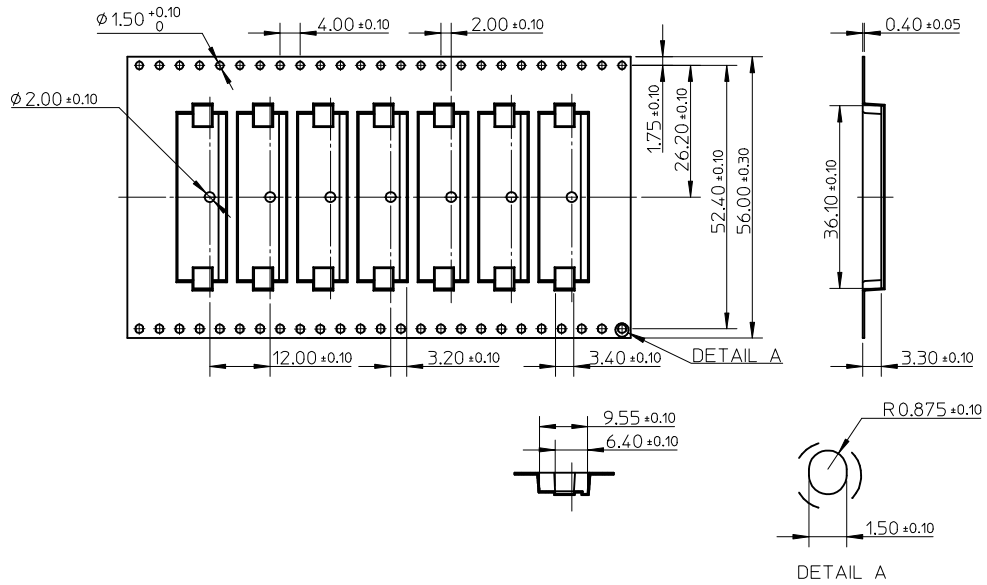
DESCRIPTION

GENERAL TOLERANCES (UNLESS SPECIFIED)	mm	INCH	
	4 PLACES	± ---	± ---
	3 PLACES	± ---	± ---
	2 PLACES	± 0.25	± ---
	1 PLACE	± 0.25	± ---
	0 PLACE	±	±
ANGULAR ± 3 °			
DRAFT WHERE APPLICABLE MUST REMAIN WITHIN DIMENSIONS			

DIMENSION STYLE		SCALE	DESIGN UNITS
MM ONLY		1:1	METRIC
DRAWN BY	DATE	TITLE	
BRAD	2003/02/20	50 CKT CF RECEPTACLE SMT TYPE B, OFFSET 0.20MM	
CHECKED BY	DATE		
WILSON	2003/02/20		
APPROVED BY	DATE		
AYIN	2012/10/26		
MATERIAL NO.	DOCUMENT NO.		
SEE TABLE	SD-67799-004		
SIZE A3	THIS DRAWING CONTAINS INFORMATION THAT IS PROPRIETARY TO MOLEX INCORPORATED AND SHOULD NOT BE USED WITHOUT WRITTEN PERMISSION		

THIRD ANGLE PROJECTION
molex
SHEET NO. 1 OF 2

9 8 7 6 5 4 3 2 1



NOTES:

1. MATERIAL: POIYSTYRENE, THICKNESS: 0.40±0.05mm.
2. COMPONENT LOAD PER 13" REEL: 1,000 PCS.

SEE SHEET 1 EC NO: SHZ013-0122 DRWN:XQZHANG 2012/10/22 CHKD:XQZHANG 2012/10/22 APPR:AYIN 2012/10/26	DESCRIPTION REV	QUALITY SYMBOLS	GENERAL TOLERANCES (UNLESS SPECIFIED)		DIMENSION STYLE MM ONLY		SCALE 1:1	DESIGN UNITS METRIC	THIRD ANGLE PROJECTION	
		$\nabla_A = 0$ $\nabla_G = 0$ $\nabla_P = 0$	mm	INCH	DRAWN BY BRAD	DATE 2003/02/20	TITLE 50 CKT CF RECEPTACLE SMT TYPE B, OFFSET 0.20MM			
		4 PLACES ± --- ± ---	3 PLACES ± --- ± ---	CHECKED BY WILSON	DATE 2003/02/20					
			ANGULAR ± 3 °	DRAFT WHERE APPLICABLE MUST REMAIN WITHIN DIMENSIONS		APPROVED BY AYIN	DATE 2012/10/26	DOCUMENT NO. SD-67799-004		SHEET NO. 2 OF 2
				MATERIAL NO. SEE SHEET 1		THIS DRAWING CONTAINS INFORMATION THAT IS PROPRIETARY TO MOLEX INCORPORATED AND SHOULD NOT BE USED WITHOUT WRITTEN PERMISSION				

molex