

DESIGNED AND DIMENSIONED IN INCHES[MILLIMETERS]
ALL DIMENSIONS REFERENCE EXCEPT AS SHOWN

DO NOT SCALE FROM THIS PRINT

292-J-P-EP-ST-CMM-X-X

GENDER
-J: JACK

TYPE
-P: PCB

FINISH
-EP: 50µ" EXTRA HEAVY GOLD
CENTER CONTACT, PASSIVATED
OUTER CONTACT

PACKAGING
-K: INDIVIDUALLY BAGGED
-BLANK: TRAYS

OPTION
-1: OPTION 1 (WITHOUT SCREWS)
-2: OPTION 2 (WITH SCREWS)

TERMINATION
-CMM: COMPRESSION MOUNT
MICROSTRIP

ORIENTATION
-ST: STRAIGHT

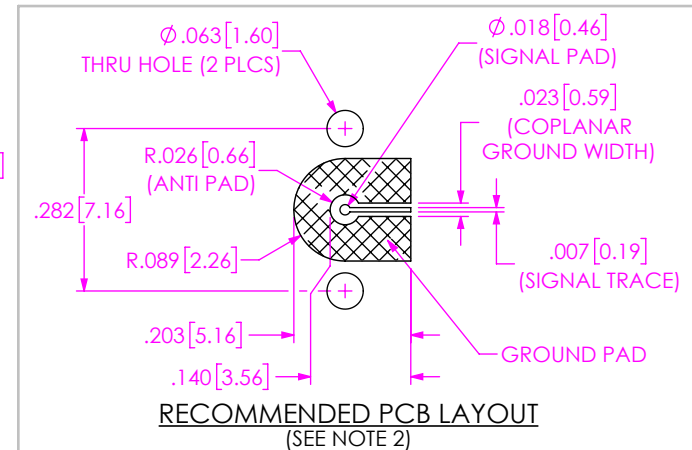
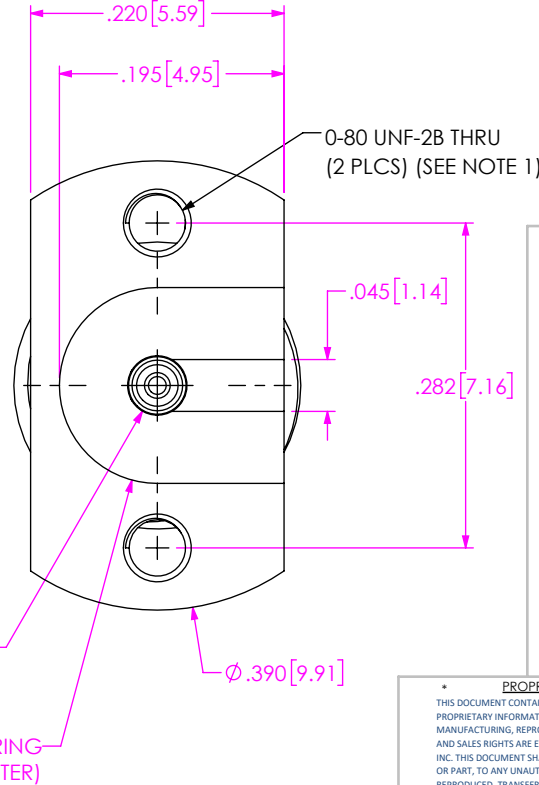
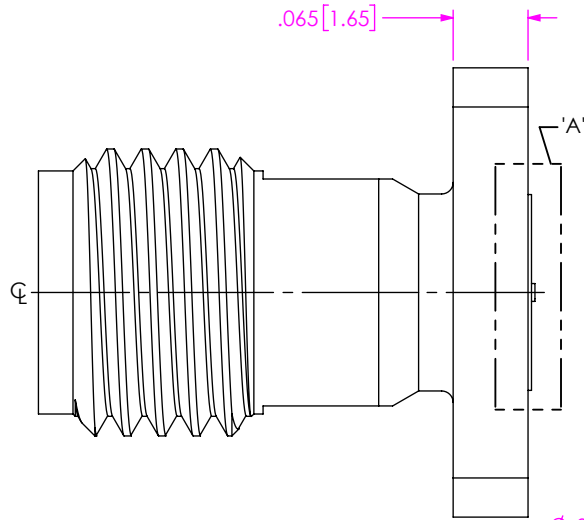
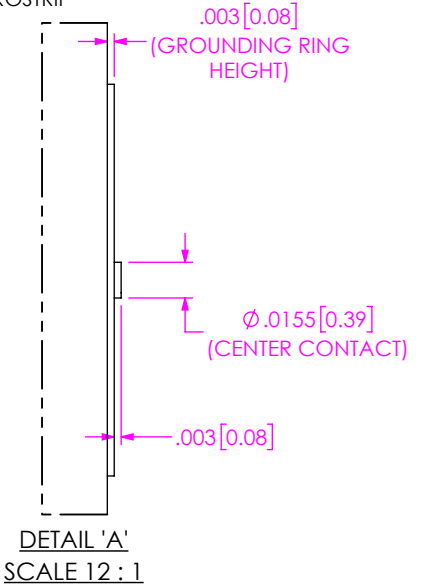
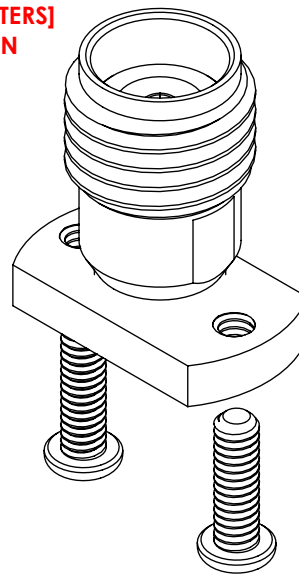
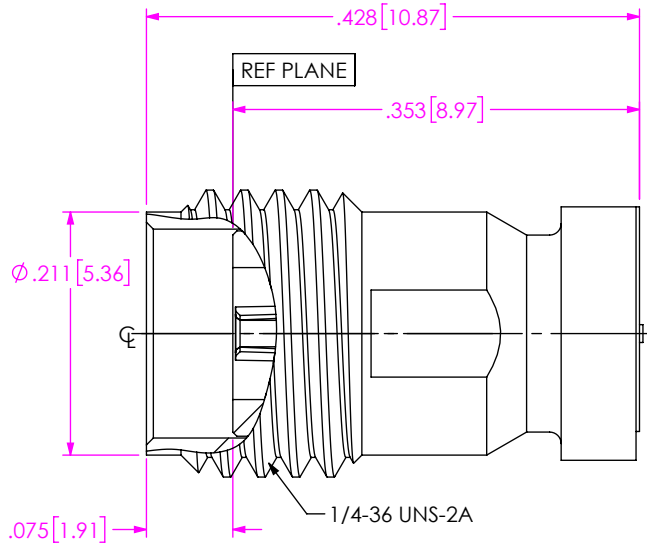


FIG 1
292-J-P-EP-ST-CMM-X SHOWN

Ø.052 [1.31] (GROUNDING RING INSIDE DIAMETER)
R.085 [2.16] (GROUNDING RING OUTSIDE DIAMETER)

NOTES:

1. RECOMMENDED TORQUE 0.5-0.8 INCH-POUNDS.
2. THIS IS A GENERAL FOOTPRINT AND IS NOT OPTIMIZED FOR ELECTRICAL PERFORMANCE, CONTACT SIG@SAMTEC.COM FOR ASSISTANCE WITH ELECTRICAL LAYOUT.

<p>PROPRIETARY NOTE</p> <p>THIS DOCUMENT CONTAINS CONFIDENTIAL AND PROPRIETARY INFORMATION AND ALL DESIGN, MANUFACTURING, REPRODUCTION, USE, PATENT RIGHTS AND SALES RIGHTS ARE EXPRESSLY RESERVED BY SAMTEC, INC. THIS DOCUMENT SHALL NOT BE DISCLOSED, IN WHOLE OR PART, TO ANY UNAUTHORIZED PERSON OR ENTITY NOR REPRODUCED, TRANSFERRED OR INCORPORATED IN ANY OTHER PROJECT IN ANY MANNER WITHOUT THE EXPRESS WRITTEN CONSENT OF SAMTEC, INC.</p>		<p>DO NOT SCALE DRAWING SHEET SCALE: 6:1</p>		<p>DESCRIPTION: 2.92MM ST JACK FOR COMPRESSION MOUNT MICROSTRIP</p>	
<p>MATERIAL:</p> <p>BODY, BUSHING & SCREW: STAINLESS STEEL SOCKET: COPPER ALLOY</p>		<p>DWG. NO. 292-J-P-EP-ST-CMM-X-X</p>		<p>BY: SHERRY W 1/21/2021 SHEET 1 OF 1</p>	