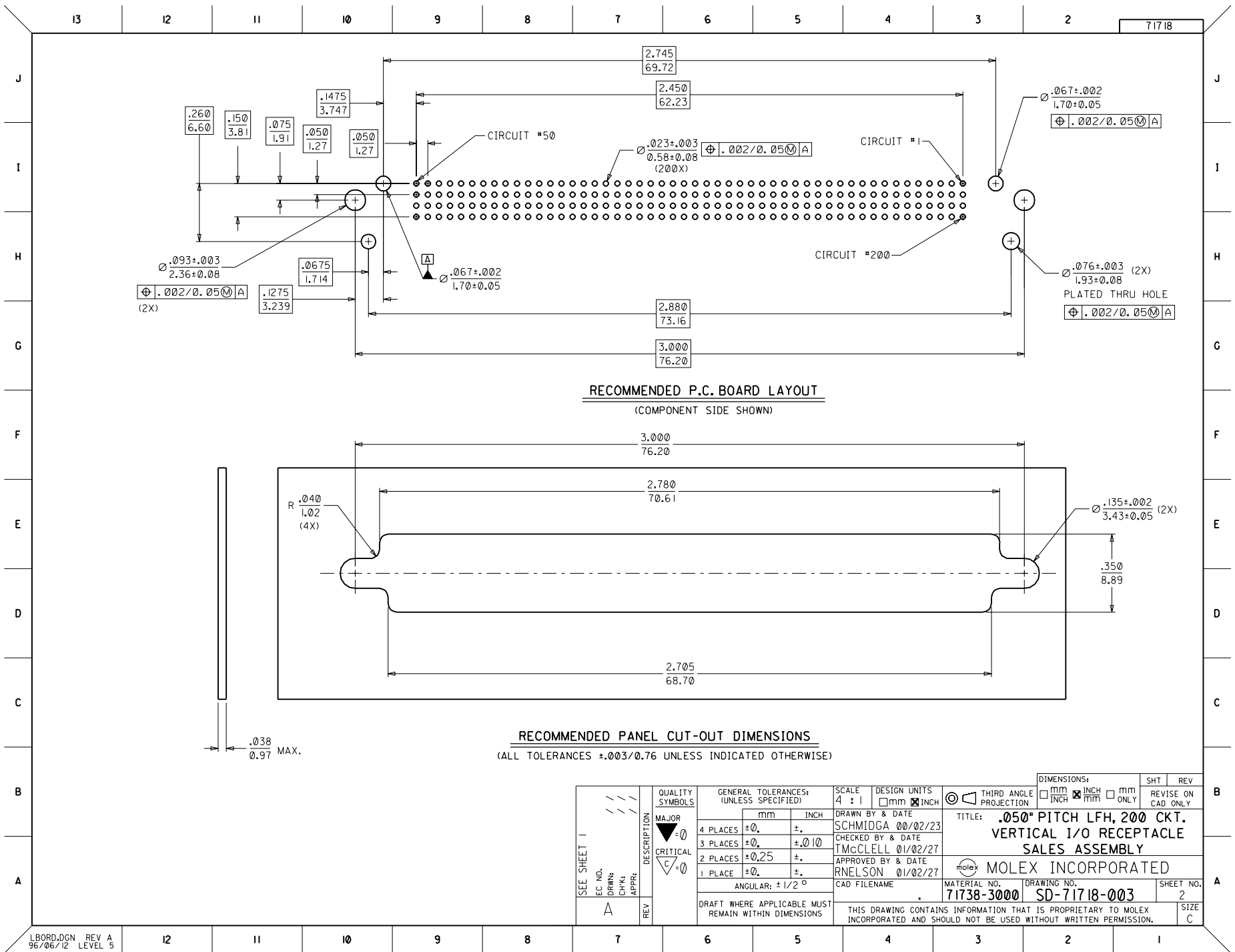


- NOTES:
- MATERIALS:  
HOUSING AND INSERT-MOLDED CONTACTS -- GLASS FILLED POLYMER, BLACK, UL 94V-0.  
TERMINALS -- COPPER ALLOY.  
OUTER SHELL -- LOW-CARBON STEEL.  
HARDWARE -- CARBON STEEL.
  - PLATING:  
TERMINALS -- 30u"/(0.76um) MIN. OF GOLD IN INTERFACE AREA OVER 100u"/(2.50um) MIN. OF TIN/LEAD IN SOLDER TAIL AREA; ALL OVER NICKEL.  
OUTER SHELL -- 10u"/(2.50um) MIN. OF BRIGHT TIN OVER COPPER.  
HARDWARE -- CLEAR CHROMATE.
  - ASSEMBLY CONFORMS TO MOLEX PRODUCT SPECIFICATION #PS-71718-9999.
  - ASSEMBLIES TO BE PACKAGED IN TUBES.
  - HARDWARE KIT PART NUMBER 70982-1007 CAN BE FOUND ON SD-70982-001. HARDWARE SOLD SEPARATELY.
  - SEE SHEET #2 FOR RECOMMENDED BOARD LAYOUT AND PANEL CUT-OUT.

INITIAL RELEASE EC NO. UDT2001-0820 DRW: SCHMIDGA 01/02/26 CHK: TMCLELL 01/02/27 APPR: RNELSON 01/02/27	QUALITY SYMBOLS MAJOR $\blacktriangledown = 0$ CRITICAL $\nabla = 0$	GENERAL TOLERANCES: (UNLESS SPECIFIED) mm      INCH		SCALE 4 : 1	DESIGN UNITS <input type="checkbox"/> mm <input checked="" type="checkbox"/> INCH	THIRD ANGLE PROJECTION <input type="checkbox"/> mm <input checked="" type="checkbox"/> INCH <input type="checkbox"/> mm ONLY	DIMENSIONS: <input type="checkbox"/> mm <input checked="" type="checkbox"/> INCH <input type="checkbox"/> mm ONLY	SHT    REV 1      A
		4 PLACES $\pm 0.$ $\pm .$	DRAWN BY & DATE SCHMIDGA 00/02/23	TITLE: <b>.050" PITCH LFH, 200 CKT. VERTICAL I/O RECEPTACLE SALES ASSEMBLY</b>				
		3 PLACES $\pm 0.$ $\pm .010$	CHECKED BY & DATE TMCLELL 01/02/27	MATERIAL NO.      DRAWING NO.				
		2 PLACES $\pm 0.25$ $\pm .$	APPROVED BY & DATE RNELSON 01/02/27	71738-3000      SD-71718-003	SHEET NO. 1 OF 2			
1 PLACE $\pm 0.$ $\pm .$	ANGLAR: $\pm 1/2^\circ$	CAD FILENAME	THIS DRAWING CONTAINS INFORMATION THAT IS PROPRIETARY TO MOLEX INCORPORATED AND SHOULD NOT BE USED WITHOUT WRITTEN PERMISSION.					
DRAFT WHERE APPLICABLE MUST REMAIN WITHIN DIMENSIONS	SIZE C							



SEE SHEET 1 EC NO. / / / DRWN: / / / CHK: / / / APPR: / / / REV: A	QUALITY SYMBOLS MAJOR $\nabla=0$ CRITICAL $\nabla=0$	GENERAL TOLERANCES: (UNLESS SPECIFIED)		SCALE 4 : 1	DESIGN UNITS <input type="checkbox"/> mm <input checked="" type="checkbox"/> INCH	DIMENSIONS: <input type="checkbox"/> mm <input checked="" type="checkbox"/> INCH <input type="checkbox"/> mm ONLY	SHT. REV REVISE ON CAD ONLY	
		4 PLACES $\pm 0.$	3 PLACES $\pm 0.$	2 PLACES $\pm 0.25$	1 PLACE $\pm 0.$	DRAWN BY & DATE SCHMIDGA 00/02/23	TITLE: <b>.050" PITCH LFH, 200 CKT.          VERTICAL I/O RECEPTACLE          SALES ASSEMBLY</b>	
		ANGULAR: $\pm 1/2^\circ$		DRAFT WHERE APPLICABLE MUST REMAIN WITHIN DIMENSIONS		CHECKED BY & DATE TMCLELL 01/02/27	MOLEX INCORPORATED	
		CAD FILENAME		MATERIAL NO. 71738-3000	DRAWING NO. SD-71718-003	SHEET NO. 2	SIZE C	