

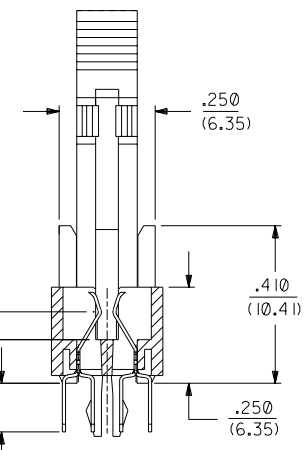
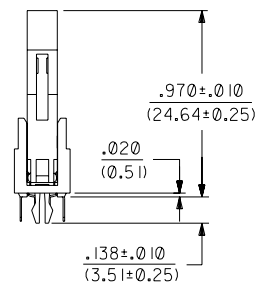
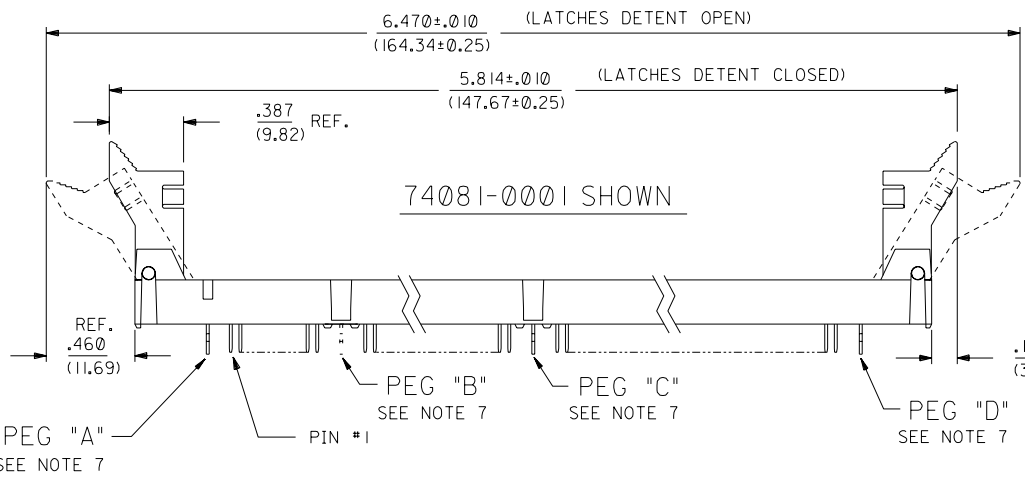
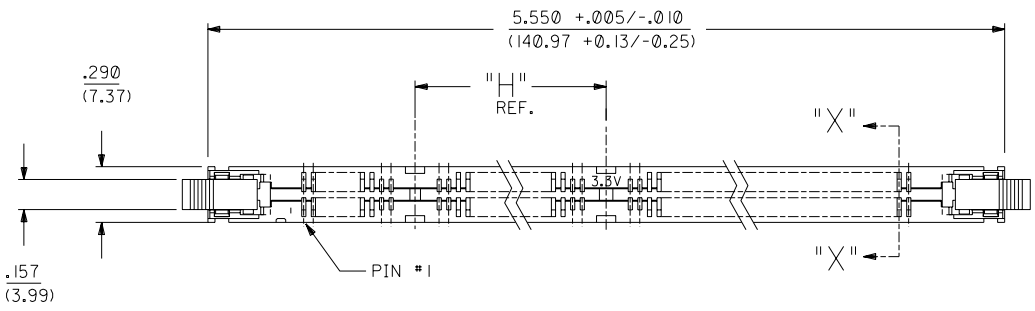
- NOTES:
- CARD SLOT ACCEPTS $.050 \pm .004 / (1.27 \pm 0.10)$ MODULE THICKNESS. (MEASURED OVER P.C. PADS).
 - RECOMMENDED PCB THICKNESS: $.062 \pm .007 / (1.57 \pm 0.18)$
 - REFER TO PRODUCT SPEC PS-71243-9999 FOR PERFORMANCE SPECIFICATIONS.
 - PRODUCT IS PACKAGED IN TRAYS PER PK-70873-0609.
 - RECOMMENDED MODULE LAYOUT SHALL BE PER JEDEC MO-161.
 - RECOMMENDED PLATING ON MODULE PADS: 30 MICROINCH/(0.76 MICROMETER) MINIMUM HARD GOLD (Au) OVER 79 MICROINCH/(2.0 MICROMETER) MINIMUM NICKEL (Ni).
 - SEE CHART FOR FORK/HOLE PRESENCE AND PLATING OPTION.
 - PRODUCT WILL HAVE DATE CODE STAMPED ON SIDE OF HOUSING.

MATERIALS:
 HOUSING - GLASS FILLED HIGH TEMPERATURE NYLON, UL 94V-0, COLOR: BLACK.
 TERMINAL - PHOSPHOR BRONZE
 LATCHES - GLASS FILLED HIGH TEMPERATURE NYLON, UL 94V-0, COLOR: IVORY.
 FORKLOCKS - STAINLESS STEEL

PLATING:
 CONTACT AREA: GOLD (Au) FLASH: THICKNESS=2-10 MICROINCH/(0.05-0.25 MICROMETER),
 OVER PALLADIUM-NICKEL (Pd-Ni):
 THICKNESS=30 MICROINCH/(0.76 MICROMETER) MINIMUM.

SOLDER TAILS: TIN (Sn); THICKNESS=150 MICROINCH/(3.81 MICROMETER) MINIMUM.
 UNDERPLATE: NICKEL (Ni) OVER ENTIRE CONTACT.
 FORKLOCKS: NONE

NOTE FOR LEAD FREE CONVERSION:
 THE PRIMARY SHIPPING CARTON WILL BE LABELED "COMPLIANT TO ROHS DIRECTIVE 2002/95/EC AND ELV ANNEX II OF DIRECTIVE 2000/53/EC". CARTONS WITHOUT THIS LABEL MAY CONTAIN PRODUCT WITH LEAD.



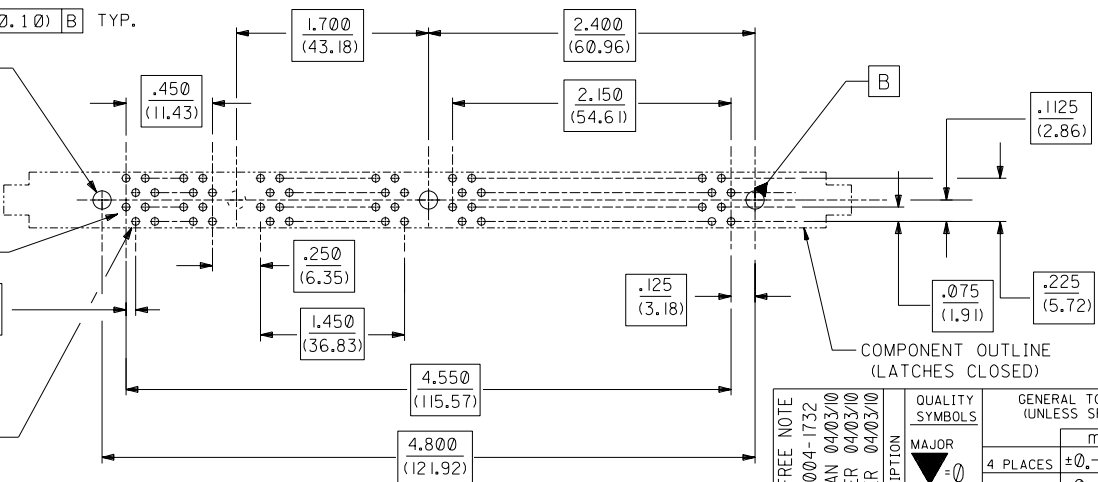
$\text{Ø} .004 / (0.10) \text{ B TYP.}$

$.096 \pm .002$
 (2.44 ± 0.05)
 TYP.
 SEE NOTE 7

$.050$
 (1.27)

$.030 \pm .003$
 (0.76 ± 0.08)
 TYP.

$\text{Ø} .004 / (0.10) \text{ B}$



RECOMMENDED
 P.C. BOARD HOLE PATTERN
 (CONNECTOR SIDE)

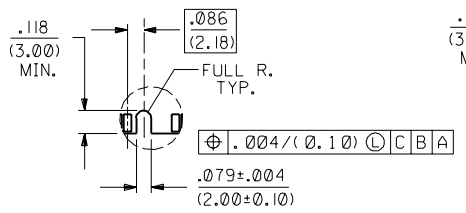
COMPONENT OUTLINE
 (LATCHES CLOSED)

ADD LEAD FREE NOTE EC NO. UCP2004-1732 DRAWN: DMORGAN 04/03/10 CHK: BBARKER 04/03/10 APPR: SWILLER 04/03/10	QUALITY SYMBOLS	GENERAL TOLERANCES: (UNLESS SPECIFIED)	SCALE 2 : 1	DESIGN UNITS <input type="checkbox"/> mm <input checked="" type="checkbox"/> INCH	THIRD ANGLE PROJECTION
	MAJOR MINOR CRITICAL	mm INCH	DRAWN BY & DATE DMORGAN 98/12/11	CHECKED BY & DATE BBARKER 98/12/11	APPROVED BY & DATE BRINKMAN 98/12/11
REV	DESCRIPTION	ANGULAR: $\pm 1/2^\circ$	CAD FILENAME	MATERIAL NO.	DRAWING NO.
D2		DRAFT WHERE APPLICABLE MUST REMAIN WITHIN DIMENSIONS	THIS DRAWING CONTAINS INFORMATION THAT IS PROPRIETARY TO MOLEX INCORPORATED AND SHOULD NOT BE USED WITHOUT WRITTEN PERMISSION.		SIZE C

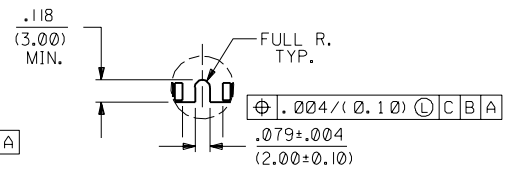
DIMENSIONS: <input type="checkbox"/> mm <input checked="" type="checkbox"/> INCH <input type="checkbox"/> mm ONLY		REVISE ON CAD ONLY
TITLE: ASSY, TALL LATCH RAM 168 CKT, .050/(1.27) PITCH MULTI-KEY, NYLON SALES DRAWING		
MOLEX MOLEX INCORPORATED		
SEE CHART	SD-74081-001	SHEET NO. 1 OF 2

MAT'L NO. 74081-0***	CKT SIZE	DESCRIPTION	COLOR	FUNCTION KEY	VOLTAGE KEY	PEG 'A'	PEG 'B'	PEG 'C'	PEG 'D'	DIM. 'H'	DIM. 'T'	CONTACT AREA PLATING
-0001	168	3.3 VOLT STD DRAM	BLACK	CENTER	CENTER	FORK	NONE	FORK	FORK	.1700 (43.18)	.127 (3.23)	OPTION A
-0008	168	3.3 VOLT UNBUFFERED	BLACK	OFFSET RIGHT	CENTER	FORK	NONE	FORK	FORK	.1661 (42.19)	.105 (2.67)	OPTION A
-0011	168	3.3 VOLT UNBUFFERED	BLACK	OFFSET RIGHT	CENTER	FORK	NONE	FORK	FORK	.1661 (42.19)	.127 (3.23)	OPTION A
-0012	168	3.3 VOLT STD DRAM	BLACK	CENTER	CENTER	FORK	NONE	FORK	FORK	.1700 (43.18)	.105 (2.67)	OPTION A
-0020	168	3.3 VOLT STD DRAM	BLACK	CENTER	CENTER	NONE	FORK	FORK	FORK	.1700 (43.18)	.127 (3.23)	OPTION A
-0021	168	3.3 VOLT STD DRAM	BLACK	CENTER	CENTER	NONE	FORK	FORK	NONE	.1700 (43.18)	.127 (3.23)	OPTION A

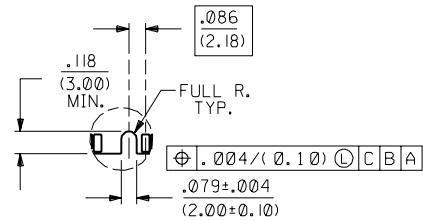
- NOTES:
1. STRAIGHTNESS OF MODULE APPLIES TO THE AREA FROM THE BOTTOM OF THE CARD UP .157/(4.00).
 2. IF TIE BARS ARE ATTACHED TO PADS, THE TIE BAR SHOULD BE ON AN INTERNAL LAYER, SO THAT THE REMNANT CANNOT CAUSE DAMAGE TO THE CONTACTS.



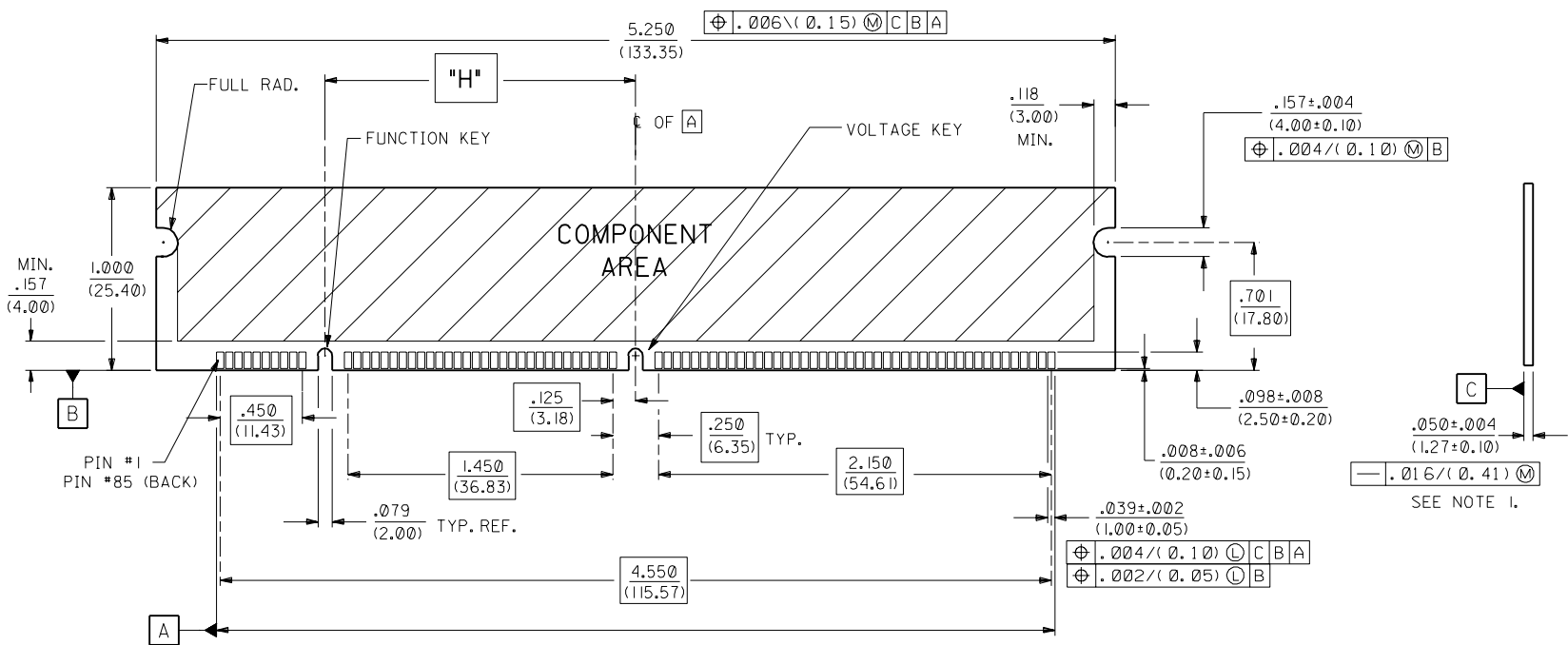
OFFSET LEFT KEY



CENTERED KEY



OFFSET RIGHT KEY



RECOMMENDED MODULE LAYOUT
168 CKT 3.3V STD DRAM SHOWN

ADD P/N -0012 EC NO. UDT2000-0365 DRW:DMORGAN 99/10/18 CHK: BBARKER 99/10/18 APPR:BRINKMAN 99/10/18	DESCRIPTION	QUALITY SYMBOLS	GENERAL TOLERANCES: (UNLESS SPECIFIED)	SCALE	DESIGN UNITS	DIMENSIONS:	SHT	REV
		MAJOR MINOR	mm INCH	1:1	mm INCH	mm INCH mm ONLY		
REV	DESCRIPTION	4 PLACES ±0.-- ±.--	4 PLACES ±0.-- ±.--	DRAWN BY & DATE	DMORGAN 98/07/28	TITLE: ASSY, TAIL LATCH RAM		
		3 PLACES ±0.-- ±.005	3 PLACES ±0.-- ±.005	CHECKED BY & DATE	BBARKER 98/07/28	168 CKT, .050/(1.27) PITCH		
		2 PLACES ±0.13 ±.01	2 PLACES ±0.13 ±.01	APPROVED BY & DATE	BRINKMAN 98/07/28	MULTI-KEY, NYLON SALES DRAWING		
		1 PLACE ±0.25 ±.--	1 PLACE ±0.25 ±.--	CAD FILENAME		MOLEX INCORPORATED		
		ANGULAR: ± 1/2 °	ANGULAR: ± 1/2 °	MATERIAL NO.	SEE CHART	DRAWING NO.	SD-74081-001	SHEET NO.
				THIS DRAWING CONTAINS INFORMATION THAT IS PROPRIETARY TO MOLEX INCORPORATED AND SHOULD NOT BE USED WITHOUT WRITTEN PERMISSION.				2
								SIZE C