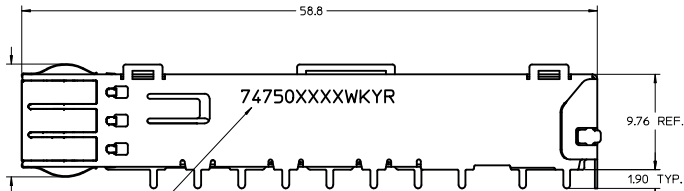
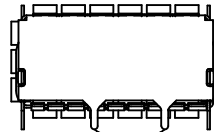
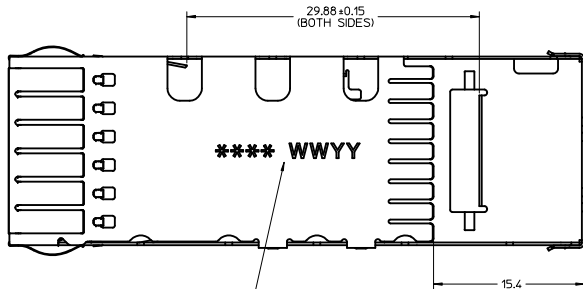


11.53 REF. (EMI FINGERS UNCOMPRESSED)

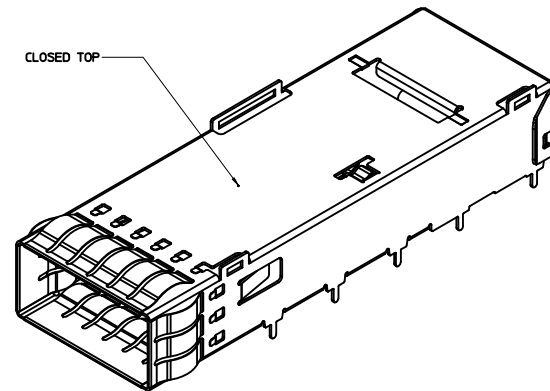


PART NO. AND WEEK/YEAR DATE CODE TO BE PRINTED ON SIDE OF COMPLETED CAGE ASSEMBLY APPROXIMATELY AS SHOWN. SEE TABLE BELOW FOR DATE CODE INFORMATION.

WEEK/YEAR DATE CODE TABLE	
WEEK	01 THRU 52 EXAMPLE: 01 = FIRST WEEK OF YEAR 52 = LAST WEEK OF YEAR
YEAR	10, 11, 12 ETC. EXAMPLE: YEAR 2010 = 10



REAR PINS ARE OPTIONAL (SEE CHART)



NOTES:

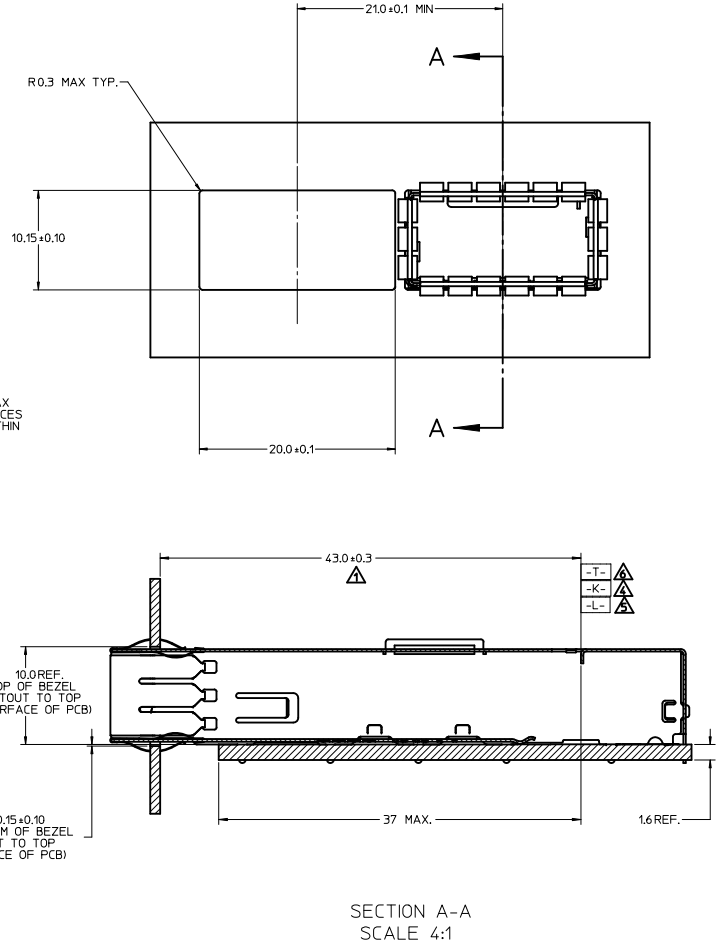
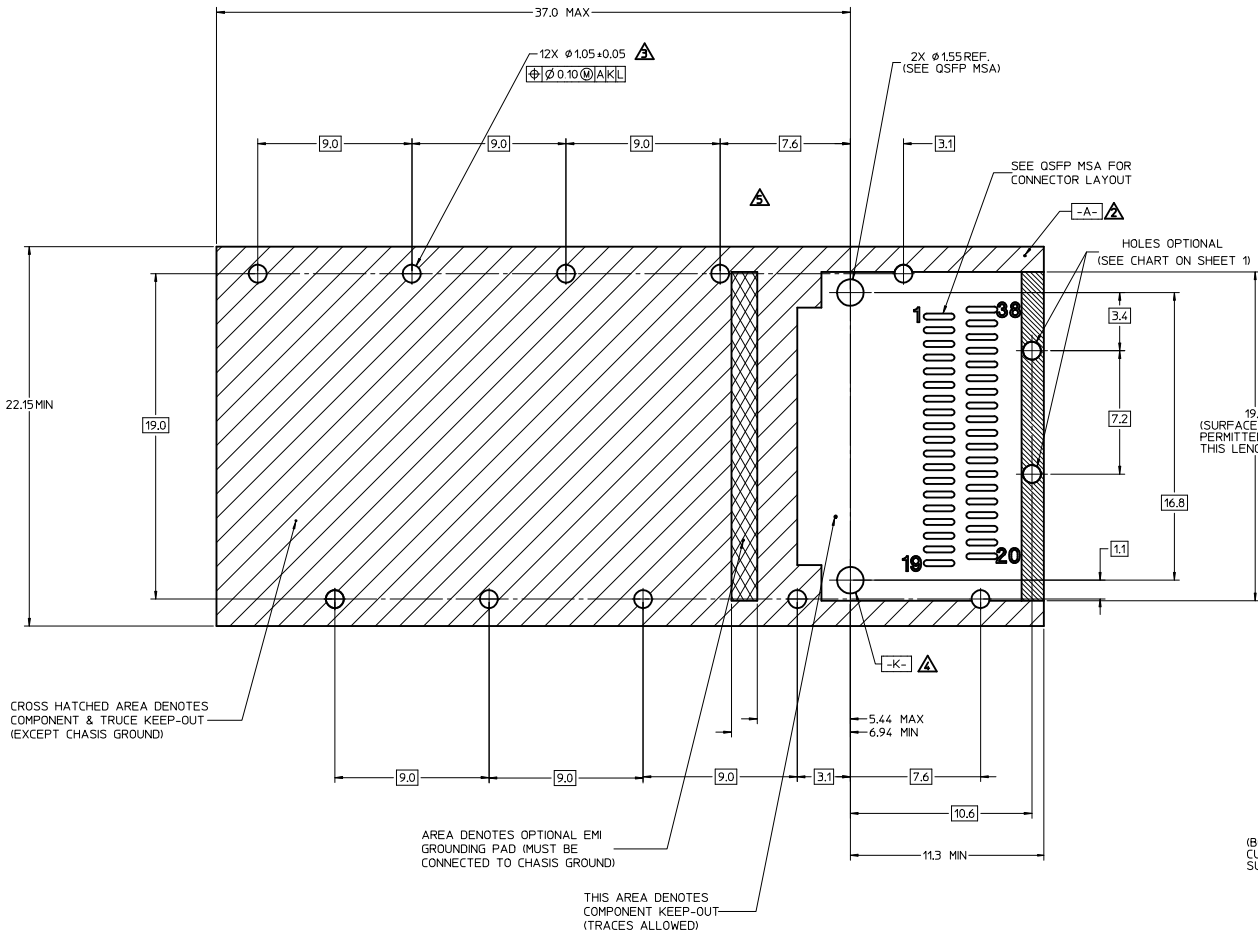
1. SOLDER POST LEGS 1.90mm [0.075"] LONG
2. MATERIAL: COPPER ALLOY.  
PLATING: SEE TABLE.
3. REFERENCE DOCUMENTS:  
PRODUCT SPECIFICATION: SFF-8436
4. CAGE COMPATIBLE WITH LIGHTPIPE ASSY (SD-74750-0030)
5. LEAD FREE, NO RoHS EXEMPTIONS.

FINISHED ASSEMBLY P/N	DESCRIPTION	# OF REAR LEGS	PLATING	HEAT SINK OPENING
747500051	QSFP+ 1X1 CAGE W/ EMI SPRING FINGER - SOLDER POST	2	NICKEL	CLOSED TOP
747500053	QSFP+ 1X1 CAGE W/ EMI SPRING FINGER - SOLDER POST	2	MATTE TIN	CLOSED TOP
747500056	QSFP+ 1X1 CAGE W/ EMI SPRING FINGER - SOLDER POST	2	BRIGHT TIN	CLOSED TOP

<b>DATE CODE &amp; NOTES</b> IEC NO: CPG2012-0844 2011/04/06 DRWN:BSWAJA CHKD:CHIRSCHY 2012/02/22 APPR:KLLOYD 2012/03/20	<b>QUALITY SYMBOLS</b> ∇=0 ∇=0 ∇=0	<b>GENERAL TOLERANCES (UNLESS SPECIFIED)</b>		DIMENSION STYLE <b>MM ONLY</b>	SCALE 4:1	DESIGN UNITS METRIC	THIRD ANGLE PROJECTION	
		4 PLACES ± mm ± INCH 3 PLACES ± --- ± --- 2 PLACES ± 0.13 ± --- 1 PLACE ± 0.25 ± --- 0 PLACE ± --- ± ---	DRAWN BY CHIRSCHY	DATE 2009/06/08	TITLE QSFP+ CAGE ASSEMBLY W/ SPRING FINGERS & SOLDER POST LEGS			
		ANGULAR ± 1 ° DRAFT WHERE APPLICABLE MUST REMAIN WITHIN DIMENSIONS	CHECKED BY CJAMESON	DATE 2009/06/08	APPROVED BY RMAHMOOD			
		MATERIAL NO. <b>SEE SHEET 1</b>	DATE 2009/06/08	DOCUMENT NO. SD-74750-0051	SHEET NO. 1 OF 2			

THIS DRAWING CONTAINS INFORMATION THAT IS PROPRIETARY TO MOLEX INCORPORATED AND SHOULD NOT BE USED WITHOUT WRITTEN PERMISSION

# PCB LAYOUT FOR SINGLE SIDED APPLICATIONS



SECTION A-A  
SCALE 4:1

- NOTES:**
1. DATUM -A- IS TOP SURFACE OF HOST BOARD PER SFF-8436
  2. FINISHED HOLE SIZE (AFTER PLATING)
  3. DATUM -K- IS HOST BOARD THRU HOLE #1 TO ACCEPT CONNECTOR GUIDE POST PER SFF-8436
  4. DATUM -L- IS HOST BOARD THRU HOLE #2 TO ACCEPT CONNECTOR GUIDE POST PER SFF-8436
  5. DATUM -T- IS HARD STOP ON CAGE PER SFF-8436

<b>DATE CODE &amp; NOTES</b> IEC NO: CPG2012-0844 DRWNSWAJA 2011/04/06 CHYKCHRISCHY 2012/02/22 APPR:KLLOYD 2012/03/20	<b>QUALITY SYMBOLS</b> ∇=0 ∇=0 ∇=0	<b>GENERAL TOLERANCES (UNLESS SPECIFIED)</b>		<b>DIMENSION STYLE</b> MM ONLY	SCALE 1:1	DESIGN UNITS METRIC	THIRD ANGLE PROJECTION		
		4 PLACES ± --- INCH	3 PLACES ± --- INCH	2 PLACES ± 0.13 INCH	1 PLACE ± 0.25 INCH	0 PLACE ± --- INCH	DRAWN BY DATE CHIRSCHY 2009/06/08		TITLE QSFP+ CAGE ASSEMBLY W/ SPRING FINGERS & SOLDER POST LEGS <b>molex</b>
		ANGULAR ± 1 °		DRAFT WHERE APPLICABLE MUST REMAIN WITHIN DIMENSIONS		APPROVED BY DATE RMAHMOOD 2009/06/08		MATERIAL NO.	
		SEE SHEET 1		DOCUMENT NO. SD-74750-0051		SHEET NO. 2 OF 2			
THIS DRAWING CONTAINS INFORMATION THAT IS PROPRIETARY TO MOLEX INCORPORATED AND SHOULD NOT BE USED WITHOUT WRITTEN PERMISSION									