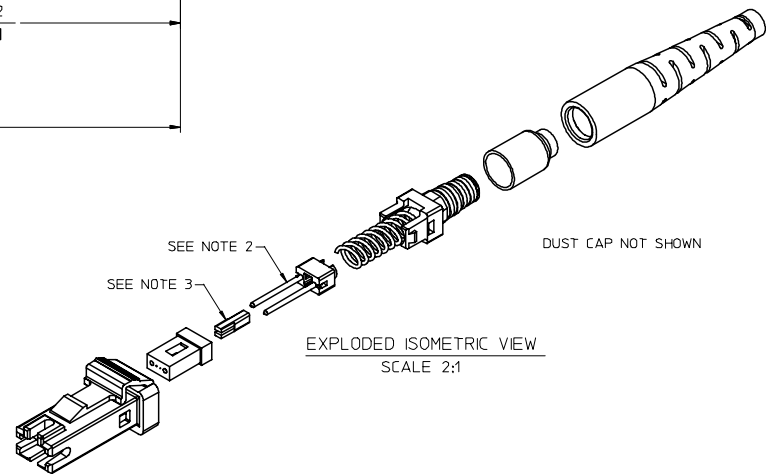
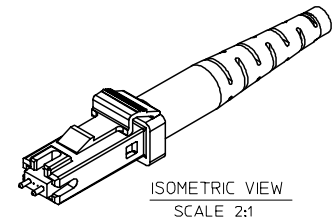
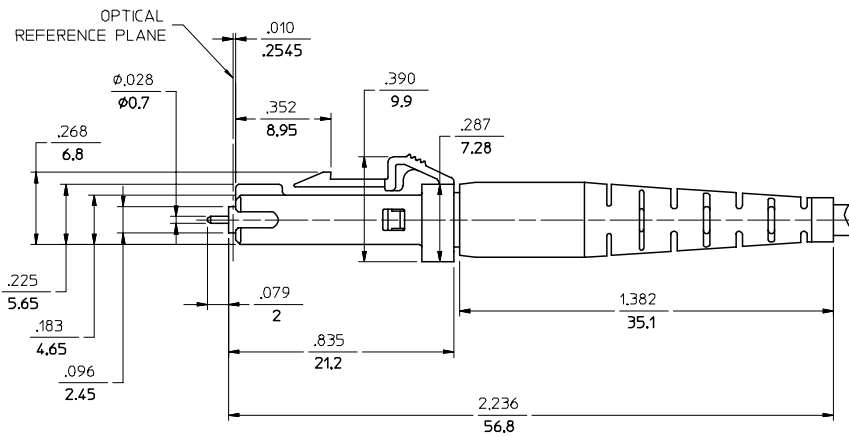
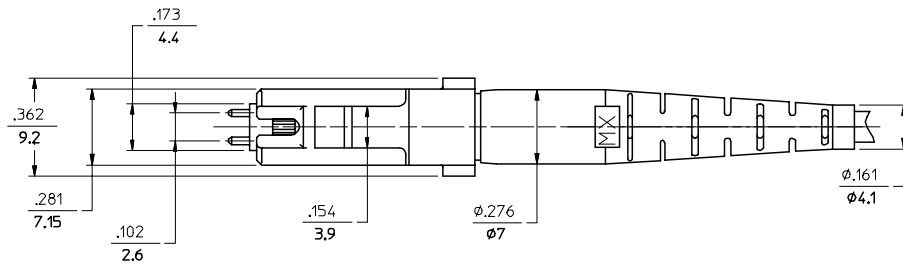


| CONNECTOR P/N | BOOT COLOR | CONNECTOR TYPE |
|---------------|------------|----------------|
| 86002-3000    | BEIGE      | MALE MM        |
| 86003-3000    |            | FEMALE MM      |
| 86002-5000    | BLUE       | MALE SM        |
| 86003-5000    |            | FEMALE SM      |
| 86002-3030    | BLACK      | MALE MM        |
| 86002-3040*   |            | MALE MM        |
| 86003-3030    |            | FEMALE MM      |
| 86003-3040*   |            | FEMALE MM      |
| 86002-3031    | RED        | MALE MM        |
| 86003-3033    |            | FEMALE MM      |
| 86002-3032    | BLUE       | MALE MM        |
| 86003-3034    |            | FEMALE MM      |



AVAILABLE CABLE TYPES

| CABLE TYPE 1                         | CABLE TYPE 2                     | CABLE TYPE 3                      |
|--------------------------------------|----------------------------------|-----------------------------------|
| 2 FIBER DUAL LINK WITH Ø2.8mm JACKET | 3.5mm X 1.6mm<br>2 FIBER ZIFCORD | 2 FIBER RIBBON WITH Ø2.9mm JACKET |

NOTES:

- ALL DIMENSIONS ARE GIVEN IN  $\frac{\text{INCHES}}{\text{mm}}$
- MALE CONNECTOR SHOWN. FEMALE CONNECTOR DOES NOT CONTAIN PINS.
- CABLE TYPE 1 & 2 DO NOT REQUIRE FERRULE BOOT.
- SEE PROCEDURE 0A1131 FOR ASSEMBLY INSTRUCTIONS.
- \*5. P/N 86002-3040 AND 86003-3040 ARE BULK PACKED.

|   |                      |  |   |                    |                 |                        |
|---|----------------------|--|---|--------------------|-----------------|------------------------|
| ENTER DESCRIPTION<br>EC NO: MF2005-0347<br>DRWNLKATARZI<br>CHKD: 2004/12/07<br>APPR: IJUMIN 2004/12/07<br>REV DESCRIPTION | QUALITY SYMBOLS      | GENERAL TOLERANCES (UNLESS SPECIFIED)                | DIMENSION STYLE   | SCALE              | DESIGN UNITS    | THIRD ANGLE PROJECTION |
|   |                      | mm INCH  | IN/MM   | 3:1                | INCH            |                        |
|   |                      | 4 PLACES ± --- ± ---                                 | DRAWN BY DATE   | TITLE              | MT-RJ CONNECTOR |                        |
|   |                      | 3 PLACES ± --- ± ---                                 | CHECKED BY DATE   | MOLEX INCORPORATED |                 |                        |
|   | 2 PLACES ± --- ± --- | APPROVED BY DATE                                     | MATERIAL NO.  | DOCUMENT NO.       | SHEET NO.       |                        |
|   | 1 PLACE ± --- ± ---  | ANGULAR ±1/2°  | SEE TABLE   | 8600X-X0X0CD       | 1 OF 1          |                        |
|   |                      | DRAFT WHERE APPLICABLE MUST REMAIN WITHIN DIMENSIONS | THIS DRAWING CONTAINS INFORMATION THAT IS PROPRIETARY TO MOLEX INCORPORATED AND SHOULD NOT BE USED WITHOUT WRITTEN PERMISSION |                    |                 |                        |