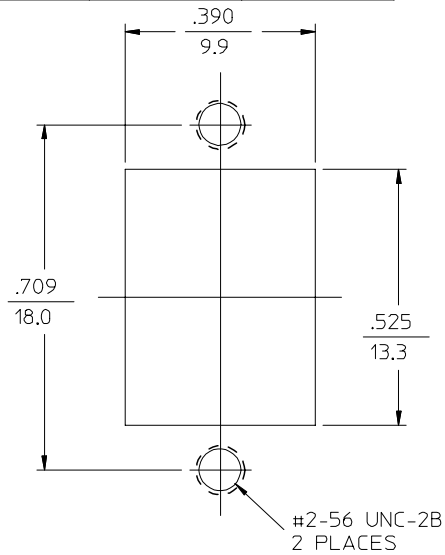
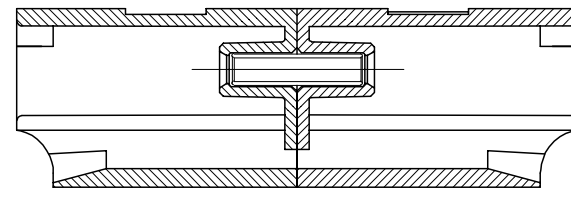
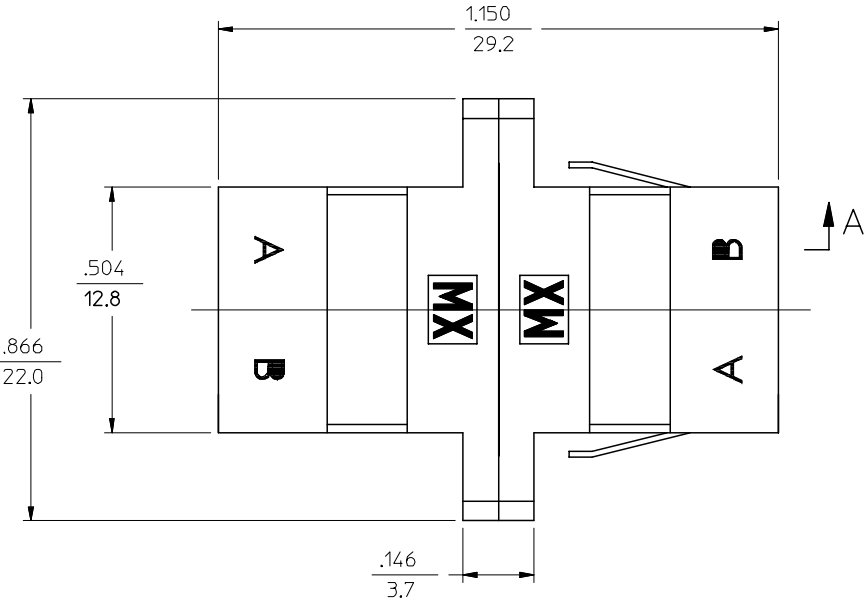
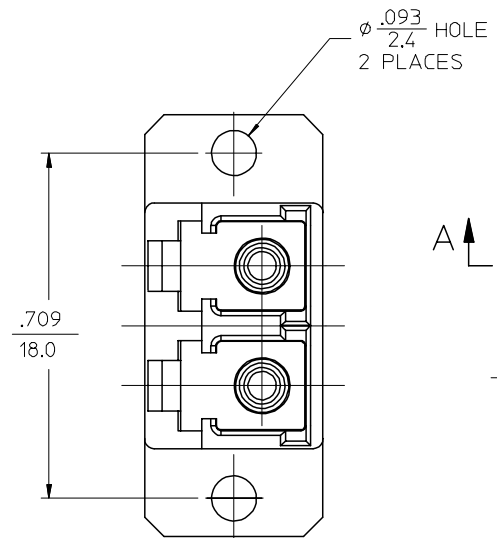


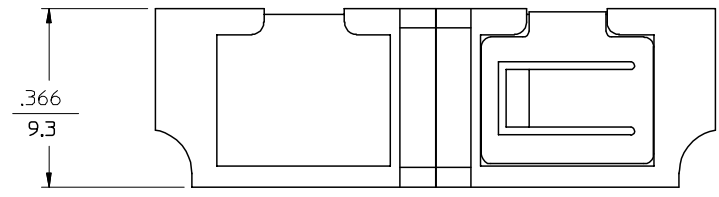
LC ADAPTER ASSY. P/N	COLOR	LC SLEEVE MATERIAL
86126-1300	BLUE	Zr
86126-1310*		
86126-0310	BEIGE	Ph. Bronze
86126-0320*		
86126-1350	GREEN	Zr
86126-1330	BEIGE	Zr
86126-1340	BLACK	Zr



RECOMMENDED MOUNTING CUTOUT FOR  $\frac{.063}{1.6}$  THICK PANEL



SECTION A-A



- NOTES:
- ALL DIMENSIONS ARE FOR REFERENCE ONLY.
  - ALL DIMENSIONS ARE GIVEN IN  $\frac{\text{INCHES}}{\text{mm}}$ .
  - ASSEMBLED DUST CAP NOT SHOWN.
- \*4. P/N 86126-0320 AND P/N 86126-1310 ARE BULK PACKED.

ENTER DESCRIPTION EC NO: MF2005-0347 TDR: WNLKATARZI 2004/12/07 CHKD: 2004/12/07 APPR: IGUMIN 2004/12/07	QUALITY SYMBOLS ▽=0 ▽=0	GENERAL TOLERANCES (UNLESS SPECIFIED)		DIMENSION STYLE IN/MM	SCALE 4:1	DESIGN UNITS INCH	THIRD ANGLE PROJECTION		
		4 PLACES ± --- ± ---	3 PLACES ± --- ± ---	2 PLACES ± --- ± ---	1 PLACE ± --- ± ---	DRAWN BY BKIM	DATE 11/24/99	TITLE LC DUPLEX ADAPTER (STANDARD FLANGE/ SC FOOT PRINT)	
		ANGULAR ±1/2°				CHECKED BY	DATE	APPROVED BY SMIGO	
		DRAFT WHERE APPLICABLE MUST REMAIN WITHIN DIMENSIONS				MATERIAL NO. SEE TABLE	DATE 12/20/99	DOCUMENT NO. 86126-X3X0CD	SHEET NO. 1 OF 1