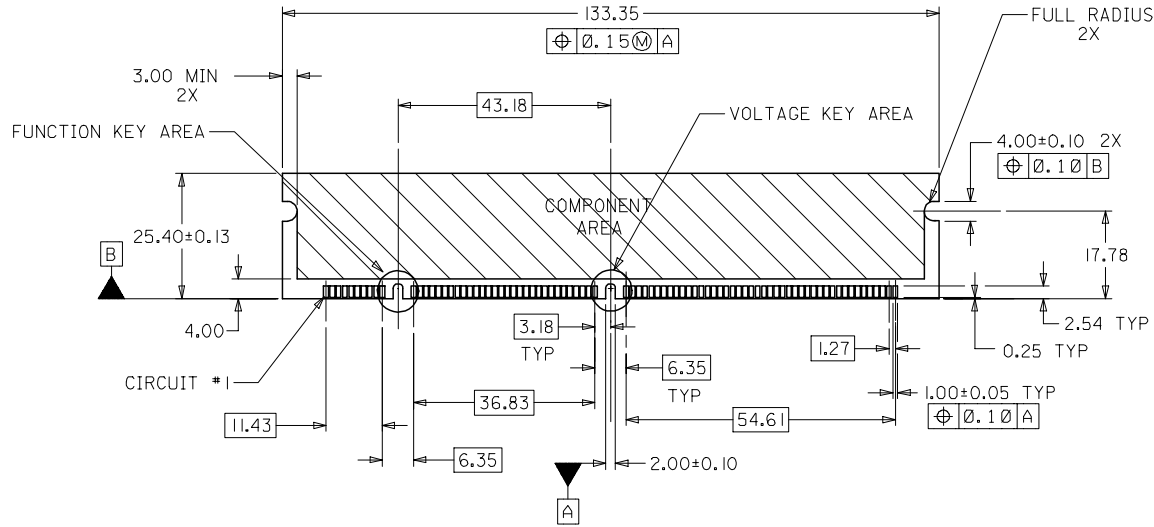


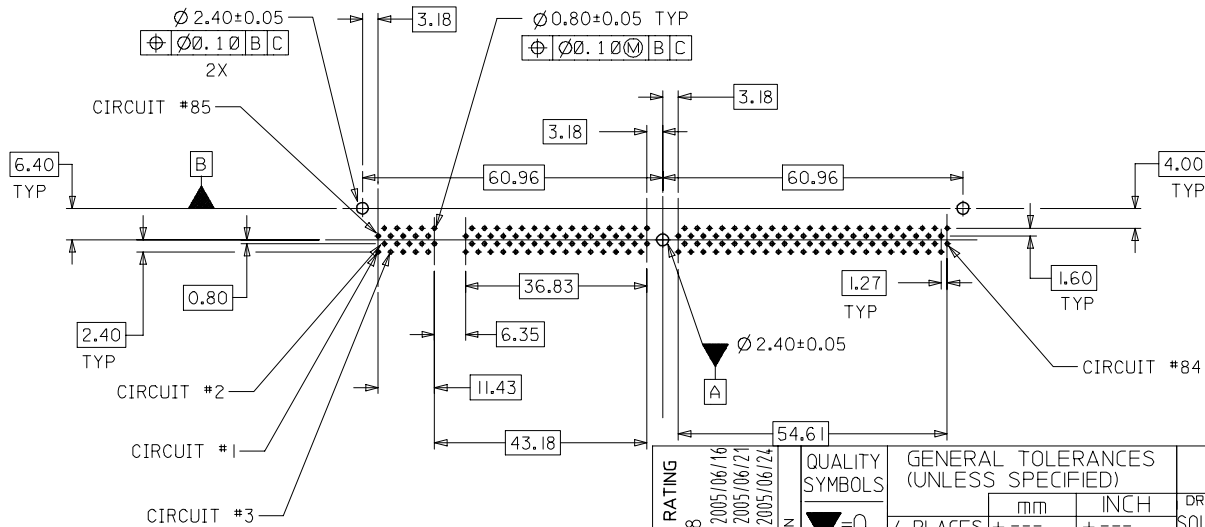
NOTES:

- PRODUCT SPEC PS-87609-002 APPLIES.
- PRODUCT IS PACKAGED IN TRAYS.
- MATERIALS:
  - HOUSING- HIGH-TEMP THERMOPLASTIC, UL 94V-0
  - TERMINAL- PHOSPHOR BRONZE
  - LATCHES - HIGH-TEMP THERMOPLASTIC, UL 94V-0
  - FORKLOCKS - COPPER ALLOY OR STEEL ALLOY
  - BASE-PLATE - HIGH-TEMP THERMOPLASTIC, UL 94V-0
  - COVER - HIGH-TEMP THERMOPLASTIC, UL 94V-0
- PLATING:
  - CONTACT AREA: SEE TABLE ON SHEET 3 OF 3 FOR GOLD PLATING OPTION AT CONTACT AREA
  - SOLDER TAIL: 75uIN/(1.91uM) MIN. TIN/LEAD OR TIN
  - UNDERPLATE: 50uIN/(1.27uM) MIN. NICKEL

ADD FLAMMABILITY RATING EC NO: S2005-0928 2005/06/16 DRWN:SHLENI 2005/06/21 CHKD:SRAMESH 2005/06/21 APPR:GJLEE 2005/06/24	QUALITY SYMBOLS ▽=0 ▽C=0	GENERAL TOLERANCES (UNLESS SPECIFIED)		DIMENSION STYLE MM ONLY		SCALE NTS	DESIGN UNITS METRIC	THIRD ANGLE PROJECTION		
			mm	INCH	DRAWN BY SQUEK	DATE 2000/01/21	SALES DRAWING DIMM, 1.27MM PITCH 168 CKTS, R/A			
		4 PLACES ± ---	± ---	± ---	CHECKED BY KCLING	DATE 2000/03/01				
		3 PLACES ± ---	± ---	± ---	APPROVED BY SKTOH	DATE 2000/03/03	MOLEX INCORPORATED			
D1	REV	DRAFT WHERE APPLICABLE MUST REMAIN WITHIN DIMENSIONS		SIZE A3	SEE TABLE	DOCUMENT NO. SD-87609-001	SHEET NO. 1 OF 3			

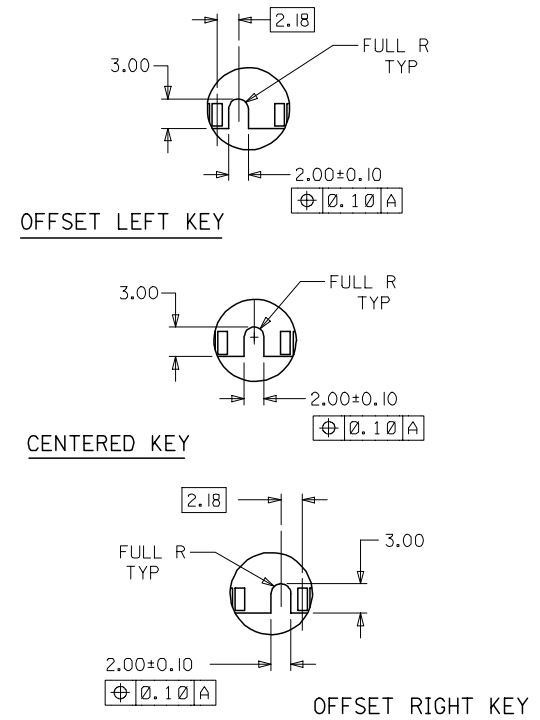


**RECOMMENDED MODULE LAYOUT**  
(PER JEDEC STANDARD MO-161, I68 CKT. 3.3V)



**RECOMMENDED P.C. BOARD HOLE PATTERN**  
(CONNECTOR SIDE)

**FUNCTION KEY AREA OPTIONS**  
(REFER ALSO TO TABLE ON SHT. 3)



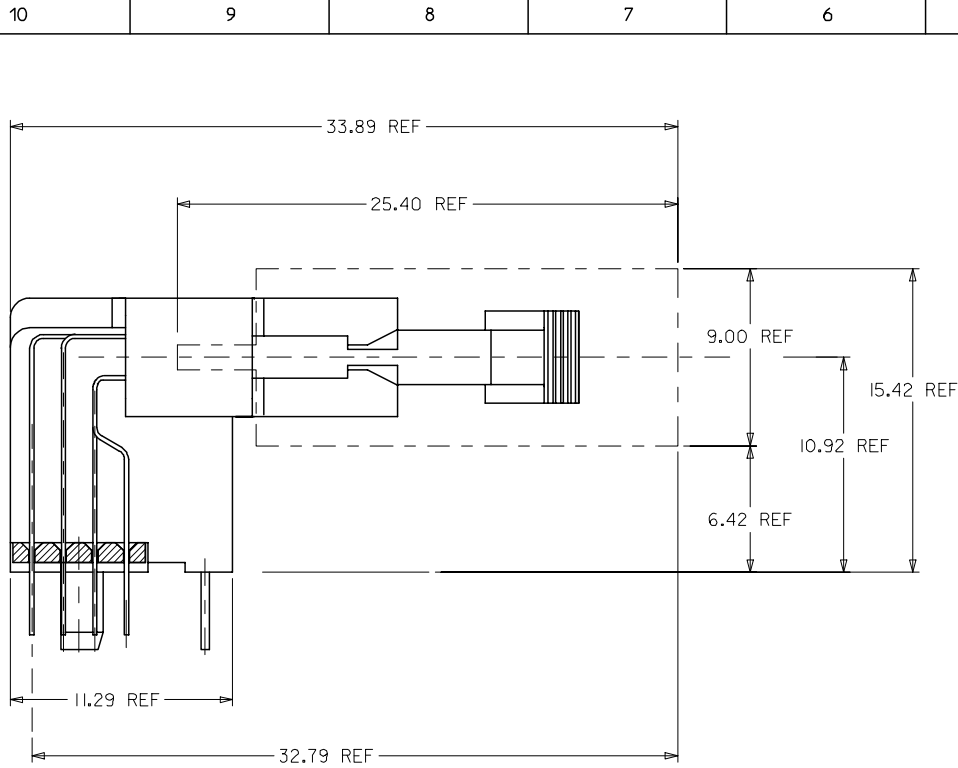
- NOTES:**
1. STRAIGHTNESS OF MODULE APPLIES TO THE AREA FROM THE BOTTOM OF THE CARD UP 4.00(.157)
  2. RECOMMENDED PLATING ON MODULE PADS:  
0.76 MICROMETER(30 MICROINCH) MINIMUM HARD GOLD OVER 2.0 MICROMETER(79 MICROINCH) MINIMUM NICKEL.

ADD FLAMMABILITY RATING	QUALITY SYMBOLS
EC NO: S2005-0928	▽=0
DRWN:SHLEH	▽=0
CHKD:SRAMESH	
APPR:GGLLEE	
REV	DESCRIPTION
D1	

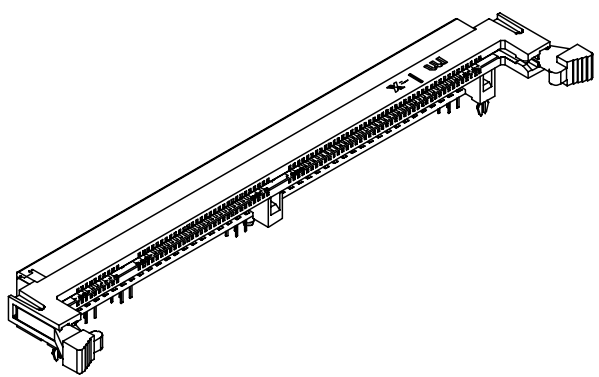
GENERAL TOLERANCES (UNLESS SPECIFIED)	
mm	INCH
4 PLACES ± ---	± ---
3 PLACES ± ---	± ---
2 PLACES ± 0.25	± ---
1 PLACE ± ---	± ---
ANGULAR ± 5 °	
DRAFT WHERE APPLICABLE MUST REMAIN WITHIN DIMENSIONS	

DIMENSION STYLE	
MM ONLY	
DRAWN BY	DATE
SQUEK	2000/01/21
CHECKED BY	DATE
KCLING	2000/03/01
APPROVED BY	DATE
SKTOH	2000/03/03
MATERIAL NO.	DOCUMENT NO.
SEE TABLE	SD-87609-001
SIZE	SHEET NO.
A3	2 OF 3

SCALE	DESIGN UNITS	THIRD ANGLE PROJECTION
NTS	METRIC	
SALES DRAWING DIMM, 1.27MM PITCH 168 CKTS, R/A		
MOLEX INCORPORATED		



ACTUAL MODULE HEIGHT AND CLEARANCE  
WHEN USING A 9.00MM THICK BY 25.40MM HEIGHT  
MODULE (TYPICAL SOJ PACKAGING).



PLATING OPTION	MATERIAL NO.	FUNCTION KEY	GOLD PLATING OPTION AT CONTACT AREA	DATUM VOLTAGE KEY	TAIL LENGTH P±0.25
TIN/LEAD	87609-0048	LEFT	15µIN/(0.38µM) MIN.	CENTER (3.3V)	2.79
	87609-0049	CENTRE			
	87609-0050	RIGHT			
	87609-0148	LEFT	30µIN/(0.76µM) MIN.		
	87609-0149	CENTRE			
	87609-0150	RIGHT			
	87609-0057	LEFT	15µIN/(0.38µM) MIN.	CENTER (3.3V)	3.18
	87609-0058	CENTRE			
	87609-0059	RIGHT			
	87609-0157	LEFT	30µIN/(0.76µM) MIN.		
	87609-0158	CENTRE			
	87609-0159	RIGHT			
TIN	87609-0066	LEFT	15µIN/(0.38µM) MIN.	CENTER (3.3V)	3.56
	87609-0067	CENTRE			
	87609-0068	RIGHT			
	87609-0166	LEFT	30µIN/(0.76µM) MIN.		
	87609-0167	CENTRE			
	87609-0168	RIGHT			
	87609-0051	LEFT	15µIN/(0.38µM) MIN.	CENTER (3.3V)	2.79
	87609-0052	CENTRE			
	87609-0053	RIGHT			
	87609-0151	LEFT	30µIN/(0.76µM) MIN.		
	87609-0152	CENTRE			
	87609-0153	RIGHT			
	87609-0060	LEFT	15µIN/(0.38µM) MIN.	CENTER (3.3V)	3.18
	87609-0061	CENTRE			
	87609-0062	RIGHT			
87609-0160	LEFT	30µIN/(0.76µM) MIN.			
87609-0161	CENTRE				
87609-0162	RIGHT				
87609-0069	LEFT	15µIN/(0.38µM) MIN.	CENTER (3.3V)	3.56	
87609-0070	CENTRE				
87609-0071	RIGHT				
87609-0169	LEFT	30µIN/(0.76µM) MIN.			
87609-0170	CENTRE				
87609-0171	RIGHT				

ADD FLAMMABILITY RATING EC NO: S2005-0928 DRWN:SHLENI CHKD:SRAMESH APPR:GGLEE	2005/06/16 2005/06/21 2005/06/24	QUALITY SYMBOLS ▽=0 ▽C=0	GENERAL TOLERANCES (UNLESS SPECIFIED)		DIMENSION STYLE MM ONLY		SCALE NTS	DESIGN UNITS METRIC	THIRD ANGLE PROJECTION			
			4 PLACES	± ---	± ---	DRAWN BY SQUEK	DATE 2000/01/21	SALES DRAWING DIMM, 1.27MM PITCH 168 CKTS, R/A				
			3 PLACES	± ---	± ---	CHECKED BY KCLING	DATE 2000/03/01					
			2 PLACES	± 0.25	± ---	APPROVED BY SKTOH	DATE 2000/03/03	MOLEX INCORPORATED				
1 PLACE	± ---	± ---	DRAFT WHERE APPLICABLE MUST REMAIN WITHIN DIMENSIONS		SEE TABLE		DOCUMENT NO. SD-87609-001	SHEET NO. 3 OF 3				