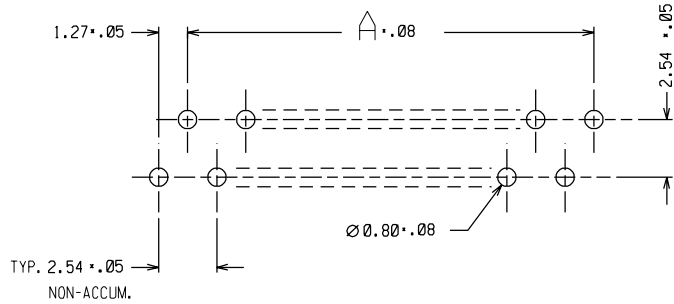
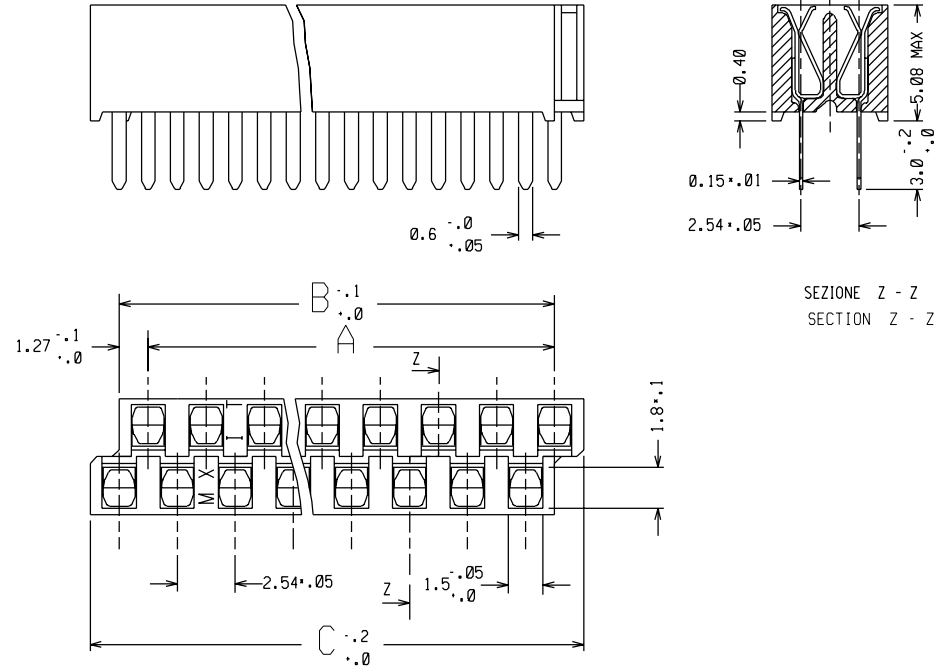


CONFIGURAZIONE DI FORATURA RACCOMANDATA SUL C.S.  
(VISTA LATO COMPONENTI)

RECOMMENDED PCB LAYOUT (VIEWED FROM COMPONENT SIDE)



Nº DI CODICE P/N	Nº VIE CCTS NO.	A	B	C	ATTREZZATO TOOLED
90510 - 0016	16	17.78	19.05	21.59	SI / YES
90510 - 0018	18	20.32	21.59	24.13	NO
90510 - 0020	20	22.86	24.13	26.67	SI / YES
90510 - 0022	22	25.40	26.67	29.21	NO
90510 - 0024	24	27.94	29.21	31.75	SI / YES
90510 - 0026	26	30.48	31.75	34.29	NO
90510 - 0028	28	33.02	34.29	36.83	SI / YES
90510 - 0040	40	48.26	49.53	52.07	SI / YES



NOTE / NOTES:

- MATERIALE: CORPO IN PBT NERO 30% F.V., UL 94 V-0  
CONTATTI: BRONZO FOSFOROSO  
MATERIAL: HOUSING - BLACK PBT 30% G.F., UL 94 V-0  
CONTACTS: PHOS. BR.
- FINITURA: PRESTAGNATO 4 µm MIN.  
PLATING: 4 µm (.00016 IN) MIN. PREPLATED TIN
- I CONNETTORI SONO MODULARI  
PARTS ARE SIDE TO SIDE AND END TO END STACKABLE

EC NO. Z2000-0171 DRW'G: S. BARBIERI 26-04-00 CHK: M. TESTAGUZZA 26-04-00 APPR: R. MARTUCCI 26-04-00	QUALITY SYMBOLS MAJOR M SIGNIF. S CRITICAL C	GENERAL TOLERANCES: (UNLESS SPECIFIED)		SCALE 5 : 1	DESIGN UNITS <input checked="" type="checkbox"/> mm <input type="checkbox"/> INCH	FIRST ANGLE PROJECTION	DIMENSIONS: <input type="checkbox"/> mm <input type="checkbox"/> INCH <input type="checkbox"/> mm <input checked="" type="checkbox"/> ONLY	SHT 1	REV A
		4 PLACES ±0.1	±	3 PLACES ±0.1	±		2 PLACES ±0.1	±	1 PLACE ±0.1
A	REV	ANGULAR: ±2°		DRAWN BY & DATE S. BARBIERI 26-04-00	TITLE: ZOCCOLO PER ZIP - PASSO 2.54 ZIG - ZAG IN LINE PACKAGE ASSEMBLY - 2.54 / (.100) CENTERS				SHEET NO. 1/2
		DRAFT WHERE APPLICABLE MUST REMAIN WITHIN DIMENSIONS		CHECKED BY & DATE M. TESTAGUZZA 26-04-00	MOLEX INCORPORATED				
				APPROVED BY & DATE R. MARTUCCI 26-04-00	CAD FILENAME		MATERIAL NO. SEE CHART	DRAWING NO. SD-90510-001	
THIS DRAWING CONTAINS INFORMATION THAT IS PROPRIETARY TO MOLEX INCORPORATED AND SHOULD NOT BE USED WITHOUT WRITTEN PERMISSION.									



# ZIP SOCKET

## "HIGH COAT" VERSION

Nº. DI CODICE P/N	Nº. VIE CCTS NO.	A	B	C
90510 · 0116	16	17.78	19.05	21.59
90510 · 0120	20	22.86	24.13	26.67
90510 · 0124	24	27.94	29.21	31.75
90510 · 0128	28	33.02	34.29	36.83
90510 · 0140	40	48.26	49.53	52.07

EC NO. Z2000-0171 DRWNS.: BARBIERI 26-04-00 CH'K: M. TESTAGUZZA 26-04-00 APPR.: R. MARTUCCI 26-04-00	QUALITY SYMBOLS MAJOR $\nabla$ M = SIGNIF. $\nabla$ S = CRITICAL $\nabla$ C =	DESCRIPTION REV A	GENERAL TOLERANCES: (UNLESS SPECIFIED)		SCALE 5 : 1	DESIGN UNITS <input checked="" type="checkbox"/> mm <input type="checkbox"/> INCH	FIRST ANGLE PROJECTION 	DIMENSIONS: <input type="checkbox"/> mm <input type="checkbox"/> INCH <input type="checkbox"/> mm <input checked="" type="checkbox"/> mm ONLY	SHT	REV
			4 PLACES ±0.1 ± 3 PLACES ±0.1 ± 2 PLACES ±0.1 ± 1 PLACE ±0.1 ± ANGULAR: ±2° °		DRAWN BY & DATE S. BARBIERI 26-04-00 CHECKED BY & DATE M. TESTAGUZZA 26-04-00 APPROVED BY & DATE R. MARTUCCI 26-04-00		TITLE: ZOCCOLO PER ZIP - PASSO 2.54 ZIG - ZAG IN LINE PACKAGE ASSEMBLY - 2.54 / (.100) CENTERS -		MOLEX INCORPORATED	
DRAFT WHERE APPLICABLE MUST REMAIN WITHIN DIMENSIONS			THIS DRAWING CONTAINS INFORMATION THAT IS PROPRIETARY TO MOLEX INCORPORATED AND SHOULD NOT BE USED WITHOUT WRITTEN PERMISSION.						SIZE A3	