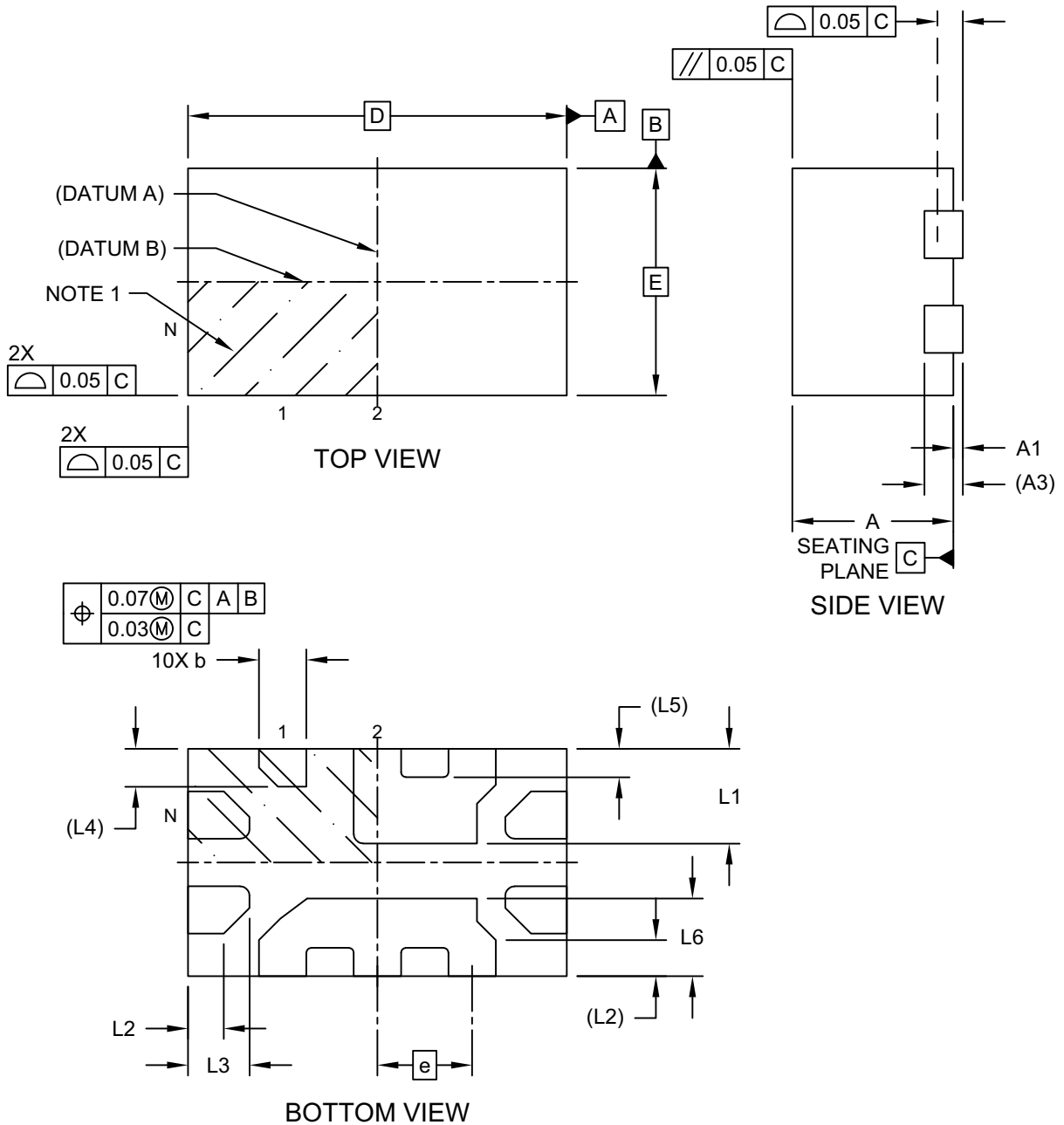


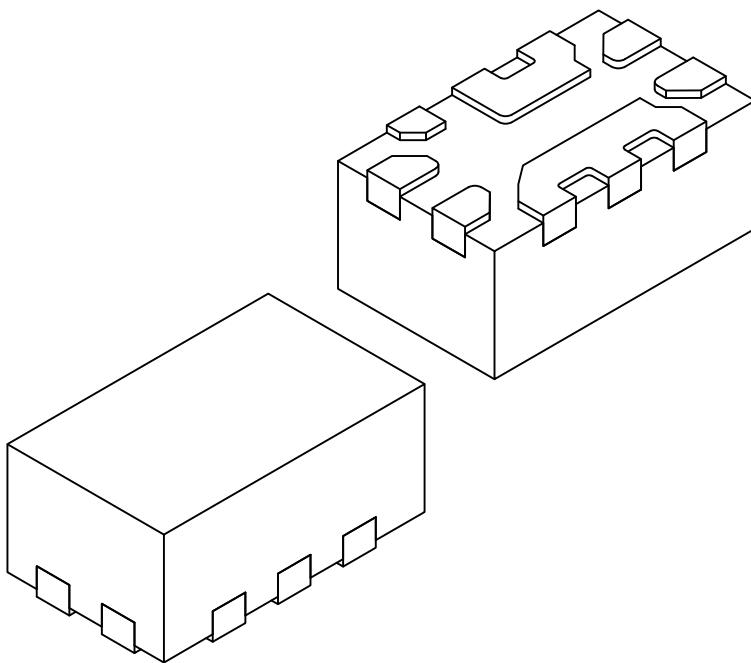
10-Lead Very Thin Plastic Quad Flat, No Lead Package (NDA) - 1.2x2.0x0.9 mm Body [VQFN]; Micrel Legacy Package FQFN1220-10LD-PL-1

Note: For the most current package drawings, please see the Microchip Packaging Specification located at <http://www.microchip.com/packaging>



10-Lead Very Thin Plastic Quad Flat, No Lead Package (NDA) - 1.2x2.0x0.9 mm Body [VQFN]; Micrel Legacy Package FQFN1220-10LD-PL-1

Note: For the most current package drawings, please see the Microchip Packaging Specification located at <http://www.microchip.com/packaging>



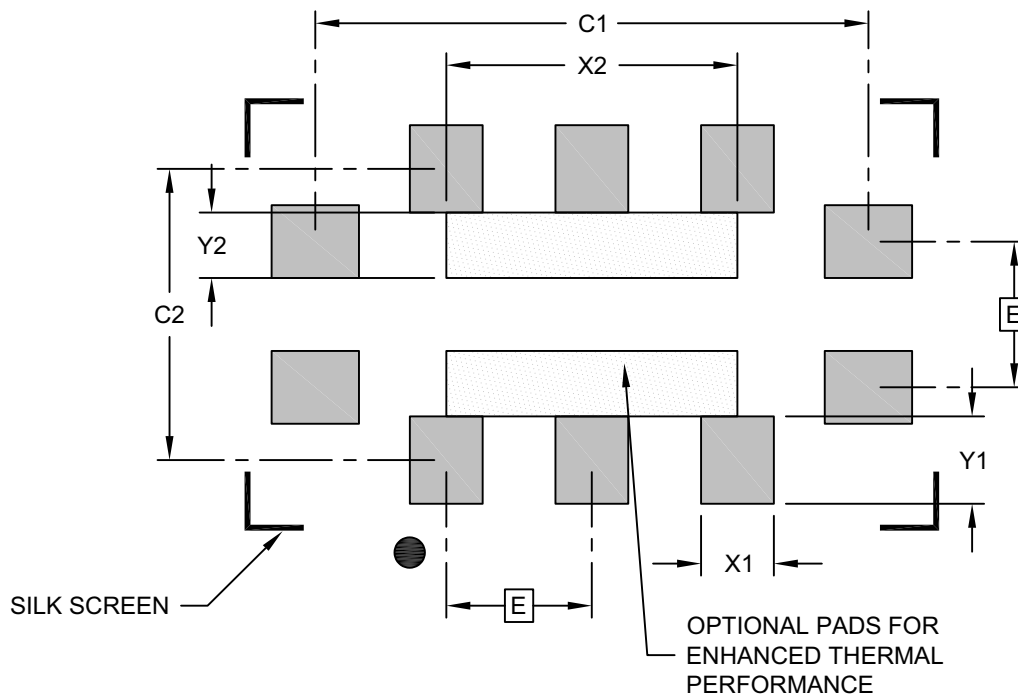
		MILLIMETERS		
Units				
Dimension Limits		MIN	NOM	MAX
Number of Terminals	N	10		
Pitch	e	0.50 BSC		
Overall Height	A	0.80	0.85	0.90
Standoff	A1	0.00	0.02	0.05
Terminal Thickness	A3	0.203 REF		
Overall Length	D	2.00 BSC		
Overall Width	E	1.20 BSC		
Terminal Width	b	0.20	0.25	0.30
Terminal Length	L1	0.45	0.50	0.55
Terminal Length	L2	0.19 REF		
Terminal Length	L3	0.275	0.325	0.375
Terminal Length	L4	0.20 REF		
Terminal Length	L5	0.15 REF		
Terminal Length	L6	0.36	0.41	0.46

Notes:

1. Pin 1 visual index feature may vary, but must be located within the hatched area.
2. Package is saw singulated
3. Dimensioning and tolerancing per ASME Y14.5M
 - BSC: Basic Dimension. Theoretically exact value shown without tolerances.
 - REF: Reference Dimension, usually without tolerance, for information purposes only.

10-Lead Very Thin Plastic Quad Flat, No Lead Package (NDA) - 1.2x2.0x0.9 mm Body [VQFN]; Micrel Legacy Package FQFN1220-10LD-PL-1

Note: For the most current package drawings, please see the Microchip Packaging Specification located at <http://www.microchip.com/packaging>



RECOMMENDED LAND PATTERN

Dimension Limits	Units	MILLIMETERS		
		MIN	NOM	MAX
Contact Pitch	E	0.50 BSC		
Optional Center Pad Width (X2)	X2			1.00
Optional Center Pad Length (X2)	Y2			0.225
Contact Pad Spacing	C1		1.90	
Contact Pad Spacing	C2		1.00	
Contact Pad Width (X10)	X1			0.25
Contact Pad Length (X10)	Y1			0.30
Contact Pad to Contact Pad (Xnn)	Y1	0.30		

Notes:

1. Dimensioning and tolerancing per ASME Y14.5M
BSC: Basic Dimension. Theoretically exact value shown without tolerances.