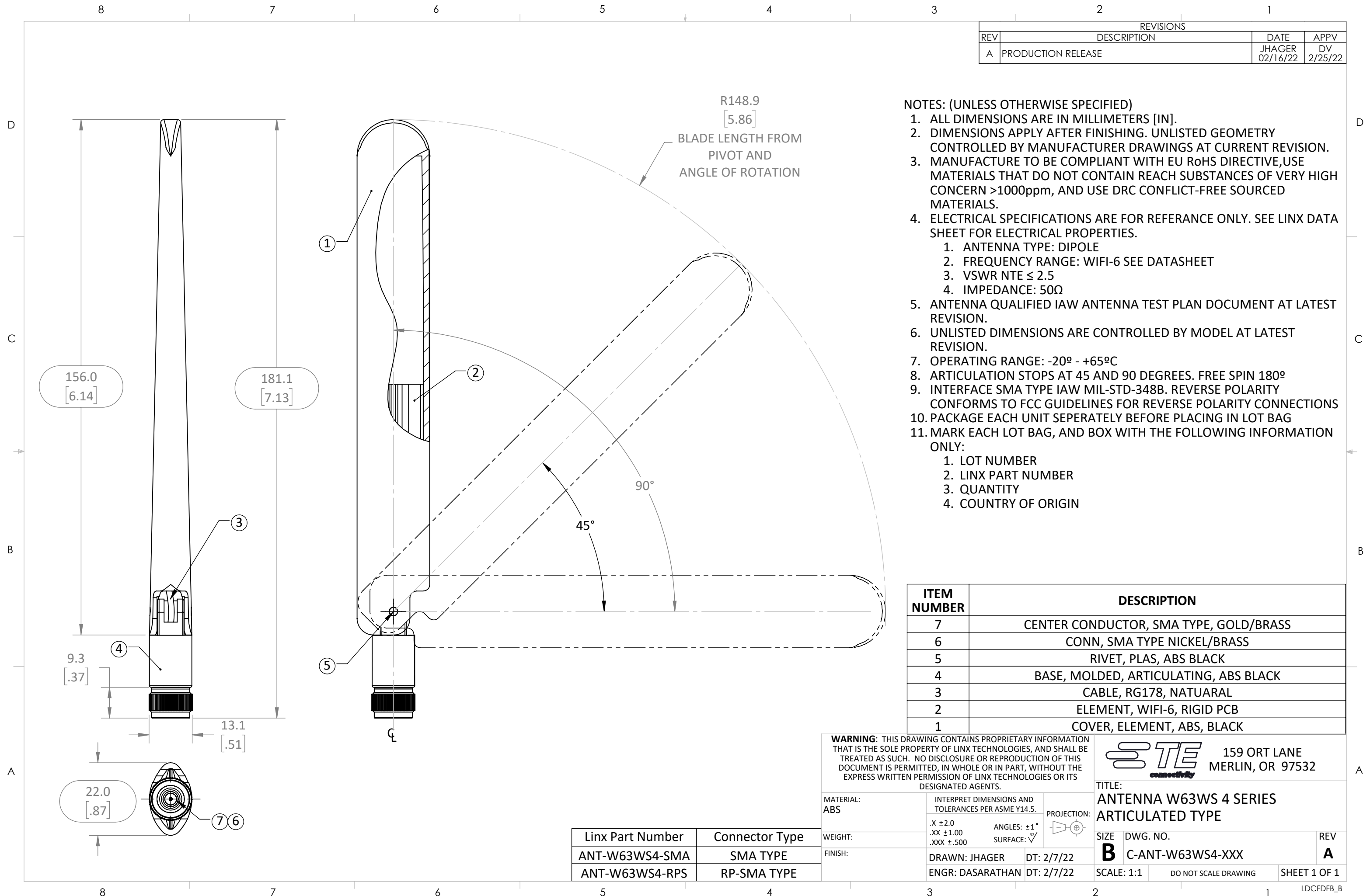


REVISIONS			
REV	DESCRIPTION	DATE	APPV
A	PRODUCTION RELEASE	JHAGER 02/16/22	DV 2/25/22



- NOTES: (UNLESS OTHERWISE SPECIFIED)
- ALL DIMENSIONS ARE IN MILLIMETERS [IN].
 - DIMENSIONS APPLY AFTER FINISHING. UNLISTED GEOMETRY CONTROLLED BY MANUFACTURER DRAWINGS AT CURRENT REVISION.
 - MANUFACTURE TO BE COMPLIANT WITH EU RoHS DIRECTIVE, USE MATERIALS THAT DO NOT CONTAIN REACH SUBSTANCES OF VERY HIGH CONCERN >1000ppm, AND USE DRC CONFLICT-FREE SOURCED MATERIALS.
 - ELECTRICAL SPECIFICATIONS ARE FOR REFERENCE ONLY. SEE LINX DATA SHEET FOR ELECTRICAL PROPERTIES.
 - ANTENNA TYPE: DIPOLE
 - FREQUENCY RANGE: WIFI-6 SEE DATASHEET
 - VSWR NTE ≤ 2.5
 - IMPEDANCE: 50Ω
 - ANTENNA QUALIFIED IAW ANTENNA TEST PLAN DOCUMENT AT LATEST REVISION.
 - UNLISTED DIMENSIONS ARE CONTROLLED BY MODEL AT LATEST REVISION.
 - OPERATING RANGE: -20° - +65°C
 - ARTICULATION STOPS AT 45 AND 90 DEGREES. FREE SPIN 180°
 - INTERFACE SMA TYPE IAW MIL-STD-348B. REVERSE POLARITY CONFORMS TO FCC GUIDELINES FOR REVERSE POLARITY CONNECTIONS
 - PACKAGE EACH UNIT SEPERATELY BEFORE PLACING IN LOT BAG
 - MARK EACH LOT BAG, AND BOX WITH THE FOLLOWING INFORMATION ONLY:
 - LOT NUMBER
 - LINX PART NUMBER
 - QUANTITY
 - COUNTRY OF ORIGIN

ITEM NUMBER	DESCRIPTION
7	CENTER CONDUCTOR, SMA TYPE, GOLD/BRASS
6	CONN, SMA TYPE NICKEL/BRASS
5	RIVET, PLAS, ABS BLACK
4	BASE, MOLDED, ARTICULATING, ABS BLACK
3	CABLE, RG178, NATUARAL
2	ELEMENT, WIFI-6, RIGID PCB
1	COVER, ELEMENT, ABS, BLACK

WARNING: THIS DRAWING CONTAINS PROPRIETARY INFORMATION THAT IS THE SOLE PROPERTY OF LINX TECHNOLOGIES, AND SHALL BE TREATED AS SUCH. NO DISCLOSURE OR REPRODUCTION OF THIS DOCUMENT IS PERMITTED, IN WHOLE OR IN PART, WITHOUT THE EXPRESS WRITTEN PERMISSION OF LINX TECHNOLOGIES OR ITS DESIGNATED AGENTS.

STE connectivity 159 ORT LANE
MERLIN, OR 97532

MATERIAL: ABS	INTERPRET DIMENSIONS AND TOLERANCES PER ASME Y14.5.	PROJECTION:
WEIGHT:	.X ±2.0 .XX ±1.00 .XXX ±.500	
FINISH:	DRAWN: JHAGER DT: 2/7/22	ENGR: DASARATHAN DT: 2/7/22

TITLE: ANTENNA W63WS 4 SERIES ARTICULATED TYPE		
SIZE B	DWG. NO. C-ANT-W63WS4-XXX	REV A
SCALE: 1:1	DO NOT SCALE DRAWING	SHEET 1 OF 1

Linx Part Number	Connector Type
ANT-W63WS4-SMA	SMA TYPE
ANT-W63WS4-RPS	RP-SMA TYPE