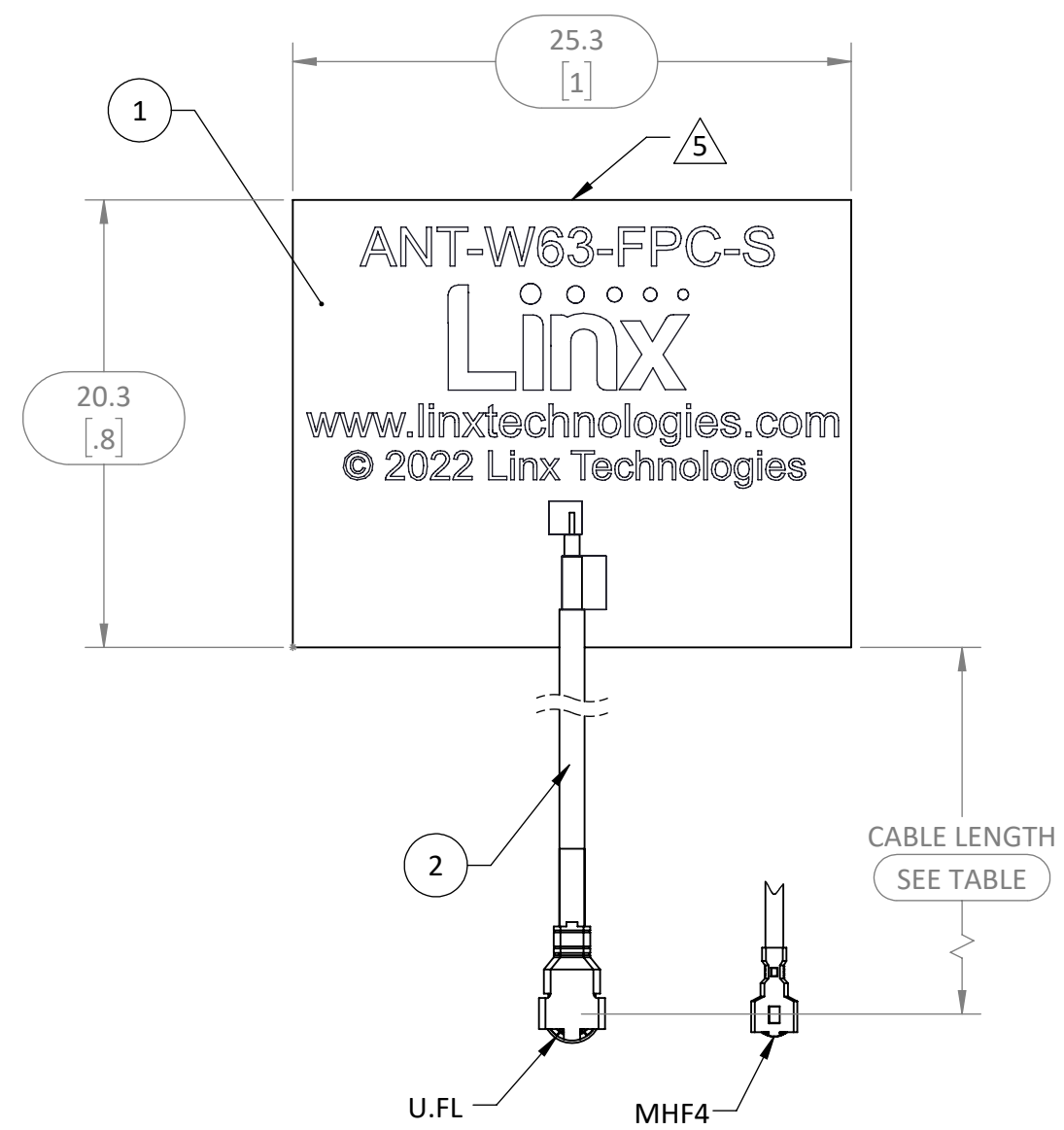


REVISIONS			
REV	DESCRIPTION	DATE	APPV
A	PRODUCTION RELEASE	JHAGER 5/24/22	DV 6/1/22
B	UPDATED DRAWINGS TO REFLECT THICKNESS AND LABELING REQUIREMENTS	JHAGER 6/28/22	



- NOTES: (UNLESS OTHERWISE SPECIFIED)
- ALL DIMENSIONS ARE IN MILLIMETERS [IN].
 - DIMENSIONS APPLY AFTER FINISHING.
 - MANUFACTURE TO BE COMPLIANT WITH EU RoHS DIRECTIVE, USE MATERIALS THAT DO NOT CONTAIN REACH SUBSTANCES OF VERY HIGH CONCERN >1000ppm, AND USE DRC CONFLICT-FREE SOURCED MATERIALS.
 - MECHANICAL:
 - OPERATING TEMPERATURE: -30°C - +85°C
 - STORAGE TEMPERATURE: ~RH 50% @ 21°C TO ACHIEVE FULL PROPERTIES.
 - BEND RADIUS: 2mm [.078"] MAX.
 - THICKNESS NTE .3mm
 - ADHESIVE BACKING SPLIT AT CENTER LINE FOR EASY REMOVAL.
 - ELECTRICAL PROPERTIES SHOWN FOR INFORMATION ONLY. SEE LINX DATA SHEET FOR COMPLETE ELECTRICAL SPECIFICATIONS.
 - IMPEDANCE: 50Ω
 - VSWR: 2.4 MAX
 - FREQUENCY: 2400MHz - 7125MHz
 - MAX POWER: 5W
 - TYPE: DIPOLE, LINEAR, OMNI-DIRECTIONAL.
 - ANTENNA QUALIFIED IAW LINX INTRNAL TEST PLAN AT LATEST REVISION.
 - PACKAGE ANTENNA INDIVIDUALLY AND LABEL BOX, LOT BAG IAW LINX SUPPLIED DRAWING.
 - CONSTRUCTION: STRIP CABLE ASSEMBLY AND PERMINANTLY ATTACH TO ANTENNA AS SHOWN USING SOLDER IAW IPC J-STD-001 METHOD. TO ACHIEVE CONNECTOR ORIENTATION.
 - ANTENNA ASSEMBLY APPLICATION OF [FN3] ADHESIVE TO SURFACE:
 - CLEAN SURFACES AND ENSURE NO LARGE SURFACE GAPS ARE PRESENT.
 - REMOVE BACKING AND APPLY MP 467 ADHESIVE USING EVEN PRESSURE.
 - APPLY TO SURFACE BETWEEN 21°C AND 38°C [70°F AND 100°F]

ITEM NUMBER	CABLE LENGTH (mm) ± 2.0mm	CABLE PART NUMBER	CABLE MIN. BEND RADIUS
ANT-W63-FPC-SH50UF	50	CSI-UFFR-56.2-STCT	4.5
ANT-W63-FPC-SH100UF	100	CSI-UFFR-106.2-STCT	4.5
ANT-W63-FPC-SH150UF	150	CSI-UFFR-156.2-STCT	4.5
ANT-W63-FPC-SH200UF	200	CSI-UFFR-206.2-STCT	4.5
ANT-W63-FPC-SH50M4	50	CSI-MHF4-56.2-STCT	4.5
ANT-W63-FPC-SH100M4	100	CSI-MHF4-106.2-STCT	4.5
ANT-W63-FPC-SH150M4	150	CSI-MHF4-156.2-STCT	4.5
ANT-W63-FPC-SH200M4	200	CSI-MHF4-206.2-STCT	4.5

BILL OF MATERIALS				
ITEM	QTY.	U/M	PART NUMBER	DESCRIPTION
1	1	EA	PCB-ANT-W63-FPC-S	ANTENNA, W63 FPC-SH ADH BACK
2	1	EA	SEE TABLE	CABLE, COAX, 1.13mm, BLACK

WARNING: THIS DRAWING CONTAINS PROPRIETARY INFORMATION THAT IS THE SOLE PROPERTY OF LINX TECHNOLOGIES, AND SHALL BE TREATED AS SUCH. NO DISCLOSURE OR REPRODUCTION OF THIS DOCUMENT IS PERMITTED, IN WHOLE OR IN PART, WITHOUT THE EXPRESS WRITTEN PERMISSION OF LINX TECHNOLOGIES OR ITS DESIGNATED AGENTS.

MATERIAL: KAPTON MP467
 INTERPRET DIMENSIONS AND TOLERANCES PER ASME Y14.5.
 .X ±2.0 ANGLES: ±1°
 .XX ±1.00 SURFACE: √
 .XXX ±.500

PROJECTION:

FINISH: GOLD
 DRAWN: JHAGER DT: 5/24/22
 ENGR: DASARATHAN DT:

STE connectivity 159 ORT LANE MERLIN, OR 97532
 TITLE: ANTENNA W63 FLEXIBLE PCB ADHESIVE BACKED
 SIZE DWG. NO. REV
B C-ANT-W63-FPC-SHXXXXX **B**
 SCALE: 3:1 DO NOT SCALE DRAWING SHEET 1 OF 1

8 7 6 5 4 3 2 1

8 7 6 5 4 3 2 1 LDCDFB_B