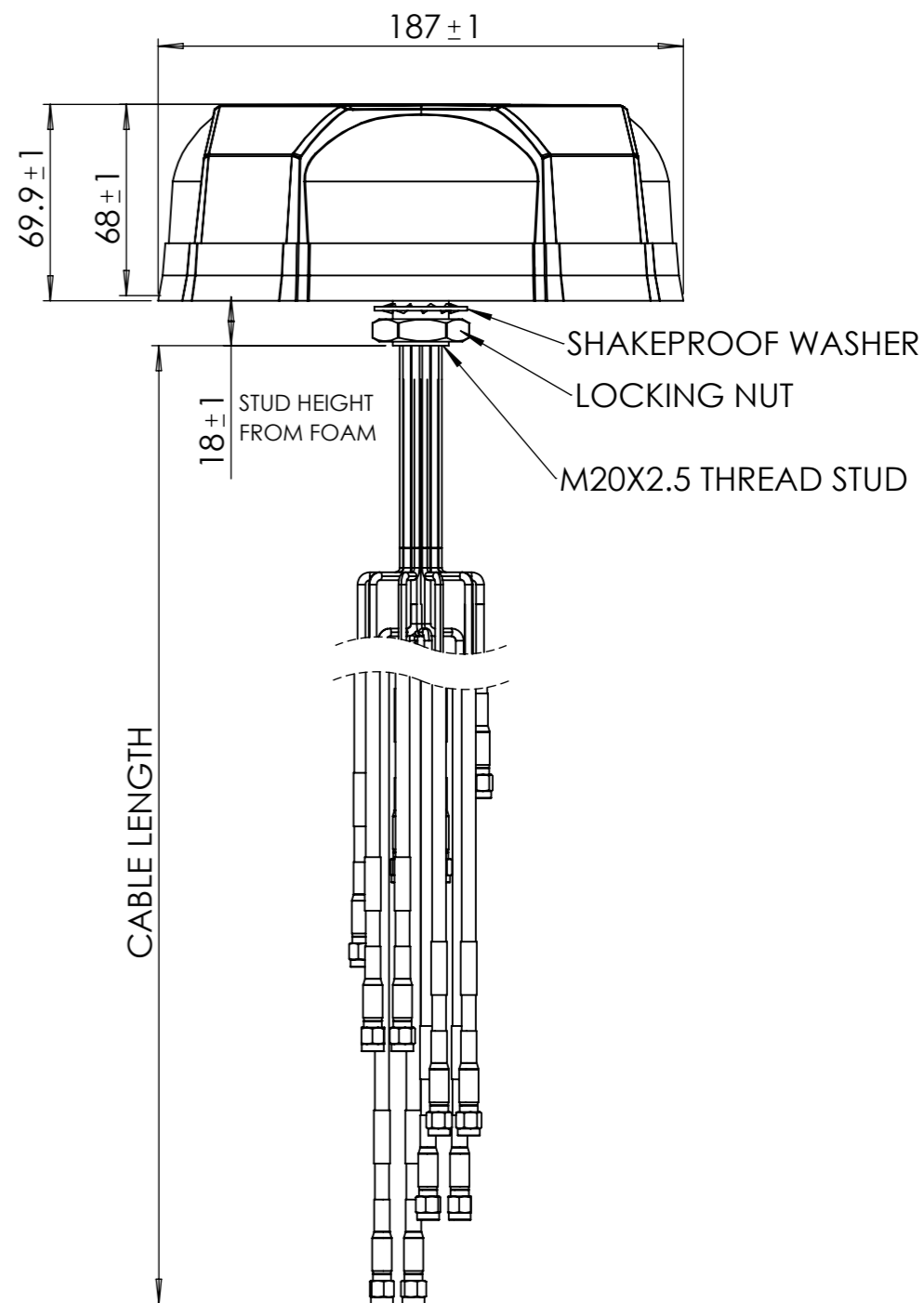


REVISIONS

REV	DESCRIPTION	DATE	DWN	APVD
A	ECO-23-00100; PRODUCTION RELEASE	02MAY2023	LCT	LLT

PARAMETER	SPECIFICATION														
Antenna Model	L000434-01 / L000434-02 / L000434-03														
Alias Part No	VNK6172B-530A / VNK6172B-530H / VNK6172W-530A														
Number of Ports	9 (4x- 3G/LTE/4G/5G Cellular, 4x- Wi-Fi 6E, 1x- L1+L5 GNSS)														
Port Configuration (Label)	4x- 3G/LTE/4G/ISM/CBRS (Cellular)						4x - Wi-Fi 6E								
Frequency Bands, MHz	617-698	698-960	1427-1511	1690-2700	3300-4200	4400-6000	6000-7125	2400-2500	4900-6000	6000-7125					
Peak Gain, dBi*	2	6	7	9	9	7.5	8	8	7.5						
Total Efficiency (Average), %*	46		67	68	67	61	49	57	55	51					
VSWR (Max)**	< 1.9:1	< 1.9:1	< 1.5:1	< 1.4:1	< 1.4:1	< 1.7:1	< 2:1	< 1.5:1	< 1.4:1	< 1.4:1					
Isolation- Cellular-to-Cellular/BT Element	11	11	21	20	29	34	39	N/A							
Isolation- Wi-Fi-to-Wi-Fi Elements, dB**	N/A											22	27	32	
Max Gain ±30° above Horizon @ 5 GHz U-NII Bands, dBi*	5150-5250 MHz			7						5250-5350 MHz			7		
	5470-5725 MHz			7.5						5725-5850 MHz			7		
Max Power @ Ambient 20°C, Watts	10											1			
Connector Type	L000434-01 @ SMA-Male L000434-02 @ FAKRA-D L000434-03 @ SMA-Male						L000434-01 @ RP SMA-Male L000434-02 @ FAKRA-I L000434-03 @ RP SMA-Male								
Polarization	Linear														
Nominal Impedance, Ω	50														
Weight, g (lbs)	2380 (5.25)														
Cables	1ft. RG174LL- pigtails/Staggered; 16ft. RG58LL- extension cables														
Mounting Type	Fixed Stud M20														
Antenna Dimension Ht x Dia, mm (inches)	68 x 187 (2.7 x 7.4)														
Radome Color	Black/White														
Radome Material	PC, UL94-V0														
Baseplate Material	Aluminium														
Ingression Protection	IP67														
UV Rated	ASTM D4674														
Operating Temperature, °C (°F)	-40 to +85 (-40 to 185)														
Storage Temperature, °C (°F)	-40 to +85 (-40 to 185)														
Humidity Rating	MIL-STD-810G, 507.5, Procedure II, Aggravated Humidity @ 95%														
Flammability Rating	UL94 V0														
Mechanical Shock Rating	IEC 60068-2-27, Secured Cross Country Vehicles														
Vibration Test Rating	MIL-STD-810G, Method 514.6, Category 4, Highway Truck Vibration														
Material Substance Compliance	RoHS														
Wind Velocity (MPH)- Operational	100														
Wind Velocity (MPH)- Survival	136														

GNSS ANTENNA SPECIFICATIONS		
Frequency, MHz		1164-1189; 1559-1610
Passive Antenna	1176.45 MHz	-0.4 Typ.
Peak Gain, dBi	1561 MHz	-0.6 Typ.
	1575.42 MHz	0.9 Typ.
	1602 MHz	-0.5 Typ.
LNA Gain, dBi		28 ± 3 Typ.
Noise Figure, dB		3.0 Typ.
Max VSWR		2.0:1
Polarization		RHCP
Nominal Impedance, Ω		50
DC Voltage, Vdc		2~5
Current @ DC 3V, mA		12.5 Typ.
Input Max Power @ DC 3V, dBm		+10
Out-of-band	350-520 MHz	> 65
Rejection, dBc	698-960 MHz	> 70
	1428-1511 MHz	> 40
	1710-2700 MHz	> 65
	4900-5800 MHz	> 75
Cable Type		RG174, Light Gray
Connector		L000434-01 @ SMA-Male L000434-02 @ FAKRA-C L000434-03 @ SMA-Male



Antenna is measured on a 2ft x 2ft ground plane.

*Measured with 1ft RG174LL coax cable.

**Measured with 1ft RG174LL pigtail +16ft RG58LL extension cable.

CABLE LOSS												
RG58LL, OD 4.95±0.20mm (ECE R118 Compliant) (P/N: L000326-01)												
Frequency, MHz	698	960	1511	2500	2700	3300	4200	4400	4900	6000	7125	
Cable Attenuation, dB/m	0.3	0.4	0.5	0.7	0.7	0.8	0.9	1	1.1	1.2	1.3	

TCPN	No of PORT	RADOME COLOUR	ANTENNA WEIGHT, g (lbs)	PORTS CONFIGURATION			
				4G/5G	WLAN	BT	GNSS
L000434-01	9	BLACK	2380 (5.25)	4	4	NA	1
L000434-02	9	BLACK	2380 (5.25)	4	4	NA	1
L000434-03	9	WHITE	2380 (5.25)	4	4	NA	1
L000434-04	8	BLACK	2100(4.63)	4	2	1	1
L000434-05	8	BLACK	2100(4.63)	4	2	1	1
L000434-06	8	WHITE	2100(4.63)	4	2	1	1
L000434-07	4	BLACK	1250(2.76)	4	NA	NA	NA
L000434-08	14	BLACK	3410(7.52)	4	8	1	1

THIS DRAWING IS A CONTROLLED DOCUMENT.		DWN	20DEC2022					
		LCTAN						
		CHK			NAME			
		APVD			MULTI PORT VEHICLE ANT,5G,			
		PRODUCT SPEC			Wi-Fi,BT,GNSS			
		APPLICATION SPEC						
		WEIGHT	649.38	g	SIZE	CAGE CODE	DRAWING NO	RESTRICTED TO
		MATERIAL	SEE BOM		A3	00779	L000434	-
		FINISH			SCALE		SHEET	REV
					1:2		1 OF 5	A
CUSTOMER DRAWING								

PARAMETER	SPECIFICATION												
Antenna Model	L000434-04 / L000434-05 / L000434-06												
Alias Part No	VEK61726B-530AG/VEK61726B-530AN/VEK61726W-530AG												
Number of Ports	8 (4x- 3G/LTE/4G/5G Cellular, 2x- Wi-Fi 6E, 1x- Bluetooth, 1x- L1+L5 GNSS)												
Port Configuration (Label)	4x- 3G/LTE/4G/5G Cellular (Cellular)						8x - Wi-Fi 6E			1x- Bluetooth (BT)			
Frequency Bands, MHz	617-698	698-960	1427-1511	1690-2700	3300-4200	4400-6000	6000-7125	2400-2500	4900-6000	6000-7125	2400-2500		
Peak Gain, dBi*	2	6	7	9	9	7.5	8	8	7.5	8			
Total Efficiency (Average), %*	46			67	68	67	61	49	57	55	51	57	
VSWR (Max)**	< 1.9:1	< 1.9:1	< 1.5:1	< 1.4:1	< 1.4:1	< 1.7:1	< 2:1	< 1.5:1	< 1.4:1	< 1.4:1	< 1.5:1		
Isolation- Cellular-to-Cellular/BT Element	11	11	21	20	29	34	39	N/A			22		
Isolation- Wi-Fi-to-Wi-Fi Elements, dB**	N/A						22	27	32	N/A			
Max Gain ±30° above Horizon @ 5 GHz U-NII Bands, dBi*	5150-5250 MHz			7			8			N/A			
	5250-5350 MHz			7			7			N/A			
	5470-5725 MHz			7.5			7			N/A			
	5725-5850 MHz			7			7			N/A			
Max Power @ Ambient 20°C, Watts	10						1						
Connector Type	L000434-04 @ SMA-Male L000434-05 @ FAKRA-D L000434-06 @ SMA-Male			L000434-04 @ RP SMA-Male L000434-05 @ FAKRA-I L000434-06 @ RP SMA-Male			L000434-04 @ SMA-Male L000434-05 @ FAKRA-Z L000434-06 @ SMA-Male						
Polarization	Linear												
Nominal Impedance, Ω	50												
Weight, g (lbs)	2100 (4.63)												
Cables	1ft. RG174LL- pigtailed/Staggered; 16ft. RG58LL- extension cables												
Mounting Type	Fixed Stud M20												
Antenna Dimension Ht x Dia, mm (inches)	68 x 187 (2.7 x 7.4)												
Radome Color	Black/White												
Radome Material	PC, UL94-V0												
Baseplate Material	Aluminium												
Ingression Protection	IP67												
UV Rated	ASTM D4674												
Operating Temperature, °C (°F)	-40 to +85 (-40 to 185)												
Storage Temperature, °C (°F)	-40 to +85 (-40 to 185)												
Humidity Rating	MIL-STD-810G, 507.5, Procedure II, Aggravated Humidity @ 95%												
Flammability Rating	UL94 V0												
Mechanical Shock Rating	IEC 60068-2-27, Secured Cross Country Vehicles												
Vibration Test Rating	MIL-STD-810G, Method 514.6, Category 4, Highway Truck Vibration												
Material Substance Compliance	RoHS												
Wind Velocity (MPH)- Operational	100												
Wind Velocity (MPH)- Survival	136												

Antenna is measured on a 2ft x 2ft ground plane.

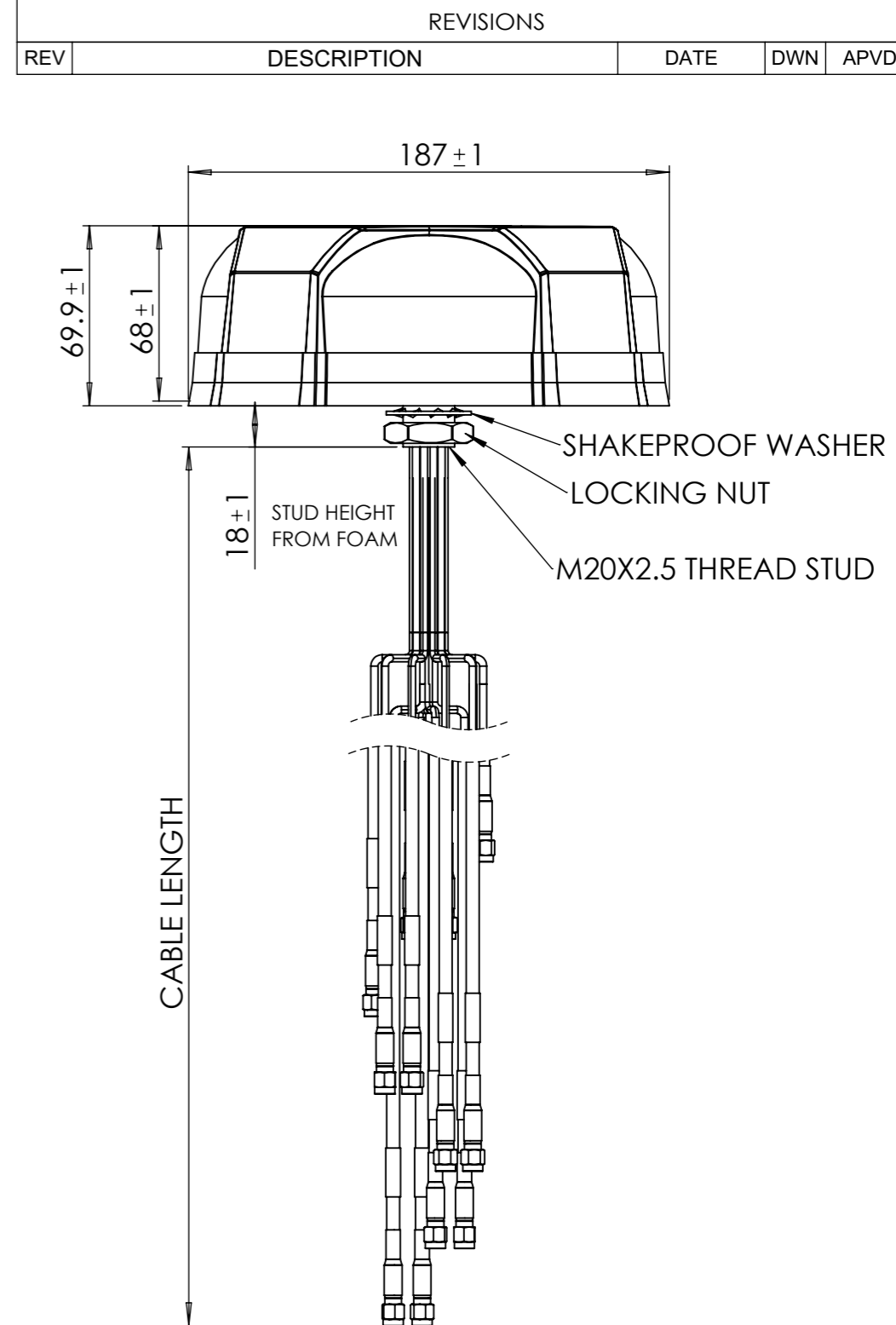
*Measured with 1ft RG174LL coax cable.

**Measured with 1ft RG174LL pigtail +16ft RG58LL extension cable.

CABLE LOSS												
RG58LL, OD 4.95±0.20mm (ECE R118 Compliant) (P/N: L000326-01)												
Frequency, MHz	698	960	1511	2500	2700	3300	4200	4400	4900	6000	7125	
Cable Attenuation, dB/m	0.3	0.4	0.5	0.7	0.7	0.8	0.9	1	1.1	1.2	1.3	

TCPN	No of PORT	RADOME COLOUR	ANTENNA WEIGHT, g (lbs)	PORTS CONFIGURATION			
				4G/5G	WLAN	BT	GNSS
L000434-01	9	BLACK	2380 (5.25)	4	4	NA	1
L000434-02	9	BLACK	2380 (5.25)	4	4	NA	1
L000434-03	9	WHITE	2380 (5.25)	4	4	NA	1
L000434-04	8	BLACK	2100(4.63)	4	2	1	1
L000434-05	8	BLACK	2100(4.63)	4	2	1	1
L000434-06	8	WHITE	2100(4.63)	4	2	1	1
L000434-07	4	BLACK	1250(2.76)	4	NA	NA	NA
L000434-08	14	BLACK	3410(7.52)	4	8	1	1

GNSS ANTENNA SPECIFICATIONS		
Frequency, MHz	1164-1189; 1559-1610	
Passive Antenna	1176.45 MHz	-0.4 Typ.
Peak Gain, dBi	1561 MHz	-0.6 Typ.
	1575.42 MHz	0.9 Typ.
	1602 MHz	-0.5 Typ.
LNA Gain, dBi	28 ± 3 Typ.	
Noise Figure, dB	3.0 Typ.	
Max VSWR	2.0:1	
Polarization	RHCP	
Nominal Impedance, Ω	50	
DC Voltage, Vdc	2~5	
Current @ DC 3V, mA	12.5 Typ.	
Input Max Power @ DC 3V, dBm	+10	
Out-of-band	350-520 MHz	> 65
Rejection, dBc	698-960 MHz	> 70
	1428-1511 MHz	> 40
	1710-2700 MHz	> 65
	4900-5800 MHz	> 75
Cable Type	RG174, Light Gray	
Connector	L000434-04 @ SMA-Male L000434-05 @ FAKRA-C L000434-06 @ SMA-Male	



THIS DRAWING IS A CONTROLLED DOCUMENT.		DWN	20DEC2022			TE Connectivity								
DIMENSIONS: mm		LCTAN				MULTI PORT VEHICLE ANT, 5G, Wi-Fi, BT, GNSS								
TOLERANCES UNLESS OTHERWISE SPECIFIED:		CHK												
0 PLC ± 0.5 1 PLC ± 0.25 2 PLC ± 0.13 3 PLC ± 4 PLC ± ANGLES ± 30°		APVD												
MATERIAL SEE BOM		FINISH			PRODUCT SPEC									
					APPLICATION SPEC									
					WEIGHT	649.38 g	SIZE	A3	CAGE CODE	00779	DRAWING NO	L000434	RESTRICTED TO	-
					CUSTOMER DRAWING			SCALE	1:2	SHEET	2 OF 5	REV	A	

PARAMETER		SPECIFICATION						
Antenna Model	L000434-07							
Alias Part No	VMQ6172B-530K							
Number of Ports	4 (4x- 3G/LTE/4G/5G Cellular)							
Port Configuration (Label)	4x- 3G/LTE/4G/ISM/CBRS (Cellular)							
Frequency Bands, MHz	617-698	698-960	1427-1511	1690-2700	3300-4200	4400-6000	6000-7125	
Peak Gain, dBi*	2	6	7	9	9	9	7.5	
Total Efficiency (Average), %*	46		67	68	67	61	49	
VSWR (Max)**	< 1.9:1	< 1.9:1	< 1.5:1	< 1.4:1	< 1.4:1	< 1.7:1	< 2:1	
Isolation- Cellular-to-Cellular/BT Element	11	11	21	20	29	34	39	
Isolation- Wi-Fi-to-Wi-Fi Elements, dB**	N/A							
Max Gain ±30° above Horizon @ 5 GHz U-NII Bands, dBi*	5150-5250 MHz		7					
	5250-5350 MHz		7					
	5470-5725 MHz		7.5					
	5725-5850 MHz		7					
Max Power @ Ambient 20°C, Watts	10							
Connector Type	SMA-Male							
Polarization	Linear							
Nominal Impedance, Ω	50							
Weight, g (lbs)	1250 (2.76)							
Cables	1ft. RG174LL- pigtails/Staggered; 16ft. RG58LL- extension cables							
Mounting Type	Fixed Stud M20							
Antenna Dimension Ht x Dia, mm (inches)	68 x 187 (2.7 x 7.4)							
Radome Color	Black							
Radome Material	PC, UL94-V0							
Baseplate Material	Aluminium							
Ingression Protection	IP67							
UV Rated	ASTM D4674							
Operating Temperature, °C (°F)	-40 to +85 (-40 to 185)							
Storage Temperature, °C (°F)	-40 to +85 (-40 to 185)							
Humidity Rating	MIL-STD-810G, 507.5, Procedure II, Aggravated Humidity @ 95%							
Flammability Rating	UL94 V0							
Mechanical Shock Rating	IEC 60068-2-27, Secured Cross Country Vehicles							
Vibration Test Rating	MIL-STD-810G, Method 514.6, Category 4, Highway Truck Vibration							
Material Substance Compliance	RoHS							
Wind Velocity (MPH)- Operational	100							
Wind Velocity (MPH)- Survival	136							

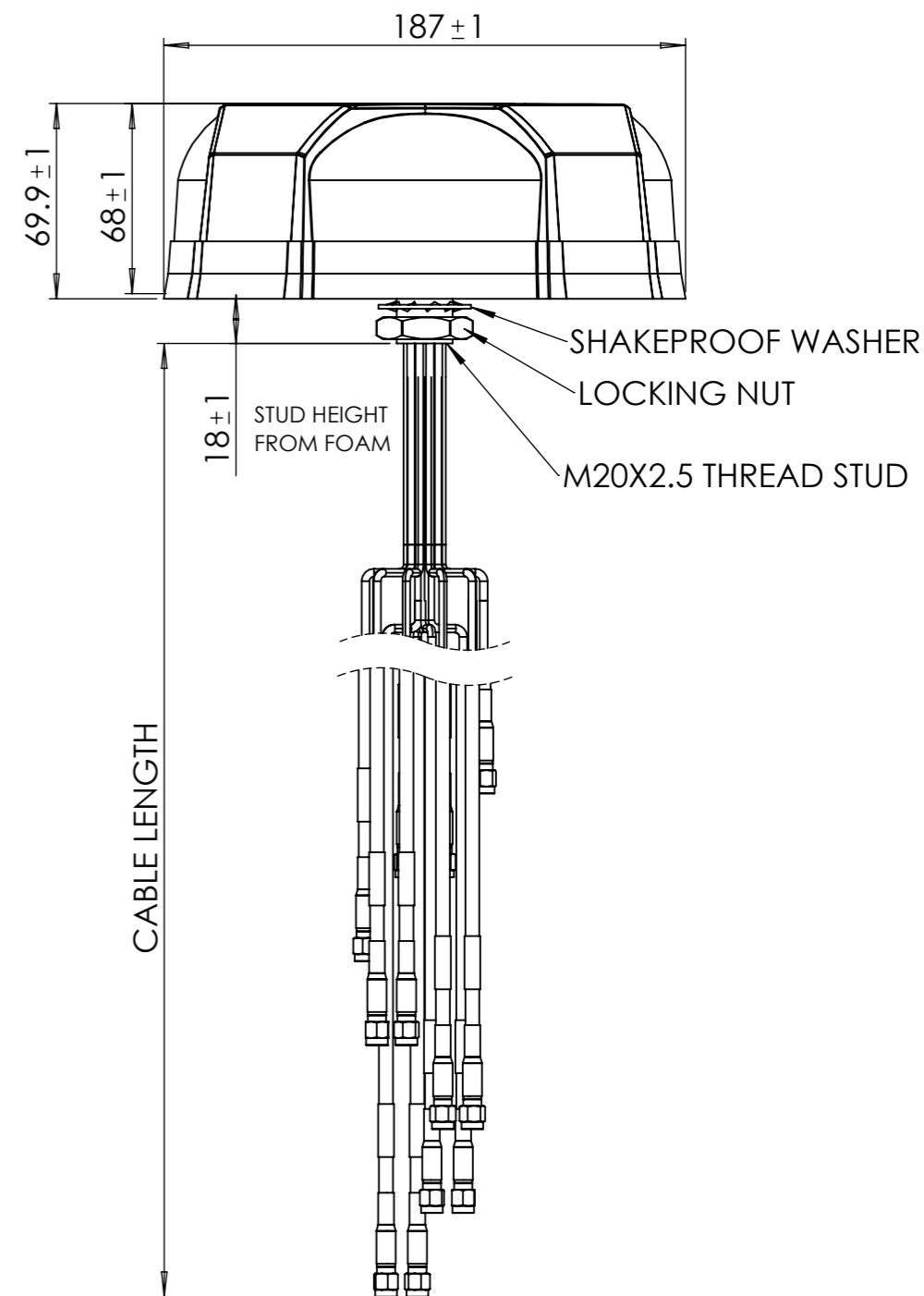
Antenna is measured on a 2ft x 2ft ground plane.

*Measured with 1ft RG174LL coax cable.

**Measured with 1ft RG174LL pigtail + 16ft RG58LL extension cable.

CABLE LOSS											
RG58LL, OD 4.95±0.20mm (ECE R118 Compliant) (P/N: L000326-01)											
Frequency, MHz	698	960	1511	2500	2700	3300	4200	4400	4900	6000	7125
Cable Attenuation, dB/m	0.3	0.4	0.5	0.7	0.7	0.8	0.9	1	1.1	1.2	1.3

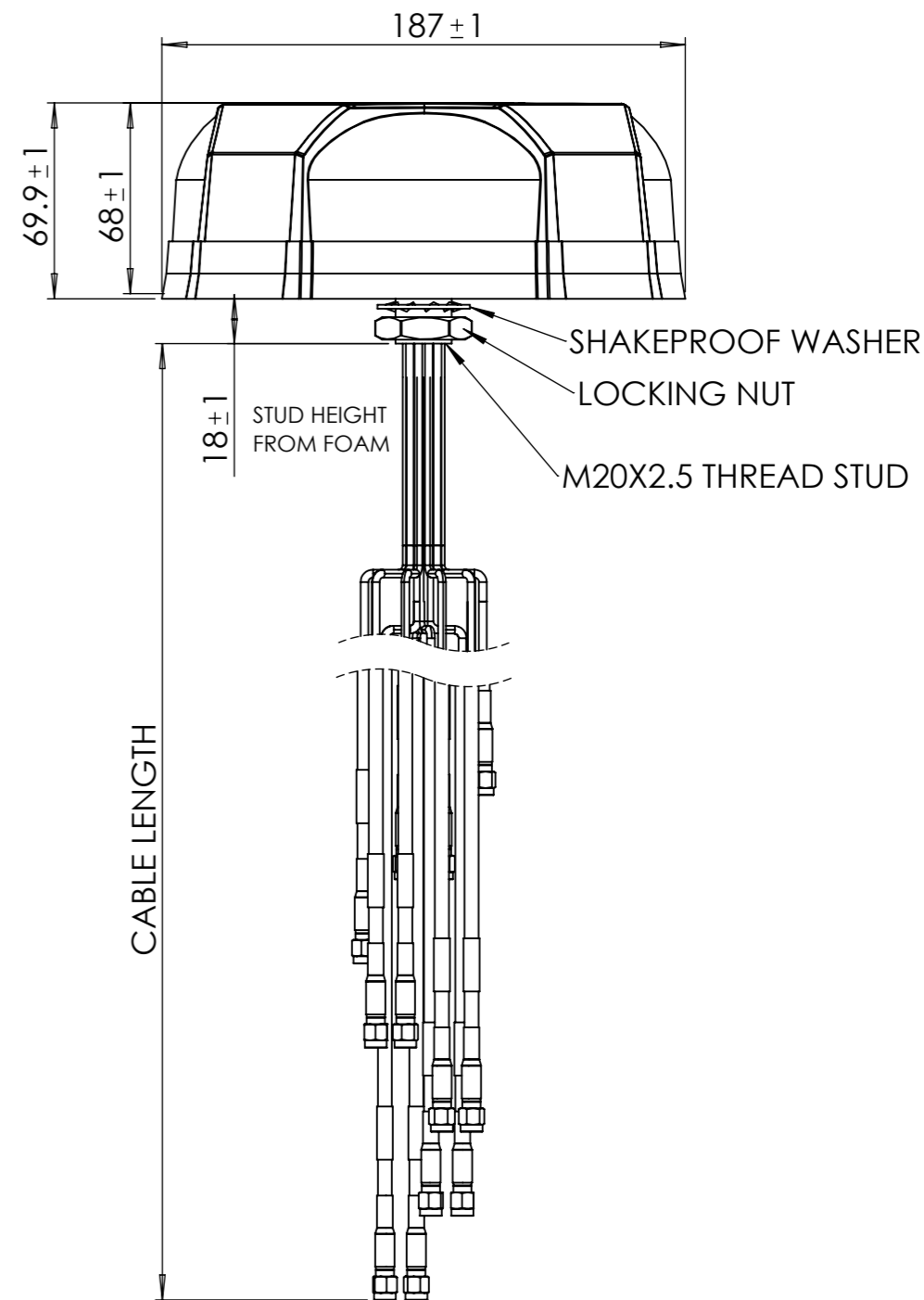
TCPN	No of PORT	RADOME COLOUR	ANTENNA WEIGHT, g (lbs)	PORTS CONFIGURATION			
				4G/5G	WLAN	BT	GNSS
L000434-01	9	BLACK	2380 (5.25)	4	4	NA	1
L000434-02	9	BLACK	2380 (5.25)	4	4	NA	1
L000434-03	9	WHITE	2380 (5.25)	4	4	NA	1
L000434-04	8	BLACK	2100(4.63)	4	2	1	1
L000434-05	8	BLACK	2100(4.63)	4	2	1	1
L000434-06	8	WHITE	2100(4.63)	4	2	1	1
L000434-07	4	BLACK	1250(2.76)	4	NA	NA	NA
L000434-08	14	BLACK	3410(7.52)	4	8	1	1



THIS DRAWING IS A CONTROLLED DOCUMENT.		DWN 20DEC2022			
DIMENSIONS: mm		TOLERANCES UNLESS OTHERWISE SPECIFIED:			
		0 PLC ± 0.5		NAME MULTI PORT VEHICLE ANT, 5G, Wi-Fi, BT, GNSS	
		1 PLC ± 0.25		SIZE A3	
MATERIAL SEE BOM		2 PLC ± 0.13		CAGE CODE 00779	
		3 PLC ±		DRAWING NO L000434	
FINISH		4 PLC ±		RESTRICTED TO -	
		ANGLES ± 30'		SCALE 1:2	
WEIGHT 649.38 g		CUSTOMER DRAWING		SHEET 3 OF 5	
REV A		REV A		REV A	

PARAMETER	SPECIFICATION											
Antenna Model	L000434-08											
Alias Part No	VXK6172B-530AG											
Number of Ports	14 (4x- 3G/LTE/4G/5G Cellular, 8x- Wi-Fi 6E, 1x- Bluetooth, 1x- L1+L5 GNSS)											
Port Configuration (Label)	4x- 3G/LTE/4G/ISM/CBRS (Cellular)				8x - Wi-Fi 6E				1x- Bluetooth (BT)			
Frequency Bands, MHz	617-698	698-960	1427-1511	1690-2700	3300-4200	4400-6000	6000-7125	2400-2500	4900-6000	6000-7125	2400-2500	
Peak Gain, dBi*	3	5	4.5	8	8	9	7	7.5	8.5	9.5	6	
Total Efficiency (Average), %*	42											
VSWR (Max)**	< 1.8:1	< 1.7:1	< 1.8:1	< 1.6:1	< 1.4:1	< 1.6:1	< 1.7:1	< 1.4:1	< 1.5:1	< 1.5:1	< 1.5:1	
Isolation- Cellular-to-Cellular/BT Element	13	13	21	20	26	34	38	N/A			22	
Isolation- Wi-Fi-to-Wi-Fi Elements, dB**	N/A											
Max Gain ±30° above Horizon @ 5 GHz U-NII Bands, dBi*	5150-5250 MHz				6				7.5			
	5250-5350 MHz				7				8			
	5470-5725 MHz				7				7.5			
	5725-5850 MHz				7.5				7.5			
Max Power @ Ambient 20°C, Watts	10											
Connector Type	SMA-Male					RP SMA-MALE						
Polarization	Linear											
Nominal Impedance, Ω	50											
Weight, g (lbs)	3410 (7.52)											
Cables	1ft. RG174LL- pigtailed/Staggered; 16ft. RG58LL- extension cables											
Mounting Type	Fixed Stud M20											
Antenna Dimension Ht x Dia, mm (inches)	68 x 187 (2.7 x 7.4)											
Radome Color	Black											
Radome Material	PC, UL94-V0											
Baseplate Material	Aluminium											
Ingression Protection	IP67											
UV Rated	ASTM D4674											
Operating Temperature, °C (°F)	-40 to +85 (-40 to 185)											
Storage Temperature, °C (°F)	-40 to +85 (-40 to 185)											
Humidity Rating	MIL-STD-810G, 507.5, Procedure II, Aggravated Humidity @ 95%											
Flammability Rating	UL94 V0											
Mechanical Shock Rating	IEC 60068-2-27, Secured Cross Country Vehicles											
Vibration Test Rating	MIL-STD-810G, Method 514.6, Category 4, Highway Truck Vibration											
Material Substance Compliance	RoHS											
Wind Velocity (MPH)- Operational	100											
Wind Velocity (MPH)- Survival	136											

GNSS ANTENNA SPECIFICATIONS		
Frequency, MHz	1164-1189; 1559-1610	
Passive Antenna	1176.45 MHz	-0.4 Typ.
Peak Gain, dBi	1561 MHz	-0.6 Typ.
	1575.42 MHz	0.9 Typ.
	1602 MHz	-0.5 Typ.
LNA Gain, dBi	28 ± 3 Typ.	
Noise Figure, dB	3.0 Typ.	
Max VSWR	2.0:1	
Polarization	RHCP	
Nominal Impedance, Ω	50	
DC Voltage, Vdc	2~5	
Current @ DC 3V, mA	12.5 Typ.	
Input Max Power @ DC 3V, dBm	+10	
Out-of-band	350-520 MHz	> 65
Rejection, dBc	698-960 MHz	> 70
	1428-1511 MHz	> 40
	1710-2700 MHz	> 65
	4900-5800 MHz	> 75
Cable Type	RG174, Light Gray	
Connector	SMA-Male	

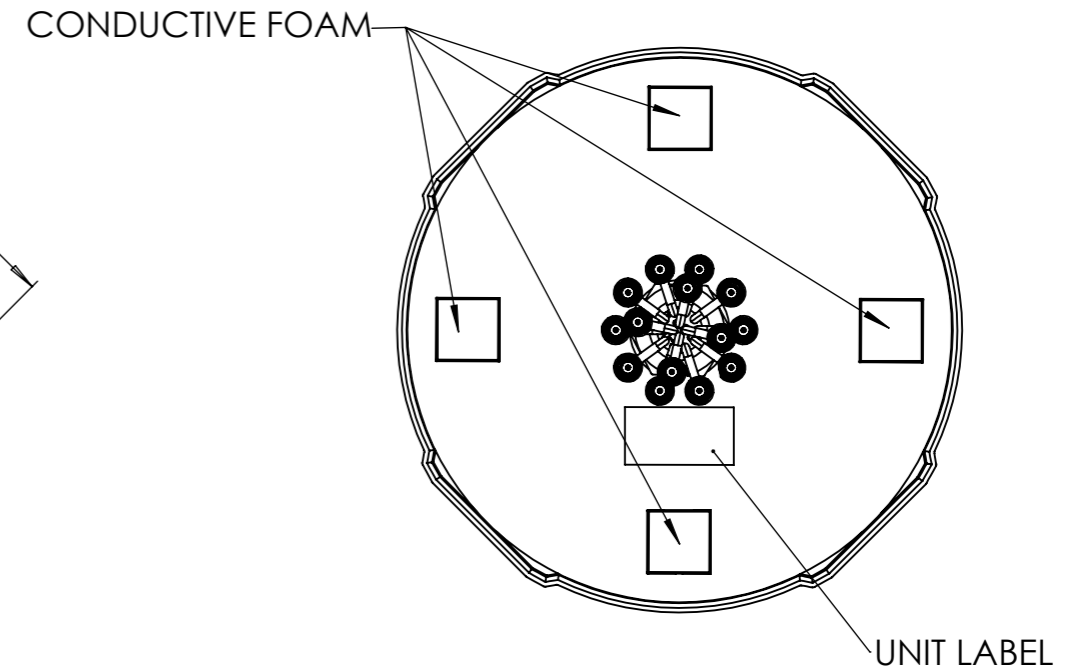
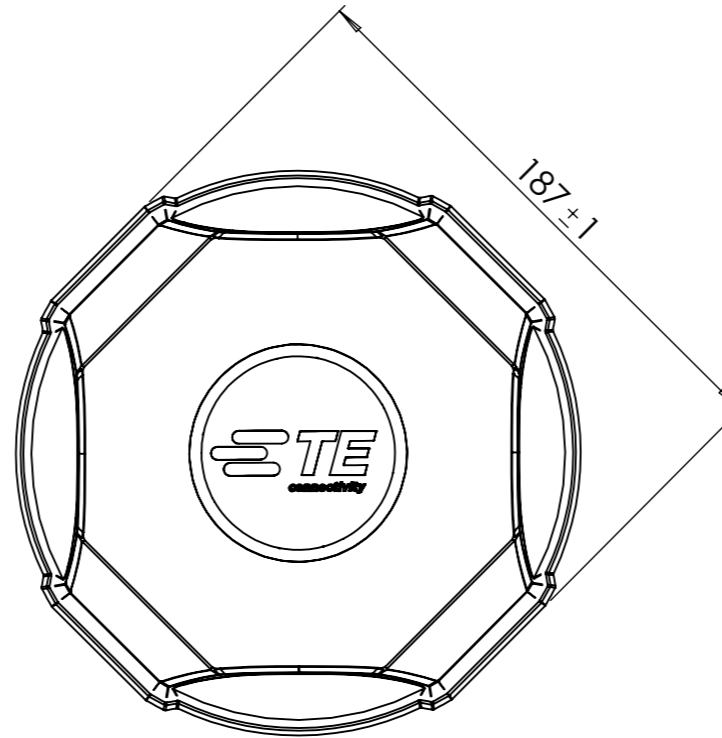
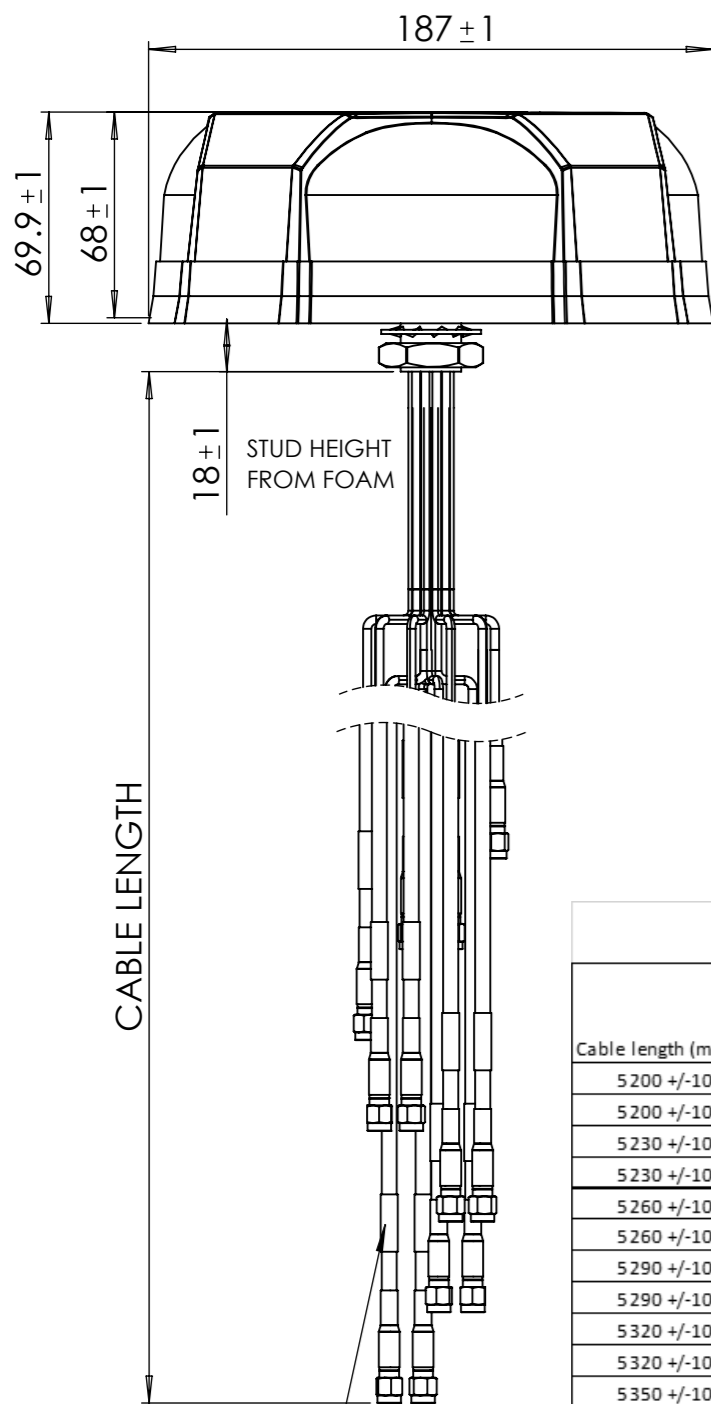


Antenna is measured on a 2ft x 2ft ground plane.
 *Measured with 1ft RG174LL coax cable.
 **Measured with 1ft RG174LL pigtail +16ft RG58LL extension cable.

CABLE LOSS											
RG58LL, OD 4.95±0.20mm (ECE R118 Compliant) (P/N: L000326-01)											
Frequency, MHz	698	960	1511	2500	2700	3300	4200	4400	4900	6000	7125
Cable Attenuation, dB/m	0.3	0.4	0.5	0.7	0.7	0.8	0.9	1	1.1	1.2	1.3

TCPN	No of PORT	RADOME COLOUR	ANTENNA WEIGHT, g (lbs)	PORTS CONFIGURATION			
				4G/5G	WLAN	BT	GNSS
L000434-01	9	BLACK	2380 (5.25)	4	4	NA	1
L000434-02	9	BLACK	2380 (5.25)	4	4	NA	1
L000434-03	9	WHITE	2380 (5.25)	4	4	NA	1
L000434-04	8	BLACK	2100(4.63)	4	2	1	1
L000434-05	8	BLACK	2100(4.63)	4	2	1	1
L000434-06	8	WHITE	2100(4.63)	4	2	1	1
L000434-07	4	BLACK	1250(2.76)	4	NA	NA	NA
L000434-08	14	BLACK	3410(7.52)	4	8	1	1

THIS DRAWING IS A CONTROLLED DOCUMENT.		DWN 20DEC2022			
DIMENSIONS: mm		TOLERANCES UNLESS OTHERWISE SPECIFIED:			
		0 PLC ± 0.5		TE TE Connectivity MULTI PORT VEHICLE ANT, 5G, Wi-Fi, BT, GNSS	
		1 PLC ± 0.25			
MATERIAL SEE BOM		FINISH		NAME	
				MULTI PORT VEHICLE ANT, 5G, Wi-Fi, BT, GNSS	
				PRODUCT SPEC	
				APPLICATION SPEC	
				SIZE	
				A3	
				CAGE CODE	
				00779	
				DRAWING NO	
				L000434	
				RESTRICTED TO	
				-	
				WEIGHT	
				649.38 g	
				SCALE	
				1:2	
				SHEET	
				4 OF 5	
				REV	
				A	
				CUSTOMER DRAWING	



Cable length (mm)	14 PORTS			9 PORTS			8 PORTS			4 PORTS		
	Label Description (Colour)	(L000434-08) Connector	Label Description (Colour)	(L000434-01) Connector	(L000434-02) Connector	(L000434-03) Connector	Label Description (Colour)	(L000434-04) Connector	(L000434-05) Connector	(L000434-06) Connector	Label Description (Colour)	(L000434-07) Connector
5200 +/-104	4G/5G A (YELLOW)	SMA MALE	4G/5G A (YELLOW)	SMA MALE	FAKRA-D	SMA MALE	4G/5G A (YELLOW)	SMA MALE	FAKRA-D	SMA MALE	4G/5G A (YELLOW)	SMA MALE
5200 +/-104	4G/5G B (YELLOW)	SMA MALE	4G/5G B (YELLOW)	SMA MALE	FAKRA-D	SMA MALE	4G/5G B (YELLOW)	SMA MALE	FAKRA-D	SMA MALE	4G/5G B (YELLOW)	SMA MALE
5230 +/-104	4G/5G C (YELLOW)	SMA MALE	4G/5G C (YELLOW)	SMA MALE	FAKRA-D	SMA MALE	4G/5G C (YELLOW)	SMA MALE	FAKRA-D	SMA MALE	4G/5G C (YELLOW)	SMA MALE
5230 +/-104	4G/5G D (YELLOW)	SMA MALE	4G/5G D (YELLOW)	SMA MALE	FAKRA-D	SMA MALE	4G/5G D (YELLOW)	SMA MALE	FAKRA-D	SMA MALE	4G/5G D (YELLOW)	SMA MALE
5260 +/-104	WLAN 1 (RED)	RP SMA MALE	WLAN 1 (RED)	RP SMA MALE	FAKRA-I	RP SMA MALE	WLAN 1 (RED)	RP SMA MALE	FAKRA-I	RP SMA MALE	NA	NA
5260 +/-104	WLAN 2 (RED)	RP SMA MALE	WLAN 2 (RED)	RP SMA MALE	FAKRA-I	RP SMA MALE	WLAN 2 (RED)	RP SMA MALE	FAKRA-I	RP SMA MALE	NA	NA
5290 +/-104	WLAN 3 (RED)	RP SMA MALE	WLAN 3 (RED)	RP SMA MALE	FAKRA-I	RP SMA MALE	BT (BLUE)	SMA MALE	FAKRA-Z	SMA MALE	NA	NA
5290 +/-104	WLAN 4 (RED)	RP SMA MALE	WLAN 4 (RED)	RP SMA MALE	FAKRA-I	RP SMA MALE	NA			NA	NA	NA
5320 +/-104	WLAN 5 (RED)	RP SMA MALE	NA	NA		NA	NA			NA	NA	NA
5320 +/-104	WLAN 6 (RED)	RP SMA MALE	NA	NA		NA	NA			NA	NA	NA
5350 +/-104	WLAN 7 (RED)	RP SMA MALE	NA	NA		NA	NA			NA	NA	NA
5350 +/-104	WLAN 8 (RED)	RP SMA MALE	NA	NA		NA	NA			NA	NA	NA
5380 +/-104	BT (BLUE)	SMA MALE	NA	NA		NA	NA			NA	NA	NA
5380 +/-104	GNSS (WHITE)	SMA MALE	GNSS (WHITE)	SMA MALE	FAKRA-C	SMA MALE	GNSS (WHITE)	SMA MALE	FAKRA-C	SMA MALE	NA	NA

INDICATOR CABLE (REFER TABLE)

THIS DRAWING IS A CONTROLLED DOCUMENT.

DWN LCTAN CHK 20DEC2022

APVD

PRODUCT SPEC

APPLICATION SPEC

WEIGHT 649.38 g

CUSTOMER DRAWING

DIMENSIONS: mm

TOLERANCES UNLESS OTHERWISE SPECIFIED:

0 PLC ± 0.5
1 PLC ± 0.25
2 PLC ± 0.13
3 PLC ±
4 PLC ±
ANGLES ± 30'

MATERIAL SEE BOM

FINISH

SCALE 1:2

SHEET 5 OF 5

REV A

TE Connectivity

NAME MULTI PORT VEHICLE ANT,5G, Wi-Fi,BT,GNSS

SIZE A3

CAGE CODE 00779

DRAWING NO L000434

RESTRICTED TO