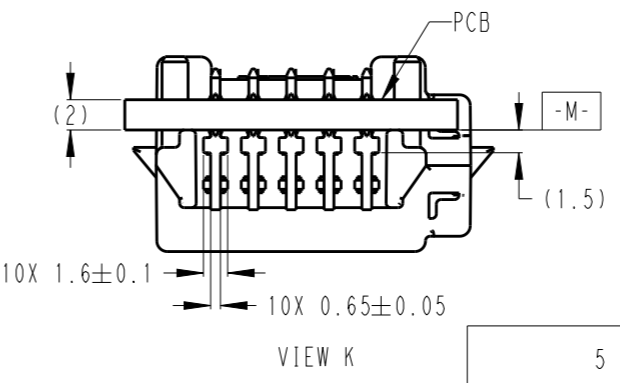
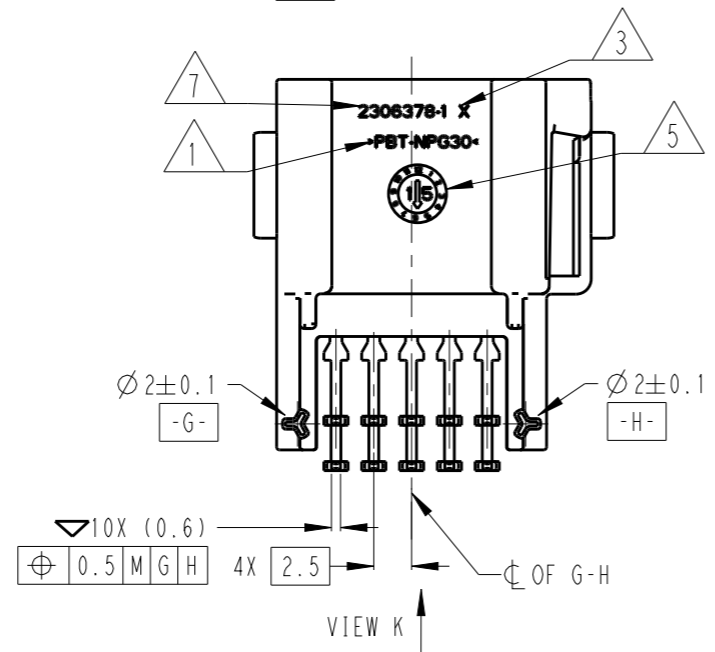
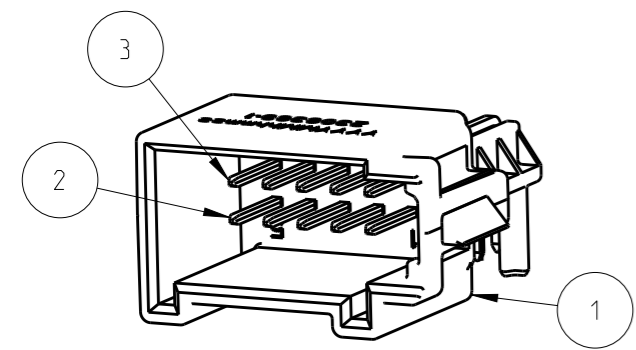
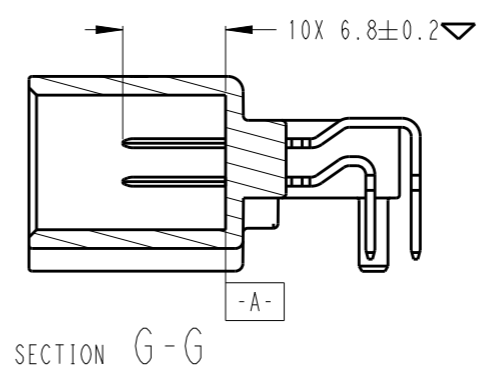
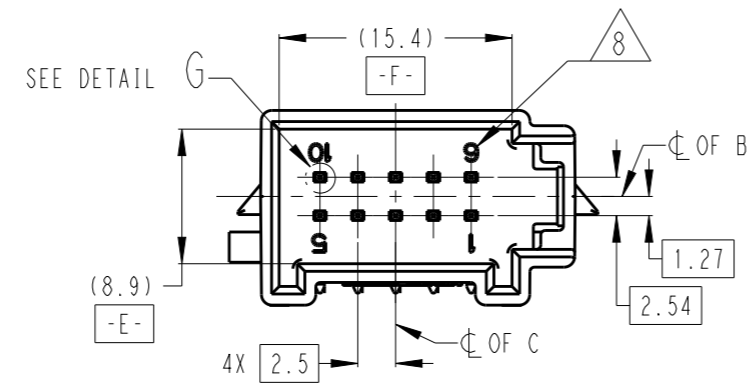
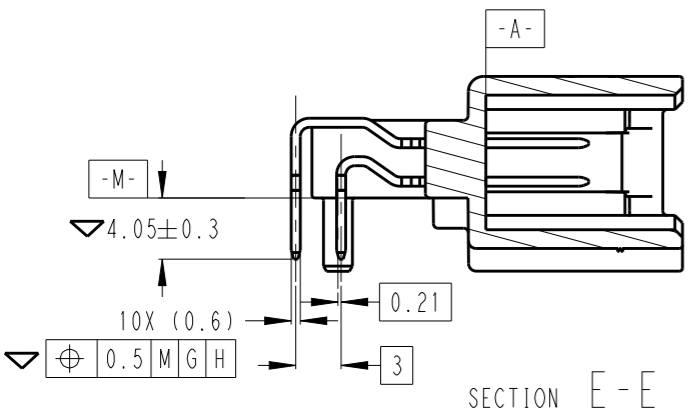
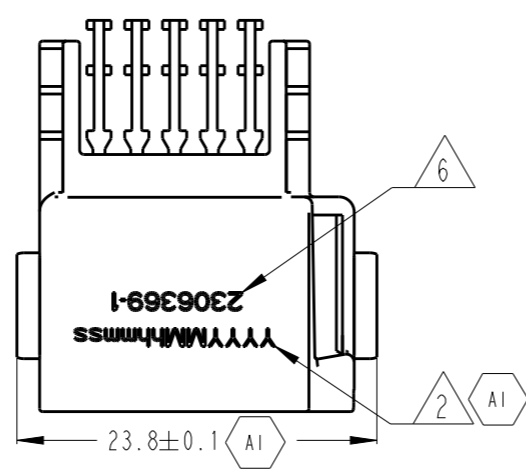
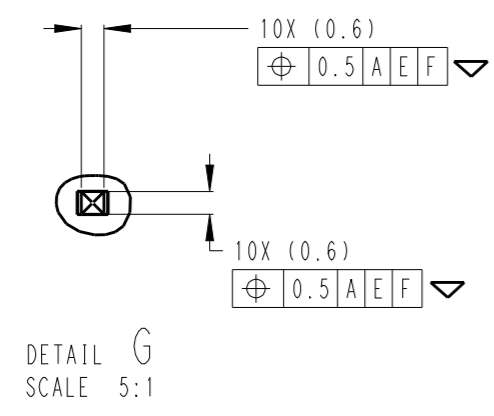


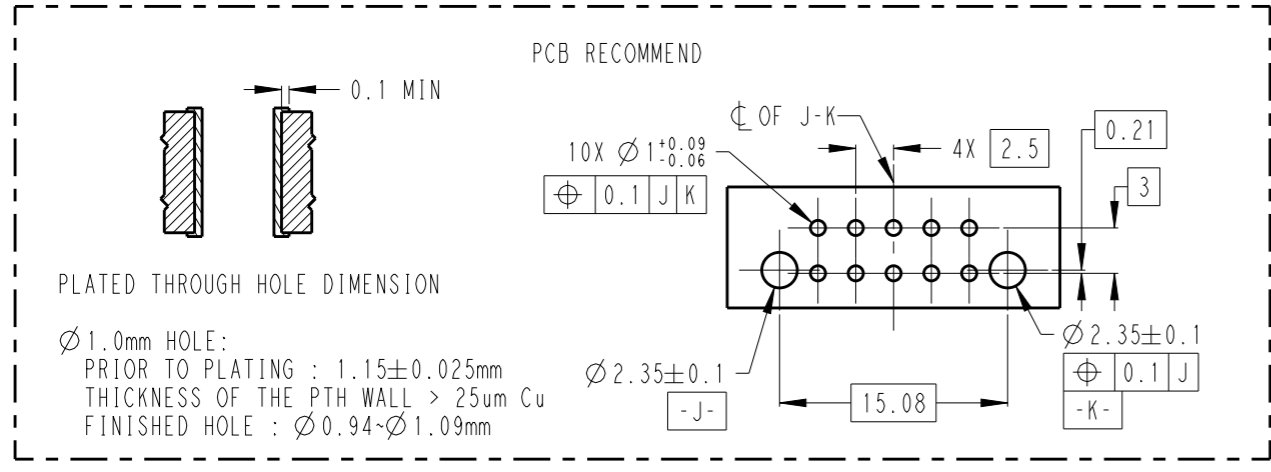
THIS DRAWING IS UNPUBLISHED. RELEASED FOR PUBLICATION 20
 © COPYRIGHT 20 BY - ALL RIGHTS RESERVED.

REVISIONS					
P	LTR	DESCRIPTION	DATE	DWN	APVD
	A	RELEASED	08JUL16	J.Y	I.Y
	A1	REVISED (ECR-17-012133)	30AUG17	J.Y	I.Y



- 1 MATERIAL : SEE TABLE.
- 2 MANUFACTURE DATE, LASER MARK.
- 3 MOLD TOOLING CAVITY NO.
- AI 4. SYMBOL ▽ IS MAJOR CHARACTERISTIC SAMPLING INSPECTION
- 5 MOLDDING DATE CODE DIA. 4.0mm
- 6 TE ASS'Y NO., LASER MARK.
- 7 TE HOUSING PART NO.
- 8 CAVITY IDENTIFICATION, SUNK 0.2mm
- AI 9. PART MEET VW91101, ROHS, GB/T 30512
- AI 10. PART MEET TL1001-V0
- AI 11. PLASTIC MEET
VICAT TEMPERATURE HEAT>120°C ACC. TO ISO 306
NOTCHED IMPACT STRENGTH>6 (DIN EN ISO 179-1/1eA)
TENSILE STRENGTH>90 (DIN EN ISO 527-1/2)
ELONGATION AT BREAK>2 (DIN EN ISO 527-1/2)
FLEXURAL STRENGTH>160 (DIN EN ISO 178)
- AI 12. PV TEST METHOD REFER TO LV214, DETAILED INFORMATION REFER TO TEST PLAN

QTY FOR ASS'Y PN	DESCRIPTION	MATERIAL	COLOR/FINISH	ITEM
5	0.63X0.63 SIGNAL PIN	CuSn4	1-3um Sn OVER 1.3-2.2um Ni	3
5	0.63X0.63 SIGNAL PIN	CuSn4	1-3um Sn OVER 1.3-2.2um Ni	2
1	HOUSING	PBT-NPG30	BLACK	1
2306369-1				



THIS DRAWING IS A CONTROLLED DOCUMENT.

DIMENSIONS: mm

TOLERANCES UNLESS OTHERWISE SPECIFIED:

0 PLC	±0.2
1 PLC	±0.1
2 PLC	±0.1
3 PLC	±
4 PLC	±
ANGLES	±
FINISH	-

MATERIAL 1

DWN J.YIN 08JUL2016
 CHK E.JIANG 08JUL2016
 APVD I.YIN 08JUL2016

PRODUCT SPEC -
 APPLICATION SPEC -
 WEIGHT -

CUSTOMER DRAWING

STE TE Connectivity

NAME 10 WAY RIGHT ANGLE PRESS FIT HEADER

SIZE A3	CAGE CODE 00779	DRAWING NO C-2306369	RESTRICTED TO -
---------	-----------------	----------------------	-----------------

SCALE 2:1 SHEET 1 OF 1 REV A1